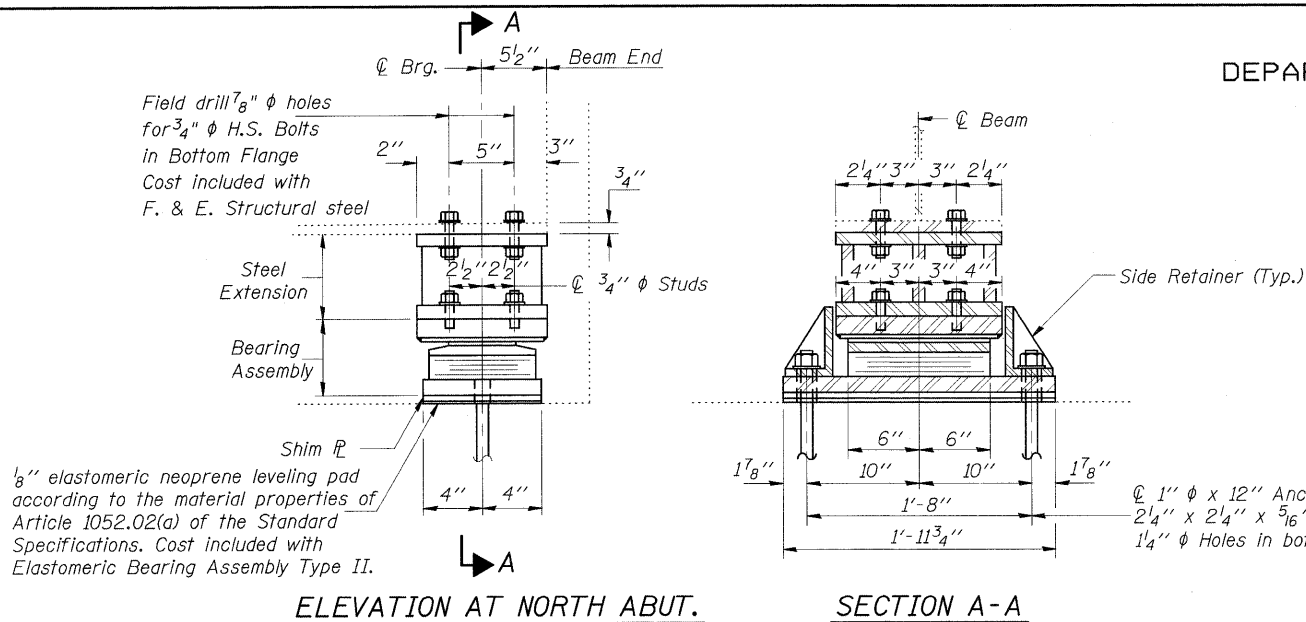
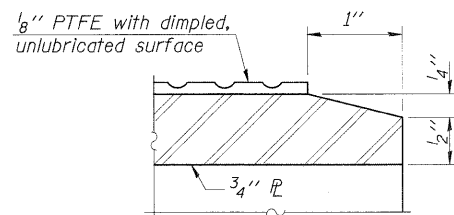
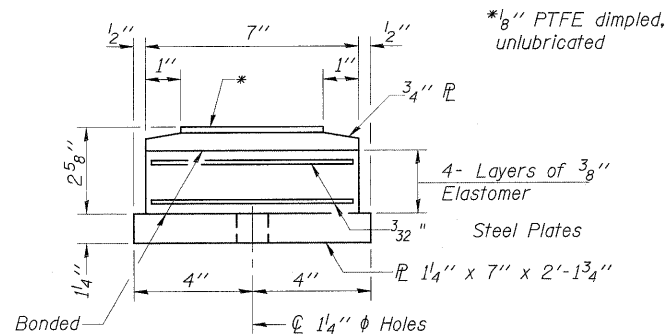
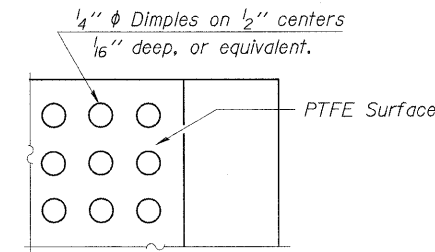
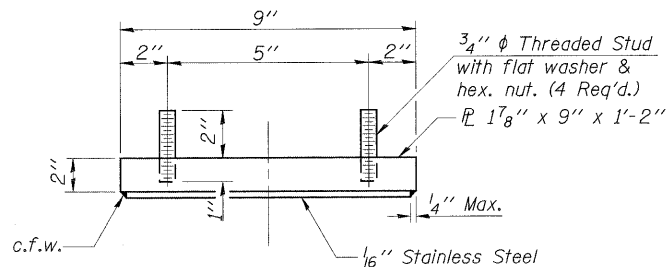


STATE OF ILLINOIS
DEPARTMENT OF TRANSPORTATION



TYPE II ELASTOMERIC EXP. BRG.



Existing Plate to be removed using the air-arc method and grind smooth all weld material remaining on the bottom flange.

Burn the existing anchor bolts flush with existing concrete surface. Grind existing anchor bolts smooth and seal with epoxy.

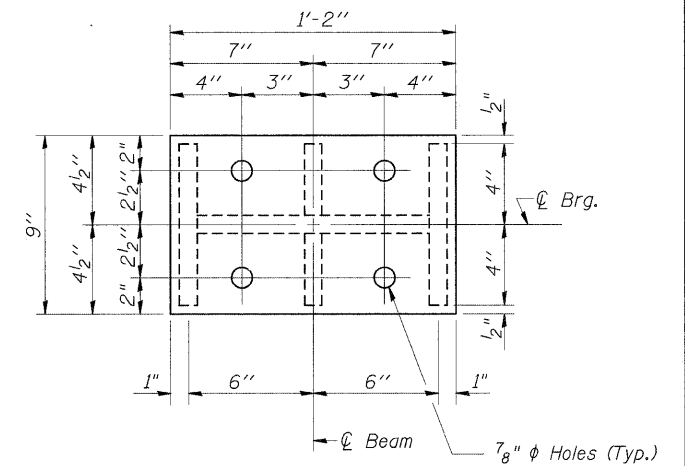
ABUTS

EXISTING BEARING REMOVAL DETAIL

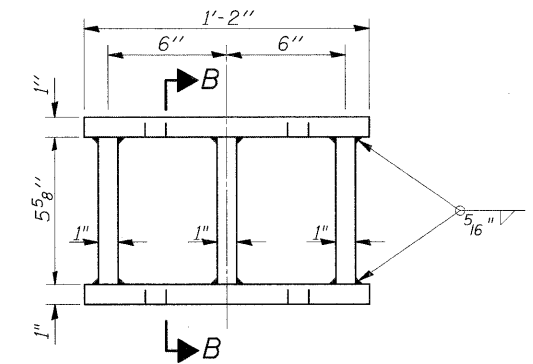
Cost is included with Jack and Remove Existing Bearings

GIRDER REACTIONS

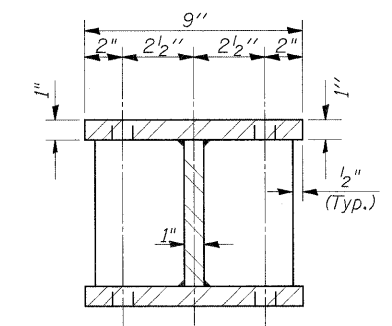
R _l	(K)	18.3
R _t	(K)	36.4
Imp.	(K)	10.8
R (Total)	(K)	65.5



PLAN-TOP & BOTTOM PLATE



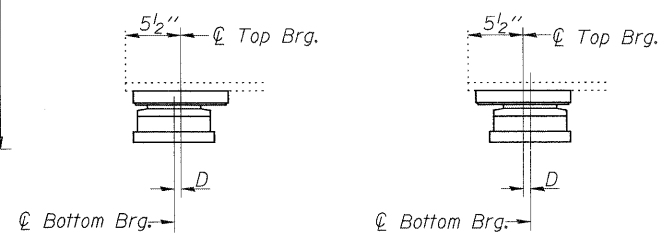
STEEL EXTENSION DETAIL



SECTION B-B

SIDE RETAINER

Equivalent rolled angle with stiffeners will be allowed in lieu of welded plates.



SETTING ANCHOR BOLTS AT EXP. BRG.

D = 1/8" per each 100' of expansion for every 15° temp. change from the normal temp. of 50°F.

BILL OF MATERIAL

Item	Unit	Total
Elastomeric Bearing Assembly Type II	Each	8
Anchor Bolts, 1"	Each	16
Jack and Remove Existing Bearings	Each	8
Furnishing and Erecting Structural Steel	Pound	1090

NORTH ABUTMENT BEARING DETAILS

STRUCTURE NO. 041-0012 (N.B.)