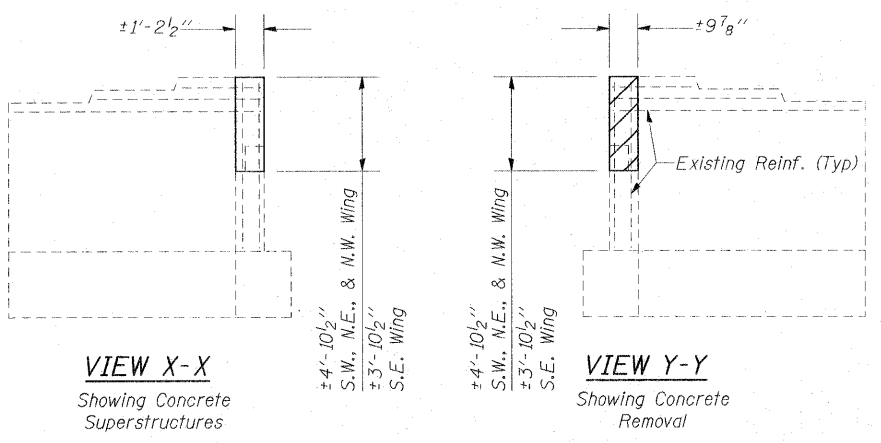
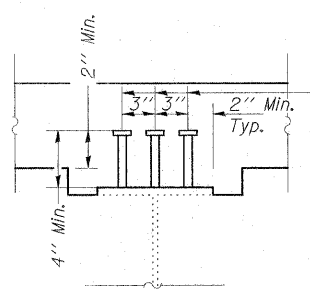


**SOUTH ABUT. PLAN  
SHOWING NEW CONCRETE**



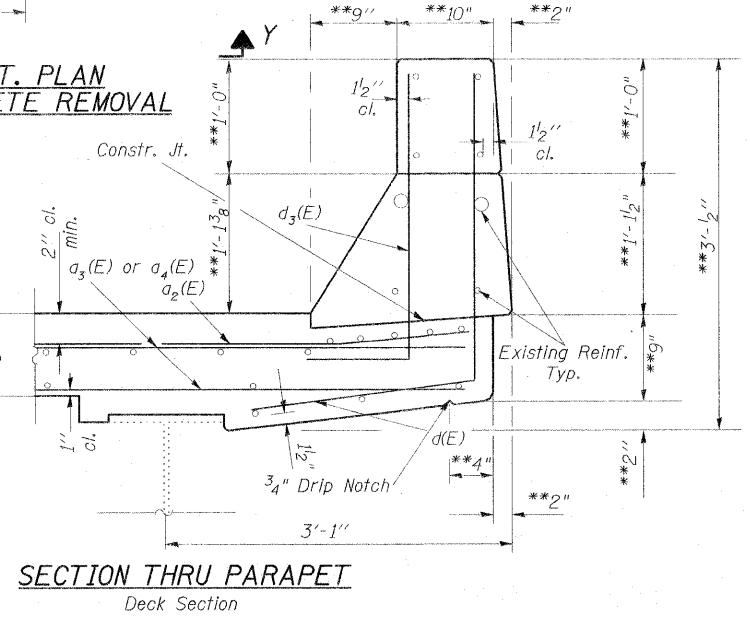
**NORTH ABUT. PLAN  
SHOWING CONCRETE REMOVAL**



**SECTION W-W**

Notes:  
\* Bend Bars in Field to fit.  
\*\* Verify in field (Match Existing)

Dimensions are based on a Rolled Rail Strip Seal Joint. If the Contractor elects to use the Welded Rail Strip Seal Joint, deck dimensions may require adjustments to satisfy the details on Base Sheet EJ-SSJ.



**BILL OF MATERIAL (BOTH ABUTS.)**

Bar No.	Size	Length	Shape
a2(E)	#6	4'-0"	—
a3(E)	#5	28'-7"	—
a4(E)	#5	29'-7"	—
d(E)	#4	4'-7"	┘
d3(E)	#5	3'-6"	┘
h2(E)	#5	28'-1"	—
h3(E)	#5	29'-1"	—
Concrete Superstructure	Cu. Yd.	15.9	
Stud Shear Connectors	Each	96	
Concrete Removal	Cu. Yd.	15.9	
Reinforcement Bars, Epoxy Coated	Pound	1600	

**ABUTMENTS.  
JOINT REPLACEMENT DETAILS  
JEFFERSON COUNTY  
SN 041-0012 (N.B.)**