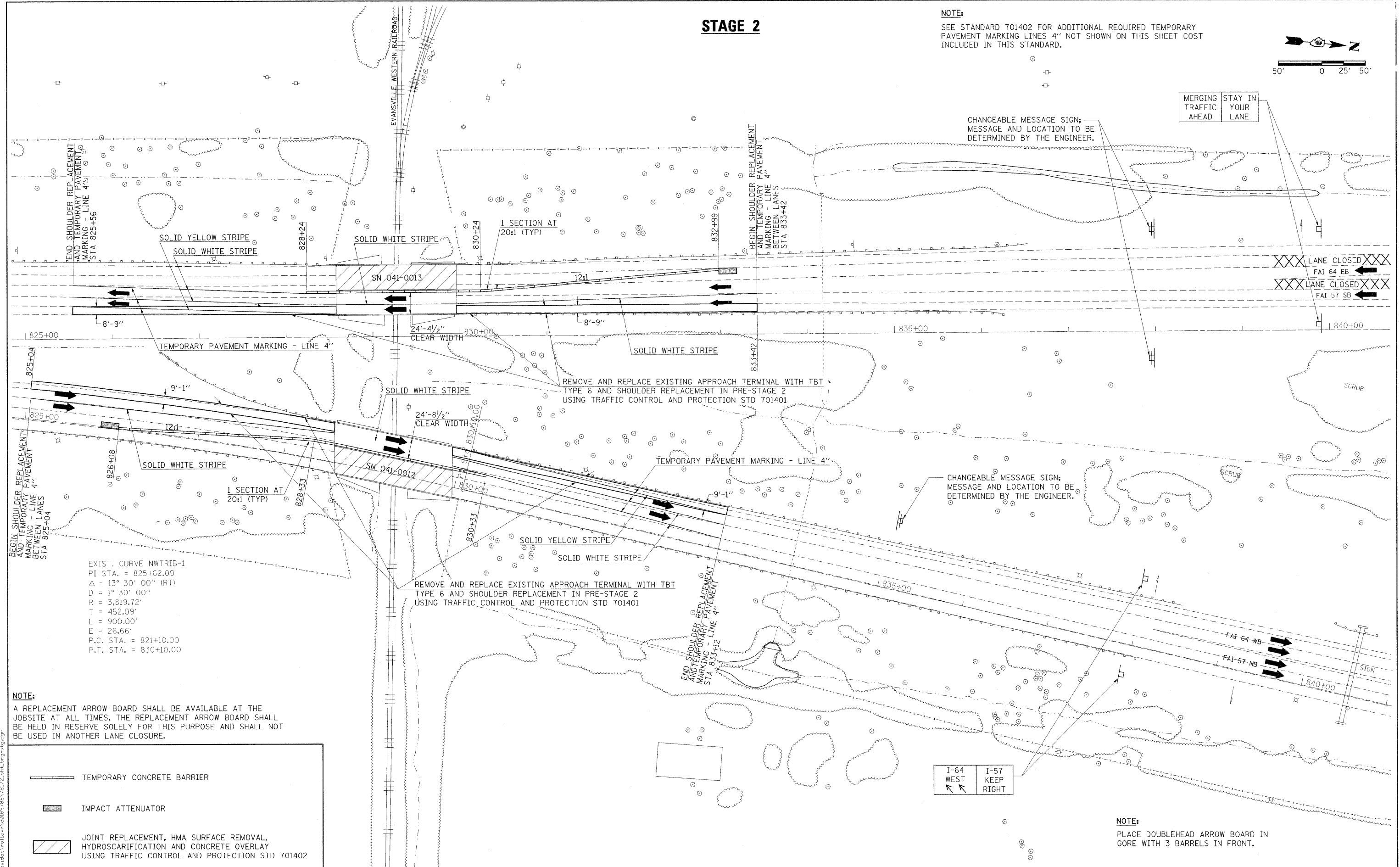
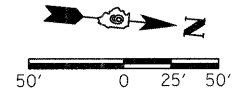


STAGE 2

NOTE:
SEE STANDARD 701402 FOR ADDITIONAL REQUIRED TEMPORARY PAVEMENT MARKING LINES 4" NOT SHOWN ON THIS SHEET COST INCLUDED IN THIS STANDARD.



MERGING TRAFFIC AHEAD
STAY IN YOUR LANE

CHANGEABLE MESSAGE SIGN; MESSAGE AND LOCATION TO BE DETERMINED BY THE ENGINEER.

LANE CLOSED
FAI 64 EB
LANE CLOSED
FAI 57 SB

CHANGEABLE MESSAGE SIGN; MESSAGE AND LOCATION TO BE DETERMINED BY THE ENGINEER.

FAI 64-WB
FAI 57-NB

I-64 WEST
I-57 KEEP RIGHT

NOTE:
PLACE DOUBLEHEAD ARROW BOARD IN GORE WITH 3 BARRELS IN FRONT.

EXIST. CURVE NWTRIB-1
PI STA. = 825+62.09
Δ = 13° 30' 00" (RT)
D = 1° 30' 00"
R = 3,819.72'
T = 452.09'
L = 900.00'
E = 26.66'
P.C. STA. = 821+10.00
P.T. STA. = 830+10.00

NOTE:
A REPLACEMENT ARROW BOARD SHALL BE AVAILABLE AT THE JOBSITE AT ALL TIMES. THE REPLACEMENT ARROW BOARD SHALL BE HELD IN RESERVE SOLELY FOR THIS PURPOSE AND SHALL NOT BE USED IN ANOTHER LANE CLOSURE.

- TEMPORARY CONCRETE BARRIER
- IMPACT ATTENUATOR
- JOINT REPLACEMENT, HMA SURFACE REMOVAL, HYDROSCARIFICATION AND CONCRETE OVERLAY USING TRAFFIC CONTROL AND PROTECTION STD 701402

USER NAME = follar	DESIGNED -	REVISED -
PLOT SCALE = 50,000' / IN.	DRAWN -	REVISED -
PLOT DATE = 2/23/2011	CHECKED -	REVISED -
	DATE -	REVISED -

**STATE OF ILLINOIS
DEPARTMENT OF TRANSPORTATION**

**BRIDGE STAGING PLAN
STAGE 2**

F.A.I. RTE.	SECTION	COUNTY	TOTAL SHEETS	SHEET NO.
57	(41-2-1,41-3,41-3-11R-1)	JEFFERSON	422	142
CONTRACT NO. 78172				
ILLINOIS FED. AID PROJECT				

SCALE: 1"=50' SHEET NO. OF SHEETS STA. TO STA.

FILE NAME = c:\pawork\pawork\collar\0109788\78172.dwg, brg114.dwg