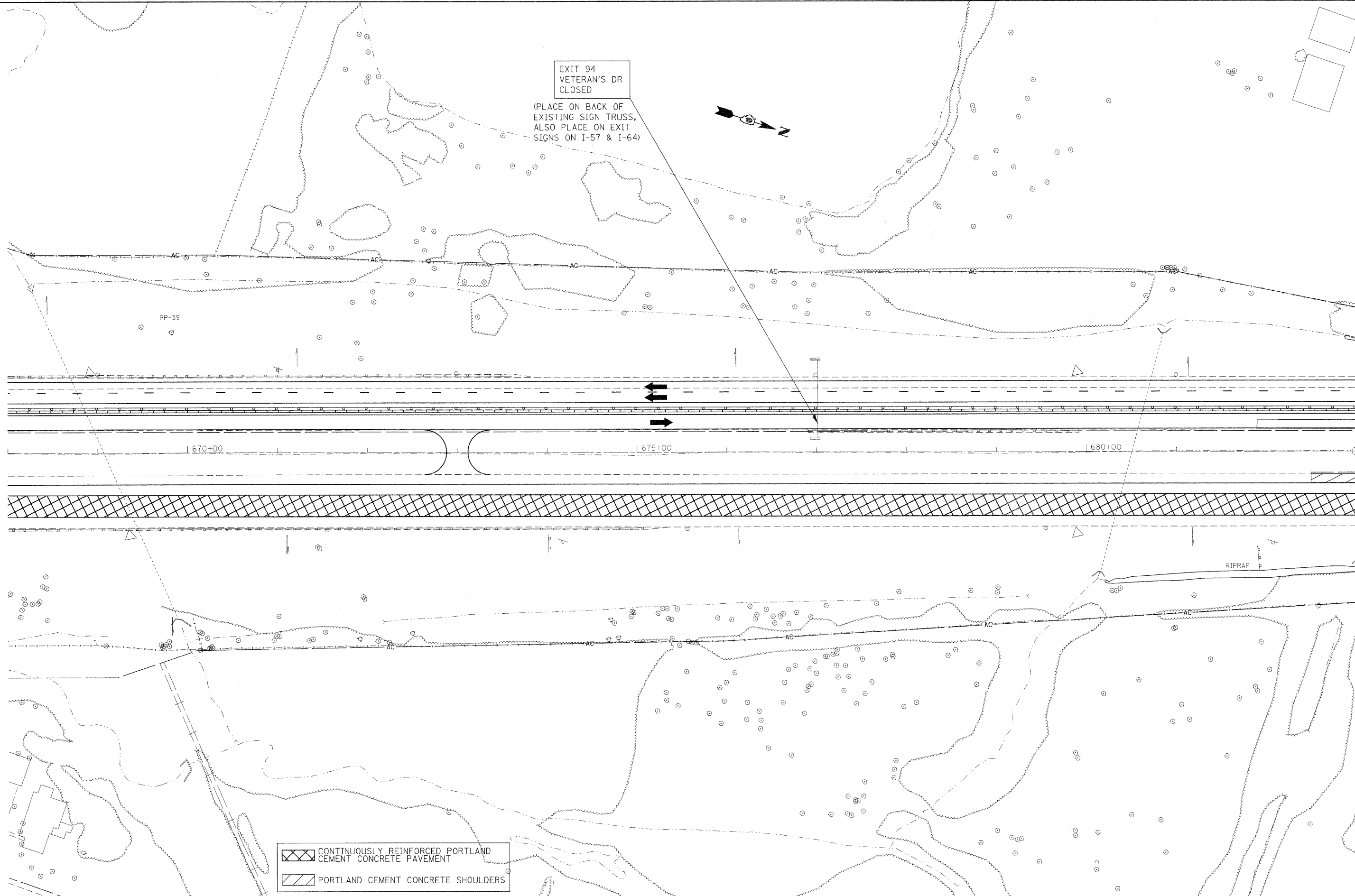
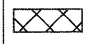
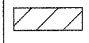


EXIT 94  
VETERAN'S DR  
CLOSED

(PLACE ON BACK OF  
EXISTING SIGN TRUSS,  
ALSO PLACE ON EXIT  
SIGNS ON I-57 & I-64)



 CONTINUOUSLY REINFORCED PORTLAND CEMENT CONCRETE PAVEMENT  
 PORTLAND CEMENT CONCRETE SHOULDERS

FILE NAME =	USER NAME = rollavr	DESIGNED -	REVISED -
ct\pwwork\pwwork\rollavr\d8169788\78172	sht-stg2.dgn	DRAWN -	REVISED -
	PLOT SCALE = 50,0000' / IN.	CHECKED -	REVISED -
	PLOT DATE = 2/22/2011	DATE -	REVISED -

**STATE OF ILLINOIS  
DEPARTMENT OF TRANSPORTATION**

**STAGING/MAINTENANCE OF TRAFFIC SHEETS  
STAGE 2**

SCALE: 50 SHEET NO. 5 OF 18 SHEETS STA. TO STA.

F.A.I. RTE.	SECTION	COUNTY	TOTAL SHEETS	SHEET NO.
57	*	Jefferson	422	48
			CONTRACT NO. 78172	
ILLINOIS FED. AID PROJECT				