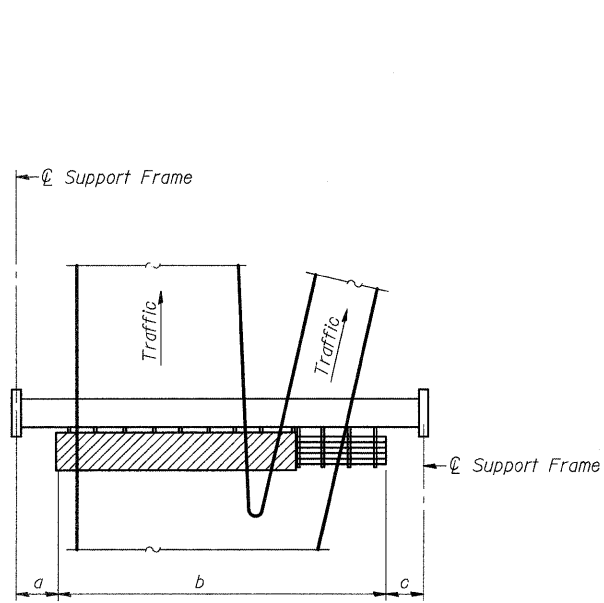


STATE OF ILLINOIS  
DEPARTMENT OF TRANSPORTATION

ROUTE NO.	SECTION	COUNTY	TOTAL SHEETS	SHEET NO.	SHEET NO.
S.B.L. F.A.	* * *	*	34	29	---
FED. ROAD DIST. NO. 7	ILLINOIS	FED. AID PROJECT			

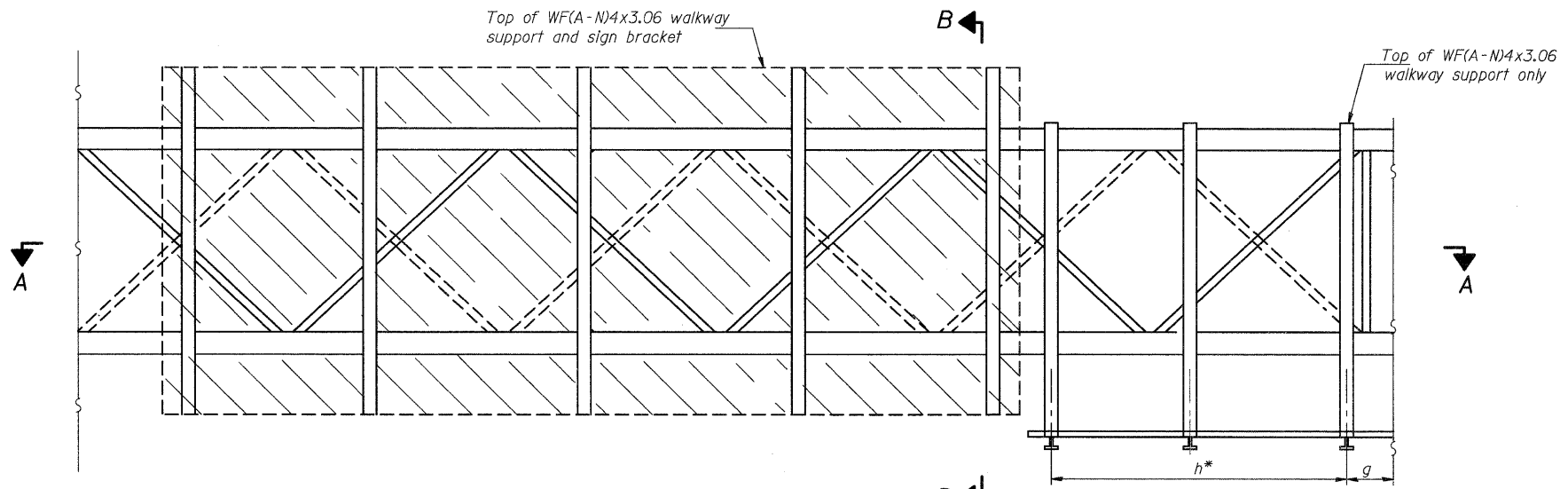


**PLAN**  
**WALKWAY AND HANDRAIL SKETCH**  
(Road plan beneath truss varies)

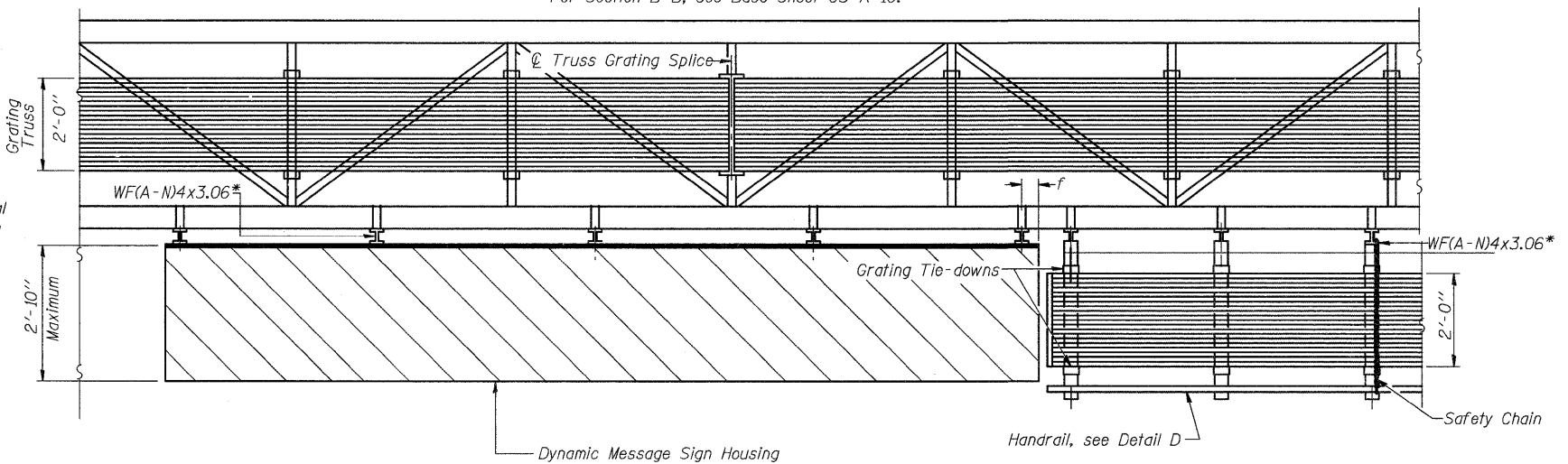
**BRACKET TABLE**

Sign Width		Number Brackets Required
Greater Than	Less Than or Equal To	
	10'-0"	2
10'-0"	16'-0"	3
16'-0"	22'-0"	4
22'-0"	28'-0"	5
28'-0"	34'-0"	6

Walkway and Truss Grating width dimensions are nominal and may vary  $\pm 1/2$ " based on available standard widths.



**TYPICAL FRONT ELEVATION**  
With handrail omitted for clarity.  
For Section B-B, see Base Sheet OS-A-10.



**SECTION A-A**

Handrail and walkway shall span a minimum of three brackets between splices and/or gap joints. Place all sign and walkway brackets as close to panel points as practical. Grating and handrail splices placed as needed.

Truss grating to facilitate inspection shall run full length (center to center of support frames)  $\pm 12$ " on overhead trusses. Cost of truss grating is included in "Overhead Sign Structure".

Notes: \*Space walkway brackets WF(A-N)4x3.06 and sign brackets WF(A-N)4x3.06 for efficiency and within limits shown:

- f = 12" maximum, 4" minimum (End of sign to  $\phi$  of nearest bracket)
- g = 12" maximum, 4" minimum (End of nearest grating to  $\phi$  of nearest support bracket)
- h = 6'-0" maximum ( $\phi$  to  $\phi$  sign and/or walkway support brackets, WF(A-N)4x1.79 or WF(A-N)4x3.06)

\*\*If walkway bracket at safety chain location is behind sign, add angle to bracket, see Alternate Safety Chain Attachment on Base Sheet OS-A-11.

For Details T and W, Section B-B and Grating Splice Details, see Base Sheet OS-A-10.  
For Details D, F, G and P and Handrail Splice Details, see Base Sheet OS-A-11.

Structure Number	Station	a	b	c	Walkway Grating and Handrail Lengths
8S0821064L010.8	466+75	22'-8"	38'-8"	29'-8"	8'
8S0601055L012.3	579+50	10'-8"	36'-8"	23'-8"	6'
8S0601270L008.4	528+00	18'-8"	48'-8"	28'-8"	18'

DESIGNED	19
CHECKED	EXAMINED
DRAWN	PASSED
CHECKED	

NUMBER	REVISION	DATE

FOR INFORMATION, ONLY