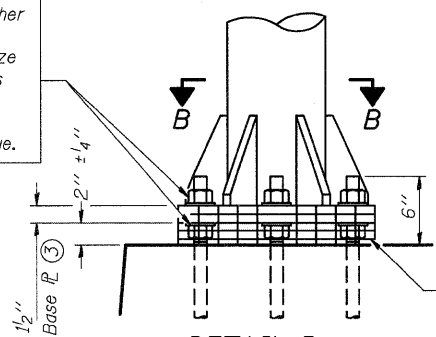


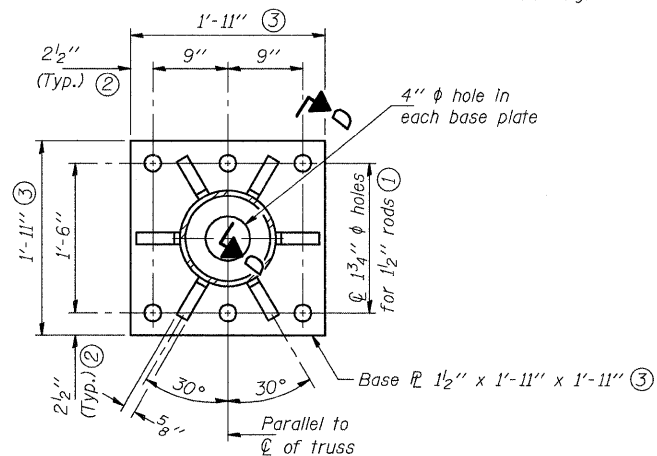
STATE OF ILLINOIS
DEPARTMENT OF TRANSPORTATION

ROUTE NO.	SECTION	COUNTY	TOTAL SHEETS	SHEET NO.
F.A.I.	*	*	34	28
F.A.	*	*		
FED. ROAD DIST. NO. 7	ILLINOIS	FED. AID PROJECT		

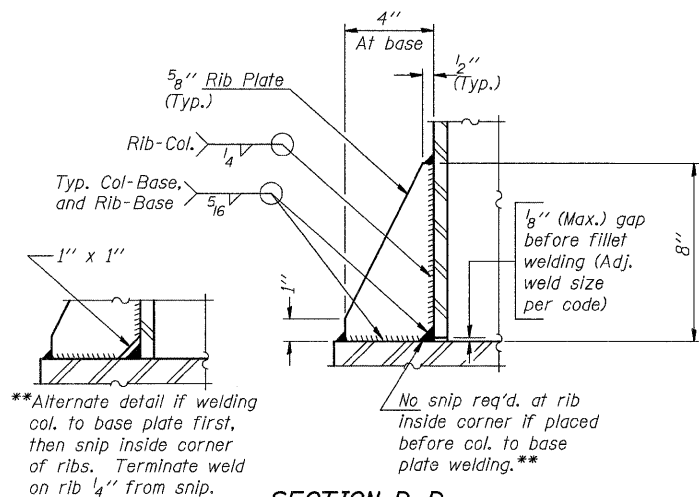
Hexagon locknut and washer (top), leveling nut and washer (bottom). Galvanize per AASHTO M232. Nuts shall each be tightened against base plate with 200 lb.-ft. minimum torque.



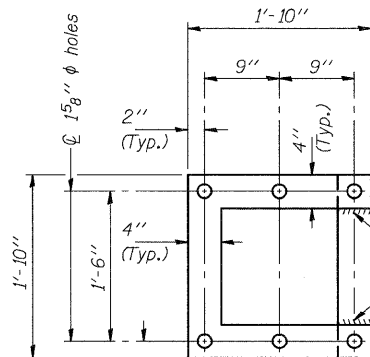
DETAIL B
Ribs shall be cut to fit slope of pipe.
Stainless Steel Standard Grade Wire Cloth, 3" wide, 1/4" maximum opening with a minimum wire diameter of AWG. No. 16 with a minimum 2" lap. Secure to base plate after erection with 3/4" stainless steel banding.



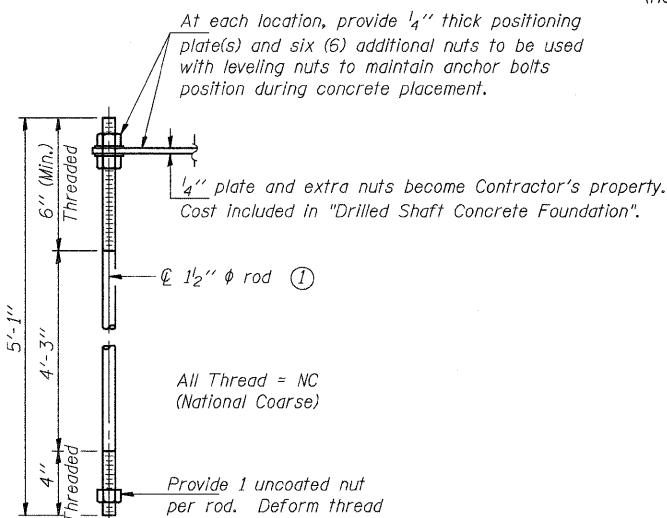
SECTION B-B



SECTION D-D



POSITIONING PLATE(S)



ANCHOR ROD DETAIL

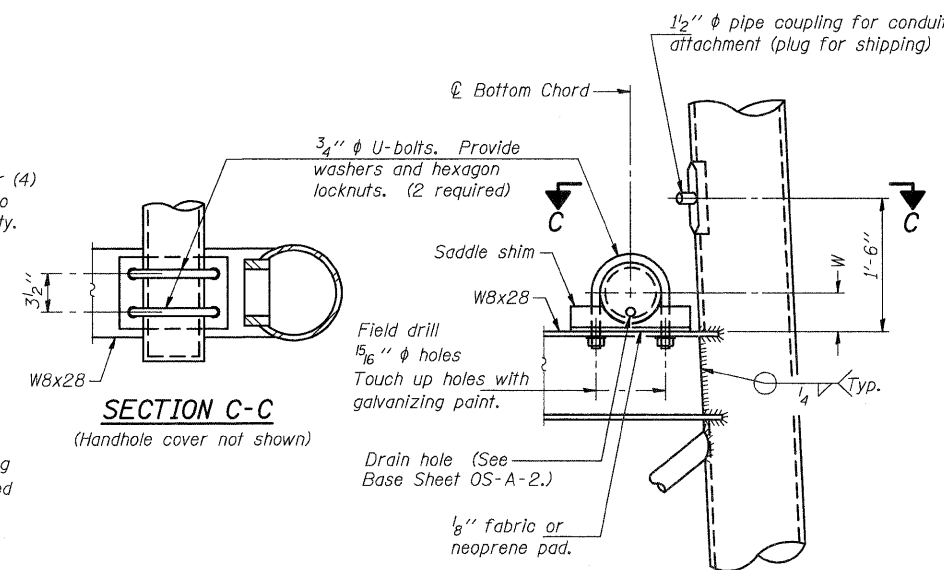
Anchor rods shall conform to AASHTO M314 Grade 36 or 55 and meet Charpy V-Notch (CVN) energy of 15 lb.-ft. at 40° F. Galvanize upper 12" per AASHTO M232. No welding shall be permitted on rods.

TYPE III-A TRUSS

12" φ PIPE SUPPORT FRAME DETAILS

Notes: For Type III-A Truss spans greater than 150 ft, and up to 160 ft.:

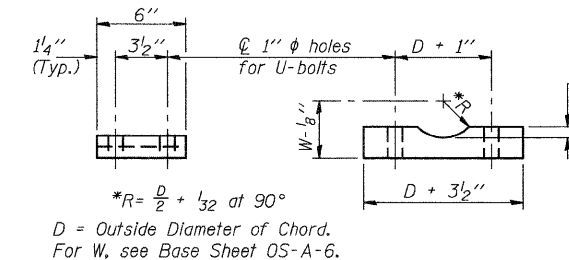
- ① 1 3/4" φ rod, 2" φ holes
- ② 2 3/4" edge distance
- ③ Base Pl. 1 5/8" x 1'-11 1/2" x 1'-11 1/2"



SECTION C-C

(Handhole cover not shown)

DETAIL C



SADDLE SHIM DETAIL

ASTM B26 Alloy 356-F
or
ASTM B209 Alloy 6061-T651
(4 required per sign truss)

Truss Chord Nominal Dia.	a
7"	1"
8 1/2"	1 1/4"
9"	1 3/8"

DESIGNED	200
CHECKED	EXAMINED
DRAWN	PASSED
CHECKED	

ENGINEER OF STRUCTURAL SERVICES
ENGINEER OF BRIDGES AND STRUCTURES

NUMBER	REVISION	DATE

OS4-A-8aA 7/1/2001

FILE NAME =	USER NAME = prestonme	DESIGNED -	REVISD -
c:\pwwork\pwwork\prestonme\d0239212\d876e70-shr-ITS.dgn		DRAWN -	REVISD -
PLOT SCALE = 100.0000 / IN.		CHECKED -	REVISD -
PLOT DATE = 1/28/2011		DATE -	REVISD -

STATE OF ILLINOIS
DEPARTMENT OF TRANSPORTATION

EX. OVERHEAD SIGN STRUCTURES
SUPPORT FRAME for TYPE III-A ALUMINUM TRUSS 2 OF 2

SCALE: _____ SHEET NO. ___ OF ___ SHEETS STA. _____ TO STA. _____

F.A.I. RTE.	SECTION	COUNTY	TOTAL SHEETS	SHEET NO.
64	DIST. 8 ITS 2011-3	ST. CLAIR	10	8
FED. ROAD DIST. NO. ILLINOIS FED. AID PROJECT			CONTRACT NO. 76E70	

FOR INFORMATION, ONLY