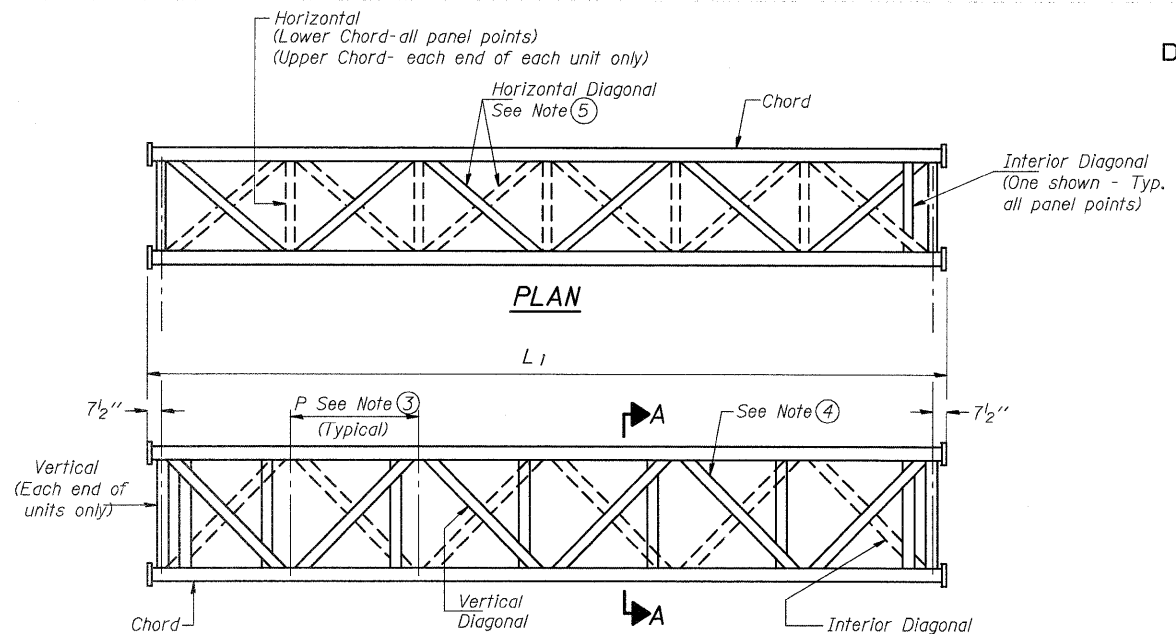
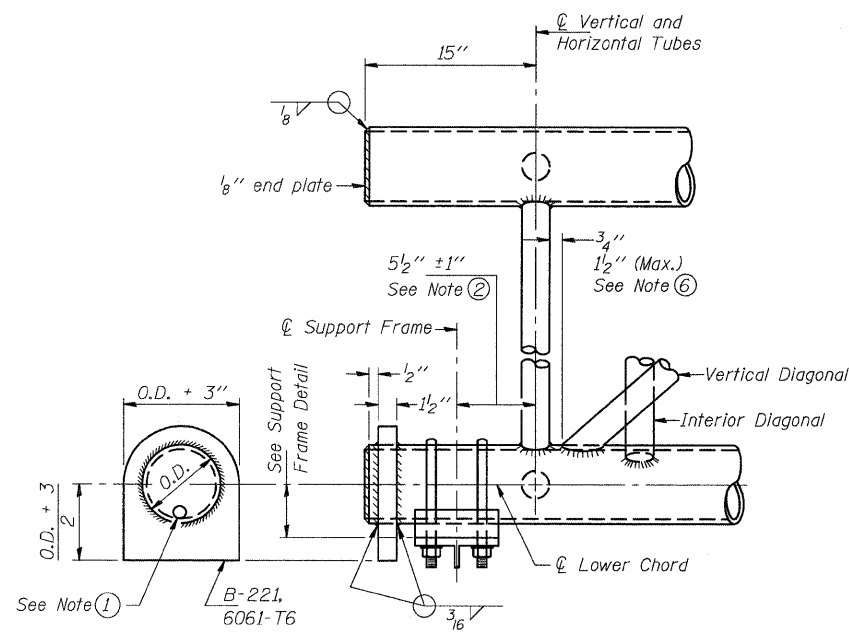


STATE OF ILLINOIS
DEPARTMENT OF TRANSPORTATION

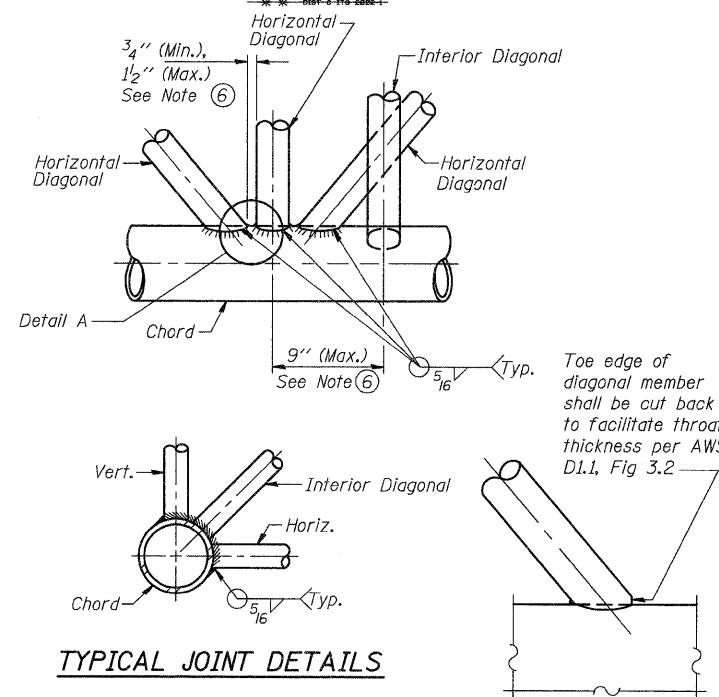
ROUTE NO.	SECTION	COUNTY	TOTAL SHEETS	SHEET NO.
S. R. I.	*	*	34	25
F. A.	*	*		
FED. ROAD DIST. NO. 7	ILLINOIS	FED. AID PROJECT		



**ELEVATION
TYPICAL INTERIOR UNIT**
Even number of panels/interior unit required.



SUPPORT END DETAIL FOR EXTERIOR UNIT

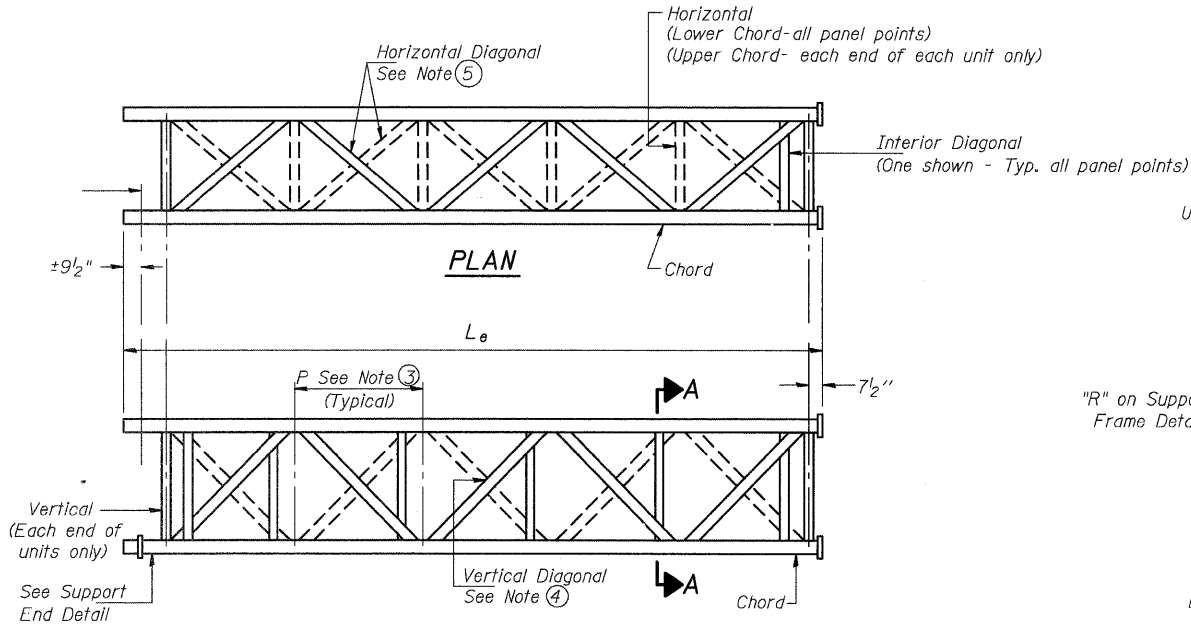


TYPICAL JOINT DETAILS

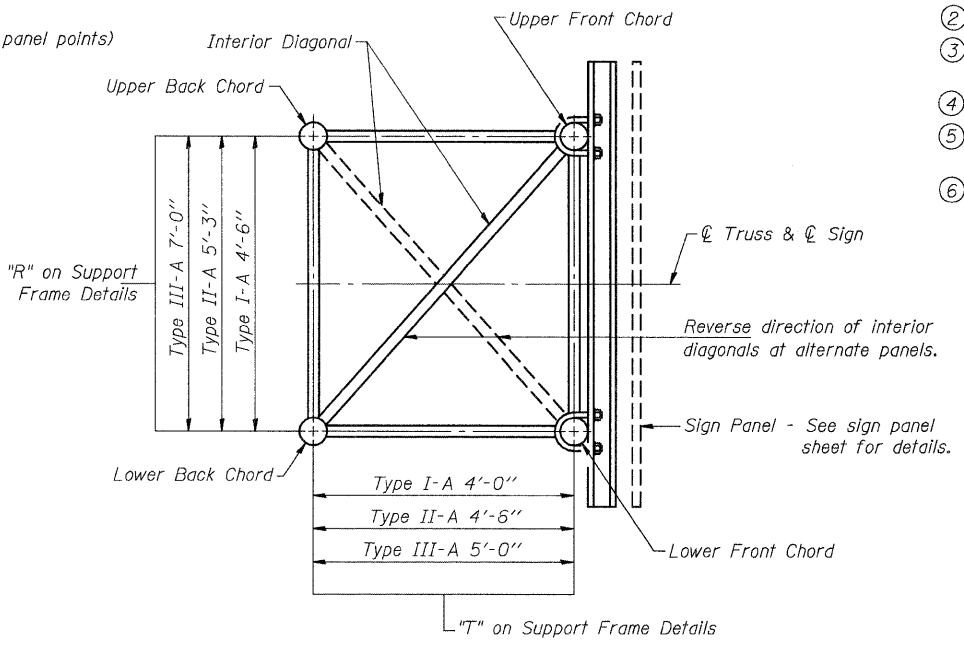
DETAIL A

NOTES

- Contractor may alternatively use standard aluminum drive-fit cap to close end. 1/2" diameter drain hole in end plate/drive-fit cap. (Typ. at ends of all chords)
- 5 1/2" end dimension may vary by +/- 1" to provide uniform panel spacing (P).
- Panel spacing (P) shall be uniform for entire truss and between 4'-0" and 5'-0" for Type I-A or 4'-0" and 5'-6" for Types II-A and III-A.
- Vertical Diagonals in front and back face shall alternate.
- Hidden lines show wind bracing alternates direction between planes of top and bottom chords.
- All diagonals shall be detailed for minimum offset from the panel point based on the following: Offset shall be such as to provide a 3/4" minimum to 1 1/2" maximum clearance between any diagonal and any horizontal or vertical member, and to provide clearance for U-bolt connections of signs or walkway brackets.



**ELEVATION
TYPICAL EXTERIOR UNIT**
Even or odd number of panels/exterior units allowed.



SECTION A-A
(Vertical and horizontal diagonals not shown)

DESIGNED	
CHECKED	
DRAWN	
CHECKED	

EXAMINED	208
PASSED	

NUMBER	REVISION	DATE

OS-A-2 7/1/2001

FILE NAME =	USER NAME = prestonme	DESIGNED -	REVISD -
ca:\pwwork\pwwid\prestonme\d0239212\08766707-shr-ITS.dgn		DRAWN -	REVISD -
		CHECKED -	REVISD -
		DATE -	REVISD -

STATE OF ILLINOIS
DEPARTMENT OF TRANSPORTATION

EX. OVERHEAD SIGN STRUCTURES: ALUMINUM TRUSS DETAILS
FOR TRUSS TYPES I-A, II-A AND III-A 1 OF 2

SCALE: _____ SHEET NO. ____ OF ____ SHEETS STA. _____ TO STA. _____

F.A.I. RTE.	SECTION	COUNTY	TOTAL SHEETS	SHEET NO.
64	DIST. 8 ITS 2011-3	ST. CLAIR	10	5
FED. ROAD DIST. NO.	ILLINOIS	FED. AID PROJECT	CONTRACT NO. 76E70	

FOR INFORMATION, ONLY