

F.A.I. RTE.	SECTION	COUNTY	TOTAL SHEETS	SHEET NO.
64	DIST. 8 ITS 2011-3	ST. CLAIR	10	3
		ILLINOIS	CONTRACT NO. 76E70	

STATE OF ILLINOIS
DEPARTMENT OF TRANSPORTATION
DIVISION OF HIGHWAYS

PROPOSED
HIGHWAY PLANS

FAI ROUTE 64 (I-64)
SECTION DIST 8 ITS 2011-3

LED DMS REPLACEMENT @
WB I-64 MP10.8 (STA. 466 + 75)
ST. CLAIR COUNTY

C-98-031-11

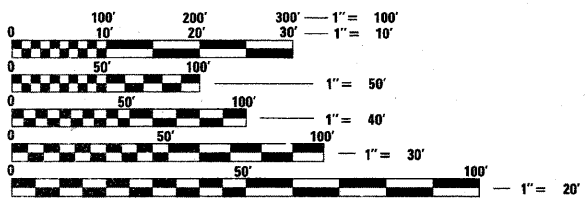
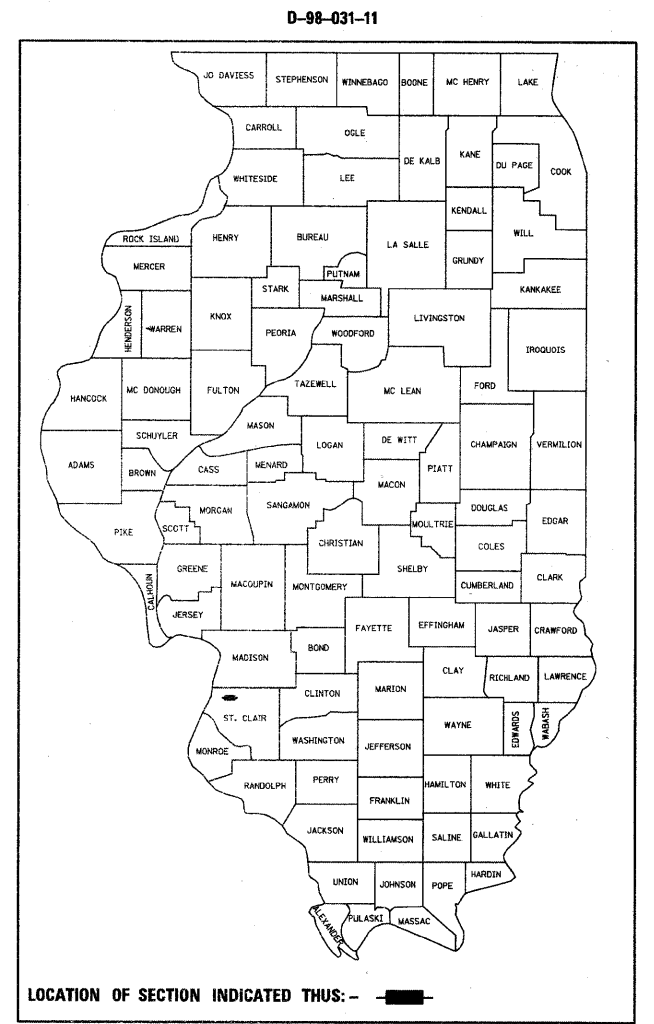
INDEX OF SHEETS

1. COVER SHEET
2. SUMMARY OF QUANTITIES, GENERAL NOTES, TRAFFIC VOLUME & LEGEND
3. LED DMS REPLACEMENT PLAN, TRUSS CONDUIT AND CONTROLLER DIAGRAMS
4. EX. OVERHEAD SIGN STRUCTURES GENERAL PLAN & ELEVATION-ALUMINUM TRUSS & STEEL SUPPORTS DETAILS
- 5 & 6. EX. OVERHEAD SIGN STRUCTURES ALUMINUM TRUSS DETAILS FOR TRUSS TYPES I-A, II-A AND III-A
- 7 & 8. EX. OVERHEAD SIGN STRUCTURES SUPPORT FRAME FOR TYPE III-A ALUMINUM TRUSS
- 9 & 10. EX. OVERHEAD SIGN STRUCTURES ALUMINUM HANDRAILS DETAILS

SHEETS 4 - 10 ARE FOR INFORMATION , ONLY.

STANDARDS

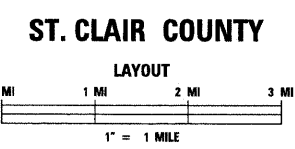
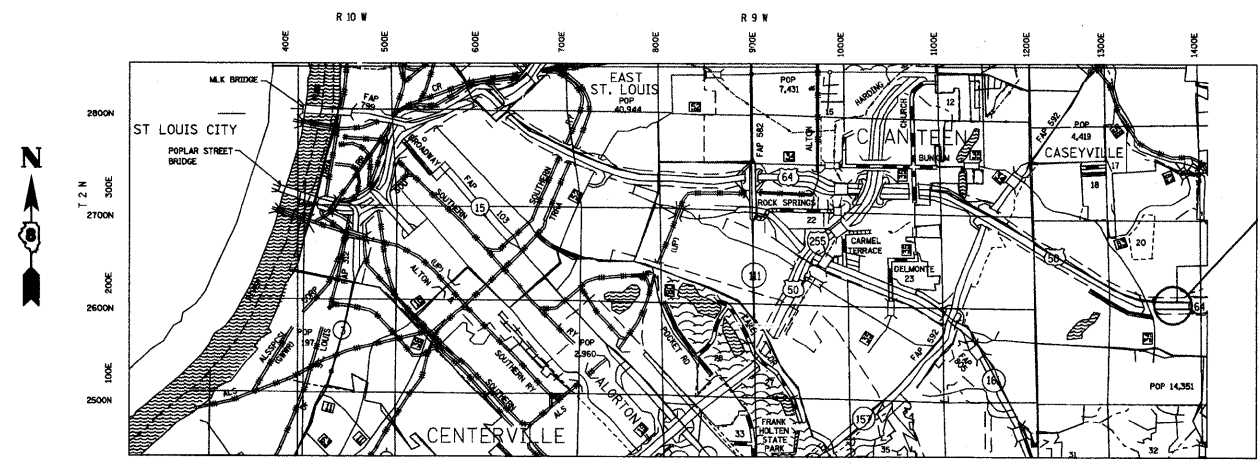
- | | | |
|-----------|-----------|-----------|
| 000001-06 | 701001-02 | 701006-03 |
| 701101-02 | 701106-02 | 701400-05 |
| 701406-06 | 701446-02 | 701901-01 |



FULL SIZE PLANS HAVE BEEN PREPARED USING STANDARD ENGINEERING SCALES. REDUCED SIZED PLANS WILL NOT CONFORM TO STANDARD SCALES. IN MAKING MEASUREMENTS ON REDUCED PLANS, THE ABOVE SCALES MAY BE USED.

J.U.L.I.E.
 JOINT UTILITY LOCATION INFORMATION FOR EXCAVATION
 1-800-892-0123
 OR 811

PROJECT ENGINEER: PATTI LeBEAU (618) 346-3179
SQUAD LEADER: MICHAEL PRESTON (618) 346-3143
LIAISON ENGINEER: LINDA LEONARD (618) 346-3285
CONTRACT NO. 76E70



DMS REPLACEMENT
(006410.8W.01S)
@WB I-64 MP10.8
(STA. 466 + 75)
BETWEEN
IL 159 & IL 157
CASEVILLE TWSHP.

STATE OF ILLINOIS
 DEPARTMENT OF TRANSPORTATION
 DIVISION OF HIGHWAYS

SUBMITTED January 31 20 11

Mary C. Jamie
 DEPUTY DIRECTOR OF HIGHWAYS, REGION 5 ENGINEER

March 05 20 11

Scott E. Stitt P.E. Ia
 Acting ENGINEER OF DESIGN AND ENVIRONMENT

March 05 20 11

Christine M. Reed
 DIRECTOR OF HIGHWAYS, CHIEF ENGINEER

PRINTED BY THE AUTHORITY
OF THE STATE OF ILLINOIS