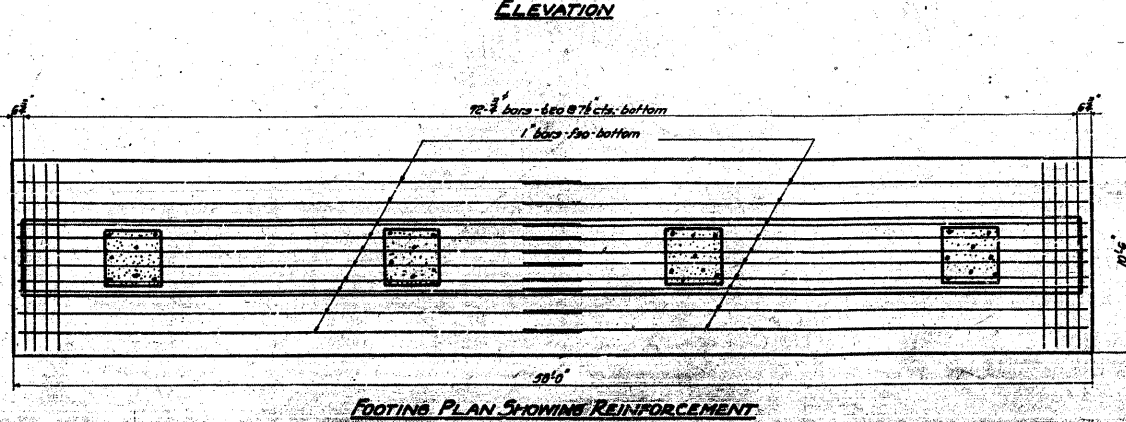
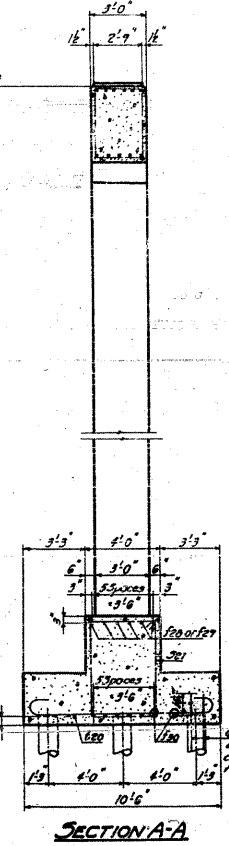
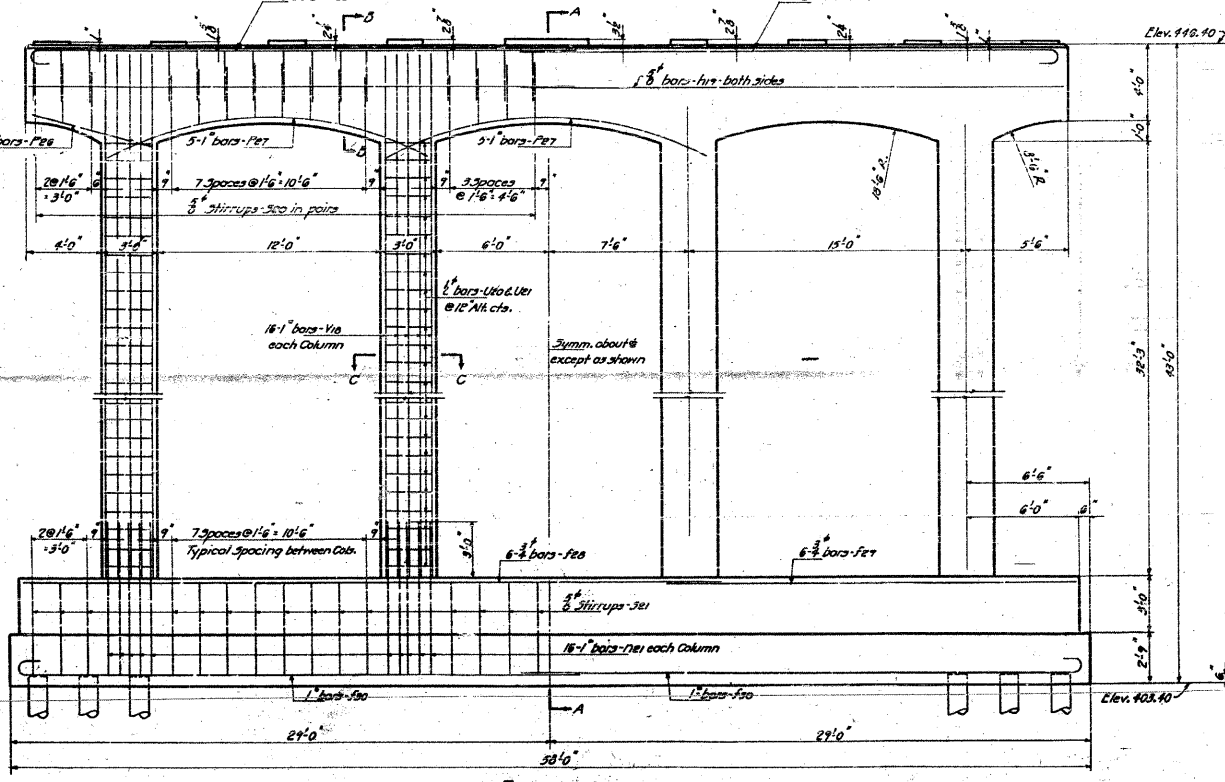
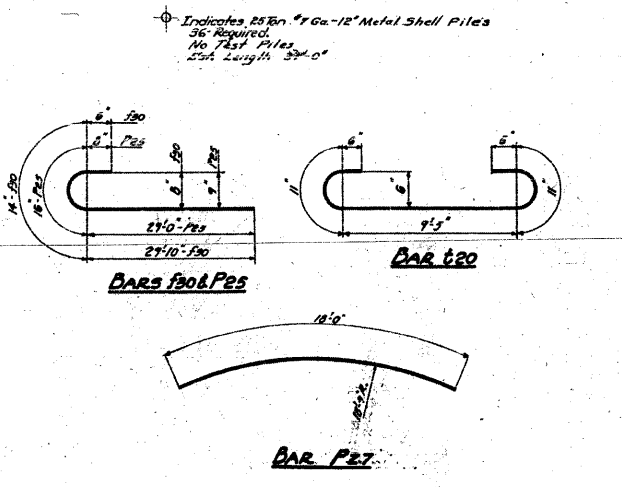
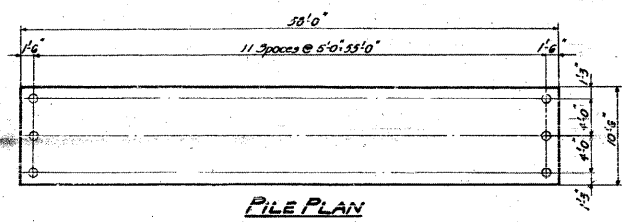
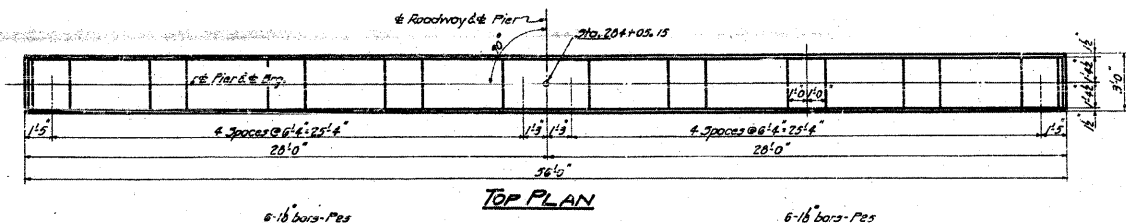
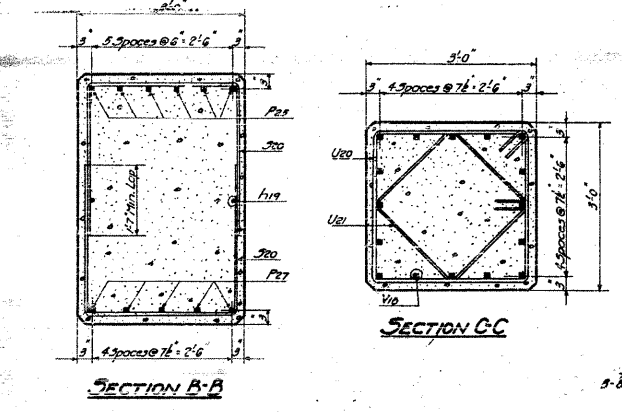


STATE OF ILLINOIS  
DEPARTMENT OF PUBLIC WORKS & BUILDINGS  
DIVISION OF HIGHWAYS

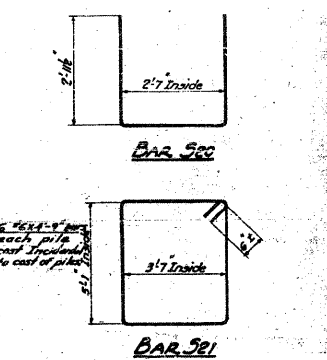
BOOK SHEET	SECTION	COUNTY	TOTAL SHEETS	SHEET NO.	SHEET NO.
4	64-1VB	St. Clair	36	35	30 SHEETS
ILLINOIS FED. AID PROJECT					



**BILL OF MATERIAL**

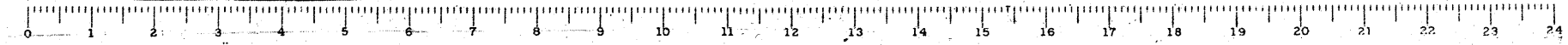
BAR	NUMBER	SIZE	LENGTH
F30	6	3"	37'0"
P25	6	3"	22'0"
F30	20	1"	31'6"
F19	4	3"	20'6"
P21	64	1"	0'3"
P25	12	1 1/2"	31'0"
P26	6	3"	6'6"
P27	15	1"	10'0"
F30	60	3"	8'6"
F21	30	3"	18'6"
t20	22	3"	10'3"
U20	60	2"	11'6"
U21	64	2"	8'6"
V10	64	1"	36'9"

Class-X Concrete Cu. Yds. 157.7  
Reinforcement Bars Lbs. 18070  
1/2" Metal Shell Piles Lin. Ft. 1224  
Class A Etc. for Str. Cu. Yds. 230



STANDARD	COMPUTED W. J. W. 10/54	EXAMINED B-10 10/54
	CHECKED W. E. Hansen	DESIGNED W. E. Hansen
	DRAWN W. J. W. M. Miller	PASSED
	CHECKED J. K. [Signature]	APPROVED
SPECIAL	ASSEMBLED	
	CHECKED	

**FIG. 8**  
GRADE SEPARATION  
MISSOURI PACIFIC R. R.  
NORTH OF DUFO  
E.A. ROUTE 1 - Jct. 661VA  
ST. CLAIR COUNTY



**CB** Coombe-Bloxdorf P.C.  
- CIVIL ENGINEERS -  
- STRUCTURAL ENGINEERS -  
- LAND SURVEYORS -  
Design Firm License No. 184-002703