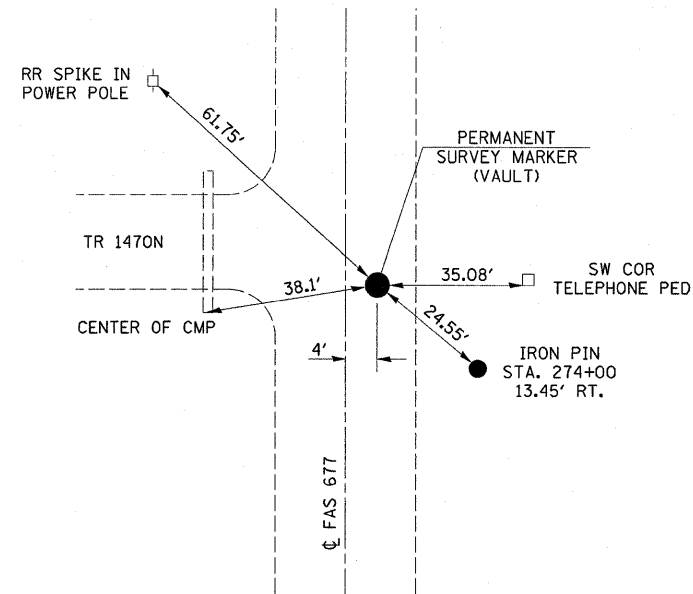
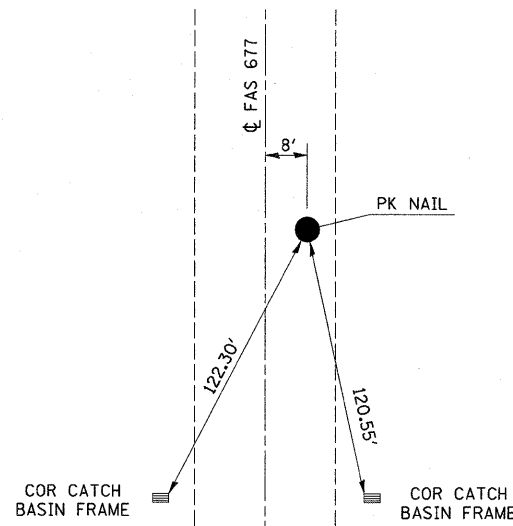


NE COR 12-13N-10E  
PERMANENT SURVEY  
MARKER (VAULT)  
STA. 274+21.20, 4.0' RT.



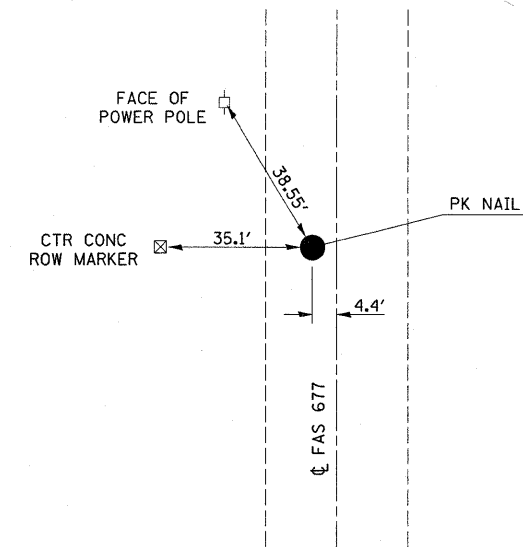
NOTE: NOT DRAWN TO SCALE

SE COR NE 1/4 SECT 36-14-10  
PK NAIL  
STA. 353+46, 8.0' RT.



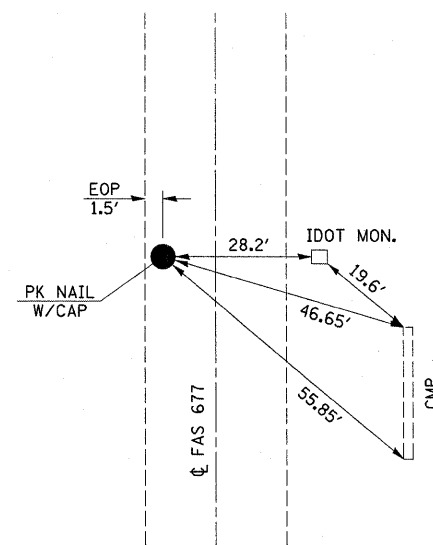
NOTE: NOT DRAWN TO SCALE

NE COR SECT 36-14-10  
PK NAIL  
STA. 379+75, 4.4' LT.



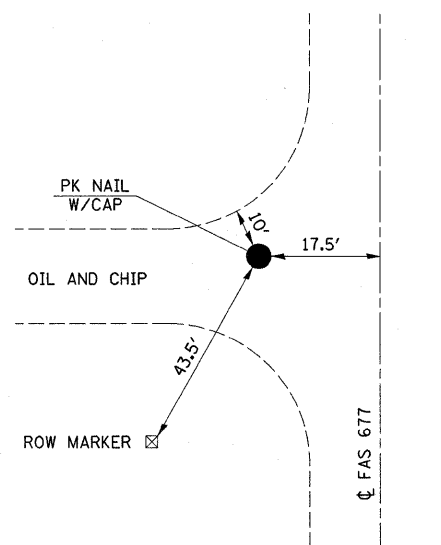
NOTE: NOT DRAWN TO SCALE

NW COR SECT 31-14-11  
PK NAIL  
STA. 390+20, 10.5' LT.



NOTE: NOT DRAWN TO SCALE

E 1/4 COR SECT 25-14-10  
PK NAIL W/CAP  
STA. 406+28, 17.5' LT.



NOTE: NOT DRAWN TO SCALE

SURVEY MARKER SCHEDULE	SURVEY MARKER VAULT	SURVEY MONUMENT COVER ASSEMBLY
LOCATION	EACH	EACH
89+45, 3.0' RT	1.0	
168+20, 0.5' RT		1.0
194+62, 2.2' LT		1.0
221+19.4, 0.6' RT		1.0
231+15, 2.5' RT	1.0	
247+68.8, 5.6' RT		1.0
274+21.2, 4.0' RT		1.0
353+46, 8.0' RT	1.0	
379+75, 4.4' LT	1.0	
390+20, 10.5' LT	1.0	
406+28, 17.5' LT	1.0	
TOTAL	6.0	5.0

FILE NAME =	USER NAME = swartzrw	DESIGNED -	REVISED -
ct:\pw_work\pwidot\swartzrw\d0242172\d77	507-shr-details.dgn	DRAWN -	REVISED -
	PLOT SCALE = 20.0000' / IN.	CHECKED -	REVISED -
	PLOT DATE = 1/31/2011	DATE -	REVISED -

STATE OF ILLINOIS  
DEPARTMENT OF TRANSPORTATION

TIE POINTS

SCALE: NA SHEET NO. 2 OF 2 SHEETS STA. TO STA.

F.A.S. RTE.	SECTION	COUNTY	TOTAL SHEETS	SHEET NO.
677	(15-2,15-1,15,11)RS-1	COLES	63	19
FED. ROAD DIST. NO.			ILLINOIS FED. AID PROJECT	
			CONTRACT NO. 74507	