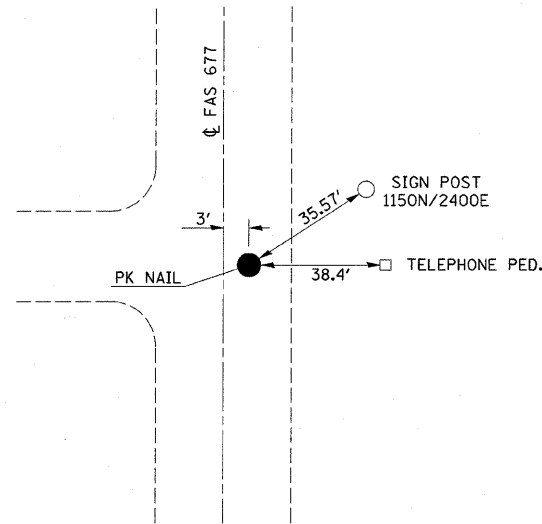
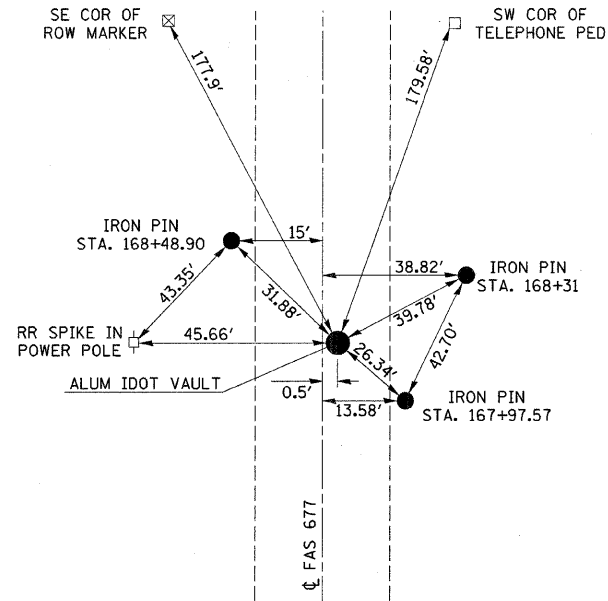


NE COR SE 1/4 SECT 25-13-10
PK NAIL
STA. 89+45, 3.0' RT.



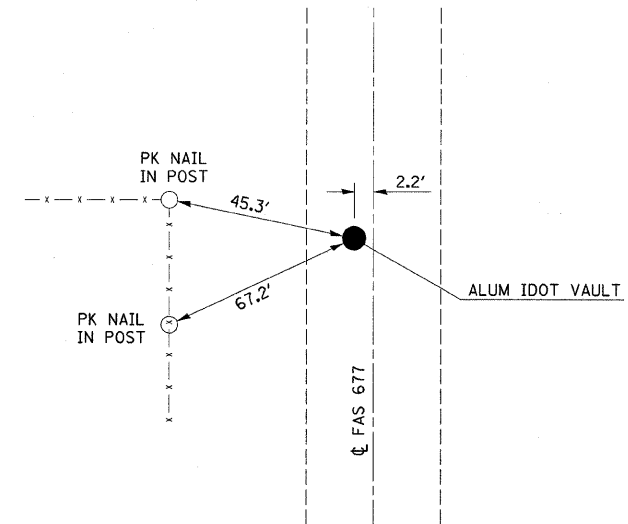
NOTE: NOT DRAWN TO SCALE

NE COR 24-13N-10E
ALUM IDOT VAULT
STA. 168+20, 0.5' RT.



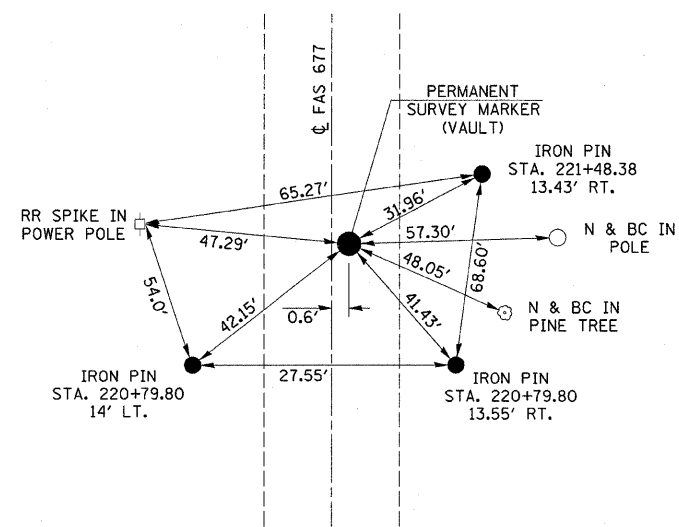
NOTE: NOT DRAWN TO SCALE

E 1/4 COR SECT 13-13-10
ALUM IDOT VAULT
STA. 194+62, 2.2' LT.



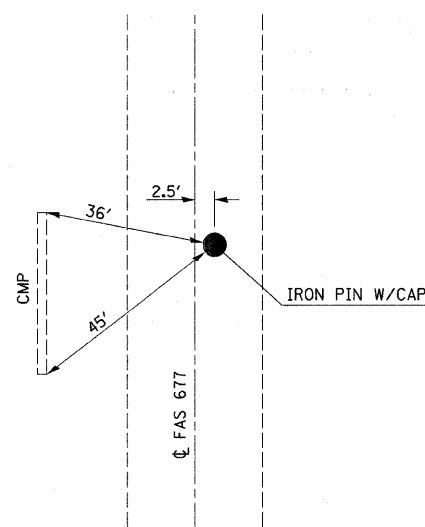
NOTE: NOT DRAWN TO SCALE

SE COR 12-13N-10E
PERMANENT SURVEY
MARKER (VAULT)
STA. 221+19.40, RT. 0.6'



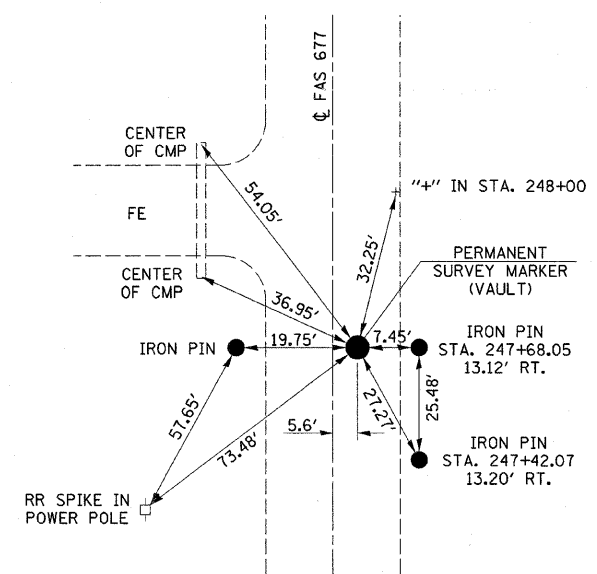
NOTE: NOT DRAWN TO SCALE

SW COR SECT 7-13-11
IRON PIN W/CAP
STA. 231+15, 2.5' RT.



NOTE: NOT DRAWN TO SCALE

E 1/4 COR 12-13N-10E
PERMANENT SURVEY
MARKER (VAULT)
STA. 247+68.8, 5.6' RT.



NOTE: NOT DRAWN TO SCALE

FILE NAME =	USER NAME = swartzw	DESIGNED -	REVISED -
c:\pw_work\pvdot\swartzw\d0242172\d77	507-shs-details.dgn	DRAWN -	REVISED -
	PLOT SCALE = 20.0000' / IN.	CHECKED -	REVISED -
	PLOT DATE = 1/31/2011	DATE -	REVISED -

STATE OF ILLINOIS
DEPARTMENT OF TRANSPORTATION

TIE POINTS

SCALE: NA SHEET NO. 1 OF 2 SHEETS STA. TO STA.

F.A.S. RTE.	SECTION	COUNTY	TOTAL SHEETS	SHEET NO.
677	(15-2,15-1,15,11)RS-1	COLES	63	18
FED. ROAD DIST. NO. ILLINOIS FED. AID PROJECT			CONTRACT NO. 74507	