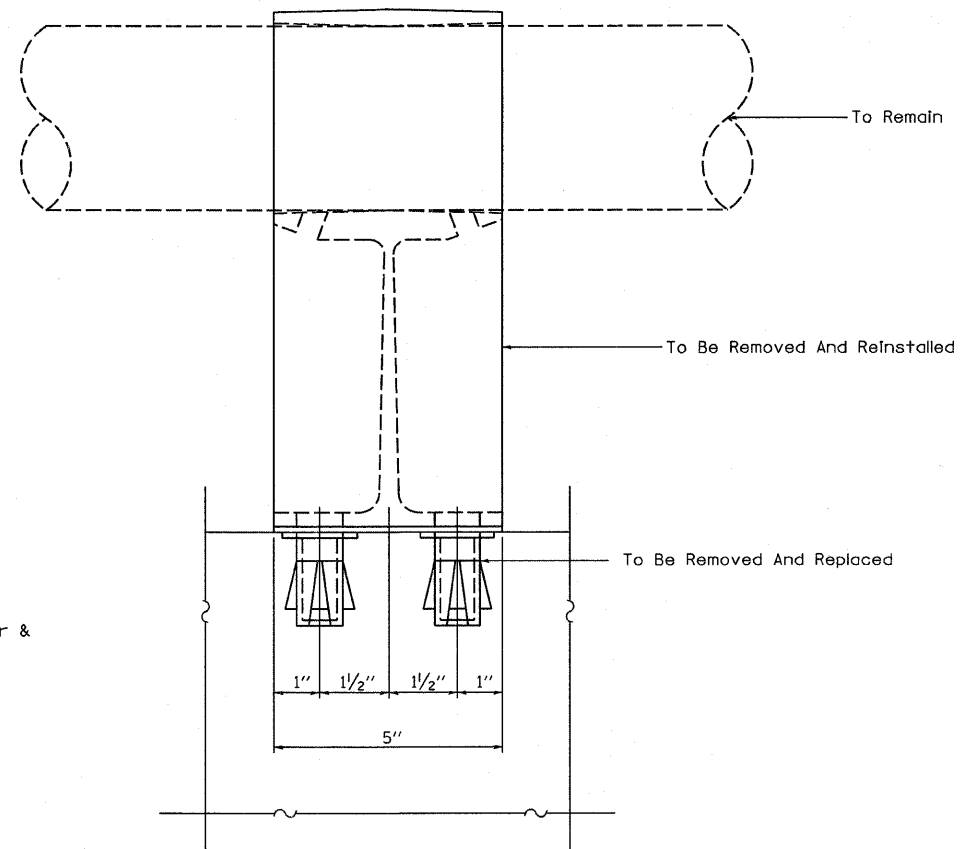


1/8 " Fabric Bearing Pad

5/8" ϕ Threaded Inserts. Provide 1- Stainless steel washer & 1- 5/8" ϕ x 2 1/2" Stainless steel Bolt with each insert
4-Required each post



To Remain

To Be Removed And Reinstalled

To Be Removed And Replaced

Note: New epoxy grouted threaded studs will be required at each location where posts are connected to new construction. Cost shall be included with Concrete Superstructure.

*5-2VB-1,5-2HB,5-2VB-2IBR-2

FILE NAME =	USER NAME = swartzw	DESIGNED <i>ESS</i>	REVISED -
c:\pwork\pwork\swartzw\g0207669\077	482-shr-brd-detai-0800005.dgn	DRAWN <i>ESS</i>	REVISED -
	PLOT SCALE = 28.0000 ' / IN.	CHECKED <i>MEA</i>	REVISED -
	PLOT DATE = 1/27/2011	DATE <i>12/27/2010</i>	REVISED -

**STATE OF ILLINOIS
DEPARTMENT OF TRANSPORTATION**

**RAIL SUPPORT DETAILS
SN. 080-0005**

SCALE: NA SHEET NO. 12 OF 13 SHEETS STA. TO STA.

F.A.P. RTE.	SECTION	COUNTY	TOTAL SHEETS	SHEET NO.
327	*	Richland	53	48
			CONTRACT NO. 74482	
ILLINOIS FED. AID PROJECT				