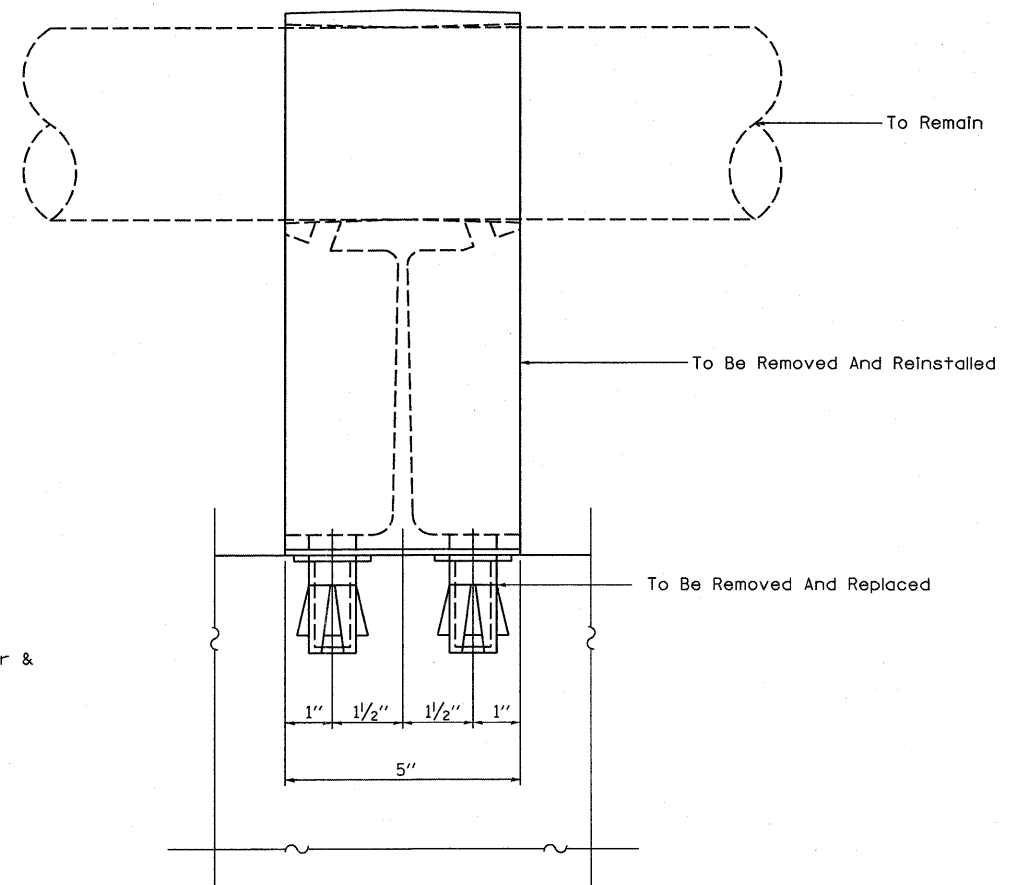


1/8" Fabric Bearing Pad

5/8"  $\phi$  Threaded Inserts. Provide 1- Stainless steel washer & 1-5/8"  $\phi$  x 2 1/2" Stainless steel Bolt with each insert  
4-Required each post



To Remain

To Be Removed And Reinstalled

To Be Removed And Replaced

Note: New epoxy grouted threaded studs will be required at each location where posts are connected to new construction. Cost shall be included with Concrete Superstructure.

\*15-2VB-1,5-2HB,5-2VB-2IBR-2

FILE NAME =	USER NAME = swartzw	DESIGNED <i>ESS</i>	REVISED -	<b>STATE OF ILLINOIS DEPARTMENT OF TRANSPORTATION</b>	<b>RAIL SUPPORT DETAILS SN. 080-0004</b>			F.A.P. RTE.	SECTION	COUNTY	TOTAL SHEETS	SHEET NO.
ca:\pw\work\p\idot\swartzw\g0207669\077	482-sht-brdetails-0000004.dgn	DRAWN <i>ESS</i>	REVISED -		327	.	Richland	53	35			
	PLOT SCALE = 20.0000' / IN.	CHECKED <i>MEA</i>	REVISED -		CONTRACT NO. 74482			ILLINOIS FED. AID PROJECT				
	PLOT DATE = 1/27/2011	DATE <i>12/27/2010</i>	REVISED -		SCALE: NA	SHEET NO. 14 OF 15 SHEETS	STA.	TO STA.				