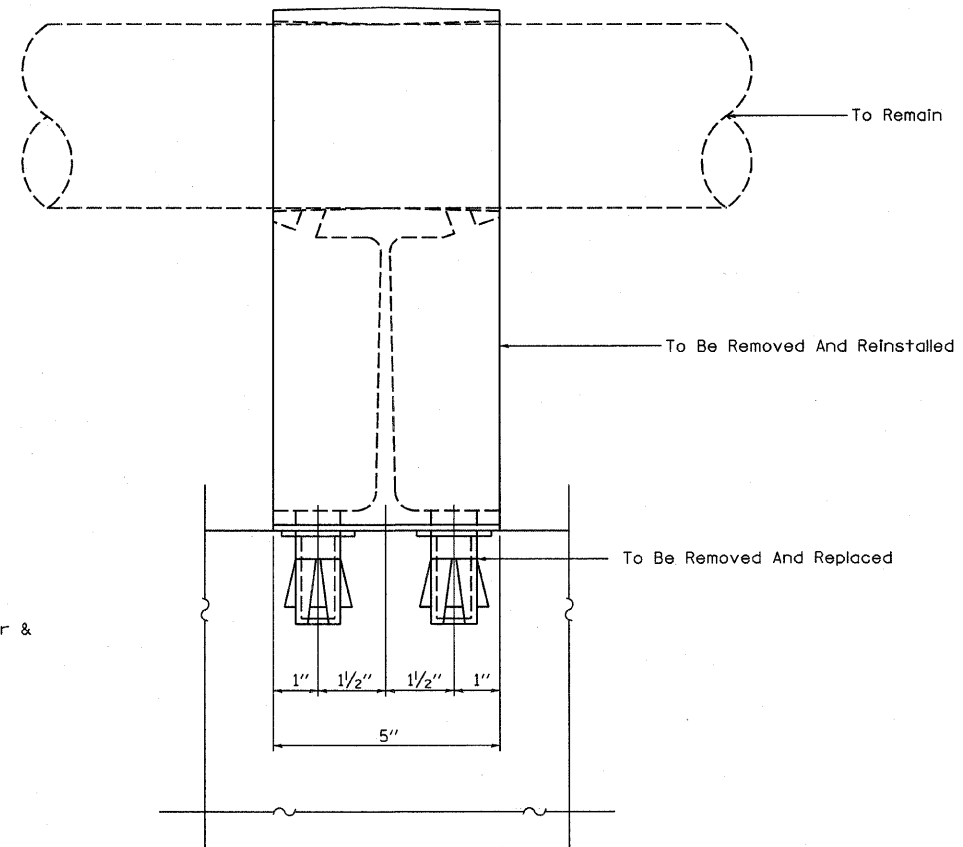


1/8" Fabric Bearing Pad

5/8" ϕ Threaded Inserts. Provide 1- Stainless steel washer & 1- 5/8" ϕ x 2 1/2" Stainless steel Bolt with each insert
4- Required each post



To Remain

To Be Removed And Reinstalled

To Be Removed And Replaced

Note: New epoxy grouted threaded studs will be required at each location where posts are connected to new construction. Cost shall be included with Concrete Superstructure.

FILE NAME =	USER NAME = swartzw	DESIGNED <i>ESS</i>	REVISED -
c:\pw_work\pwsdot\swartzw\d0207669\077482-sht-brdetails-0800003.dgn		DRAWN <i>ESS</i>	REVISED -
PLOT SCALE = 20,0000' / IN.		CHECKED <i>MEA</i>	REVISED -
PLOT DATE = 1/27/2011		DATE <i>12/27/2010</i>	REVISED -

STATE OF ILLINOIS
DEPARTMENT OF TRANSPORTATION

RAIL SUPPORT DETAILS
SN. 080-0003

SCALE: NA SHEET NO. 14 OF 15 SHEETS STA. TO STA.

*5-2VB-1,5-2HB,5-2VB-2IBR-2

F.A.P. RTE.	SECTION	COUNTY	TOTAL SHEETS	SHEET NO.
327		Richland	53	20
CONTRACT NO. 74482			ILLINOIS FED. AID PROJECT	