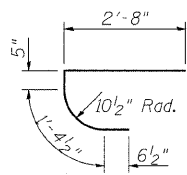
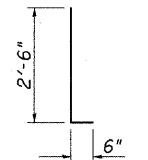


Hatched area indicates removal.



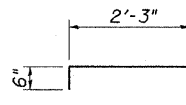
Bar c(E)



Bar d1(E)



Bar d2(E)



Bar x(E)



Bar d(E)

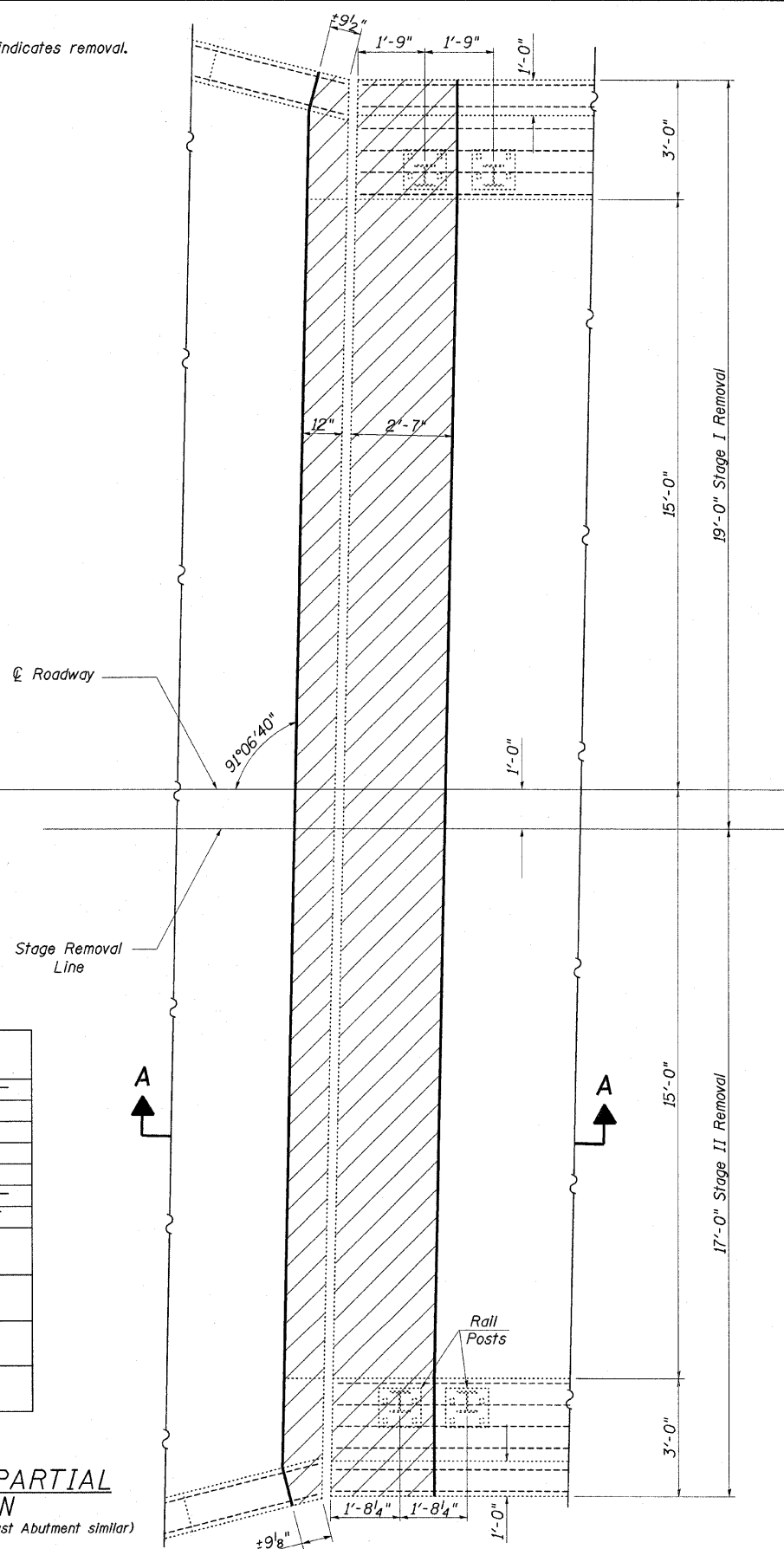
**BILL OF MATERIAL**

PER ABUTMENT

BAR	TOTAL	SIZE	LENGTH	SHAPE
a (E)	20	#5	17'-8"	—
c (E)	4	#4	5'-0"	U
d (E)	4	#4	2'-3"	⌋
d1(E)	16	#4	3'-0"	L
d2(E)	4	#4	2'-1"	□
h (E)	8	#6	16'-8"	—
x (E)	32	#5	2'-9"	⌋
REINFORCEMENT BARS (EP. CTD.)			POUND	730
CONCRETE REMOVAL			CU YD	6.4
CONCRETE SUPERSTRUCTURE			CU YD	6.4
BAR SPLICERS			EACH	14

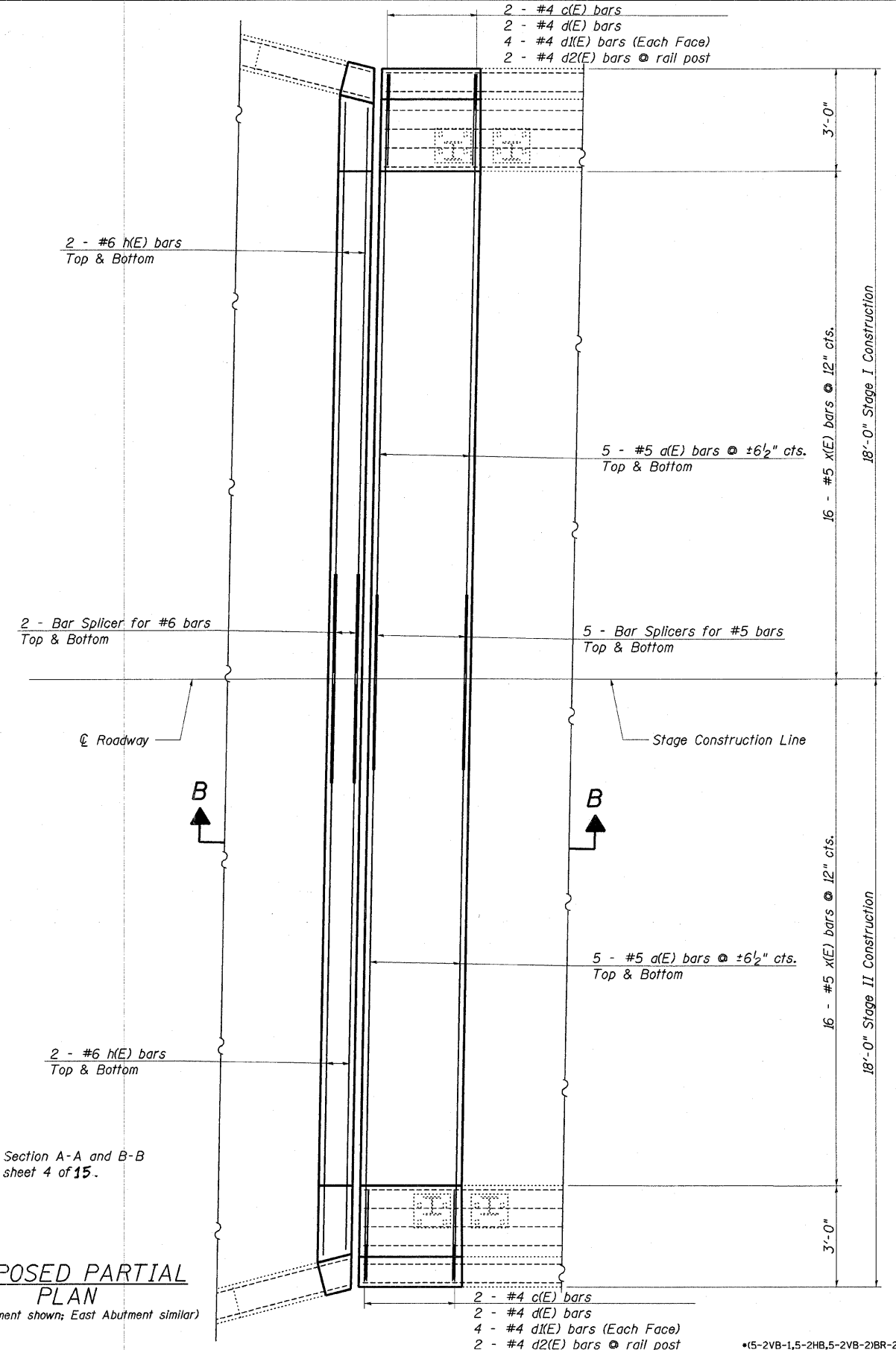
**EXISTING PARTIAL PLAN**

(West Abutment shown; East Abutment similar)



**PROPOSED PARTIAL PLAN**

(West Abutment shown; East Abutment similar)



For Section A-A and B-B see sheet 4 of 15.

FILE NAME =	USER NAME = swartzrw	DESIGNED - KLB	REVISED -
c:\pwork\pwork\swartzrw\d8207669\077	482-sht-brdetails-0820083.dgn	DRAWN - KLB	REVISED -
	PLOT SCALE = 20.0000 ' / IN.	CHECKED - MEA	REVISED -
	PLOT DATE = 1/27/2011	DATE - 12/1/10	REVISED -

STATE OF ILLINOIS  
DEPARTMENT OF TRANSPORTATION

EXPANSION JOINT REPLACEMENT DETAILS  
SN. 080-0003

SCALE: NA SHEET NO. 3 OF 15 SHEETS STA. TO STA.

F.A.P. RTE.	SECTION	COUNTY	TOTAL SHEETS	SHEET NO.
327	*	Richland	53	9
CONTRACT NO. 74482			ILLINOIS FED. AID PROJECT	