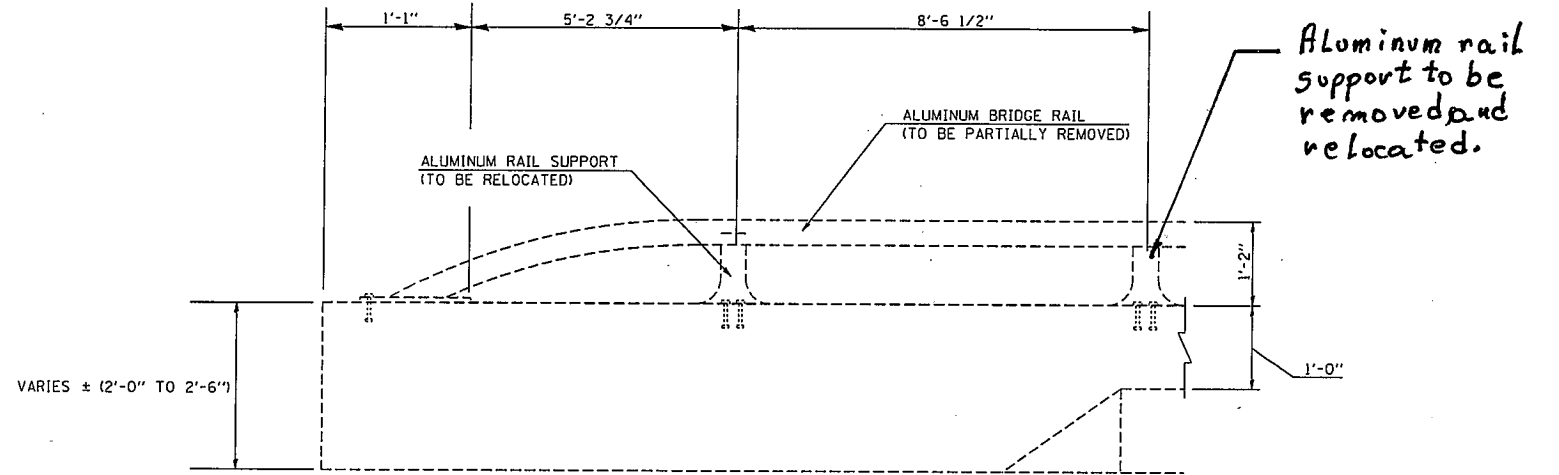
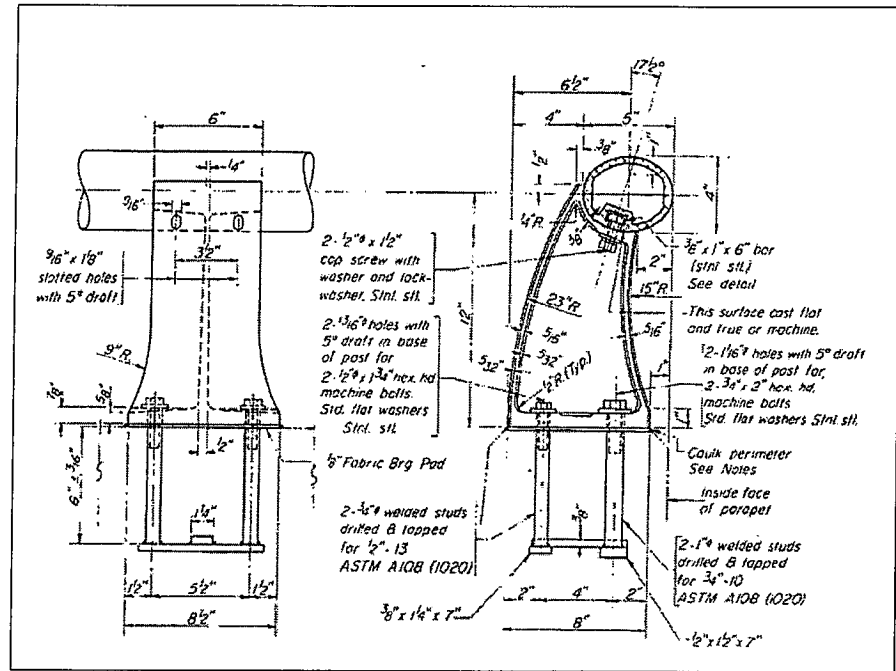
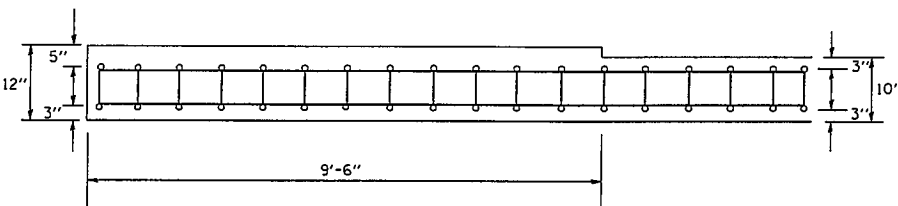


# BRIDGE APPROACH WINGWALL IMPROVEMENT FOR TYPES 6B & 6B(SP) GUARDRAIL ATTACHMENT TO STRUCTURE

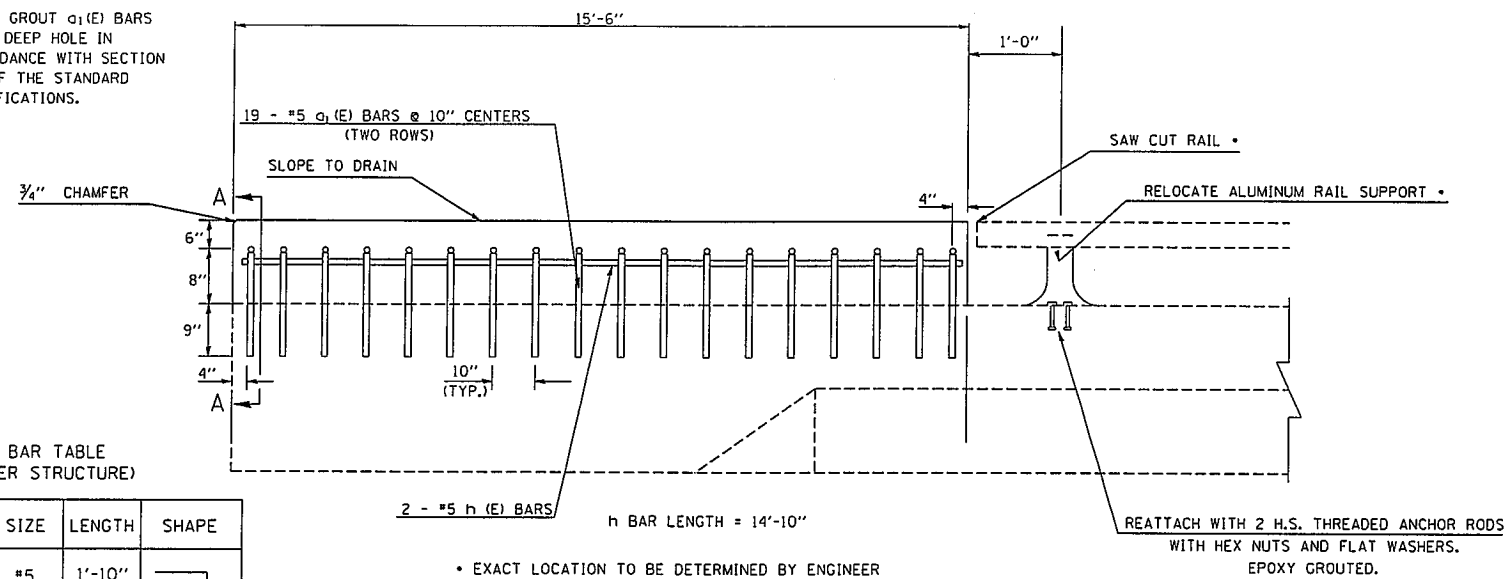
### DETAIL OF EXISTING RAILING FOR INFORMATION ONLY



EXISTING BRIDGE APPROACH WINGWALL



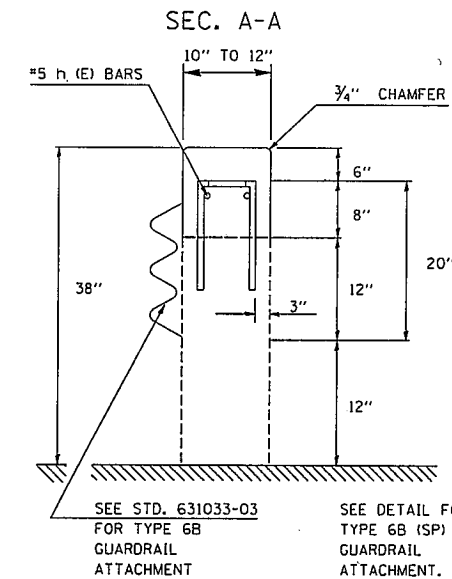
EPOXY GROUT  $\alpha_1(E)$  BARS IN 9" DEEP HOLE IN ACCORDANCE WITH SECTION 584 OF THE STANDARD SPECIFICATIONS.



BAR TABLE (PER STRUCTURE)

BAR	QTY.	SIZE	LENGTH	SHAPE
$\alpha_1(E)$	152	#5	1'-10"	
h(E)	8	#5	14'-10"	

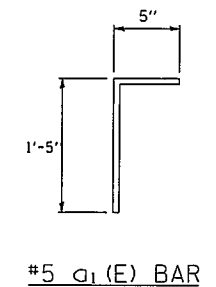
PROPOSED BRIDGE APPROACH WINGWALL SIDE VIEW



PROPOSED BRIDGE APPROACH WINGWALL END VIEW

**NOTES:**

ALL EQUIPMENT, MATERIALS, AND LABOR REQUIRED TO RELOCATE ALUMINUM RAIL SUPPORTS AND REMOVE AND DISPOSE OF ALUMINUM BRIDGE RAIL WILL NOT BE MEASURED FOR PAYMENT AND SHALL BE INCLUDED IN THE CONTRACT UNIT PRICE FOR CONCRETE SUPERSTRUCTURE.



BILL OF MATERIALS (EACH PARAPET)		UNIT	
CONCRETE SUPERSTRUCTURE		CU YD	.63
REINFORCEMENT BARS, EPOXY COATED		POUNDS	208