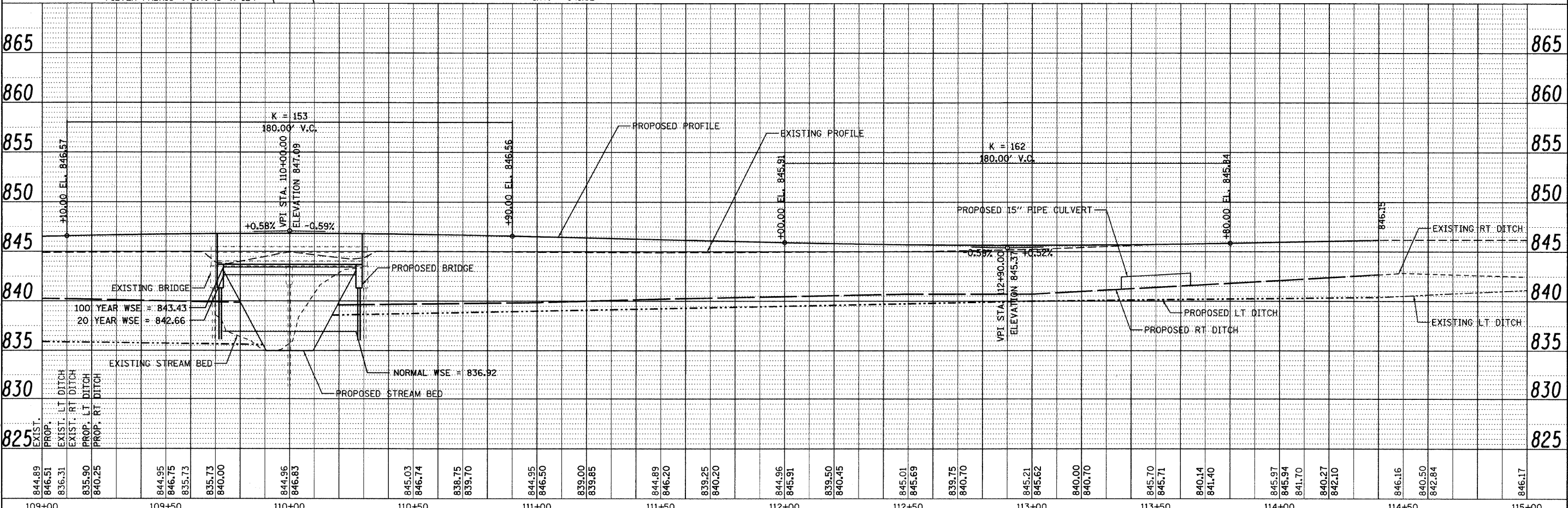
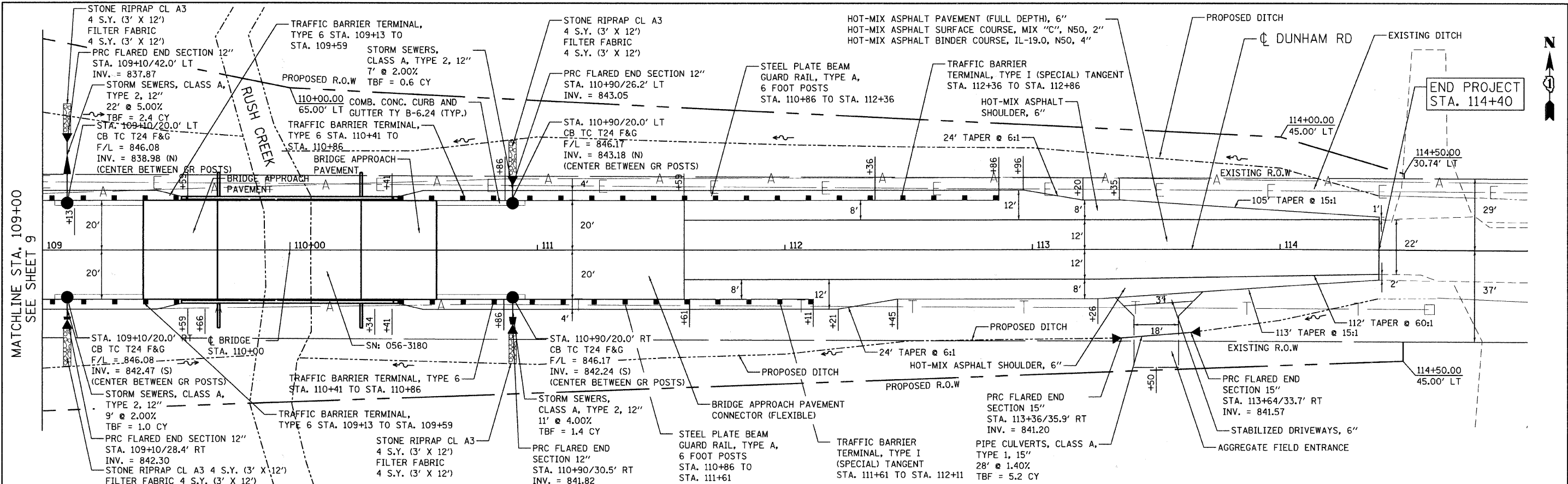


DATE	
BY	
DESIGNED	
CHECKED	
PLOTTED	
NOTE BOOK	
ALIGNED	
CHECKED	
FILE NAME	

DATE	
BY	
DESIGNED	
CHECKED	
PLOTTED	
NOTE BOOK	
GRADES CHECKED	
STRUCTURE NOTATIONS CHG	



844.89	846.51	836.31	835.90	840.25	844.95	846.75	835.73	835.73	840.00	844.96	846.83	845.03	846.74	838.75	839.70	844.95	846.50	839.00	839.85	844.89	846.20	839.25	840.20	844.96	845.91	839.50	840.45	845.01	845.69	839.75	840.70	845.21	845.62	840.00	840.70	845.70	845.71	840.14	841.40	845.97	845.94	841.70	840.27	842.10	846.16	840.50	842.84	846.17
109+00	109+50	110+00	110+50	111+00	111+50	112+00	112+50	113+00	113+50	114+00	114+50	115+00																																				

Ciorba Group, Inc.
CONSULTING ENGINEERS
6507 North Cumberland Avenue, Suite 402
Chicago, Illinois 60666
Tel. 773.775.4009 Fax 773.775.4014

USER NAME = espina	DESIGNED - DKD	REVISED -
PLLOT SCALE = 20.0000' / IN.	DRAWN - DKD	REVISED -
PLLOT DATE = 2/4/2011	CHECKED - CLG	REVISED -
	DATE - 02/07/2011	REVISED -

MCHENRY COUNTY DIVISION OF TRANSPORTATION

PROPOSED PLAN AND PROFILE

SCALE: 1" = 20' SHEET NO. OF SHEETS STA. TO STA.

TR. RTE.	SECTION	COUNTY	TOTAL SHEETS	SHEET NO.
	07-00340-00-BR	MCHENRY	46	10
CONTRACT NO. 63552				
FED. ROAD DIST. NO. 1 [ILLINOIS] FED. AID PROJECT				