

F.A.U. RTE.	SECTION	COUNTY	TOTAL SHEETS	SHEET NO.
126	08-00107-00-FP	McHENRY	50	1
		ILLINOIS	CONTRACT NO. 63546	

**INDEX OF SHEETS**

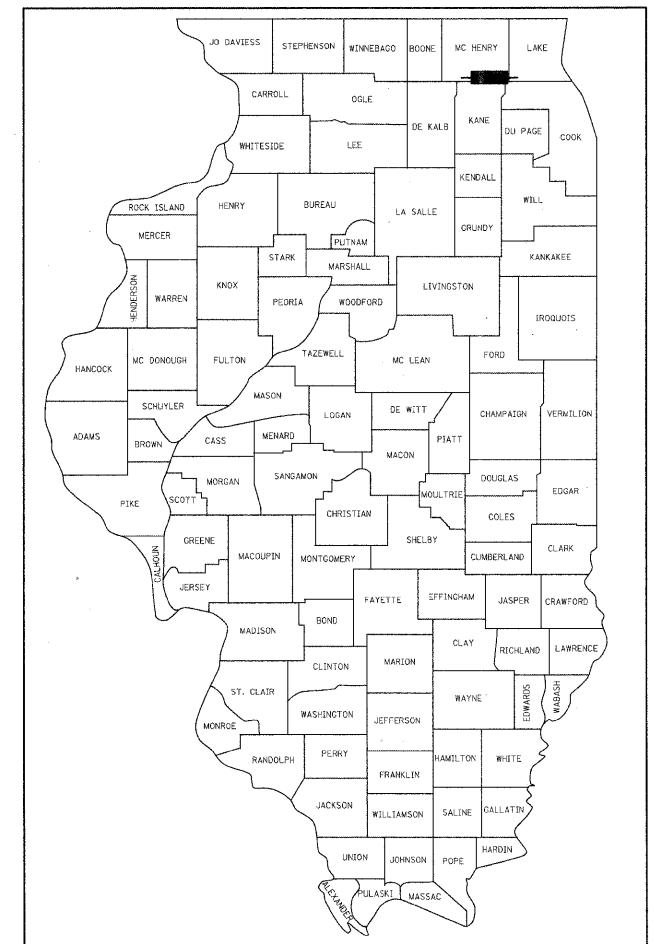
SHEET No.	DESCRIPTION
1	COVER SHEET
2	GENERAL NOTES
3	SUMMARY OF QUANTITIES
4	SCHEDULE OF QUANTITIES
5	TYPICAL SECTIONS
6	ALIGNMENT, TIES AND BENCHMARKS
7	DETOUR PLAN
8	MAINTENANCE OF TRAFFIC NOTES
9-10	MAINTENANCE OF TRAFFIC PLANS
11-13	ROADWAY PLAN AND PROFILE
14	BIKEPATH PROFILE
15-17	DRAINAGE PLAN AND PROFILE
18	PAVEMENT MARKING AND LANDSCAPING PLANS
19-21	EROSION AND SEDIMENT CONTROL PLANS
22	EROSION AND SEDIMENT CONTROL DETAILS
23-29	CONSTRUCTION DETAILS
30-33	DISTRICT ONE STANDARDS (BD22, BD32, TC13, TS05)
34-50	CROSS SECTIONS

STATE STANDARDS	
STD 000001-06	STANDARD SYMBOLS, ABBREVIATIONS AND PATTERNS
STD 420001-07	PAVEMENT JOINTS
STD 424001-05	CURB RAMPS FOR SIDEWALKS
STD 442201-03	CLASS C AND D PATCHES
STD 542301-03	PRECAST REINFORCED CONCRETE FLARED END SECTION
STD 601001-04	SUB-SURFACE DRAINS
STD 602001-02	CATCH BASIN TYPE A
STD 602011-02	CATCH BASIN TYPE C
STD 602401-03	MANHOLE TYPE A
STD 602601-02	PRECAST REINFORCED CONCRETE FLAT SLAB TOP
STD 602701-02	MANHOLE STEPS
STD 606001-04	CONCRETE CURB TYPE B AND COMBINATION CONCRETE CURB AND GUTTER
STD 606301-04	PC CONCRETE ISLANDS AND MEDIANS
STD 701006-03	OFF-RD OPERATIONS, 2L, 2W, 15' TO 24" FROM EDGE PAVEMENT EDGE
STD 701011-02	OFF-RD MOVING OPERATIONS, 2L, 2W, DAY ONLY
STD 701301-04	LANE CLOSURE, 2L, 2W, SHORT TIME OPERATIONS
STD 701311-03	LANE CLOSURE, 2L, 2W, MOVING OPERATIONS DAY ONLY
STD 701501-06	URBAN LANE CLOSURE, 2L, 2W, UNDIVIDED
STD 701801-04	LANE CLOSURE MULTILANE 1W OR 2W CROSSWALK OR SIDEWALK CLOSURE
STD 701901-01	TRAFFIC CONTROL DEVICES
STD 720001-01	SIGN PANEL MOUNTING DETAILS
STD 720006-02	SIGN PANEL ERECTION DETAILS
STD 728001-01	TELESCOPING STEEL SIGN SUPPORT
STD 878001-08	CONCRETE FOUNDATION DETAILS

STATE OF ILLINOIS  
DEPARTMENT OF TRANSPORTATION  
DIVISION OF HIGHWAYS

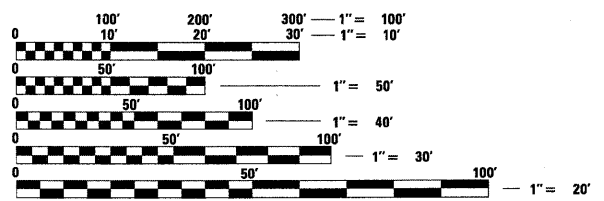
# PLANS FOR PROPOSED FEDERAL AID HIGHWAY

F.A.U. 126 (PINGREE ROAD)  
FROM RAKOW ROAD TO U.S. ROUTE 14  
RECONSTRUCTION  
SECTION NO. 08-00107-00-FP  
PROJECT NO. M-9003(251)  
JOB NO. C-91-362-09  
McHENRY COUNTY



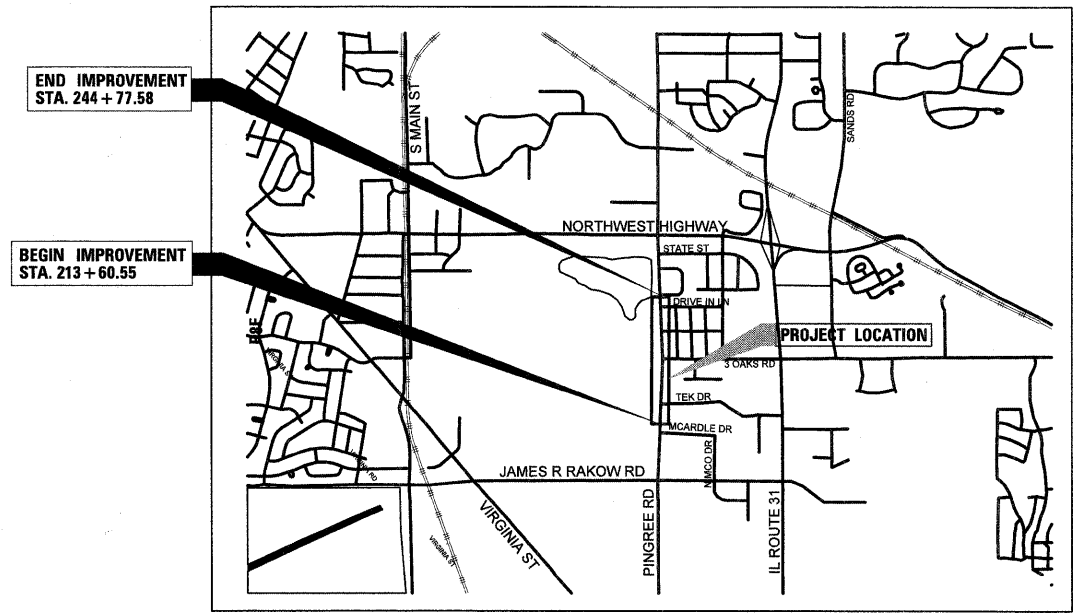
**PROJECT IS LOCATED IN THE  
CITY OF CRYSTAL LAKE**

**TRAFFIC DATA:**  
2008 ADT = 7,300 VEHICLES  
2030 ADT = 10,000 VEHICLES  
POSTED SPEED LIMIT = 40 MPH  
FUNCTIONAL CLASSIFICATION = COLLECTOR



FULL SIZE PLANS HAVE BEEN PREPARED USING STANDARD ENGINEERING SCALES. REDUCED SIZED PLANS WILL NOT CONFORM TO STANDARD SCALES. IN MAKING MEASUREMENTS ON REDUCED PLANS, THE ABOVE SCALES MAY BE USED.

J.U.L.I.E.  
JOINT UTILITY LOCATION INFORMATION FOR EXCAVATION  
1-800-892-0123  
OR 811



SEC 9 143N R 8E      SCALE - 1" = 2,000' ALGONQUIN TOWNSHIP      SEC 10 143N R 8E 3RD PM  
GROSS LENGTH = 3,117 FT. = 0.59 MILE  
NET LENGTH = 3,117 FT. = 0.59 MILE

STATE OF ILLINOIS  
DEPARTMENT OF TRANSPORTATION  
DIVISION OF HIGHWAYS

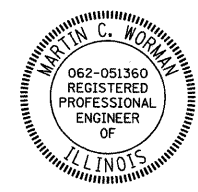
APPROVED DECEMBER 31, 2010  
*[Signature]*  
CITY ENGINEER, CITY OF CRYSTAL LAKE

PASSED JANUARY 7, 2011  
*[Signature]*  
DISTRICT 1 ENGINEER OF LOCAL ROADS AND STREETS

RELEASING FOR BID BASED ON LIMITED REVIEW JANUARY 7, 2011  
*[Signature]*  
DEPUTY DIRECTOR OF HIGHWAYS, REGION ONE ENGINEER

Signed Martin C. Worman  
MARTIN C. WORMAN, P.E., TL Lic. No. 062-051360  
Expires 11-30-2011

Date JANUARY 6, 2011



**PRINTED BY THE AUTHORITY  
OF THE STATE OF ILLINOIS**

**CHRISTOPHER B. BURKE ENGINEERING LTD.**  
8578 West Higgins Road, Suite 400  
Rosemont, Illinois 60018  
(847) 823-0500

PROGRAM AND OFFICE ENGINEER: CHARLES F. RIDDLE, P.E. (847) 705-4406 SCHAUMBURG, IL

**CONTRACT NO. 63546**