

F.A.P. RTE.	SECTION	COUNTY	TOTAL SHEETS	SHEET NO.
338	114-LS-1	WILL	28	1
ILLINOIS			CONTRACT NO. 60M67	

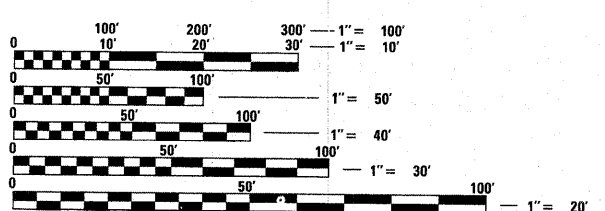
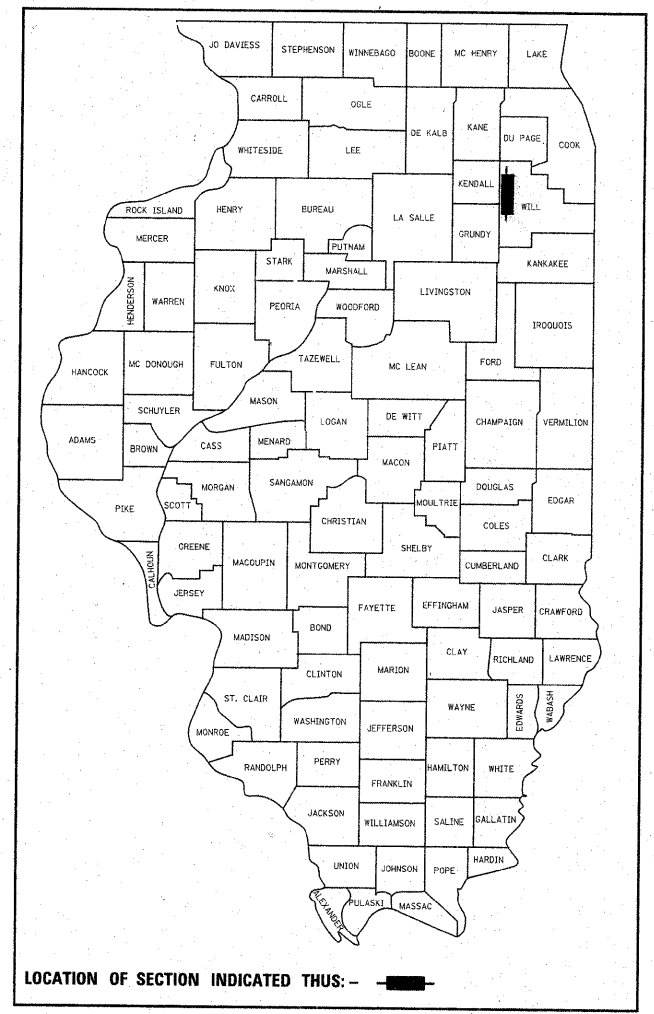
STATE OF ILLINOIS  
DEPARTMENT OF TRANSPORTATION  
DIVISION OF HIGHWAYS

**PROPOSED  
HIGHWAY PLANS**

FAP338 IL. ROUTE 59 (I-55 TO IL. 126)  
SECTION 114-LS-1  
PROJECT: NHF-0338(042)  
LANDSCAPING AND VEGETATION MANAGEMENT  
WILL COUNTY  
C-91-151-11

FOR INDEX OF SHEETS, SEE SHEET NO. 2

IMPROVEMENT LOCATED IN: VILLAGE OF SHOREWOOD,  
UNINCORPORATED WILL COUNTY, CITY OF JOLIET,  
AND THE VILLAGE OF PLAINFIELD

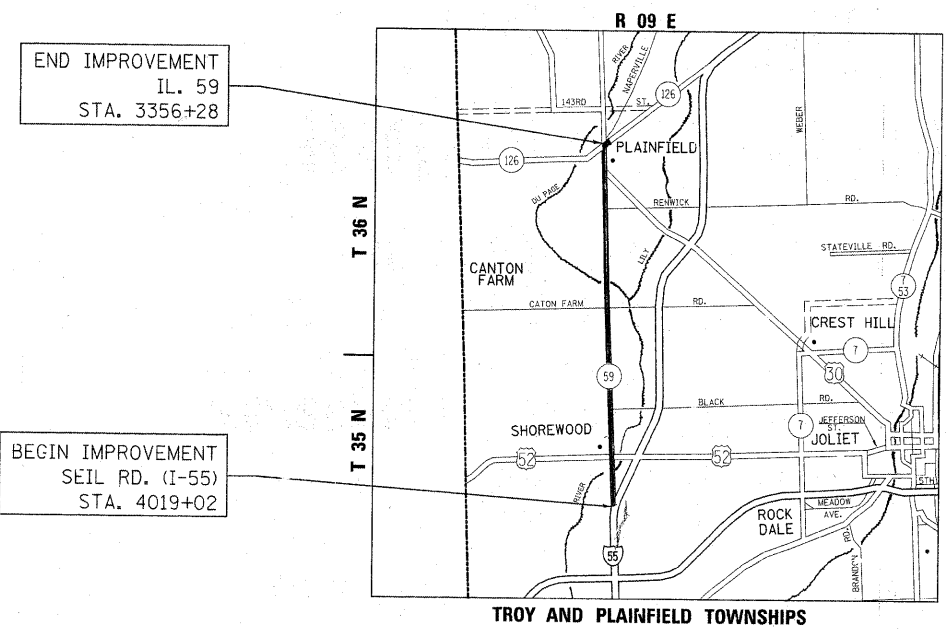


FULL SIZE PLANS HAVE BEEN PREPARED USING STANDARD ENGINEERING SCALES. REDUCED SIZED PLANS WILL NOT CONFORM TO STANDARD SCALES. IN MAKING MEASUREMENTS ON REDUCED PLANS, THE ABOVE SCALES MAY BE USED.

J.U.L.I.E.  
JOINT UTILITY LOCATION INFORMATION FOR EXCAVATION  
1-800-892-0123  
OR 811

PROJECT MANAGER R. WANNER /S. LIPKIE

CONTRACT NO. 60M67



END IMPROVEMENT  
IL. 59  
STA. 3356+28

BEGIN IMPROVEMENT  
SEIL RD. (I-55)  
STA. 4019+02

TROY AND PLAINFIELD TOWNSHIPS  
LOCATION MAP

GROSS LENGTH = 31,823 FT. = 6.27 MILE  
NET LENGTH = 31,100 FT. = 5.89 MILE

TRAFFIC DATA:

IL 59 ADT  
I-55 TO US 52: ADT = 23,000 (2020)  
US 52 TO CATON FARM ROAD: ADT 33,000 (2030)  
CATON FARM ROAD TO US 30: ADT 30,600 (2030)  
US 30 TO IL 126: ADT = 40,200 (2030)

IL 59 SPEED LIMITS

SEIL RD TO BASS ST: POSTED = 45 MPH; DESIGN SPEED = 45 MPH  
BASS ST TO US 52: POSTED = 35 MPH; DESIGN SPEED = 45 MPH  
US 52 TO MEADOW DRIVE: DESIGN SPEED = 50 MPH; POSTED = 45 MPH  
ROBERTS AVE TO US 30: POSTED = 35 MPH  
US 30 TO IL 16: POSTED = 30 MPH



LOCATION OF SECTION INDICATED THUS: - [thick black line] -

STATE OF ILLINOIS  
DEPARTMENT OF TRANSPORTATION  
DIVISION OF HIGHWAYS

SUBMITTED FEBRUARY 10, 2011

*Diane M. O'Keefe*  
DEPUTY DIRECTOR OF HIGHWAYS, REGION ENGINEER

March 05 2011

*Scott E. Stitt, P.E.*  
acting ENGINEER OF DESIGN AND ENVIRONMENT

March 05 2011

*Christine M. Reed*  
DIRECTOR OF HIGHWAYS, CHIEF ENGINEER

**PRINTED BY THE AUTHORITY  
OF THE STATE OF ILLINOIS**

GENERAL NOTES

INDEX OF SHEETS

SHEET NUMBER	DESCRIPTION
1	COVER SHEET
2	INDEX OF SHEETS STATE STANDARDS GENERAL NOTES COMMITMENTS
3	SUMMARY OF QUANTITIES
4	CALENDAR OF CONSTRUCTION AND ESTABLISHMENT WORK
5 - 18	LANDSCAPING PLANS
19 - 25	MEDIAN LANDSCAPE DETAILS TRAFFIC CONTROL DETAILS
26	TC-10
27	TC-14
28	TC-22

STATE STANDARDS

701001-02	OFF-ROAD OPERATIONS, 2L, 2W MORE THAN 15'
701006-03	OFF-ROAD OPERATIONS, 2L, 2W, 15' TO 24" FROM PAVEMENT EDGE
701011-02	OFF-ROAD OPERATIONS, 2L, 2W, DAY ONLY
701101-02	OFF-ROAD OPERATIONS, MULTILANE, 15' TO 24" FROM PAVEMENT EDGE
701106-02	OFF-ROAD OPERATIONS, MULTILANE MORE THAN 15' AWAY FROM PAVEMENT EDGE
701301-04	LANE CLOSURE 2L, 2W SHORT TIME OPERATIONS
701311-03	LANE CLOSURE, 2L, 2W MOVING OPERATIONS-DAY ONLY
701426-04	LANE CLOSURE, MULTILANE, INTERMITTANT OR MOVING OPERATIONS, FOR SPEEDS ≥ 45 MPH
701427	LANE CLOSURE, MULTILANE, INTERMITTANT OR MOVING OPERATIONS, FOR SPEEDS ≤ 40 MPH
701601-07	URBAN LANE CLOSURE, MULTILANE, 1W OR 2W WITH NONTRAVERSABLE MEDIAN
701901-01	TRAFFIC CONTROL DEVICES

- THE CONTRACTOR SHALL CONDUCT HIS OWN INVESTIGATIONS INTO THE LOCATION, SIZE, DEPTH, AND NATURE OF ANY AND ALL EXISTING UTILITIES WHICH MAY IMPACT THE WORK UNDER THIS CONTRACT. ANY EXISTING UTILITIES WHICH ARE TO REMAIN IN SERVICE SHALL BE FULLY PROTECTED BY THE CONTRACTOR AND ANY DAMAGE CAUSED BY THE CONSTRUCTION SHALL BE IMMEDIATELY REPAIRED AT THE CONTRACTOR'S OWN EXPENSE TO THE SATISFACTION OF THE ENGINEER. THE CONTRACTOR SHALL BE RESPONSIBLE FOR THE PROTECTION OF ANY AND ALL SURFACE AND UNDERGROUND UTILITIES, EVEN THOUGH THEY ARE NOT IDENTIFIED ON THE PLANS.
- PRIOR TO EXCAVATING, CALL JOINT UTILITIES LOCATION INFORMATION FOR EXCAVATORS (J.U.L.I.E.) AT 1.800.892.0123.
- BEFORE ANY EXCAVATION STARTS, THE LANDSCAPE CONTRACTOR SHALL CONTACT THE IDOT ELECTRICAL MAINTENANCE CONTRACTOR, 48 HOURS PRIOR TO ANY EXCAVATION TO MARK OUT UNDERGROUND IDOT CABLES. THE LANDSCAPE CONTRACTOR SHALL PRESERVE THESE MARKINGS; ANY ADDITIONAL REQUESTS MADE BY THE LANDSCAPE CONTRACTOR WILL BE AT THEIR OWN EXPENSE. THE UNDERGROUND IDOT CABLES SHOWN ON THE PLAN SHEETS ARE NOT AN ACCURATE REPRESENTATION OF THE ACTUAL LOCATION.
- THE CONTRACTOR SHALL NOT BE ALLOWED TO SET UP A YARD OR FIELD OFFICE ON STATE PROPERTY WITHOUT WRITTEN PERMISSION FROM IDOT.
- THE CONTRACTOR SHALL USE CARE IN GRADING OR EXCAVATING NEAR ANY AND ALL EXISTING ITEMS THAT WILL NOT BE REMOVED INCLUDING PREVIOUSLY SEEDED AREAS. ANY DAMAGE DONE TO EXISTING ITEMS BY THE CONTRACTOR SHALL BE REPAIRED AT THE CONTRACTOR'S OWN EXPENSE TO THE SATISFACTION OF THE ENGINEER.
- THE CONTRACTOR SHALL CONTACT THE DISTRICT ONE TRAFFIC CONTROL SUPERVISOR AT (847) 705-4470 A MINIMUM OF 72 HOURS IN ADVANCE OF BEGINNING WORK.
- ANY SIGNS OR PAVEMENT MARKERS DAMAGED OR DESTROYED AS A RESULT OF LANDSCAPE WORK SHALL BE REPLACED AND PAID FOR BY THE CONTRACTOR.
- IT SHALL BE THE CONTRACTOR'S RESPONSIBILITY TO VERIFY ALL DIMENSION AND CONDITIONS EXISTING IN THE FIELD PRIOR TO CONSTRUCTION AND ORDERING OF MATERIALS.
- THE CONTRACTOR SHALL TAKE ALL NECESSARY SAFETY PRECAUTIONS TO PROTECT AND PROVIDE ACCESS TO ADJUTING PROPERTY, UTILITIES, PEDESTRIANS, AND VEHICULAR TRAFFIC.
- WHEN, DURING THE CONSTRUCTION OPERATION, ANY LOOSE MATERIAL IS DEPOSITED IN THE FLOW LINE OF DITCHES, GUTTERS OR OTHER DRAINAGE STRUCTURES SO THAT THE NATURAL FLOW OF WATER IS OBSTRUCTED, IT SHALL BE REMOVED AT THE CLOSE OF EACH DAY BY THE CONTRACTOR. COST SHALL BE INCLUDED IN THE CONTRACT.
- UNDERBRUSH OR DEBRIS AT PLANTING LOCATIONS SHALL BE REMOVED AND DISPOSED OF IN ACCORDANCE WITH SECTION 202.03 OF THE IDOT STANDARD SPECIFICATIONS. THIS WORK WILL NOT BE PAID FOR SEPARATELY, BUT THE COSTS SHALL BE CONSIDERED AS INCLUDED IN THE CONTRACT UNIT PRICES FOR THE CONSTRUCTION ITEMS INVOLVED, AND NO ADDITIONAL COMPENSATION WILL BE ALLOWED.
- THE CONTRACTOR SHALL PROTECT ALL EXISTING PLANT MATERIAL FROM DAMAGE FOR WHICH THE CONTRACT DOES NOT PROVIDE REMOVAL. THE PROTECTION OF EXISTING PLANT MATERIAL INCLUDING PREVIOUSLY SEEDED AREAS AND THE REPAIR OR REPLACEMENT OF EXISTING PLANT MATERIAL DAMAGED BY THE CONTRACTOR SHALL BE DONE IN ACCORDANCE WITH THE REQUIREMENTS OF SECTION 201 OF THE STANDARD SPECIFICATIONS UNLESS OTHERWISE NOTED.

13. NO SUBSTITUTIONS OF PLANT MATERIAL, QUANTITIES OR SIZES SHALL BE ALLOWED UNLESS APPROVED BY THE ENGINEER.

14. CONTRACTOR SHALL REPAIR IN KIND ANY OF THE VARIOUS EXISTING GRASS / WILDFLOWER AREAS DAMAGED AS A RESULT OF LANDSCAPE OPERATIONS. THIS WORK WILL NOT BE PAID FOR SEPARATELY, BUT THE COSTS SHALL BE CONSIDERED AS INCLUDED IN THE CONTRACT UNIT PRICES FOR THE CONSTRUCTION ITEMS INVOLVED, AND NO ADDITIONAL COMPENSATION WILL BE ALLOWED. THE CONTRACTOR SHALL UTILIZE THE VARIOUS SEED MIXTURES INCLUDED IN THE SPECIFICATIONS AND AS SHOWN ON THE PLANS FOR THIS REPAIR WORK.

15. THE CONTRACTOR SHALL NOT BE ALLOWED TO PROCEED WITH ANY PLANTING WORK UNTIL ALL UTILITY OWNERS FIELD LOCATE THEIR FACILITIES WHICH MAY INTERFERE WITH CONSTRUCTION OPERATIONS. THE ACTUAL LOCATION OF PROPOSED LANDSCAPING WILL BE ADJUSTED IN THE FIELD TO AVOID UTILITIES.

16. NO PLANT MATERIAL IS TO BE INSTALLED ON SITE WITHOUT APPROPRIATE IDOT ORANGE PLANT SEAL.

17. APPROVED WATERING EQUIPMENT SHALL BE AT THE SITE OF THE WORK AND IN OPERATIONAL CONDITION PRIOR TO STARTING THE PLANTING OPERATION AND DURING ALL PLANTING OPERATIONS, OR PLANTING WILL NOT BE ALLOWED.

18. ALL TREE AND SHRUB BEDS SHALL RECEIVE A MINIMUM 4 INCHES OF MULCH. NEWLY INSTALLED TREES NOT LOCATED WITHIN A BED SHALL BE MULCHED WITH A SIX-FOOT DIAMETER RING (REMOVE EXISTING TURF) WITH A CULTIVATED EDGE AT THE BASE OF EACH TREE. THIS WORK WILL NOT BE PAID FOR SEPARATELY, BUT THE COSTS SHALL BE CONSIDERED AS INCLUDED IN THE CONTRACT UNIT PRICES FOR THE CONSTRUCTION ITEMS INVOLVED, AND NO ADDITIONAL COMPENSATION WILL BE ALLOWED.

19. UNLESS NOTED OTHERWISE, ALL SHRUBS SHALL BE STAGGERED AND PLANTED IN MULCHED BEDS. THE EDGE OF THE MULCH BED SHALL EXTEND A MINIMUM OF THREE (3) FEET BEYOND THE CENTERS OF THE PERIPHERAL PLANTS IN THE BEDS.

20. THE EDGE OF A MULCH BED FOR SHRUB PLANTINGS ADJACENT TO A WALL, FENCE, BARRIER WALL OR OTHER FIXED OBJECT SHALL EXTEND TO THE OBJECT.

COMMITMENTS

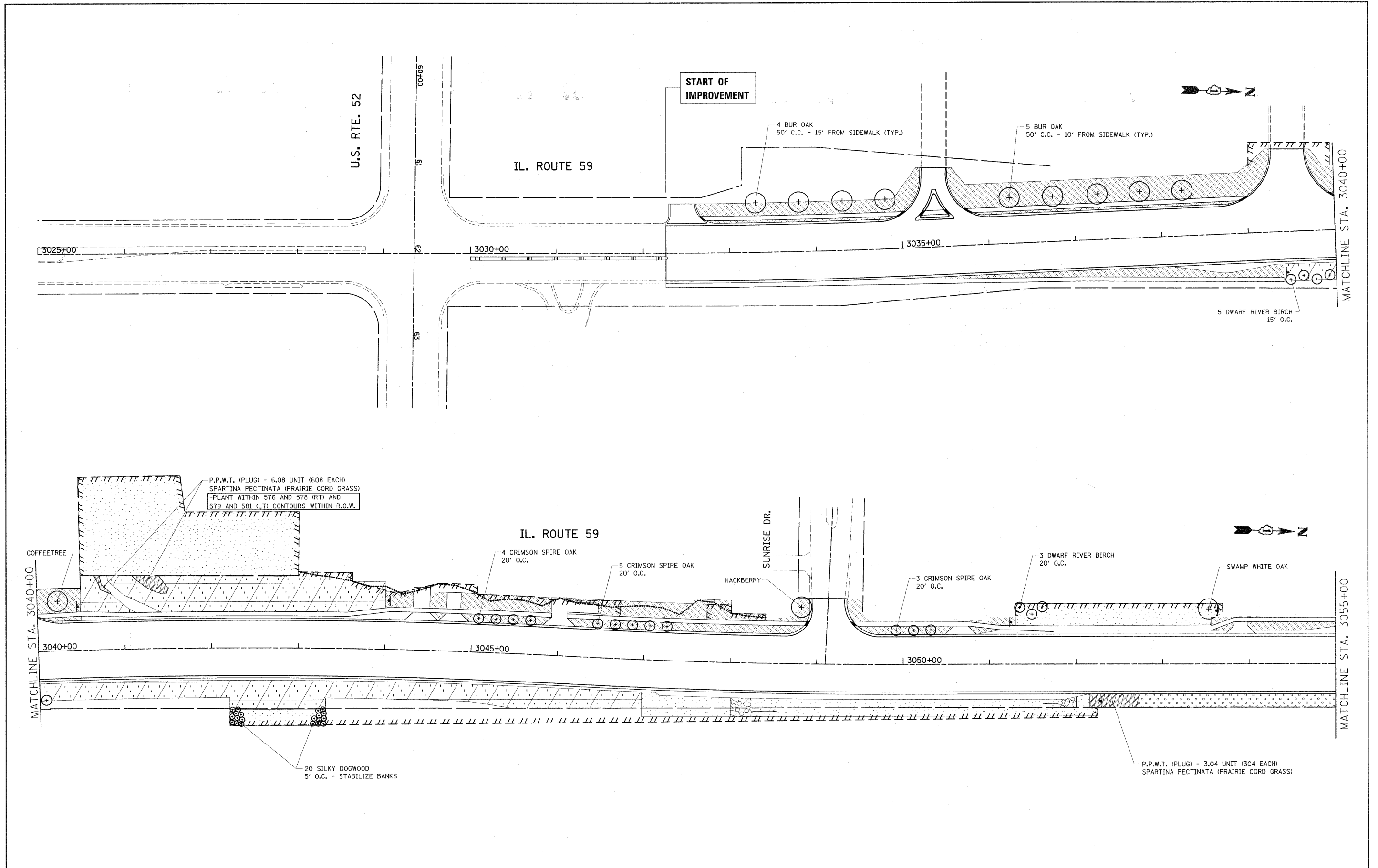
- TO SCREEN THE IL ROUTE 59 ROADWAY FROM THE WEDGEWOOD GOLF COURSE. PLANTING SHALL BE PROVIDED WITHIN THE RIGHT OF WAY ADJACENT TO THE GOLF COURSE.
- LANDSCAPING OF THE PROPOSED BARRIER MEDIAN SHALL BE COORDINATED WITH THE CITY OF JOLIET AND THE VILLAGE OF PLAINFIELD.

FILE NAME =	USER NAME = bauerdl	DESIGNED -	REVISED -	<b>STATE OF ILLINOIS DEPARTMENT OF TRANSPORTATION</b>	<b>STANDARDS, GENERAL NOTES AND COMMITMENTS</b>				F.A.P. RTE.	SECTION	COUNTY	TOTAL SHEETS	SHEET NO.
c:\pwwork\pwwork\baerd\1d0240764\ML1511-ghtrcover.dgn		DRAWN -	REVISED -		338	114-LS-1	WILL	20	2				
PLOT SCALE = 50.0000' / IN.		CHECKED -	REVISED -		CONTRACT NO. 60M67								
PLOT DATE = 2/25/2011		DATE -	REVISED -		ILLINOIS FED. AID PROJECT								

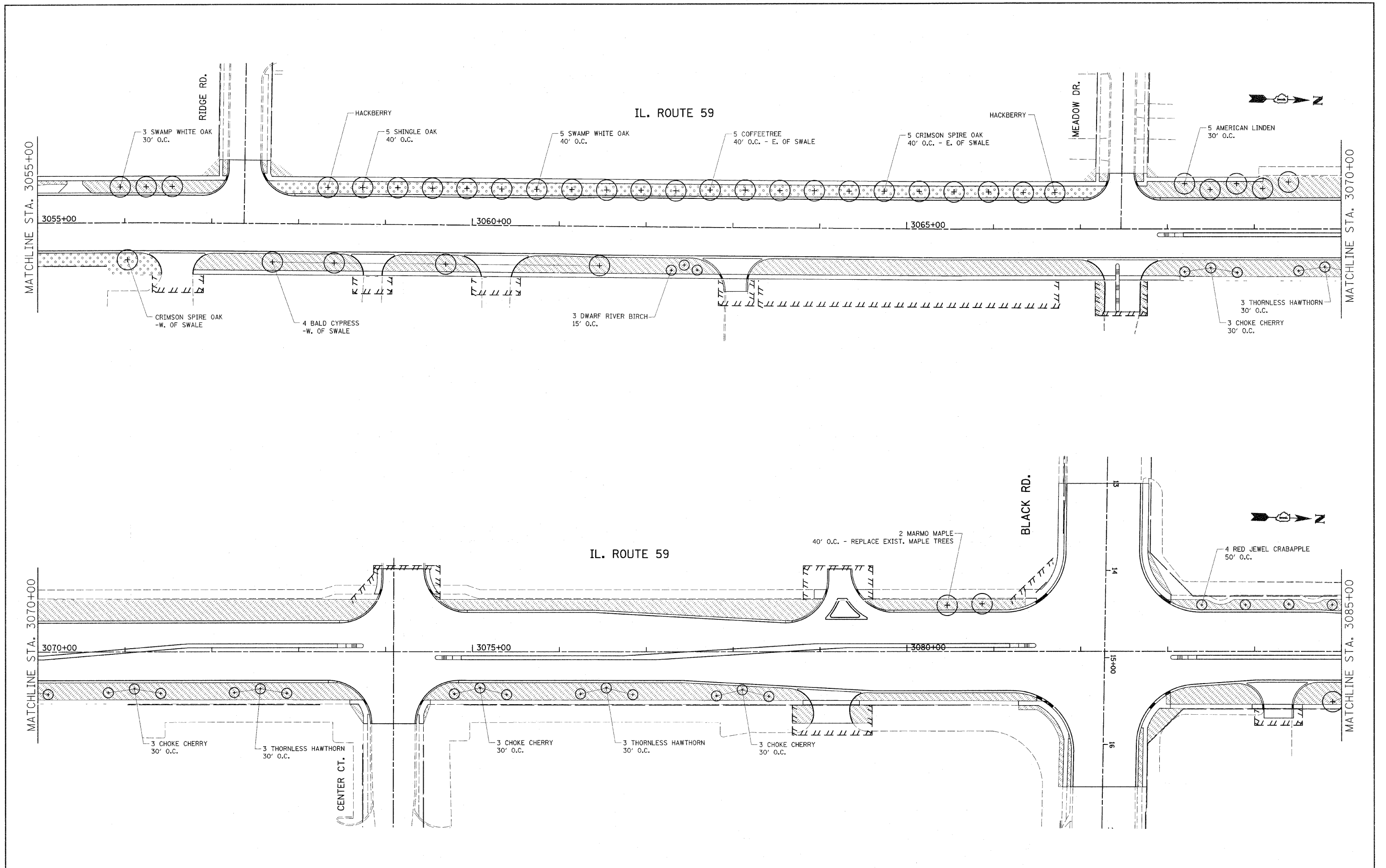


# CALENDAR OF CONSTRUCTION AND ESTABLISHMENT WORK

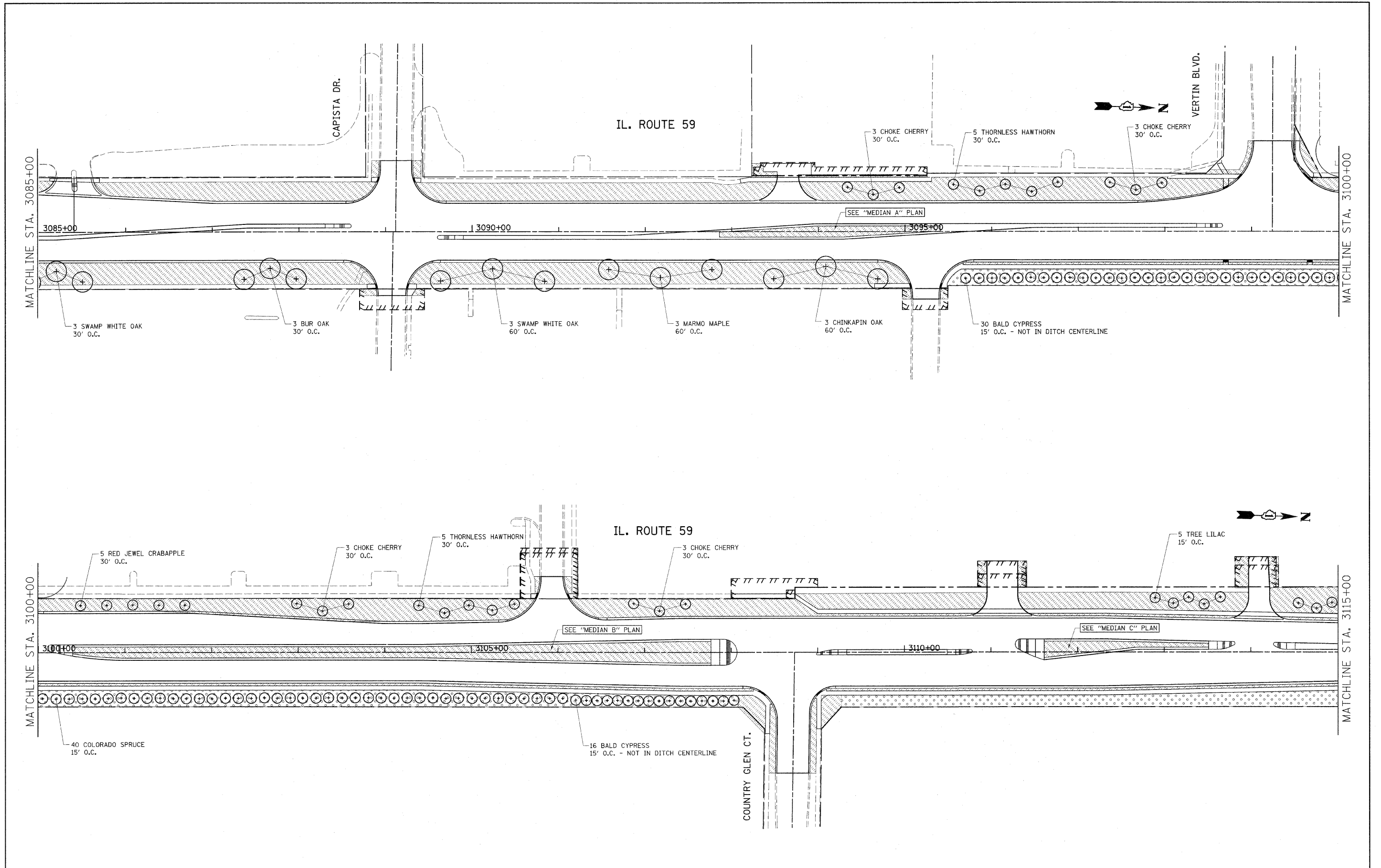
Item	2011												2012					2013						
	June	July	August	September	October	November	December	January	February	March	April	May	June	July	August	September	October	November	December	January	February	March	April	May
<b>Plant Material</b>																								
Submit completed plant inspection forms to IDOT by September 1st for fall planting.																								
<b>Vegetation Management</b>																								
Mowing Cycle (8 cycles)																								
Weed Control, Broadleaf in Turf																								
Mowing (Preparation for Native Grass Restoration)																								
Weed Control, Native Grass Restoration																								
<b>Tree / Shrub / Vine Planting</b>																								
Spring (ONLY) plantings of balled and burlapped & container stock: March 15 - May 15																								
Evergreens: August 15 - October 15; March 15 - April 30																								
REPLACEMENTS: Fall (ONLY) plantings of balled and burlapped: Oct 15 - Nov 30																								
REPLACEMENTS: March 15 - May 15																								
Pre-Emergent Granular Herbicide - prior to mulch for initial planting																								
<b>Perennial / Bulb Planting</b>																								
Preparation of Perennial Plant beds																								
Perennial Plants: August 15 - September 30; May 1 - June 15																								
Bulb Planting: October 15 - November 15																								
<b>Plant Care</b>																								
Perennial Plant Care (5 cycle)																								
Supplemental Watering																								



FILE NAME = c:\pwwork\pwwork\bauserd1\02240764\M115	USER NAME = bauserd1 1-sht-landscap.dgn	DESIGNED - DRAWN -	REVISED - REVISED -	<b>STATE OF ILLINOIS</b> <b>DEPARTMENT OF TRANSPORTATION</b>	<b>LANDSCAPING PLANS</b> <b>IL. RTE. 59 (I-55 TO IL. RTE. 126)</b>	F.A.P. RTE. 338	SECTION 114-LS-1	COUNTY WILL	TOTAL SHEETS 26	SHEET NO. 5
	PLOT SCALE = 50.0014 "/ IN.	CHECKED -	REVISED -			CONTRACT NO. 60M67				
	PLOT DATE = 2/9/2011	DATE -	REVISED -			ILLINOIS FED. AID PROJECT				
	SCALE: 1"=50'		SHEET NO. 1 OF 21 SHEETS			STA. 3032+25 TO STA. 3055+00				



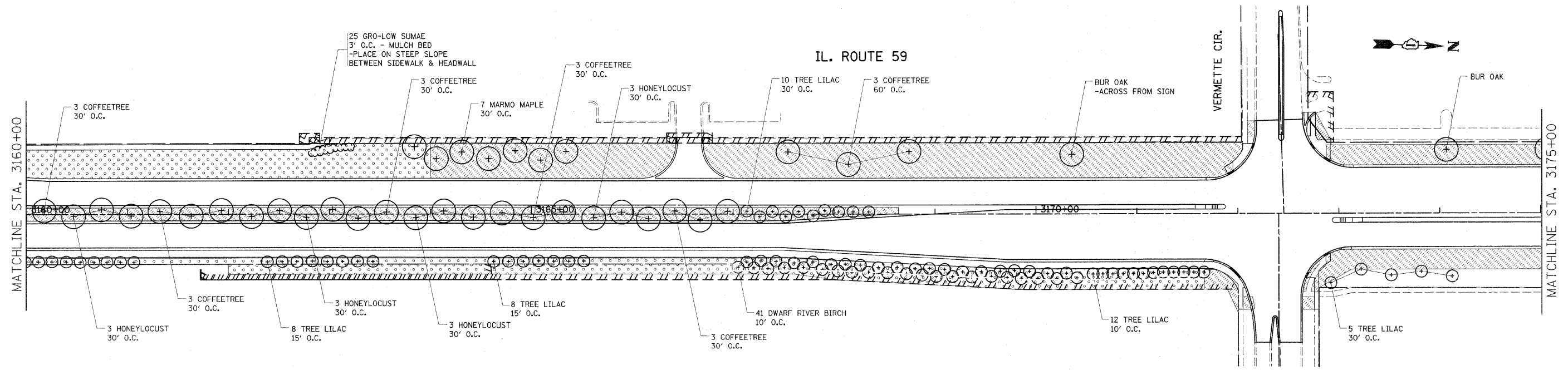
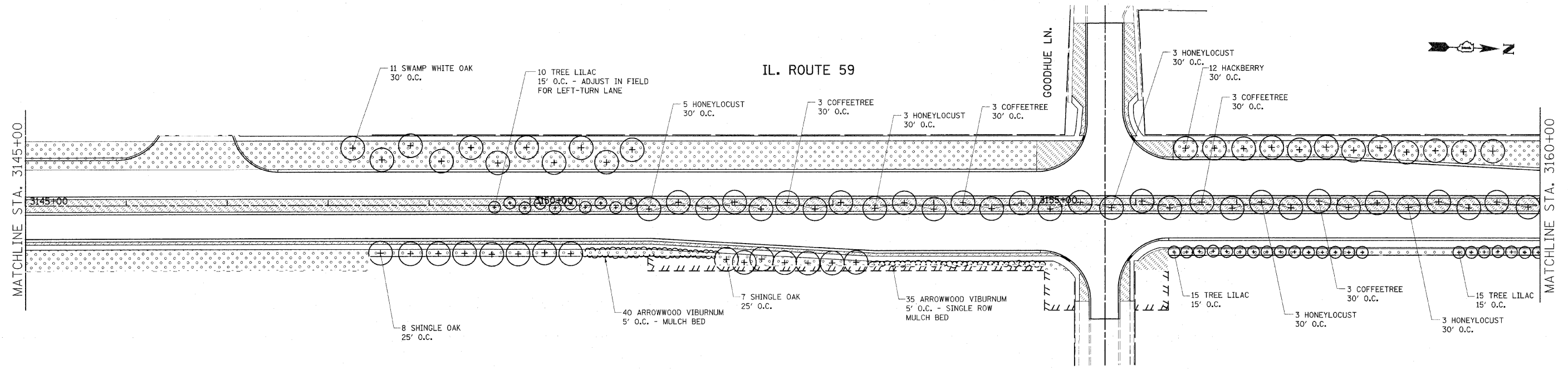
FILE NAME =	USER NAME = bauerdl	DESIGNED -	REVISED -	<b>STATE OF ILLINOIS DEPARTMENT OF TRANSPORTATION</b>	<b>LANDSCAPING PLANS IL. RTE. 59 (I-55 TO IL. RTE. 126)</b>			F.A.P. RTE.	SECTION	COUNTY	TOTAL SHEETS	SHEET NO.
at:\pwwork\pwwork\baueard\1\2248764\11511-sht-landscp.dgn	PLT SCALE = 5/8"=1'-0" IN.	DRAWN -	REVISED -		338	114-LS-1	WILL	26	6			
PLT DATE = 2/9/2011	DATE -	CHECKED -	REVISED -		SCALE: 1"=50'    SHEET NO. 2 OF 21 SHEETS    STA. 3055+00 TO STA. 3085+00			CONTRACT NO. 60M67				
		DATE -	REVISED -		ILLINOIS FED. AID PROJECT							



FILE NAME = c:\pwwork\pwwork\bauserd\1\2424764\M11511-sht-landscop.dgn	USER NAME = bauserd1	DESIGNED -	REVISED -	<b>STATE OF ILLINOIS</b> <b>DEPARTMENT OF TRANSPORTATION</b>	<b>LANDSCAPING PLANS</b> <b>IL. RTE. 59 (I-55 TO IL. RTE. 126)</b>		F.A.P. RTE.	SECTION	COUNTY	TOTAL SHEETS	SHEET NO.
	PLOT SCALE = 5/8"=1' / IN.	CHECKED -	REVISED -		338	114-LS-1	WILL	20	7		
	PLOT DATE = 2/18/2011	DATE -	REVISED -		SCALE: 1"=50'    SHEET NO. 3 OF 21 SHEETS    STA. 3085+00 TO STA. 3115+00		CONTRACT NO. 60M67		ILLINOIS FED. AID PROJECT		

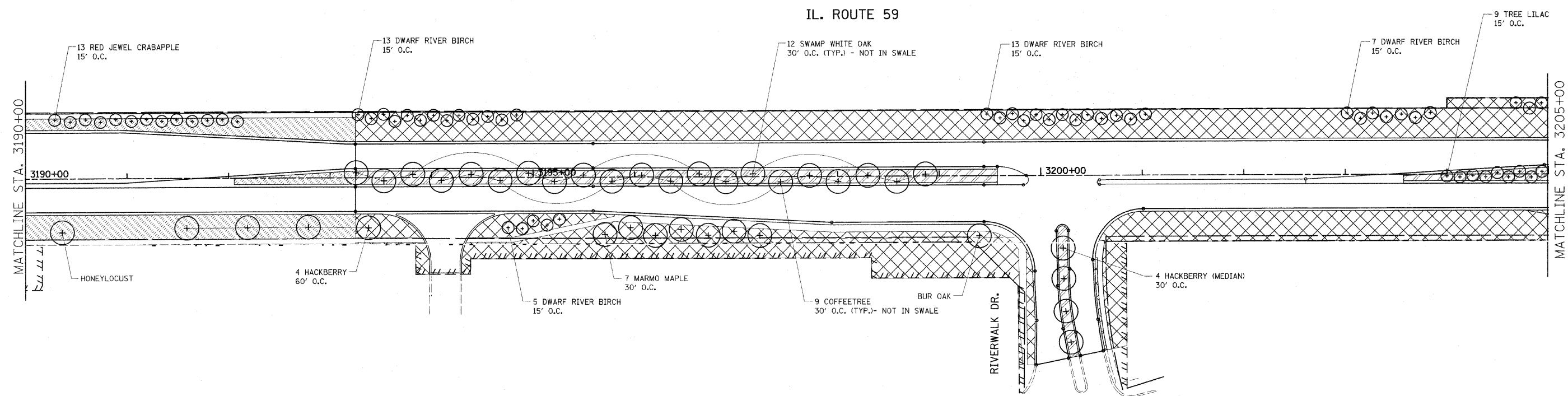
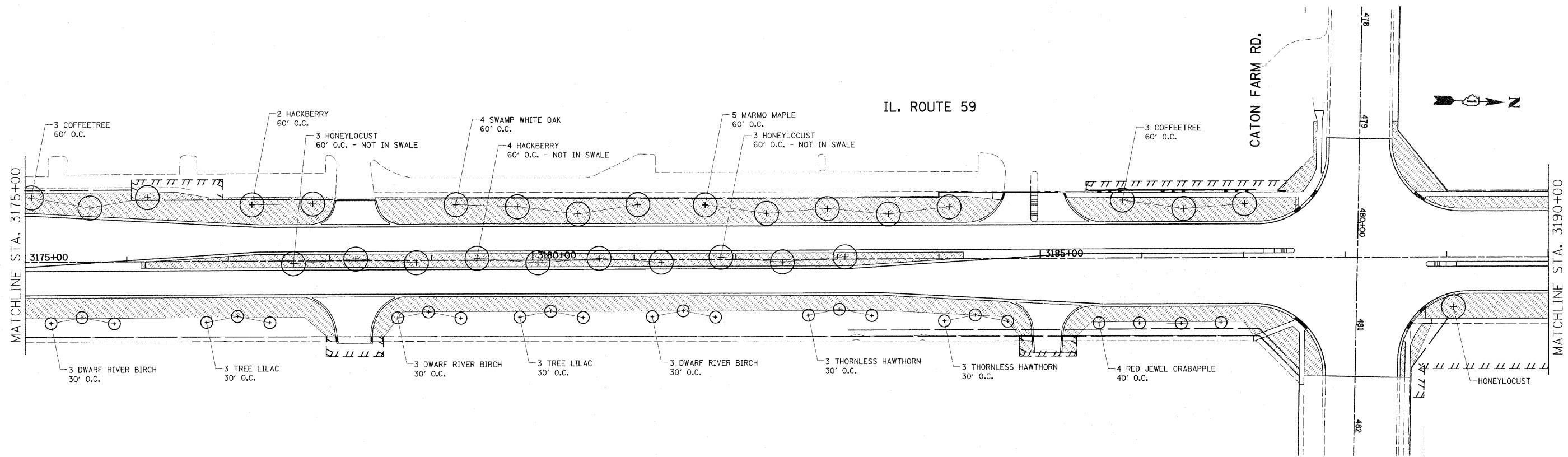






FILE NAME =	USER NAME = bauerdl	DESIGNED -	REVISED -	<b>STATE OF ILLINOIS DEPARTMENT OF TRANSPORTATION</b>	<b>LANDSCAPING PLANS IL. RTE. 59 (I-55 TO IL. RTE. 126)</b>			F.A.P. RTE.	SECTION	COUNTY	TOTAL SHEETS	SHEET NO.
c:\pwwork\pudot\baue-dl\22240764\111511-sht-landsep.dgn		DRAWN -	REVISED -		338	114-LS-1	WILL	28	9			
PLOT SCALE = 5/8, 20/14 "/> IN.		CHECKED -	REVISED -		CONTRACT NO. 60M67							
PLOT DATE = 2/9/2011		DATE -	REVISED -		ILLINOIS FED. AID PROJECT							

SCALE: 1"=50' SHEET NO. 5 OF 21 SHEETS STA. 3145+00 TO STA. 3175+00



FILE NAME =  
 c:\pwork\pwork\baurd1\0240764\115011-sht-landscap.dgn

USER NAME = baurd1  
 PLOT SCALE = 50.0014 "/ IN.  
 PLOT DATE = 2/9/2011

DESIGNED -  
 DRAWN -  
 CHECKED -  
 DATE -

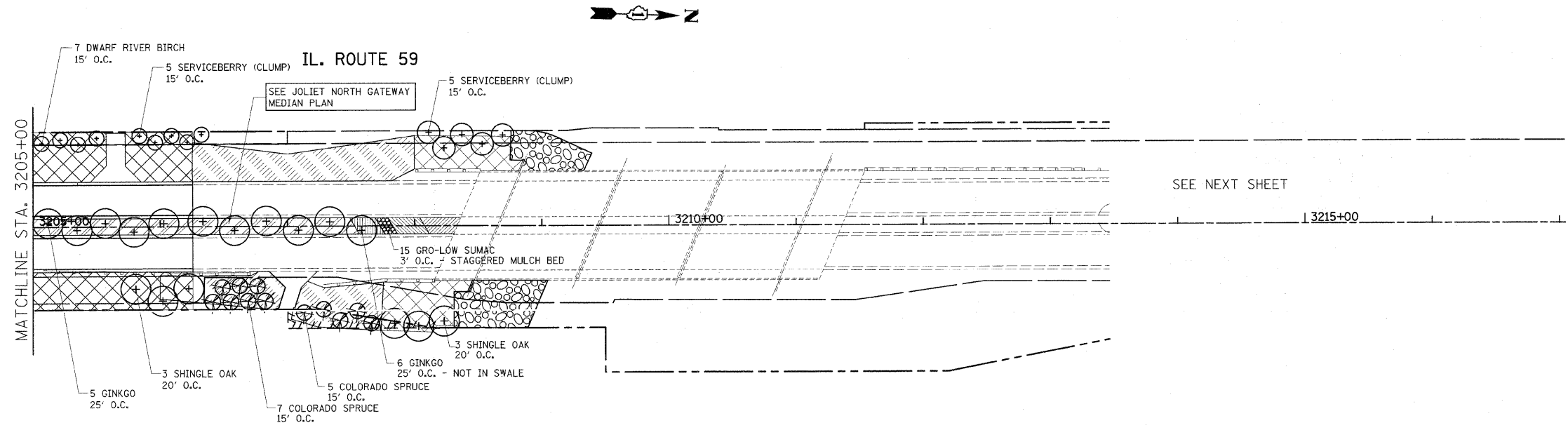
REVISED -  
 REVISED -  
 REVISED -  
 REVISED -

**STATE OF ILLINOIS  
 DEPARTMENT OF TRANSPORTATION**

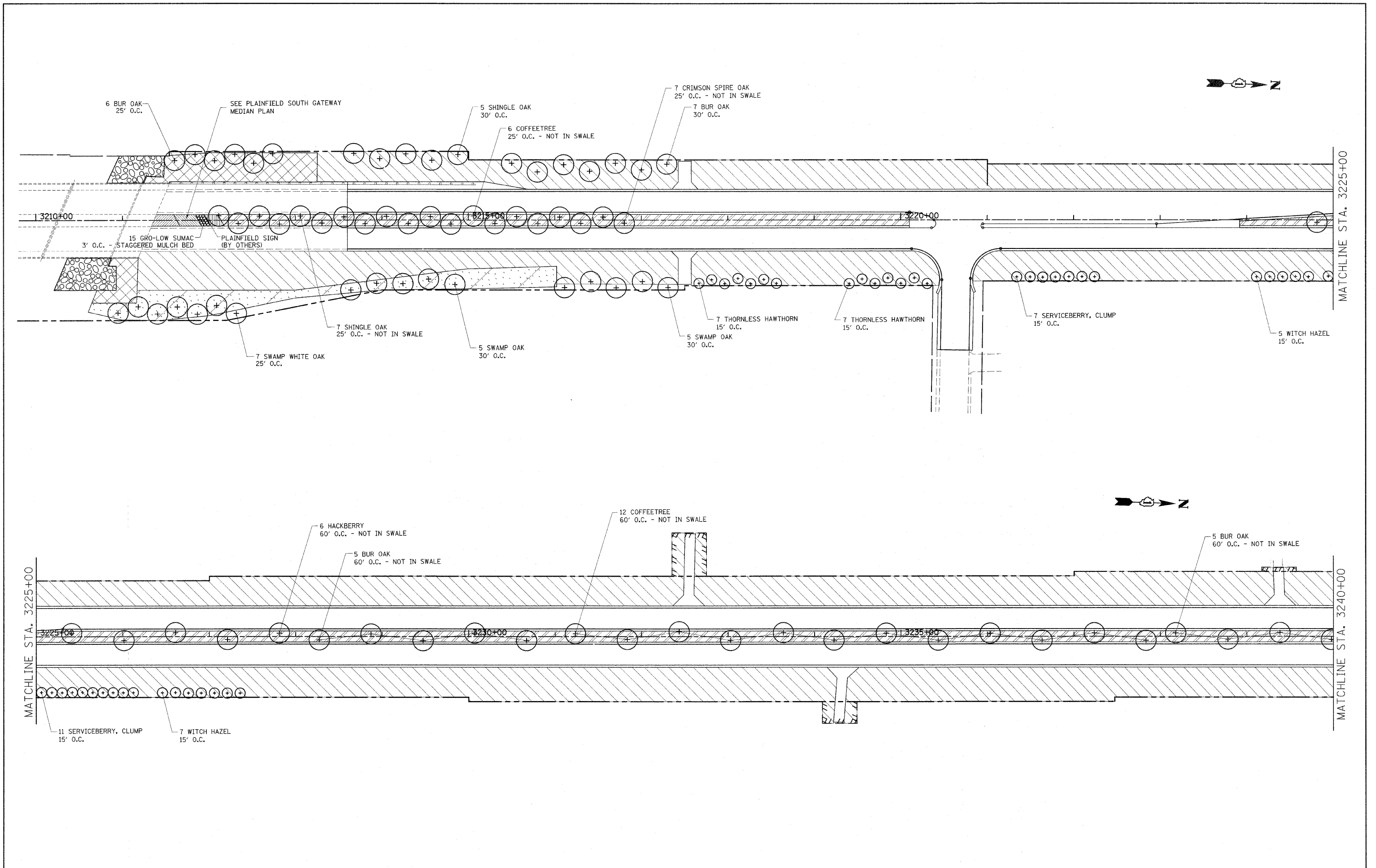
**LANDSCAPING PLANS  
 IL. RTE. 59 (I-55 TO IL. RTE. 126)**

SCALE: 1"=50' SHEET NO. 6 OF 21 SHEETS STA. 3175+00 TO STA. 3205+00

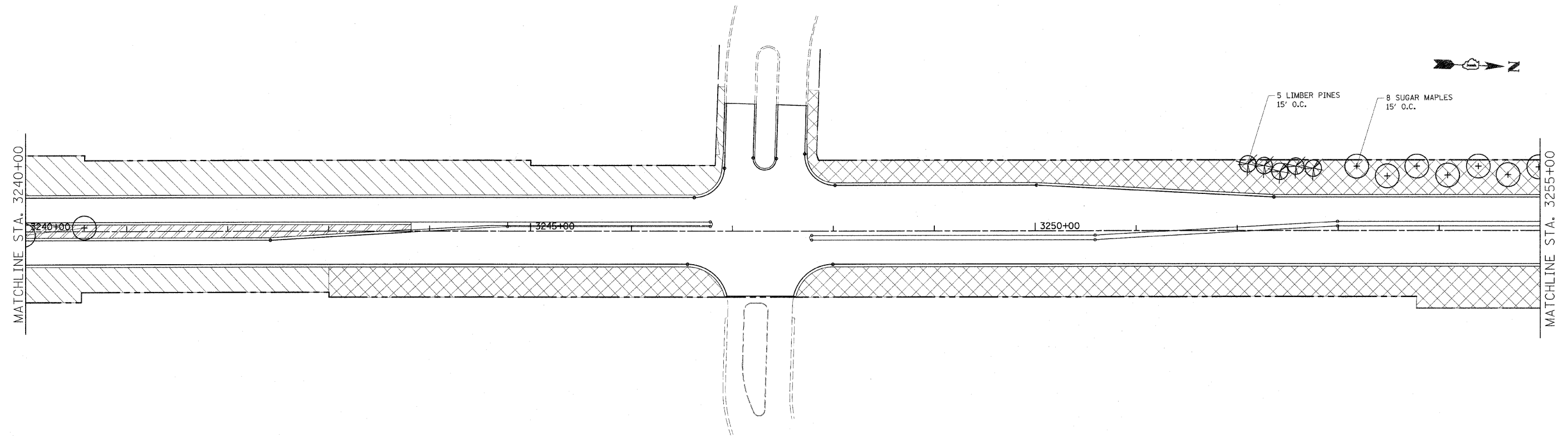
F.A.P. RTE.	SECTION	COUNTY	TOTAL SHEETS	SHEET NO.
338	114-LS-1	WILL	20	10
CONTRACT NO. 60M67				
ILLINOIS FED. AID PROJECT				



FILE NAME =	USER NAME = bauerdl	DESIGNED -	REVISED -	<b>STATE OF ILLINOIS DEPARTMENT OF TRANSPORTATION</b>	<b>LANDSCAPING PLANS IL. RTE. 59 (I-55 TO IL. RTE. 126)</b>	F.A.P. RTE.	SECTION	COUNTY	TOTAL SHEETS	SHEET NO.	
c:\pwwork\p1dot\bauerdl\0248764\MI15	1-shit-landsop.dgn	DRAWN -	REVISED -			338	114-LS-1	WILL	26	11	
	PLOT SCALE = 50.0014 "/ IN.	CHECKED -	REVISED -			CONTRACT NO. 60M67					
	PLOT DATE = 2/9/2011	DATE -	REVISED -			ILLINOIS FED. AID PROJECT					
				SCALE: 1"=50'		SHEET NO. 7 OF 21 SHEETS		STA. 3205+00 TO STA. 3210+00			

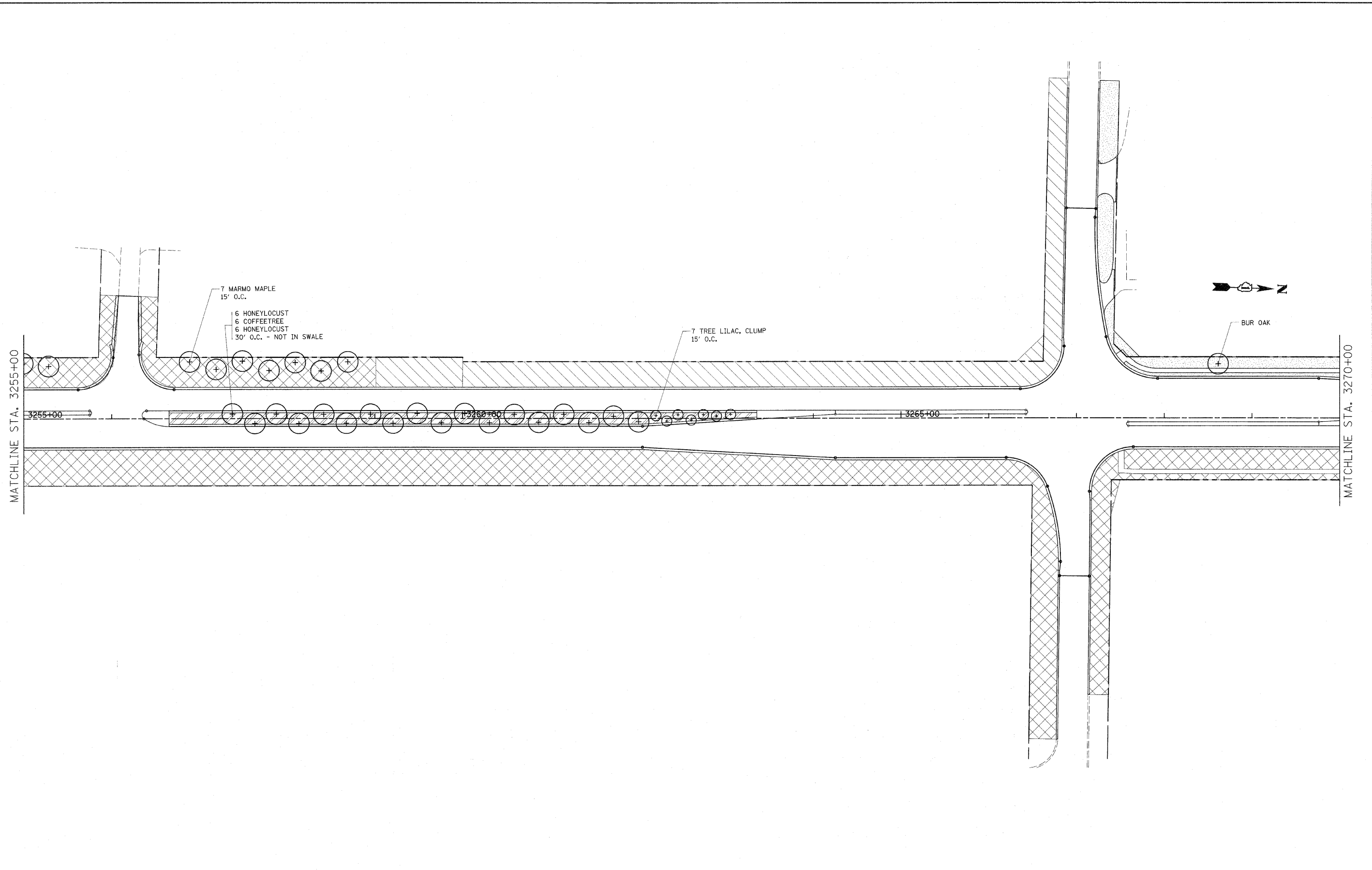


FILE NAME =	USER NAME = bauerdl	DESIGNED -	REVISED -	<b>STATE OF ILLINOIS DEPARTMENT OF TRANSPORTATION</b>	<b>LANDSCAPING PLANS IL. RTE. 59 (I-55 TO IL. RTE. 126)</b>			F.A.P. RTE.	SECTION	COUNTY	TOTAL SHEETS	SHEET NO.
c:\pwwork\pwwork\baue-d\2248764\111511-sht-landscop.dgn	PLOT SCALE = 5/8"=1'-0" IN.	DRAWN -	REVISED -		338	114-LS-1	WILL	26	12			
PLOT DATE = 2/9/2011	DATE -	CHECKED -	REVISED -		SCALE: 1"=50'			SHEET NO. 8 OF 21 SHEETS STA. 3210+00 TO STA. 3240+00			CONTRACT NO. 60M67	
		DATE -	REVISED -		ILLINOIS FED. AID PROJECT							

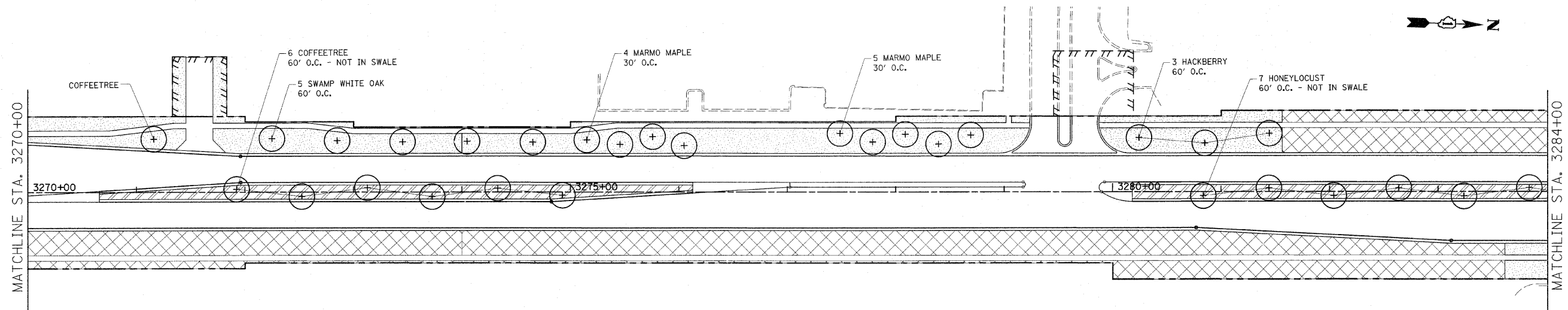


FILE NAME = c:\pwwork\pwwork\bauserd\2240764\M11511-sht-landscp.dgn	USER NAME = bauserd1	DESIGNED -	REVISED -	<b>STATE OF ILLINOIS DEPARTMENT OF TRANSPORTATION</b>	<b>LANDSCAPING PLANS IL. RTE. 59 (I-55 TO IL. RTE. 126)</b>	F.A.P. RTE.	SECTION	COUNTY	TOTAL SHEETS	SHEET NO.
PLOT SCALE = 50.00014 ' / IN.	CHECKED -	REVISED -	338			114-LS-1	WILL	28	13	
PLOT DATE = 2/9/2011	DATE -	REVISED -	CONTRACT NO. 60M67							
ILLINOIS FED. AID PROJECT										

SCALE: 1"=50' SHEET NO. 9 OF 21 SHEETS STA. 3240+00 TO STA. 3255+00



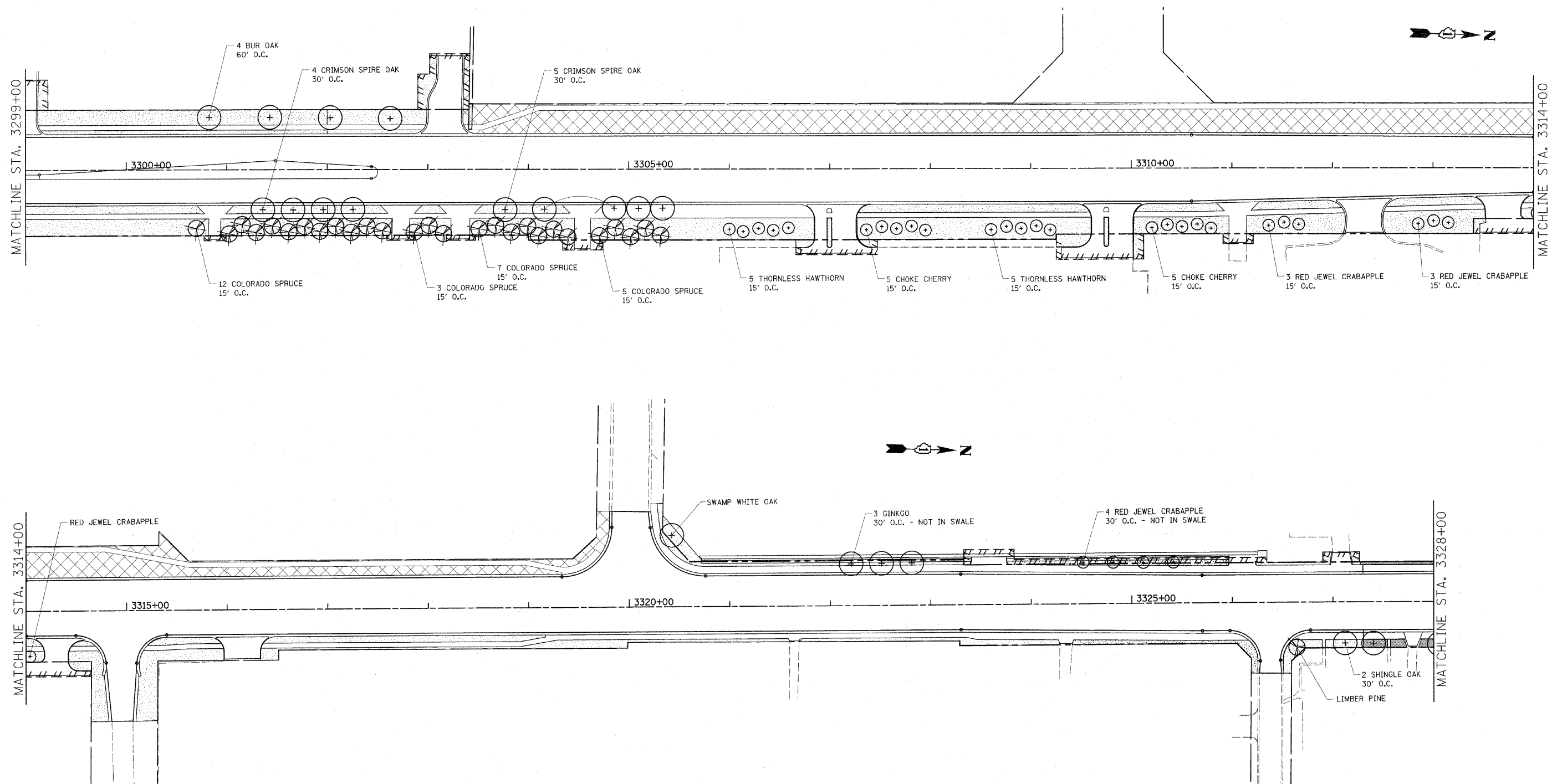
FILE NAME = c:\pwork\pwork\baerd1\d2248764\MI15	USER NAME = baerd1	DESIGNED -	REVISED -	<b>STATE OF ILLINOIS</b> <b>DEPARTMENT OF TRANSPORTATION</b>	<b>LANDSCAPING PLANS</b> <b>IL. RTE. 59 (I-55 TO IL. RTE. 126)</b>			F.A.P. RTE.	SECTION	COUNTY	TOTAL SHEETS	SHEET NO.
	1-sht-landscop.dgn	DRAWN -	REVISED -		338	114-LS-1	WILL	20	14			
	PLOT SCALE = 50.0014' / IN.	CHECKED -	REVISED -		CONTRACT NO. 60M67							
	PLOT DATE = 2/9/2011	DATE -	REVISED -		ILLINOIS FED. AID PROJECT							
				SCALE: 1"=50'		SHEET NO. 10 OF 21 SHEETS		STA. 3255+00 TO STA. 3270+00				



FILE NAME =	USER NAME = bauer-d1	DESIGNED -	REVISED -	<b>STATE OF ILLINOIS DEPARTMENT OF TRANSPORTATION</b>	<b>LANDSCAPING PLANS IL. RTE. 59 (I-55 TO IL. RTE. 126)</b>			F.A.P. RTE.	SECTION	COUNTY	TOTAL SHEETS	SHEET NO.
ct:\pwork\p\dot\bauer\d1\8240764\M115	1-shit-landscap.dgn	DRAWN -	REVISED -		338	114-LS-1	WILL	20	15			
	PLDT SCALE = 50.0014 "/ IN.	CHECKED -	REVISED -		CONTRACT NO. 60M67			ILLINOIS FED. AID PROJECT				
	PLDT DATE = 2/9/2011	DATE -	REVISED -		SCALE: 1"=50'	SHEET NO. 11 OF 21 SHEETS	STA. 3270+00 TO STA. 3284+00					







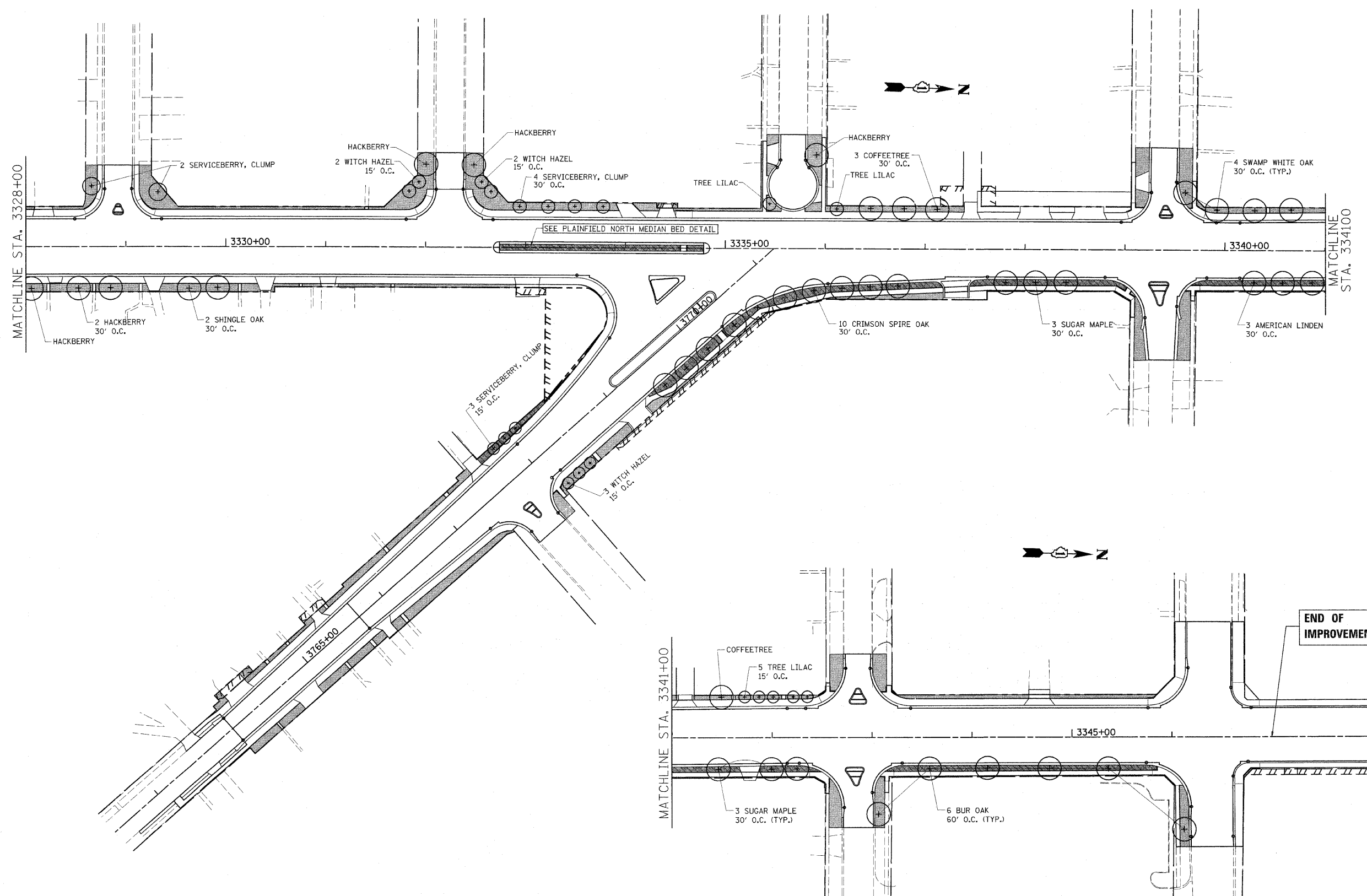
FILE NAME =	USER NAME = bauerdl	DESIGNED -	REVISED -
c:\pwork\pilot\bauderdl\0240764\MI15011-shr-landsep.dgn		DRAWN -	REVISED -
	PLOT SCALE = 50.0014 "/ IN.	CHECKED -	REVISED -
	PLOT DATE = 2/9/2011	DATE -	REVISED -

**STATE OF ILLINOIS  
DEPARTMENT OF TRANSPORTATION**

**LANDSCAPING PLANS  
IL. RTE. 59 (I-55 TO IL. RTE. 126)**

SCALE: 1"=50'    SHEET NO. 13 OF 21 SHEETS    STA. 3299+00 TO STA. 3328+00

F.A.P. RTE.	SECTION	COUNTY	TOTAL SHEETS	SHEET NO.
338	114-LS-1	WILL	28	17
CONTRACT NO. 60M67				
ILLINOIS FED. AID PROJECT				



FILE NAME =	USER NAME = bauer-dl	DESIGNED -	REVISED -	<b>STATE OF ILLINOIS DEPARTMENT OF TRANSPORTATION</b>	<b>LANDSCAPING PLANS IL. RTE. 59 (I-55 TO IL. RTE. 126)</b>		F.A.P. RTE.	SECTION	COUNTY	TOTAL SHEETS	SHEET NO.	
c:\pwork\pwork\baud-dl\0240764\MI15	1-sht-landscop.dgn	DRAWN -	REVISED -		338	114-LS-1	WILL	20	18			
	PLUT SCALE = 50.0000' / IN.	CHECKED -	REVISED -		SCALE: 1"=50'		SHEET NO. 14 OF 21 SHEETS		STA. 3328+00 TO STA. 3347+00		CONTRACT NO. 60M67	
	PLUT DATE = 2/9/2011	DATE -	REVISED -		ILLINOIS FED. AID PROJECT							

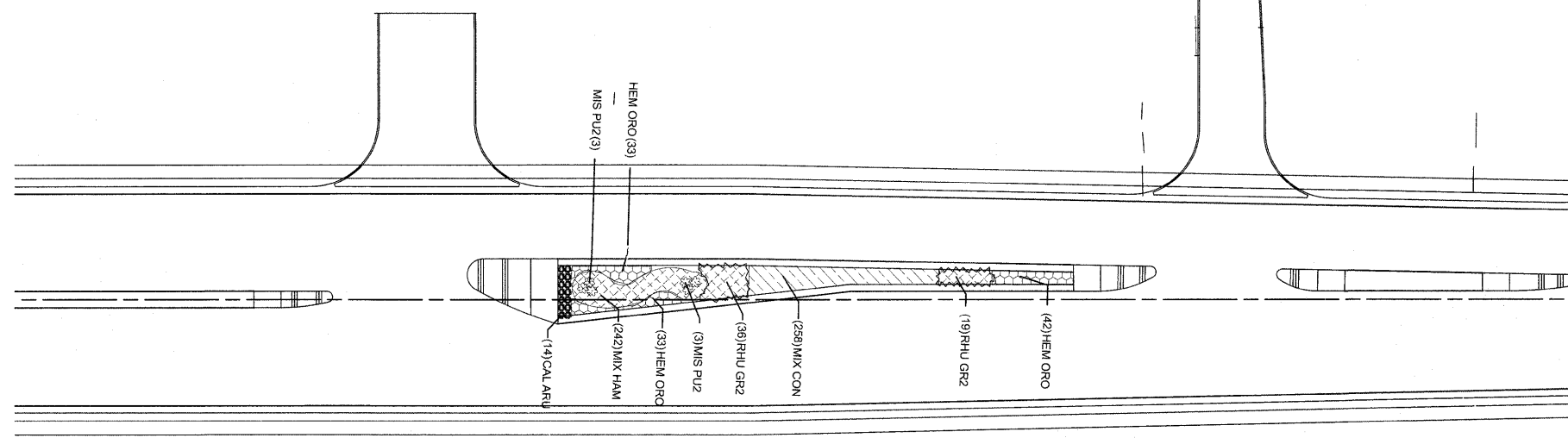


BRAKUR  
CABINETS



COMMERCIAL

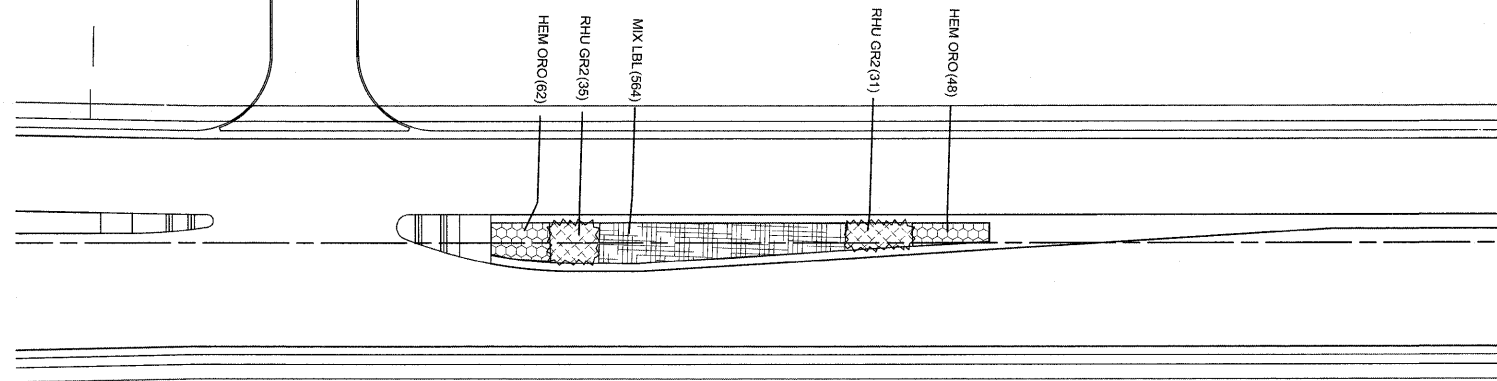
COMMERCIAL



RESIDENTIAL

IL. ROUTE 59 MEDIAN C

COMMERCIAL



RESIDENTIAL

IL. ROUTE 59 MEDIAN D

FILE NAME =	USER NAME = bauerdl	DESIGNED -	REVISED -	<b>STATE OF ILLINOIS DEPARTMENT OF TRANSPORTATION</b>	<b>MEDIAN LANDSCAPE PLAN IL. ROUTE 59 (BLACK RD - THEODORE ST)</b>			F.A.P. RTE.	SECTION	COUNTY	TOTAL SHEETS	SHEET NO.
ct:\pwork\pwork\bauderdl\0240764\MI15	1-shr-landsop.dgn	DRAWN -	REVISED -		338	114-LS-1	WILL	20	20			
	PLOT SCALE = 30.0000' / IN.	CHECKED -	REVISED -		CONTRACT NO. 60M67			ILLINOIS FED. AID PROJECT				
	PLOT DATE = 2/9/2011	DATE -	REVISED -		SCALE: 1"=30'	SHEET NO. 16 OF 21 SHEETS	STA.	TO STA.				

PLANT SCHEDULE IL. RTE. 59 MEDIAN A

FLOWERING TREES	QTY	BOTANICAL NAME	COMMON NAME	SIZE
MAL RE2	3	Malus x 'Red Jewel'	Red Jewel Crab Apple	2" dbh, BB
SHRUB AREAS	QTY	BOTANICAL NAME	COMMON NAME	SIZE
RHU GR2	50	Rhus aromatica 'Gro-Low'	Gro-Low Fragrant Sumac	3 gal@ 30" oc
GRNDCOVER/PERENNIALS	QTY	BOTANICAL NAME	COMMON NAME	SIZE
HEM ORO	131	Hemerocallis hybrid 'Stella de Oro'	Stella de Oro Daylily	1 gal@ 24" oc
MIX CON	470	Mix grass-perennial 'Coneflwr-LBstem Mix' Echinacea purpurea 'Magnus' (70%), Schizachyrium scoparium 'The Blues' (30%); Plant cone flwrs in drifts.	Purple Coneflwr-LBstem Mix	1 gal@ 18" oc
MIX HAM	345	Mix grass-perennial 'Dwrf Hamelin Grass-Daffodills-Onio' Pennisetum alopecuroides 'Li Bunny' (30%), Yellow Daffodils-King Alfred (40%), Allium t. 'Summer Beauty' (30%); Plant bulbs in drifts.	Dwrf Hamelin Grass-Bulb Mix	1 gal@ 18" oc

PLANT SCHEDULE IL. RTE. 59 MEDIAN B

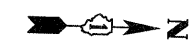
FLOWERING TREES	QTY	BOTANICAL NAME	COMMON NAME	SIZE
CRA VAR	9	Crataegus crusgalli var. inermis TM	Thornless Cockspur Hawthorn	6' Ht, BB
QUE CR2	2	Quercus robur x alba 'Crimson Spire'	Crimson Spire Oak	2.5" dbh, BB
ANNUALS/PERENNIALS	QTY	BOTANICAL NAME	COMMON NAME	SIZE
AST PUR	89	Aster novae-angliae 'Purple Dome'	Purple Dome New England Aster	1 gal
GRASSES	QTY	BOTANICAL NAME	COMMON NAME	SIZE
CAL ARU	39	Calamagrostis arundinacea 'Karl Foerster'	Foerster's Feather Grass	1 gal
PER SPI	23	Perovskia atriplicifolia 'Blue Spires'	Russian Sage	1 gal
SHRUB AREAS	QTY	BOTANICAL NAME	COMMON NAME	SIZE
RHU GR2	144	Rhus aromatica 'Gro-Low'	Gro-Low Fragrant Sumac	3 gal@ 30" oc
GRASS AREAS	QTY	BOTANICAL NAME	COMMON NAME	SIZE
PAN ROT	138	Panicum virgatum 'Rotstrahlbusch'	Rotstrahlbusch Switch Grass	1 gal@ 24" oc
GRNDCOVER/PERENNIALS	QTY	BOTANICAL NAME	COMMON NAME	SIZE
ACH MOO	362	Achillea x 'Moonshine'	Moonshine Yarrow	1 gal@ 18" oc
BAP TWI	234	Baptisia x varicolor 'Twilite'	Twilite Prairieblues False Indigo	1 gal@ 18" oc
ECH MAG	444	Echinacea purpurea 'Magnus'	Magnus Purple Coneflower	1 gal@ 12" oc
MIX HAM	433	Mix grass-perennial 'Dwrf Hamelin Grass-Daffodills-Onio' Pennisetum alopecuroides 'Li Bunny' (30%), Yellow Daffodils-King Alfred (40%), Allium t. 'Summer Beauty' (30%); Plant bulbs in drifts.	Dwrf Hamelin Grass-Bulb Mix	1 gal@ 18" oc
MIX ALL	342	Mix Spor-Allium Sporobolus heterolepis 'Tara' (40%), Allium tanguticum 'Summer Beauty' (60%); Plant perennials in naturalized clumps.	Prairie Dropseed-Summer Beauty Allium	1 gal@ 18" oc
NEP WAL	184	Nepeta x faassenii 'Walkers Low'	Walkers Low Catmint	1 gal@ 24" oc
RUD FUL	312	Rudbeckia fulgida 'Goldsturm'	Goldsturm Black-eyed Susan	1 gal@ 24" oc

PLANT SCHEDULE IL. RTE. 59 MEDIAN C


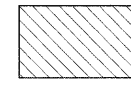
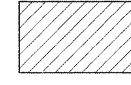
GRASSES	QTY	BOTANICAL NAME	COMMON NAME	SIZE
CAL ARU	14	Calamagrostis arundinacea 'Karl Foerster'	Foerster's Feather Grass	1 gal
MIS PU2	6	Panicum Virgatum 'Rostrahlbusch'	Red Switch	1 gal
SHRUB AREAS	QTY	BOTANICAL NAME	COMMON NAME	SIZE
RHU GR2	55	Rhus aromatica 'Gro-Low'	Gro-Low Fragrant Sumac	3 gal@ 30" oc
GRNDCOVER/PERENNIALS	QTY	BOTANICAL NAME	COMMON NAME	SIZE
HEM ORO	108	Hemerocallis hybrid 'Stella de Oro'	Stella de Oro Daylily	1 gal@ 24" oc
MIX CON	258	Mix grass-perennial 'Coneflwr-LBstem Mix' Echinacea purpurea 'Magnus' (70%), Schizachyrium scoparium 'The Blues' (30%); Plant cone flwrs in drifts.	Purple Coneflwr-LBstem Mix	1 gal@ 18" oc
MIX HAM	242	Mix grass-perennial 'Dwrf Hamelin Grass-Daffodills-Onio' Pennisetum alopecuroides 'Li Bunny' (30%), Yellow Daffodils-King Alfred (40%), Allium t. 'Summer Beauty' (30%); Plant bulbs in drifts.	Dwrf Hamelin Grass-Bulb Mix	1 gal@ 18" oc

PLANT SCHEDULE IL. RTE. 59 MEDIAN D

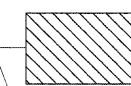
SHRUB AREAS	QTY	BOTANICAL NAME	COMMON NAME	SIZE
RHU GR2	66	Rhus aromatica 'Gro-Low'	Gro-Low Fragrant Sumac	3 gal@ 30" oc
GRNDCOVER/PERENNIALS	QTY	BOTANICAL NAME	COMMON NAME	SIZE
HEM ORO	110	Hemerocallis hybrid 'Stella de Oro'	Stella de Oro Daylily	1 gal@ 24" oc
MIX LBL	564	Mix grass-perennial 'LBStem-Calamantha-Allium' Schizachyrium scoparium 'The Blues' (25%), Calamintha nepeta 'Montrose White' (25%), Allium tanguticum 'Summer Beauty' (50%)	LBStem-Calamint-Onion Mix	1 gal@ 16" oc



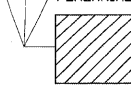
**JOLIET**  
**SOUTH GATEWAY MEDIAN BED - STA. 3123+00 TO STA. 3123+80 (115 SQ. YDS.)**  
 PERENNIAL PLANTS, ORNAMENTAL TYPE, GALLON POT - 9.20 UNITS

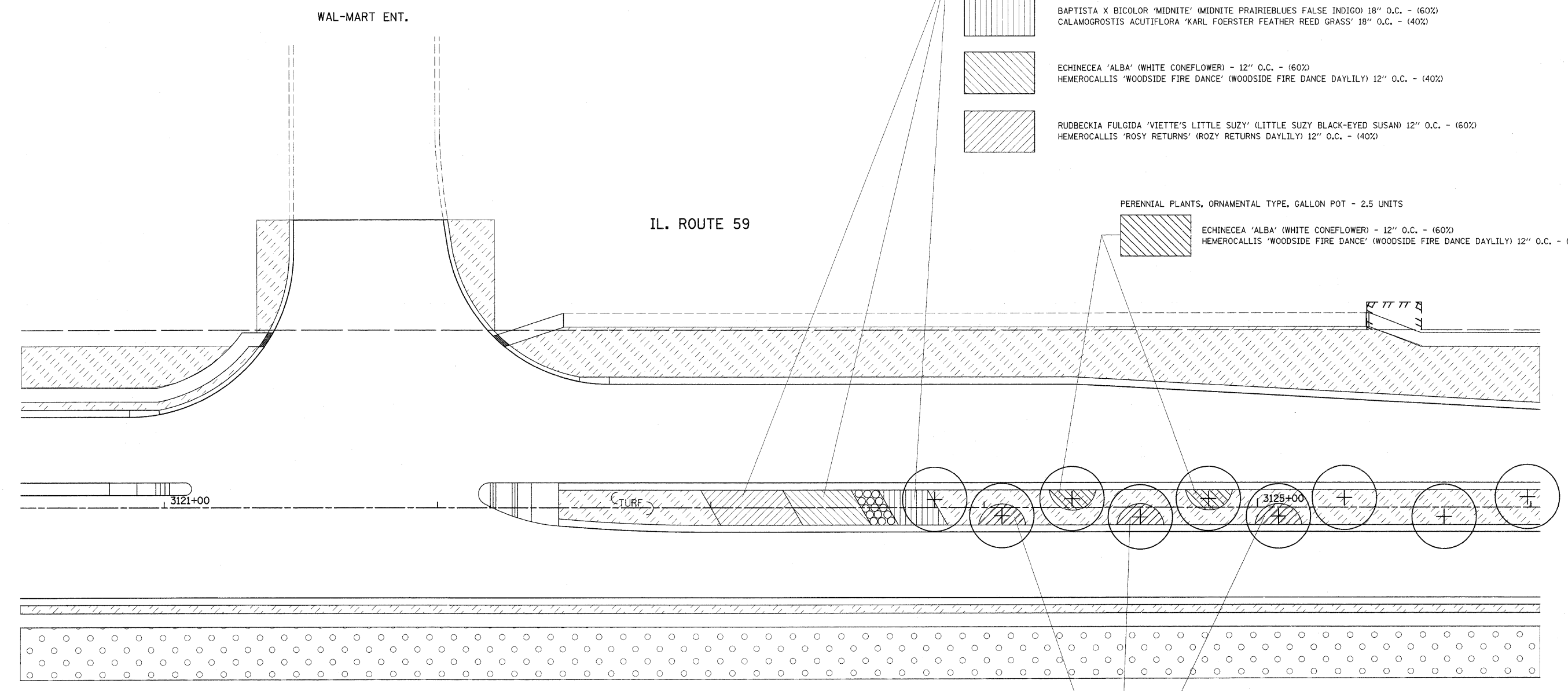
-  BAPTISTA X BICOLOR 'MIDNITE' (MIDNITE PRAIRIEBLUES FALSE INDIGO) 18" O.C. - (60%)  
 CALAMOGROSTIS ACUTIFLORA 'KARL FOERSTER FEATHER REED GRASS' 18" O.C. - (40%)
-  ECHINECEA 'ALBA' (WHITE CONEFLOWER) - 12" O.C. - (60%)  
 HEMEROCALLIS 'WOODSIDE FIRE DANCE' (WOODSIDE FIRE DANCE DAYLILY) 12" O.C. - (40%)
-  RUDBECKIA FULGIDA 'VIETTE'S LITTLE SUZY' (LITTLE SUZY BLACK-EYED SUSAN) 12" O.C. - (60%)  
 HEMEROCALLIS 'ROSY RETURNS' (ROZY RETURNS DAYLILY) 12" O.C. - (40%)

PERENNIAL PLANTS, ORNAMENTAL TYPE, GALLON POT - 2.5 UNITS

-  ECHINECEA 'ALBA' (WHITE CONEFLOWER) - 12" O.C. - (60%)  
 HEMEROCALLIS 'WOODSIDE FIRE DANCE' (WOODSIDE FIRE DANCE DAYLILY) 12" O.C. - (40%)

PERENNIAL PLANTS, ORNAMENTAL TYPE, GALLON POT - 3.75 UNITS

-  RUDBECKIA FULGIDA 'VIETTE'S LITTLE SUZY' (LITTLE SUZY BLACK-EYED SUSAN) 12" O.C. - (60%)  
 HEMEROCALLIS 'ROSY RETURNS' (ROZY RETURNS DAYLILY) 12" O.C. - (40%)



FILE NAME =	USER NAME = bauerdl	DESIGNED -	REVISED -	<b>STATE OF ILLINOIS DEPARTMENT OF TRANSPORTATION</b>	<b>JOLIET SOUTH GATEWAY MEDIAN LANDSCAPE DETAIL IL. ROUTE 59 (I-55 TO IL RTE. 126)</b>	F.A.P. RTE.	SECTION	COUNTY	TOTAL SHEETS	SHEET NO.	
ct:\pe_work\pwwork\baerd\0240764\M115311-sh-t-landsop.dgn	PLOT SCALE = 20.0006" / IN.	DRAWN -	REVISED -			338	114-LS-1	WILL	20	22	
PLOT DATE = 2/9/2011	DATE -	CHECKED -	REVISED -			CONTRACT NO. 60M67					
		DATE -	REVISED -			ILLINOIS FED. AID PROJECT					
					SCALE: 1"=20'	SHEET NO. 18 OF 21 SHEETS		STA. 3222+45 TO STA. 3126+00			

JOLIET  
NORTH GATEWAY MEDIAN BED - STA. 3207+55 TO STA. 3208+34 (115 SQ. YDS.)



PERENNIAL PLANTS, ORNAMENTAL TYPE, GALLON POT - 3.75 UNITS



RUDBECKIA FULGIDA 'VIETTE'S LITTLE SUZY' (LITTLE SUZY BLACK-EYED SUSAN) 12" O.C. - (60%)  
HEMEROCALLIS 'ROSY RETURNS' (ROZY RETURNS DAYLILY) 12" O.C. - (40%)

PERENNIAL PLANTS, ORNAMENTAL TYPE, GALLON POT - 9.20 UNITS



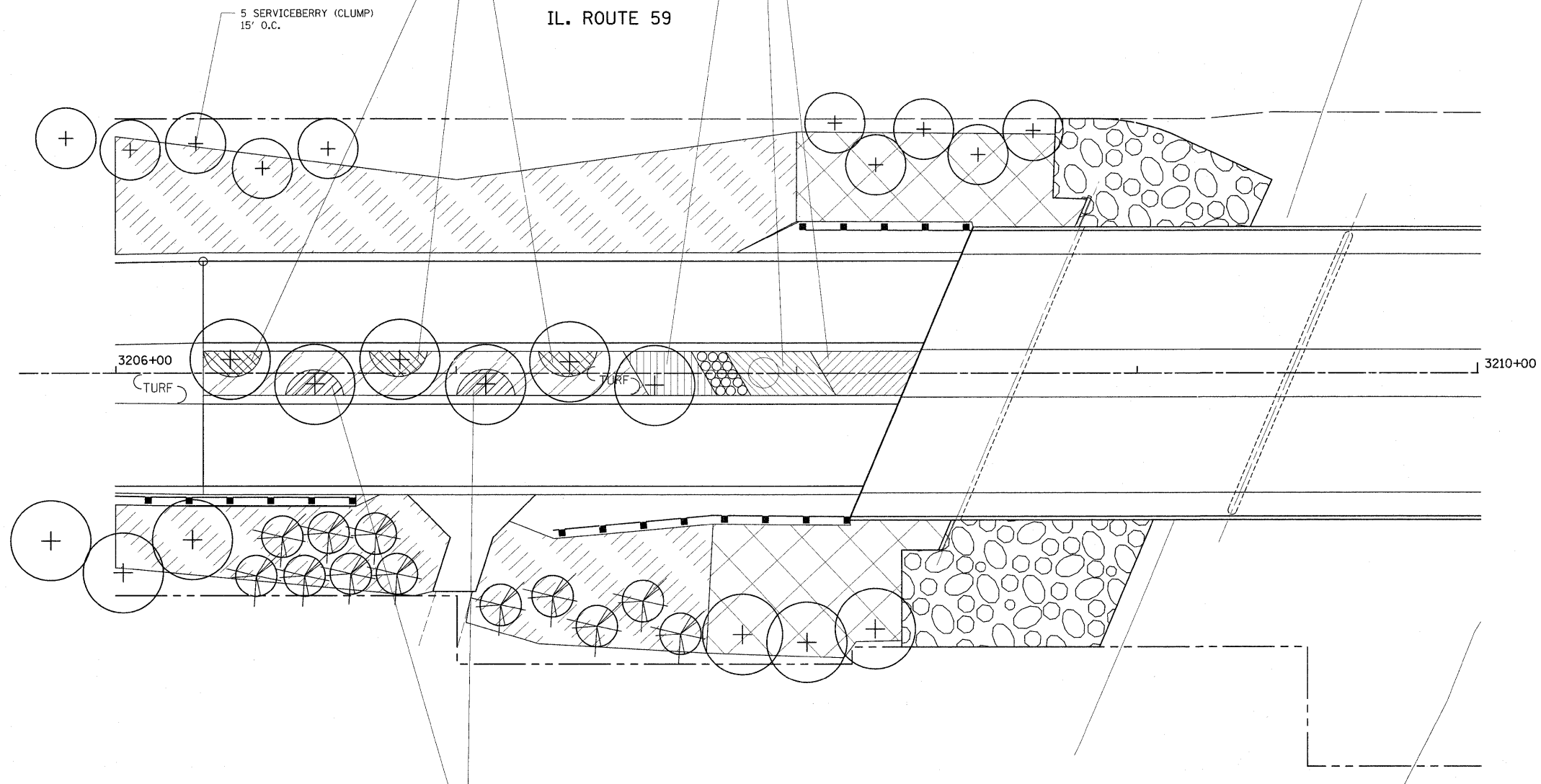
BAPTISTA X BICOLOR 'MIDNITE' (MIDNITE PRAIRIEBLUES FALSE INDIGO) 18" O.C. - (60%)  
CALAMOGROSTIS ACUTIFLORA 'KARL FOERSTER FEATHER REED GRASS' 18" O.C. - (40%)



ECHINECEA 'ALBA' (WHITE CONEFLOWER) - 12" O.C. - (60%)  
HEMEROCALLIS 'WOODSIDE FIRE DANCE' (WOODSIDE FIRE DANCE DAYLILY) 12" O.C. - (40%)



RUDBECKIA FULGIDA 'VIETTE'S LITTLE SUZY' (LITTLE SUZY BLACK-EYED SUSAN) 12" O.C. - (60%)  
HEMEROCALLIS 'ROSY RETURNS' (ROZY RETURNS DAYLILY) 12" O.C. - (40%)



PERENNIAL PLANTS, ORNAMENTAL TYPE, GALLON POT - 2.5 UNITS



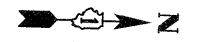
ECHINECEA 'ALBA' (WHITE CONEFLOWER) - 12" O.C. - (60%)  
HEMEROCALLIS 'WOODSIDE FIRE DANCE' (WOODSIDE FIRE DANCE DAYLILY) 12" O.C. - (40%)

FILE NAME =	USER NAME = bauerdl	DESIGNED -	REVISED -	<b>STATE OF ILLINOIS DEPARTMENT OF TRANSPORTATION</b>	<b>JOLIET NORTH GATEWAY MEDIAN LANDSCAPE DETAIL IL. ROUTE 59 (I-55 TO IL RTE. 126)</b>		F.A.P. RTE.	SECTION	COUNTY	TOTAL SHEETS	SHEET NO.	
c:\pw_work\pwwork\baue\dl\0240764\M1151	1-shr-landscp.dgn	DRAWN -	REVISED -				338	114-LS-1	WILL	20	23	
	PLOT SCALE = 20.0006' / IN.	CHECKED -	REVISED -		SCALE: 1"=20'		SHEET NO. 19 OF 21 SHEETS		STA. 3206+00 TO STA. 3208+34		CONTRACT NO. 60M67	
	PLOT DATE = 2/9/2011	DATE -	REVISED -		ILLINOIS FED. AID PROJECT							



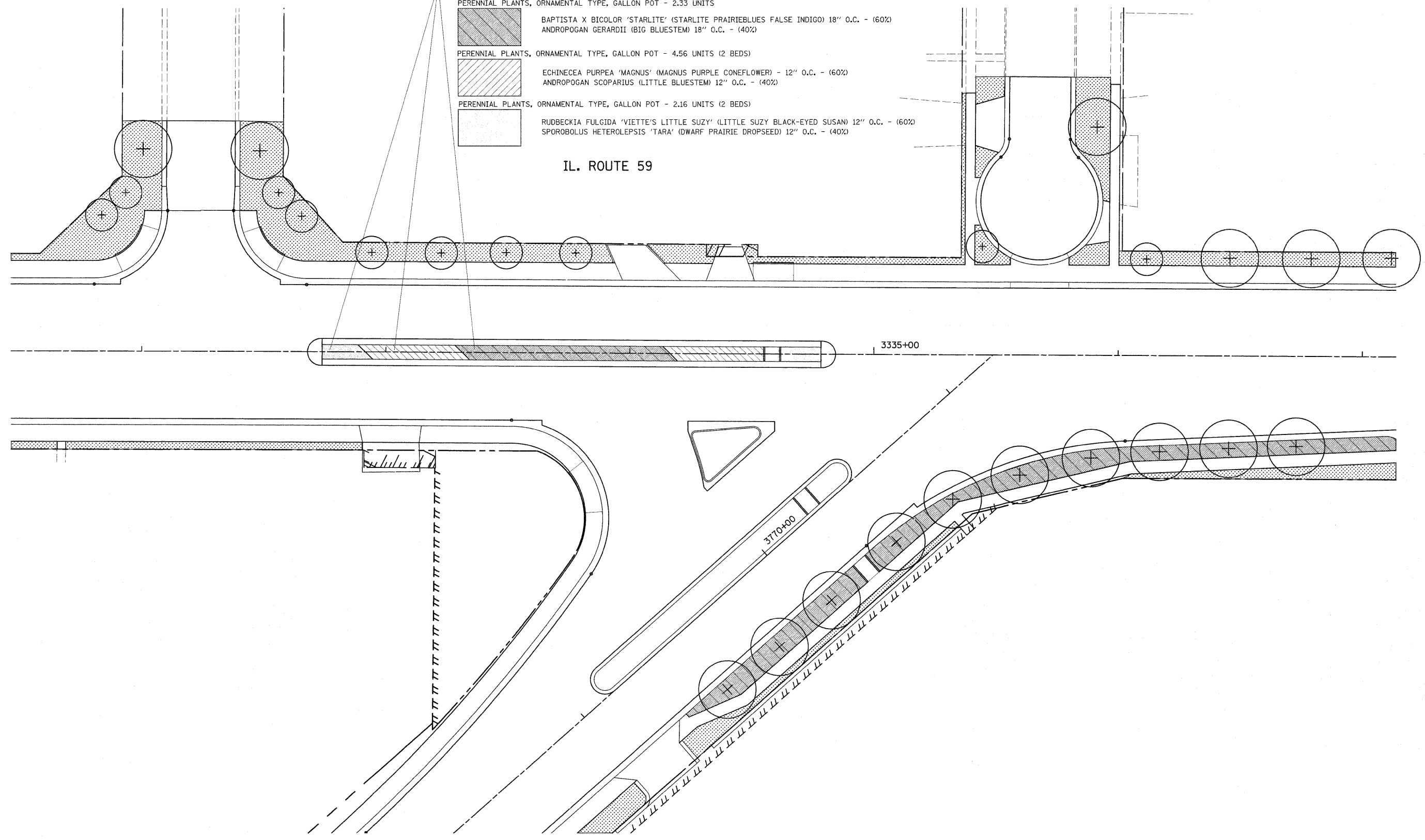


PLAINFIELD  
NORTH GATEWAY MEDIAN BED - STA. 3132+74 TO STA. 3334+74 (115 SQ. YDS.)



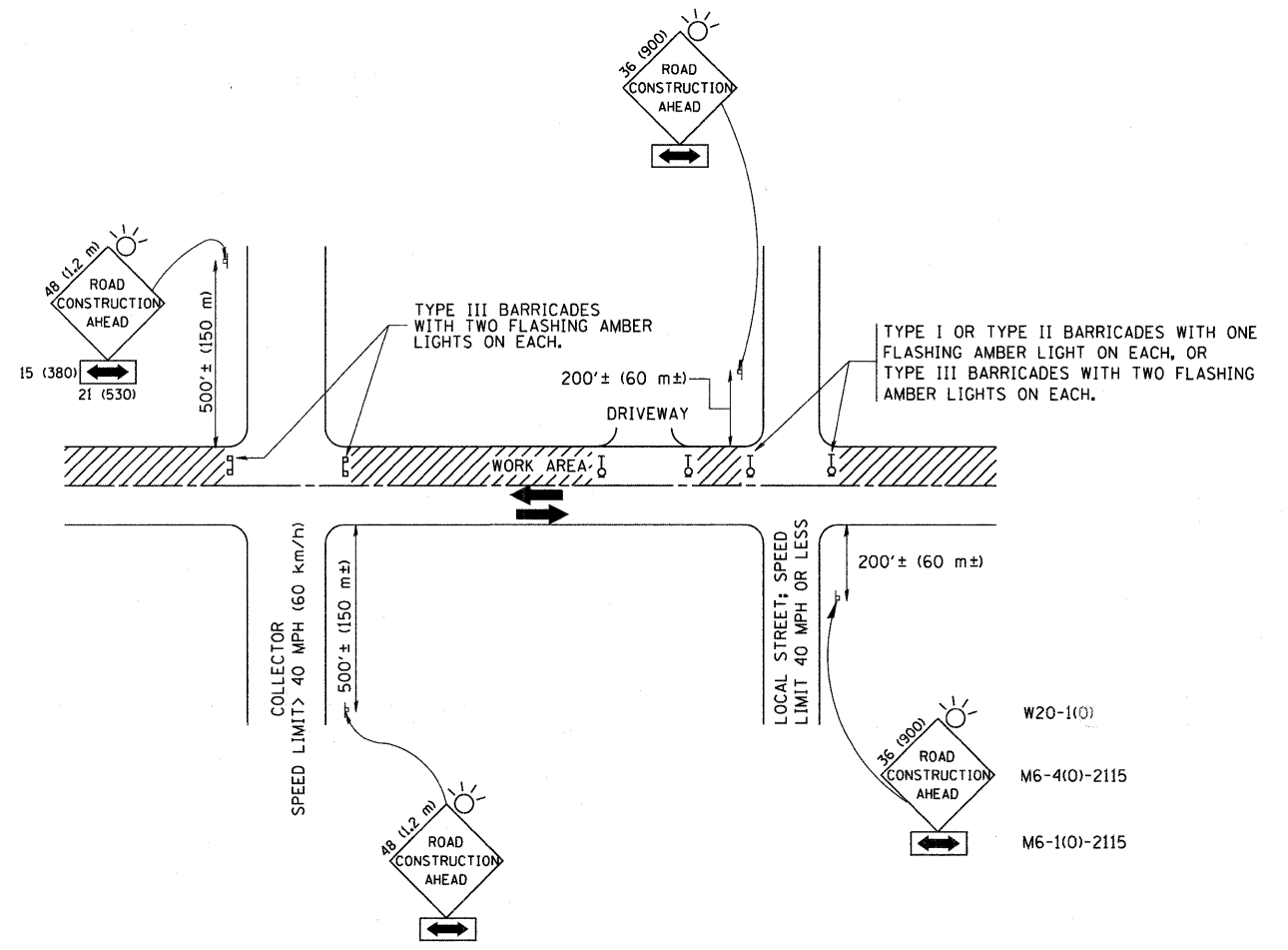
- PERENNIAL PLANTS, ORNAMENTAL TYPE, GALLON POT - 2.33 UNITS
  - BAPTISTA X BICOLOR 'STARLITE' (STARLITE PRAIRIEBLUES FALSE INDIGO) 18" O.C. - (60%)
  - ANDROPOGAN GERARDII (BIG BLUESTEM) 18" O.C. - (40%)
- PERENNIAL PLANTS, ORNAMENTAL TYPE, GALLON POT - 4.56 UNITS (2 BEDS)
  - ECHINECEA PURPEA 'MAGNUS' (MAGNUS PURPLE CONEFLOWER) - 12" O.C. - (60%)
  - ANDROPOGAN SCOPARIUS (LITTLE BLUESTEM) 12" O.C. - (40%)
- PERENNIAL PLANTS, ORNAMENTAL TYPE, GALLON POT - 2.16 UNITS (2 BEDS)
  - RUDEBECKIA FULGIDA 'VIETTE'S LITTLE SUZY' (LITTLE SUZY BLACK-EYED SUSAN) 12" O.C. - (60%)
  - SPOROBOLUS HETEROLEPSIS 'TARA' (DWARF PRAIRIE DROPSEED) 12" O.C. - (40%)

IL. ROUTE 59



FILE NAME =	USER NAME = bauerdl	DESIGNED -	REVISED -	<b>STATE OF ILLINOIS DEPARTMENT OF TRANSPORTATION</b>	<b>PLAINFIELD NORTH MEDIAN LANDSCAPE DETAIL IL. ROUTE 59 (I-55 TO IL RTE. 126)</b>	F.A.P. RTE.	SECTION	COUNTY	TOTAL SHEETS	SHEET NO.	
e:\pwork\pwork\baucrdl\0240764\MI1511-sh-t-landsop.dgn	PLOT SCALE = 20.0000 "/ IN.	DRAWN -	REVISED -			338	114-LS-1	WILL	26	25	
PLOT DATE = 2/9/2011	DATE -	CHECKED -	REVISED -			CONTRACT NO. 60M67					
						ILLINOIS FED. AID PROJECT					

SCALE: 1"=20' SHEET NO. 21 OF 21 SHEETS STA. 3132+74 TO STA. 3334+78



TRAFFIC CONTROL AND PROTECTION FOR SIDE ROADS, INTERSECTIONS, AND DRIVEWAYS

NOTES:

- A. FOR NO LANE RESTRICTION ON THE SIDE ROAD OR DRIVEWAYS
  1. SIDE ROAD WITH A SPEED LIMIT OF 40 MPH (60 km/h) OR LESS AS SHOWN ON THE DRAWING AND AS DIRECTED BY THE ENGINEER:
    - a) ONE ROAD CONSTRUCTION AHEAD SIGN 36 x 36 (900x900) WITH A FLASHER AND FLAG MOUNTED ON IT APPROXIMATELY 200' (60 m) IN ADVANCE OF THE MAIN ROUTE.
    - b) THE CLOSED PORTION OF THE MAIN ROUTE SHALL BE PROTECTED BY BLOCKING WITH TYPE I, TYPE II OR TYPE III BARRICADES, 1/3 OF THE CROSS SECTION OF THE CLOSED PORTION.
  2. SIDE ROAD WITH A SPEED LIMIT GREATER THAN 40 MPH (60 km/h) AS SHOWN ON THE DRAWING AND AS DIRECTED BY THE ENGINEER:
    - a) ONE ROAD CONSTRUCTION AHEAD SIGN 48 x 48 (1.2 m x 1.2 m) WITH A FLASHER MOUNTED ON IT APPROXIMATELY 500' (150 m) IN ADVANCE OF THE MAIN ROUTE.
    - b) THE CLOSED PORTION OF THE MAIN ROUTE SHALL BE PROTECTED BY BLOCKING WITH TYPE III BARRICADES, 1/2 OF THE CROSS SECTION OF THE CLOSED PORTION.
- 3. WHEN THE SIDE ROAD LIES BETWEEN THE BEGINNING OF THE MAINLINE SIGNING AND THE WORK ZONE, A SINGLE HEADED ARROW (M6-1) SHALL BE USED IN LIEU OF THE DOUBLE HEADED ARROW (M6-4).
- B. FOR A LANE CLOSURE ON A SIDE ROAD OR DRIVEWAY:
 

USE APPLICABLE PORTIONS OF THE TYPICAL APPLICATION OF TRAFFIC CONTROL DEVICES (STD. 701501, STD. 701606 OR THE APPROPRIATE STANDARD). THE SPACING OF SIGNS AND BARRICADES SHALL BE ADJUSTED FOR FIELD CONDITIONS AS DIRECTED BY THE ENGINEER. THE DIRECTIONAL ARROW SHALL BE COVERED OR REMOVED WHEN NO LONGER CONSISTENT WITH THE SIDE ROAD LANE CLOSURE.
- C. ADVANCE WARNING SIGNS ARE TO BE OMITTED ON DRIVEWAY UNLESS OTHERWISE NOTED.
- D. THE TRAFFIC CONTROL AND PROTECTION FOR SIDE ROADS, INTERSECTIONS, AND DRIVEWAYS SHALL BE INCIDENTAL TO THE COST OF SPECIFIED TRAFFIC CONTROL STANDARDS OR ITEMS.

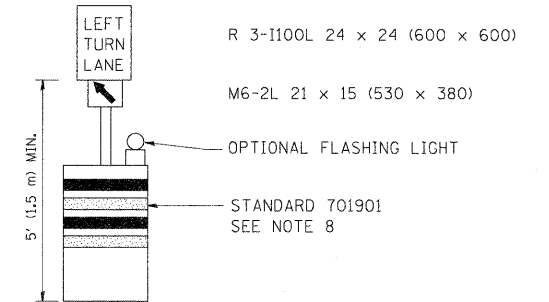
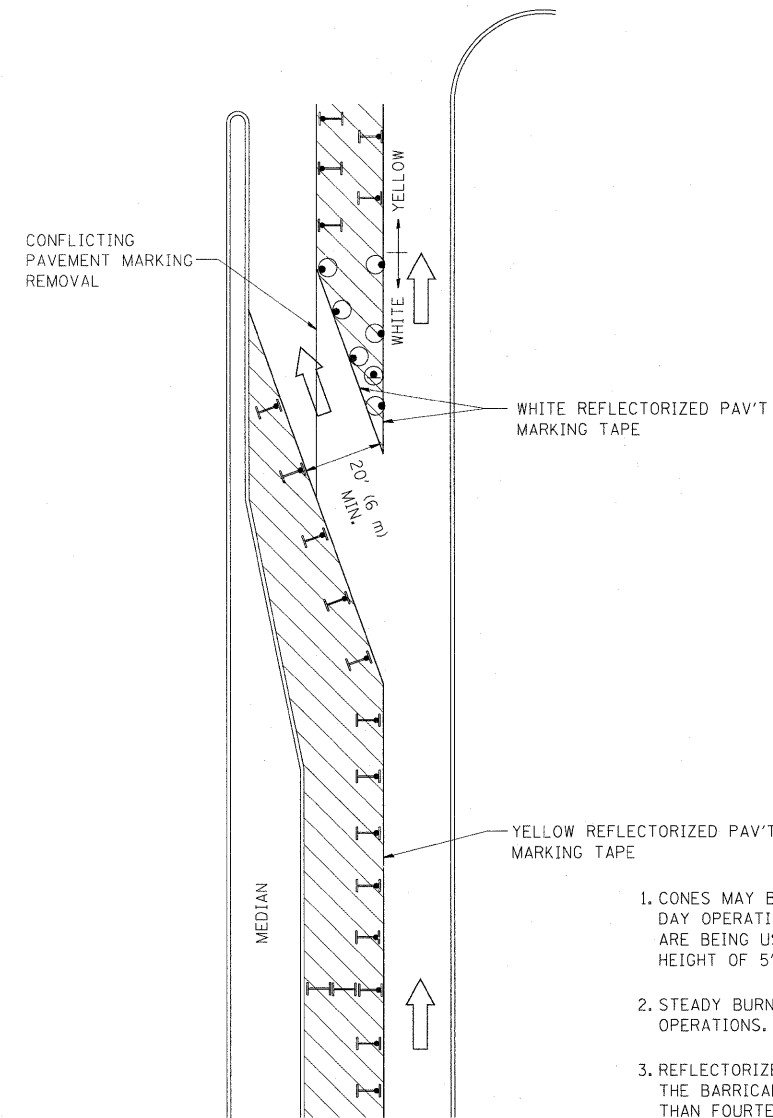
All dimensions are in millimeters (Inches) unless otherwise shown.

FILE NAME = W:\diststd\22x34\tc10.dgn	USER NAME = goglienobt	DESIGNED - LHA	REVISED - J. OBERLE 10-18-95
		DRAWN -	REVISED - A. HOUSEH 03-06-96
	PLOT SCALE = 50,000' / IN.	CHECKED -	REVISED - A. HOUSEH 10-15-96
	PLOT DATE = 1/4/2008	DATE - 06-89	REVISED - T. RAMMACHER 01-06-00

STATE OF ILLINOIS  
DEPARTMENT OF TRANSPORTATION

TRAFFIC CONTROL AND PROTECTION FOR SIDE ROADS, INTERSECTIONS, AND DRIVEWAYS			
SCALE: NONE	SHEET NO. 1	OF 1 SHEETS	STA. TO STA.

F.A. RTE.	SECTION	COUNTY	TOTAL SHEETS	SHEET NO.
	TC-10		28	26
FED. ROAD DIST. NO. 1 ILLINOIS FED. AID PROJECT			CONTRACT NO.	

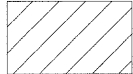
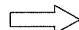
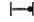





**GENERAL NOTES**

1. CONES MAY BE SUBSTITUTED FOR BARRICADES OR DRUMS AT HALF THE SPACING DURING DAY OPERATIONS. CONES SHALL BE A MINIMUM OF 28 (710) IN HEIGHT. WHEN CONES ARE BEING USED, THE "LEFT TURN LANE" SIGN MAY BE SKID MOUNTED AT A MINIMUM HEIGHT OF 5' (1.5 m).
2. STEADY BURNING LIGHTS WILL NOT BE REQUIRED ON BARRICADES OR DRUMS FOR DAY OPERATIONS. ALL LIGHTS SHALL BE MONODIRECTIONAL.
3. REFLECTORIZED TEMPORARY PAVEMENT MARKING TAPE SHALL BE PLACED THROUGHOUT THE BARRICADED AREA OF EACH TURN BAY WHERE THE CLOSURE TIME IS GREATER THAN FOURTEEN DAYS.
4. THIS APPLICATION ALSO APPLIES WHEN WORK IS BEING PERFORMED IN THE RIGHT LANE(S) AND THE RIGHT TURN BAY IS TO REMAIN OPEN. UNDER THIS CONDITION, "RIGHT TURN LANE" R3-100 24 x 24 (600 x 600) AND M6-2R 21 x 15 (530 x 380) SHALL BE USED.
5. THESE CONTROLS SHALL SUPPLEMENT MAINLINE TRAFFIC CONTROL FOR LANE CLOSURES.
6. LONGITUDINAL DIMENSIONS MAY BE ADJUSTED TO FIT FIELD CONDITIONS.
7. FORM OPER 725 IS REQUIRED.
8. IF A DRUM OR TYPE II BARRICADE WITH AN ATTACHED SIGN PANEL WHICH MEETS NCHRP 350 REQUIREMENTS IS NOT AVAILABLE, THE SIGNS SHALL BE MOUNTED, ABOVE THE BARRICADES, ON SEPARATE SIGNS SUPPORTS THAT MEET NCHRP 350 PREQUIREMENTS.
9. TRAFFIC CONTROL AND PROTECTION AT TURN BAYS (TO REMAIN OPEN TO TRAFFIC) SHALL BE INCLUDED IN THE COST SPECIFIED TRAFFIC CONTROL STANDARDS OR ITEMS.

All dimensions are in inches (millimeters) unless otherwise shown.

**LEGEND**

-  WORK AREA
-  LANE OPEN TO TRAFFIC
-  TYPE I OR II BARRICADE WITH STEADY BURN LIGHT
-  DRUM WITH STEADY BURN LIGHT
-  DRUM WITH SIGN (WITH OPTIONAL FLASHING LIGHT) SEE DETAIL
-  TYPE I OR II CHECK BARRICADE WITH FLASHING LIGHT

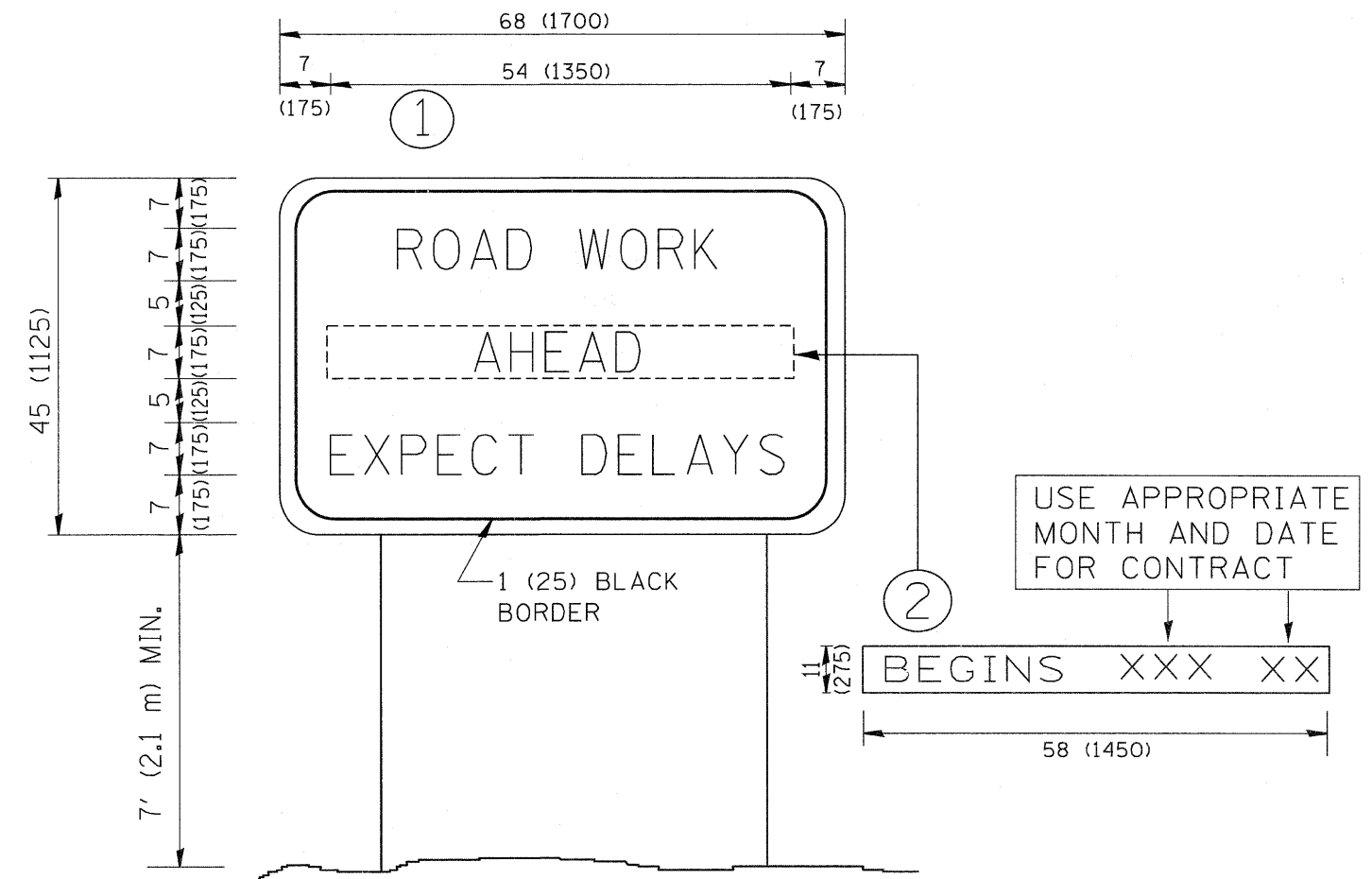
FILE NAME =	USER NAME = drivakosgn	REVISED -T. RAMMACHER 09-08-94	REVISED - R. BORO 09-14-09
es:\pwork\VPWIDOT\DRIVAKOSGN\d0108315\14.dgn		REVISED - A. HOUSEH 11-07-95	REVISED -
	PLOT SCALE = 49.9999' / IN.	REVISED - A. HOUSEH 10-12-96	REVISED -
	PLOT DATE = 9/14/2009	REVISED -T. RAMMACHER 01-06-00	REVISED -

**STATE OF ILLINOIS  
DEPARTMENT OF TRANSPORTATION**

**TRAFFIC CONTROL AND PROTECTION AT TURN BAYS  
(TO REMAIN OPEN TO TRAFFIC)**

SCALE: NONE SHEET NO. 1 OF 1 SHEETS STA. TO STA.

F.A. RTE.	SECTION	COUNTY	TOTAL SHEETS	SHEET NO.
	TC-14		28	27
FED. ROAD DIST. NO. 1 ILLINOIS FED. AID PROJECT			CONTRACT NO.	



**NOTES:**

1. USE BLACK LETTERING ON ORANGE BACKGROUND.
2. ERECT SIGNS IN ADVANCE OF THE LOCATION FOR THE "ROAD CONSTRUCTION AHEAD" SIGN AT LOCATIONS AS DIRECTED BY THE ENGINEER.
3. ERECT SIGN ① WITH INSTALLED PANEL ② ONE WEEK PRIOR TO THE START OF CONSTRUCTION.
4. REMOVE PANEL ② SOON AFTER THE START OF CONSTRUCTION.
5. SEE SPECIAL PROVISION FOR "TEMPORARY INFORMATION SIGNING" FOR ADDITIONAL INFORMATION.
6. ONE SIGN ASSEMBLY EQUALS 25.70 SQ. FT. (2.3 SQ. M.)
7. SHALL BE PAID FOR AS TEMPORARY INFORMATION SIGNING.

ALL DIMENSIONS ARE IN INCHES (MILLIMETERS) UNLESS OTHERWISE SHOWN.

FILE NAME = W:\diststd\22x34\to22.dgn	USER NAME = goglienobt	DESIGNED - DRAWN -	REVISED - R. MIRS 09-15-97 REVISED - R. MIRS 12-11-97	<b>STATE OF ILLINOIS DEPARTMENT OF TRANSPORTATION</b>	<b>ARTERIAL ROAD INFORMATION SIGN</b>		F.A. RTE.	SECTION	COUNTY	TOTAL SHEETS 28	SHEET NO. 28
PLOT SCALE = 50.000 "/ IN.	CHECKED -	REVISED - T. RAMMACHER 02-02-99	SCALE: NONE		SHEET NO. 1 OF 1 SHEETS	STA.	TO STA.	TC-22		CONTRACT NO.	
PLOT DATE = 1/4/2008	DATE -	REVISED - C. JUCIUS 01-31-07					FED. ROAD DIST. NO. 1		ILLINOIS	FED. AID PROJECT	