

F.A.P. RTE.	SECTION	COUNTY	TOTAL SHEETS	SHEET NO.
338	114-LS-1	WILL	28	1
		ILLINOIS	CONTRACT NO. 60M67	

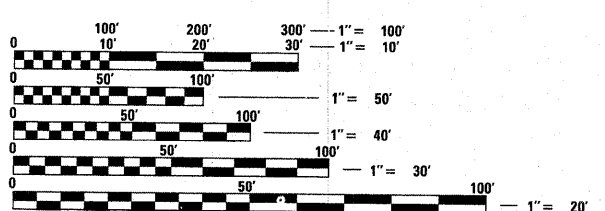
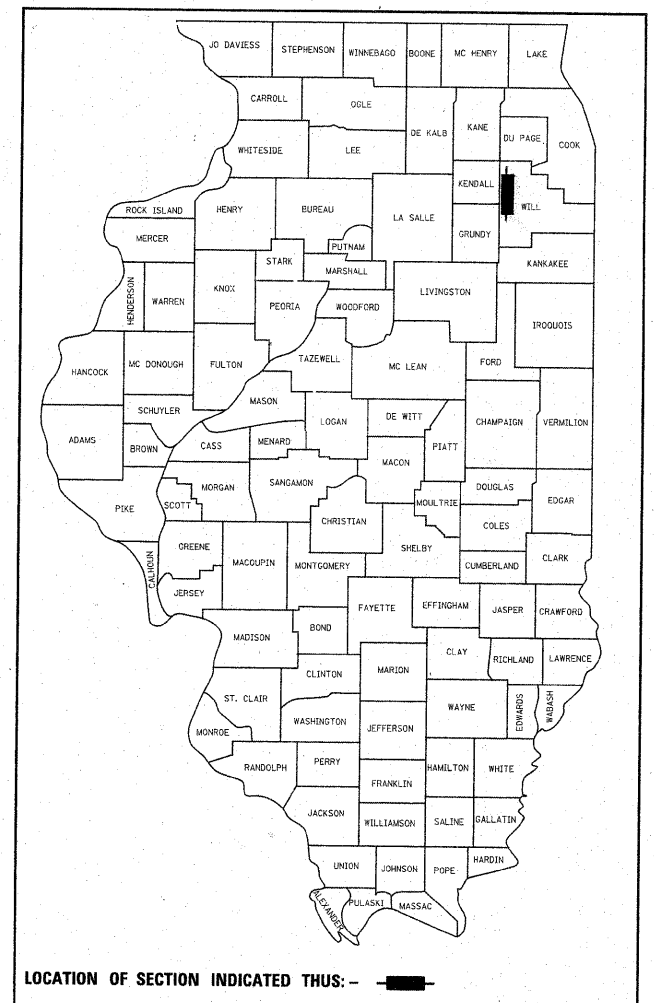
STATE OF ILLINOIS
DEPARTMENT OF TRANSPORTATION
DIVISION OF HIGHWAYS

**PROPOSED
HIGHWAY PLANS**

FAP338 IL. ROUTE 59 (I-55 TO IL. 126)
SECTION 114-LS-1
PROJECT: NHF-0338(042)
LANDSCAPING AND VEGETATION MANAGEMENT
WILL COUNTY
C-91-151-11

FOR INDEX OF SHEETS, SEE SHEET NO. 2

IMPROVEMENT LOCATED IN: VILLAGE OF SHOREWOOD,
UNINCORPORATED WILL COUNTY, CITY OF JOLIET,
AND THE VILLAGE OF PLAINFIELD

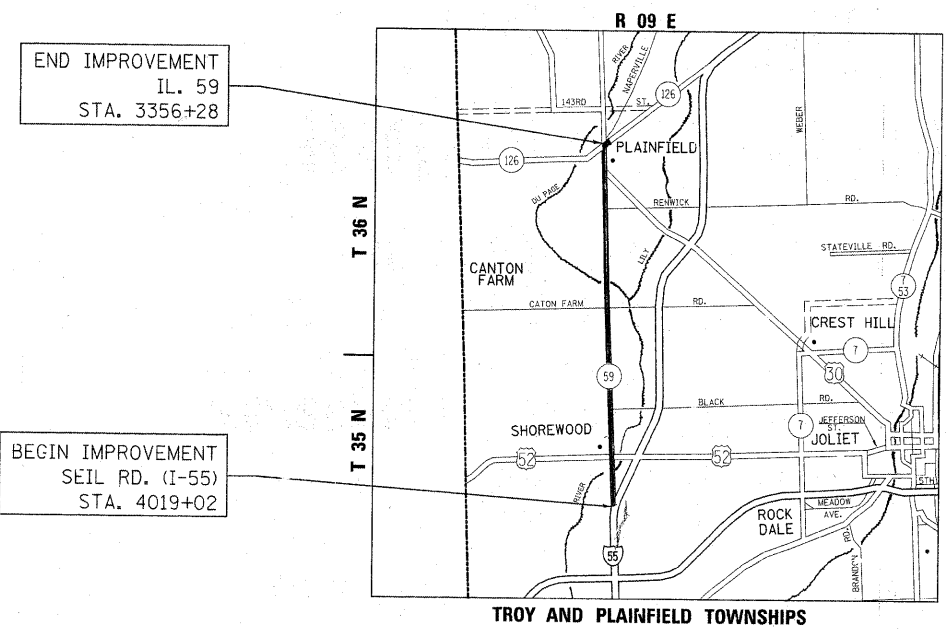


FULL SIZE PLANS HAVE BEEN PREPARED USING STANDARD ENGINEERING SCALES. REDUCED SIZED PLANS WILL NOT CONFORM TO STANDARD SCALES. IN MAKING MEASUREMENTS ON REDUCED PLANS, THE ABOVE SCALES MAY BE USED.

J.U.L.I.E.
JOINT UTILITY LOCATION INFORMATION FOR EXCAVATION
1-800-892-0123
OR 811

PROJECT MANAGER R. WANNER /S. LIPKIE

CONTRACT NO. 60M67



END IMPROVEMENT
IL. 59
STA. 3356+28

BEGIN IMPROVEMENT
SEIL RD. (I-55)
STA. 4019+02

TROY AND PLAINFIELD TOWNSHIPS
LOCATION MAP

GROSS LENGTH = 31,823 FT. = 6.27 MILE
NET LENGTH = 31,100 FT. = 5.89 MILE

TRAFFIC DATA:

IL 59 ADT
I-55 TO US 52: ADT = 23,000 (2020)
US 52 TO CATON FARM ROAD: ADT 33,000 (2030)
CATON FARM ROAD TO US 30: ADT 30,600 (2030)
US 30 TO IL 126: ADT = 40,200 (2030)

IL 59 SPEED LIMITS

SEIL RD TO BASS ST: POSTED = 45 MPH; DESIGN SPEED = 45 MPH
BASS ST TO US 52: POSTED = 35 MPH; DESIGN SPEED = 45 MPH
US 52 TO MEADOW DRIVE: DESIGN SPEED = 50 MPH; POSTED = 45 MPH
ROBERTS AVE TO US 30: POSTED = 35 MPH
US 30 TO IL 16: POSTED = 30 MPH



LOCATION OF SECTION INDICATED THUS: - [thick black line] -

STATE OF ILLINOIS
DEPARTMENT OF TRANSPORTATION
DIVISION OF HIGHWAYS

SUBMITTED FEBRUARY 10, 2011

Diane M. O'Keefe
DEPUTY DIRECTOR OF HIGHWAYS, REGION ENGINEER

March 05 2011
Scott E. Stitt, P.E.
acting ENGINEER OF DESIGN AND ENVIRONMENT

March 05 2011
Christine M. Reed
DIRECTOR OF HIGHWAYS, CHIEF ENGINEER

PRINTED BY THE AUTHORITY
OF THE STATE OF ILLINOIS