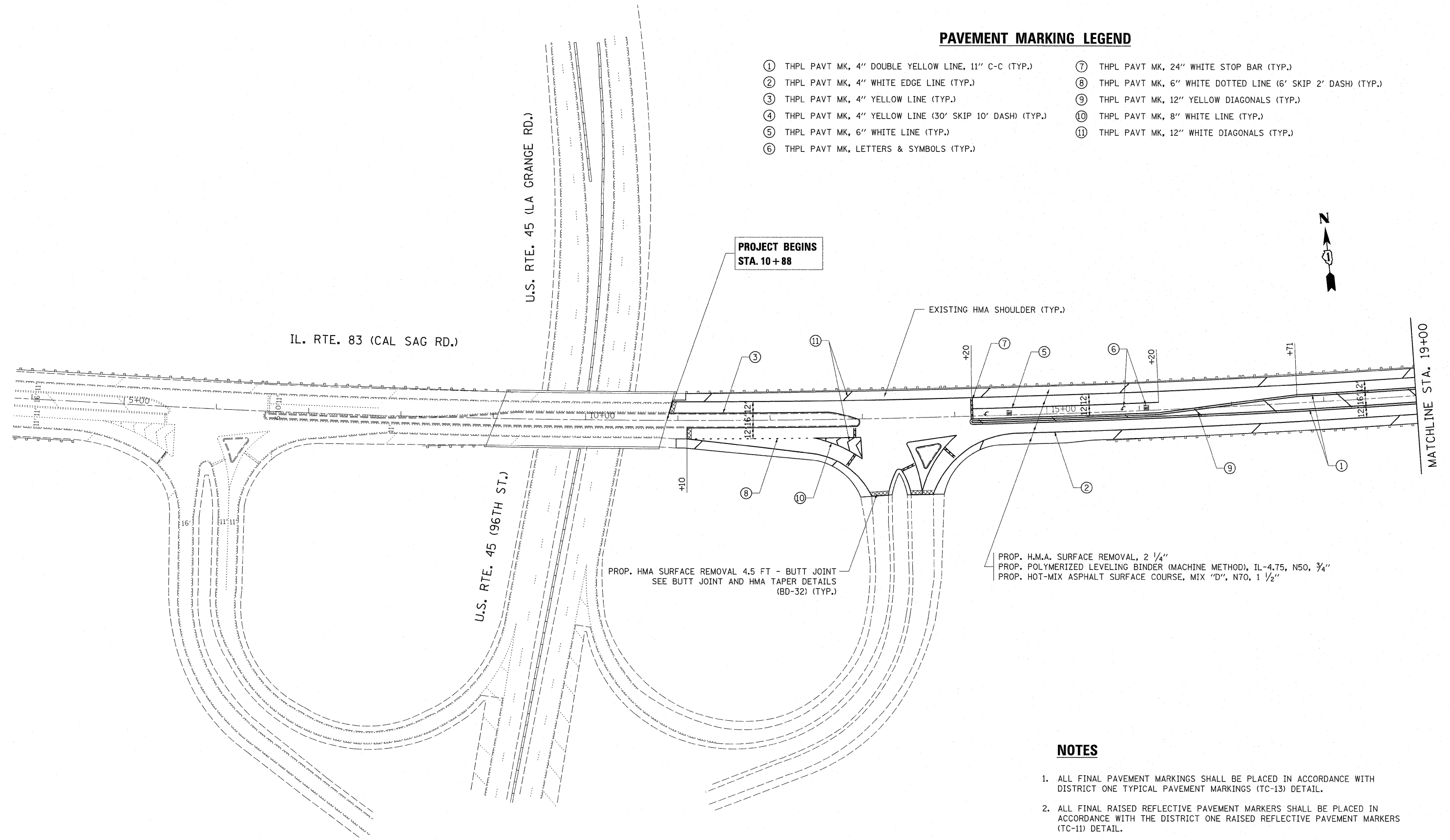


**PAVEMENT MARKING LEGEND**

- ① THPL PAVT MK, 4" DOUBLE YELLOW LINE, 11" C-C (TYP.)
- ② THPL PAVT MK, 4" WHITE EDGE LINE (TYP.)
- ③ THPL PAVT MK, 4" YELLOW LINE (TYP.)
- ④ THPL PAVT MK, 4" YELLOW LINE (30' SKIP 10' DASH) (TYP.)
- ⑤ THPL PAVT MK, 6" WHITE LINE (TYP.)
- ⑥ THPL PAVT MK, LETTERS & SYMBOLS (TYP.)
- ⑦ THPL PAVT MK, 24" WHITE STOP BAR (TYP.)
- ⑧ THPL PAVT MK, 6" WHITE DOTTED LINE (6' SKIP 2' DASH) (TYP.)
- ⑨ THPL PAVT MK, 12" YELLOW DIAGONALS (TYP.)
- ⑩ THPL PAVT MK, 8" WHITE LINE (TYP.)
- ⑪ THPL PAVT MK, 12" WHITE DIAGONALS (TYP.)



PROP. H.M.A. SURFACE REMOVAL, 2 1/4"  
 PROP. POLYMERIZED LEVELING BINDER (MACHINE METHOD), IL-4.75, N50, 3/4"  
 PROP. HOT-MIX ASPHALT SURFACE COURSE, MIX "D", N70, 1 1/2"

**NOTES**

1. ALL FINAL PAVEMENT MARKINGS SHALL BE PLACED IN ACCORDANCE WITH DISTRICT ONE TYPICAL PAVEMENT MARKINGS (TC-13) DETAIL.
2. ALL FINAL RAISED REFLECTIVE PAVEMENT MARKERS SHALL BE PLACED IN ACCORDANCE WITH THE DISTRICT ONE RAISED REFLECTIVE PAVEMENT MARKERS (TC-11) DETAIL.

FILE NAME =	USER NAME = pociechal	DESIGNED -	REVISED -	<b>STATE OF ILLINOIS DEPARTMENT OF TRANSPORTATION</b>	<b>IL RTE. 83 (CALUMET SAG RD.) (US 45 TO HIGHWOOD DR.) ROADWAY AND PAVEMENT MARKING PLAN</b>	F.A.P. RTE.	SECTION	COUNTY	TOTAL SHEETS	SHEET NO.	
ct\pw_work\pwsdot\pociechal\d0187931\DI5	910-sh-t-plan.dgn	DRAWN -	REVISED -			344	525-2-RS-1	COOK	19	5	
PLOT SCALE = 50,0000' / IN.		CHECKED -	REVISED -			SCALE: 1"=50'		SHEET NO. 1 OF 4 SHEETS		STA. 10+88 TO STA. 19+00	
PLOT DATE = 2/1/2011		DATE -	REVISED -			ILLINOIS FED. AID PROJECT					
					CONTRACT NO. 60K60						