



CITY OF DIXON, ILLINOIS

Post Office Box 386
Dixon, Illinois 61021
Telephone: 815.288.1485

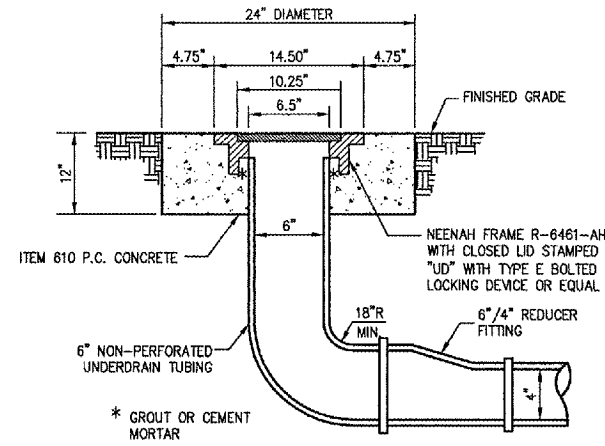
DIXON MUNICIPAL AIRPORT
CHARLES R. WALGREEN FIELD

OVERLAY TAXIWAYS B, D AND E;
REHABILITATE FRONTAGE APRON
PAVEMENT

AIP PROJECT NO. 3-17-0036-B7
IDA PROJECT NO. C73-3436

UNDERDRAIN SCHEDULE

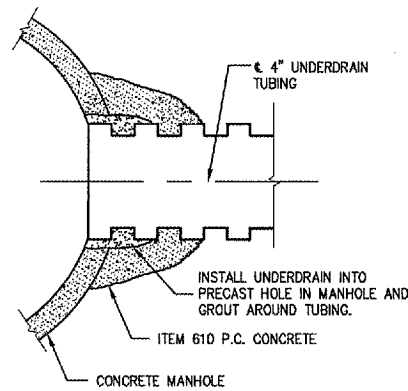
STRUCTURE DATA						PIPE DATA	
STRUCTURE	STATION	OFFSET (FT)	TYPE	FIN ELEV.	INVERT ELEV.	PAYLENGTH (FT)	SLOPE (%)
U3	900+77.32	41.97 LT	Existing Underdrain	---	E 771.91		
U3-A	901+59.82	16.72 LT	Cleanout	777.71	N 773.37	97.0	1.51
K8	900+95.59	15.69 LT	Manhole Connection	775.08	NE 773.08		
U8	900+99.59	88.01 LT	Capped End	---	--- 773.93	70.5	1.21
K9	901+97.40	32.41 LT	Manhole Connection	778.22 (K9 to U9) (K9 to K10)	NE 774.72 SE 774.72	55.0	0.07
K10	902+98.79	32.41 LT	Manhole Connection	779.28 (K10 to U10) (K10 to K11)	SW 775.78 NE 775.78 SE 775.78	100.0	1.06
K11	904+05.46	32.41 LT	Manhole Connection	780.28 (K11 to U11-A)	SW 776.78 NE 776.78	105.0	0.95
U11-A	904+09.56	42.32 LT	Capped End	---	S 776.85	9.0	0.69
U9	902+01.40	88.35 LT	Capped End	---	S 774.76	---	---
U10	903+02.79	88.19 LT	Capped End	---	S 775.35	---	---



NOTE:

FRAME AND LID, CONCRETE, 6\"/>

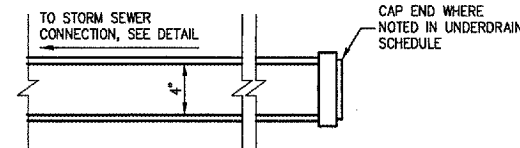
UNDERDRAIN CLEANOUT



NOTE:

HOLE FOR UNDERDRAIN TO BE PRECAST INTO MANHOLES AT PROPER INVERT.

UNDERDRAIN CONCRETE COLLAR AND GROUT CONNECTION



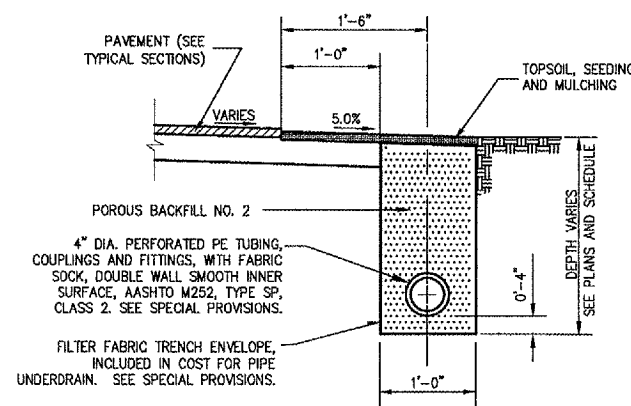
NOTE:

CAP MUST BE APPROVED PRIOR TO INSTALLATION, SEE SPECIAL PROVISIONS.

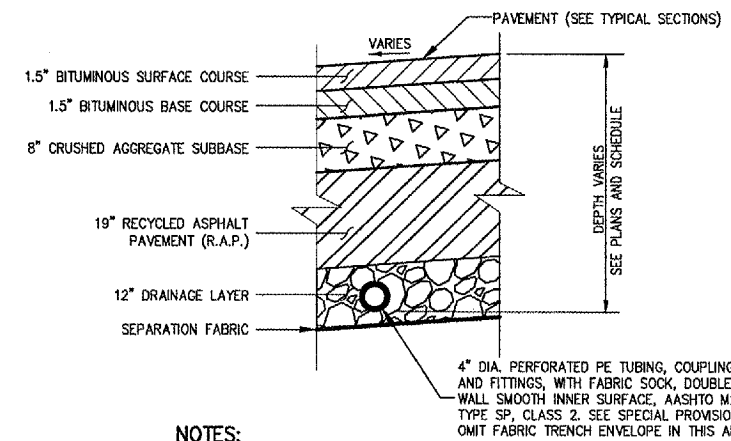
UNDERDRAIN CAPPED END

NOTES:

- SEE SUPPLEMENTAL SPECIFICATIONS AND SPECIAL PROVISIONS FOR PIPE MATERIAL SPECIFICATIONS.
- SEE DETAILS AND SUPPLEMENTAL SPECIFICATIONS AND SPECIAL PROVISIONS FOR TRENCH BACKFILL AND COMPACTION REQUIREMENTS.
- STATION AND OFFSET IS GIVEN TO THE CENTER OF THE CLEANOUT.
- SEE DETAILS FOR ADDITIONAL STRUCTURE INFORMATION.
- REFER TO UNDERDRAIN CLEANOUT DETAIL FOR FRAME AND LID INFORMATION.



UNDERDRAIN ALONG PAVEMENT EDGE



NOTES:

- UNDERDRAIN TO BE INSTALLED WITHIN THE 12\"/>
- ANY SEPARATION FABRIC DAMAGED DURING THE INSTALLATION OF THE UNDERDRAIN TO BE EXCAVATED AND REPLACED.

UNDERDRAIN UNDER PAVEMENT

No.	Drawing Issue	Description	Date	By

Date
11 MARCH 2005
Sheet Title

UNDERDRAIN SCHEDULE AND DETAILS

843-04B8007
Project Number
KLK 02/03/05
Layout By Date
KLK, TMM 02/03/05
Designed By Date
RMH 03/11/05
Reviewed By Date
KLK
Drawn By

I:\CADD\020843\04B8007\DRAWINGS\SHEETS\52-UNDERDRAIN SCHEDULE.DWG, MAR 22, 2005 10:04AM KLK