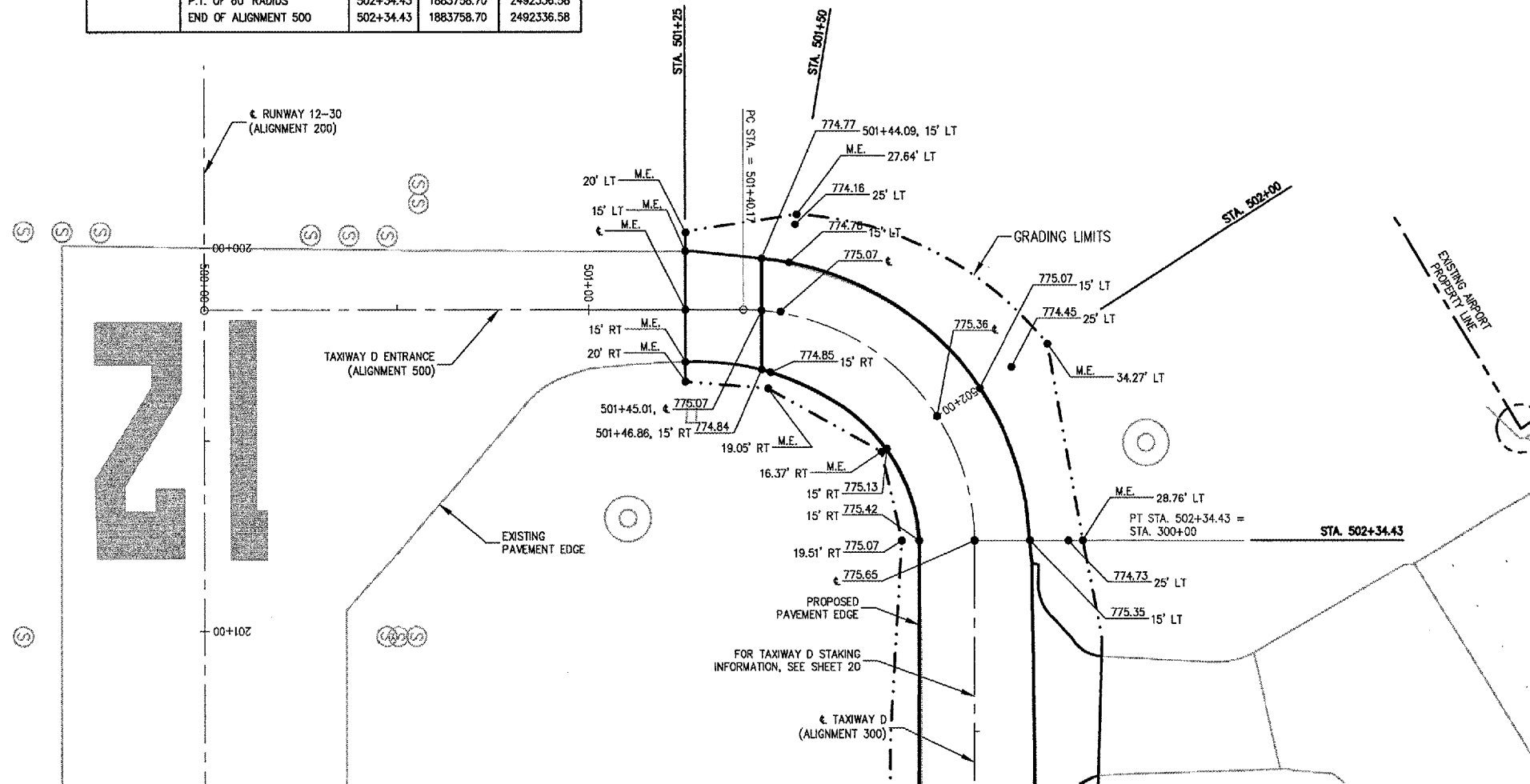


ALIGNMENT DATA
OVERLAY TAXIWAYS B, D AND E

RUNWAY/ TAXIWAY	DESCRIPTION	STATION	STATE PLANE COORDINATES	
			NORTHING	EASTING
RUNWAY 12-30	BEGINNING OF ALIGNMENT 200	198+00	1883728.78	2491996.80
	END OF ALIGNMENT 200	230+00	1882086.99	2494743.53
TAXIWAY D	BEGINNING OF ALIGNMENT 300	298+00	1883810.14	2492250.82
	END OF ALIGNMENT 300	307+00	1883398.59	2492936.84
TAXIWAY E	BEGINNING OF ALIGNMENT 400	414+25.00	1883090.53	2493522.59
	P.C. OF 75' RADIUS	414+25.00	1883090.53	2493522.59
	CENTER OF 75' RADIUS	-----	1883092.36	2493597.55
	P.T. OF 75' RADIUS	415+00.53	1883027.98	2493559.07
	END OF ALIGNMENT 400	427+22.59	1882400.99	2494608.03
TAXIWAY D ENTRANCE	BEGINNING OF ALIGNMENT 500	500+00	1883617.86	2492182.38
	P.C. OF 60' RADIUS	501+40.17	1883738.18	2492254.29
	CENTER OF 60' RADIUS	-----	1883707.25	2492305.71
	P.T. OF 60' RADIUS	502+34.43	1883758.70	2492336.58
	END OF ALIGNMENT 500	502+34.43	1883758.70	2492336.58

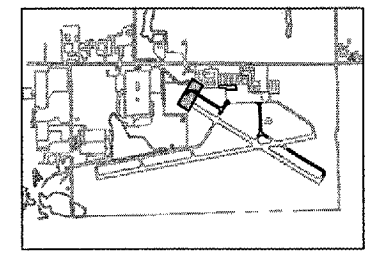
RUNWAY/ TAXIWAY	DESCRIPTION	STATION	STATE PLANE COORDINATES	
			NORTHING	EASTING
TAXIWAY A	BEGINNING OF ALIGNMENT 600	600+00	1883276.75	2492753.05
	END OF ALIGNMENT 600	604+00	1883618.88	2492960.30
TAXIWAY B	BEGINNING OF ALIGNMENT 700	700+00	1882877.79	2493420.53
	P.C. OF 75' RADIUS	701+79.13	1883031.54	2493512.43
	CENTER OF 75' RADIUS	-----	1883070.02	2493448.05
	P.T. OF 75' RADIUS	702+21.37	1883071.85	2493523.03
	END OF ALIGNMENT 700	708+00	1883650.32	2493508.91
TAXIWAY E ENTRANCE	BEGINNING OF ALIGNMENT 800	800+00	1882196.10	2494560.99
	P.C. OF 65' RADIUS	801+34.88	1882311.74	2494630.41
	CENTER OF 65' RADIUS	-----	1882345.20	2494574.69
	P.T. OF 65' RADIUS	802+37.10	1882400.99	2494608.03
	END OF ALIGNMENT 800	802+37.10	1882400.99	2494608.03



HANSON
HANSON PROFESSIONAL SERVICES INC.
815 Commerce Drive Suite 200
Oak Brook, Illinois 60523
Telephone: 630.990.3800
Fax: 630.990.3801

City of Dixon
CITY OF DIXON, ILLINOIS
Post Office Box 386
Dixon, Illinois 61021
Telephone: 815.288.1485

DIXON MUNICIPAL AIRPORT
CHARLES R. WALGREEN FIELD
OVERLAY TAXIWAYS B, D AND E
REHABILITATE FRONTAGE APRON
PAVEMENT
AIP PROJECT NO. 3-17-0036-B7
IDA PROJECT NO. C73-3436



KEY PLAN

No.	Drawing Issue Description	Date	By

Date
11 MARCH 2005

Sheet Title
STAKING PLAN
TAXIWAY D ENTRANCE
STA 501+25 TO
STA 502+34.43

843-04B8007
Project Number
KLK 02/03/05
Layout By Date
KLK, TMM 02/03/05
Designed By Date
RMH 03/11/05
Reviewed By Date
KLK | DSY | ---
Drawn By Sheet No.

LEGEND

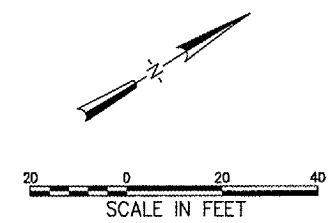
---	PROPOSED GRADING LIMITS
==	EXISTING SWALE
->	EXISTING UNDERDRAIN
⊙	EXISTING STORM SEWER MANHOLE
●	PROP. EL. STATION; OFFSET
⊙	EXISTING STAKE MOUNTED LIGHT
⊞	EXISTING BASE MOUNTED LIGHT
□	EXISTING GUIDANCE SIGN

- NOTES:**
- ALIGNMENTS ARE BASED ON STATE PLANE COORDINATE (ILLINOIS-WEST). SEE ALIGNMENT DATA TABLE, THIS SHEET.
 - FOR ADDITIONAL GRADING INFORMATION, SEE PLAN AND PROFILE SHEETS AND CROSS SECTIONS.
 - PROPOSED PAVEMENT EDGES TO MATCH EXISTING LOCATIONS.
 - STAKING POINTS AT CROSS SECTIONS UNLESS NOTED OTHERWISE.
 - FOR SEEDING INFORMATION, SEE LANDSCAPING PLAN.
 - SEE FRONTAGE APRON STAKING PLAN FOR RESPECTIVE ALIGNMENT DATA, NOTES AND STAKING INFORMATION.

EARTHWORK QUANTITIES

	VOLUME (C.Y.)
TOPSOIL (FROM OFF SITE) ITEM AR905520	415.0

NOTE:
EARTHWORK QUANTITIES FOR OVERLAY TAXIWAYS B, D AND E ONLY. FOR REHABILITATE FRONTAGE APRON PAVEMENT EARTHWORK QUANTITIES, SEE RESPECTIVE STAKING PLAN.



A: 104,655 (02/03/05) (DRAWINGS) SHEETS (A) - STAKING TAXIWAY D ENTRANCE DWG MAR 17, 2005 9:45AM KLK