

### STAGE 1A, 1B AND 1C

DI020

**NOTES:**

- STAGE 1 TO BEGIN AT NOTICE-TO-PROCEED.
- ALL CONTRACTOR'S ACTIVITIES SHALL BE LIMITED TO THE STAGE 1 AREAS AS SHOWN.
- ALL CONSTRUCTION EQUIPMENT WILL BE LIMITED TO A HEIGHT OF 25 FEET UNLESS PRIOR APPROVAL GIVEN BY THE ENGINEER.
- SEE CONSTRUCTION AND SAFETY NOTES, SHEET 4.

**THE FOLLOWING ITEMS ARE TO BE COMPLETED IN STAGE 1:**

- STAGE 1A MUST START PRIOR TO STAGES 1B AND 1C START. STAGES 1B AND 1C TO START PRIOR TO STAGE 1A COMPLETION.
- STAGES 1B AND 1C TO BE COMPLETED SEQUENTIALLY.
- PLACE LATHING AND WARNING TAPE AND BARRICADES AS SHOWN.
- INSTALL TEMPORARY SOIL EROSION CONTROL MEASURES AS REQUIRED.
- INSTALL APRON FRONTAGE STORM SEWER PIPE AND DRAINAGE STRUCTURES.
- REMOVE EXISTING APRON FRONTAGE BITUMINOUS PAVEMENT AND UNDERCUT.
- INSTALL GEOTEXTILE FABRIC OVER SUBGRADE IN APRON FRONTAGE AREA.
- PLACE DRAINAGE LAYER IN APRON FRONTAGE AREA.
- MILL EXISTING TAXIWAY CRACKS WITHIN STAGE 1B AND 1C LIMITS AND PLACE PAVEMENT MILLINGS IN APRON FRONTAGE AREA.
- PLACE AGGREGATE BASE IN APRON FRONTAGE AREA.
- INSTALL UNDERDRAINS IN APRON FRONTAGE AREA.
- COMPLETE TAXIWAY PARTIAL DEPTH PATCHES WITHIN STAGE 1B AND 1C LIMITS.
- OVERLAY TAXIWAY PAVEMENTS WITHIN STAGE 1B AND 1C LIMITS.
- CONSTRUCT APRON FRONTAGE BITUMINOUS PAVEMENT.
- FILL SHOULDERS ALONG TAXIWAY PAVEMENT EDGES WITHIN STAGE 1B AND 1C LIMITS.
- REGRADE APRON FRONTAGE SHOULDER AND SWALE.
- PLACE TOPSOIL, SEEDING AND MULCHING WITHIN TAXIWAY STAGE 1B AND 1C LIMITS AND APRON FRONTAGE AREA.
- PLACE TAXIWAY PAVEMENT MARKINGS AND RETROFLECTIVE TAXIWAY EDGE MARKERS WITHIN STAGE 1B AND 1C LIMITS. (SEE STAGE 2A NOTES.)
- REMOVE ANY REMAINING DEBRIS AND SWEEP PAVEMENTS WITHIN ALL STAGE 1 LIMITS.
- REMOVE LATHING AND WARNING TAPE AND BARRICADES.



HANSON PROFESSIONAL SERVICES INC.  
815 Commerce Drive Suite 200  
Oak Brook, Illinois 60523  
Telephone: 630.990.3800  
Fax: 630.990.3801

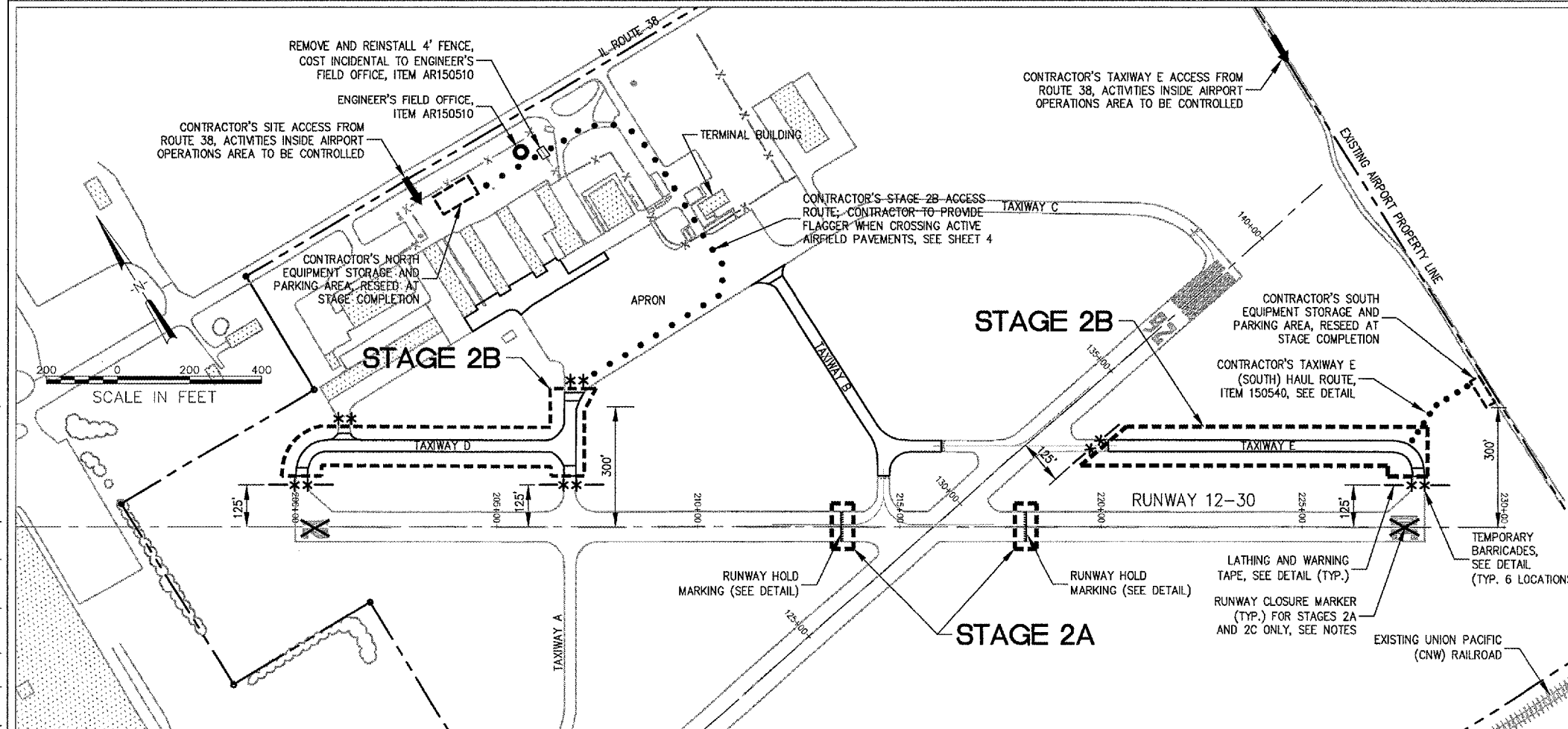


CITY OF DIXON, ILLINOIS  
Post Office Box 386  
Dixon, Illinois 61021  
Telephone: 815.288.1485

DIXON MUNICIPAL AIRPORT  
CHARLES R. WALGREEN FIELD

OVERLAY TAXIWAYS B, D AND E;  
REHABILITATE FRONTAGE APRON  
PAVEMENT

AIP PROJECT NO. 3-17-0036-B7  
IDA PROJECT NO. C73-3436



### STAGE 2A, 2B AND 2C

**NOTES:**

- STAGE 2 TO BEGIN UPON COMPLETION OF STAGE 1 AND WITH APPROVAL OF THE RESIDENT ENGINEER.
- ALL CONTRACTOR'S ACTIVITIES SHALL BE LIMITED TO THE STAGE 2 AREAS AS SHOWN.
- STAGE 2A MAY BE COMPLETED DURING STAGE 1C PROVIDED RUNWAY 12-30 IS CLOSED.
- ALL CONSTRUCTION EQUIPMENT WILL BE LIMITED TO A HEIGHT OF 25 FEET UNLESS PRIOR APPROVAL GIVEN BY THE ENGINEER.
- CONTRACTOR'S EQUIPMENT MAY NOT DISRUPT FLIGHT OPERATIONS ON RUNWAY 8-26.
- SEE CONSTRUCTION AND SAFETY NOTES, SHEET 4.
- RUNWAY 12-30 TO BE CLOSED WHILE ANY MARKINGS OR EDGE MARKERS PLACED WITHIN 125' OF THE RUNWAY 12-30 CENTERLINE.

**THE FOLLOWING ITEMS ARE TO BE COMPLETED IN STAGE 2A: (STAGE 2A WORK MAY BE COMPLETED DURING STAGE 1C PROVIDED RUNWAY 12-30 IS CLOSED AND STAGE 2A PROCEDURES ARE FOLLOWED.)**

- CLOSE RUNWAY 12-30.
- PLACE PAVEMENT MARKINGS WITHIN STAGE 2A LIMITS.
- REOPEN RUNWAY 12-30.

**THE FOLLOWING ITEMS ARE TO BE COMPLETED IN STAGE 2B:**

- PLACE LATHING AND WARNING TAPE AND BARRICADES AS SHOWN.
- INSTALL TEMPORARY SOIL EROSION CONTROL MEASURES AS REQUIRED.
- COMPLETE HAUL ROUTE
- COMPLETE PARTIAL DEPTH PATCHES WITHIN STAGE 2B LIMITS.
- OVERLAY PAVEMENTS WITHIN STAGE 2B LIMITS.
- FILL SHOULDERS ALONG PAVEMENT EDGES WITHIN STAGE 2B LIMITS.
- PLACE TOPSOIL, SEEDING AND MULCHING WITHIN STAGE 2B LIMITS.
- REMOVE HAUL ROUTE AND RESEED.
- COMPLETE PAVEMENT MARKINGS AND RETROFLECTIVE TAXIWAY EDGE MARKERS WITHIN STAGE 2B LIMITS.
- REMOVE LATHING AND WARNING TAPE AND BARRICADES AND SOIL EROSION CONTROL MEASURES WHEN POSSIBLE.

**THE FOLLOWING ITEMS ARE TO BE COMPLETED IN STAGE 2C:**

- CLOSE RUNWAY 12-30.
- PLACE ALL REMAINING PAVEMENT MARKINGS AND RETROFLECTIVE TAXIWAY EDGE MARKERS WITHIN THE RUNWAY 12-30 SAFETY AREA.
- REOPEN RUNWAY 12-30.

No.	Drawing Issue	Description	Date	By

Date  
11 MARCH 2005  
Sheet Title

### CONSTRUCTION STAGING PLAN

843-04B8007  
Project Number  
KLK 02/03/05  
Layout By Date  
KLK,TMM 02/03/05  
Designed By Date  
RMH 03/11/05  
Reviewed By Date  
KLK  
Drawn By

F:\04\0205\0004\01\DRAWINGS\02-STAGING\DWG MAR 22, 2005 9:02AM KLK