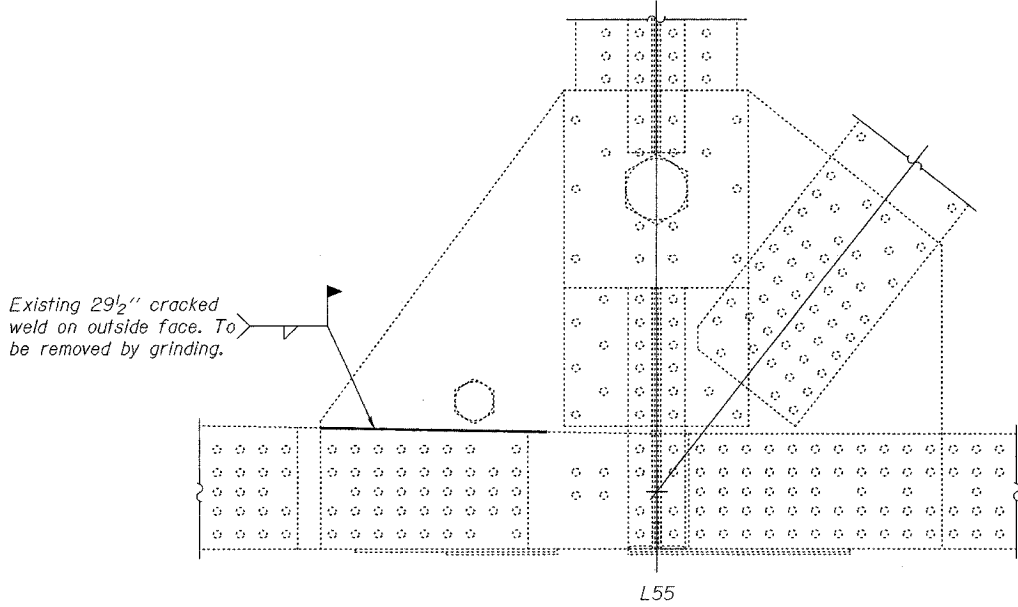
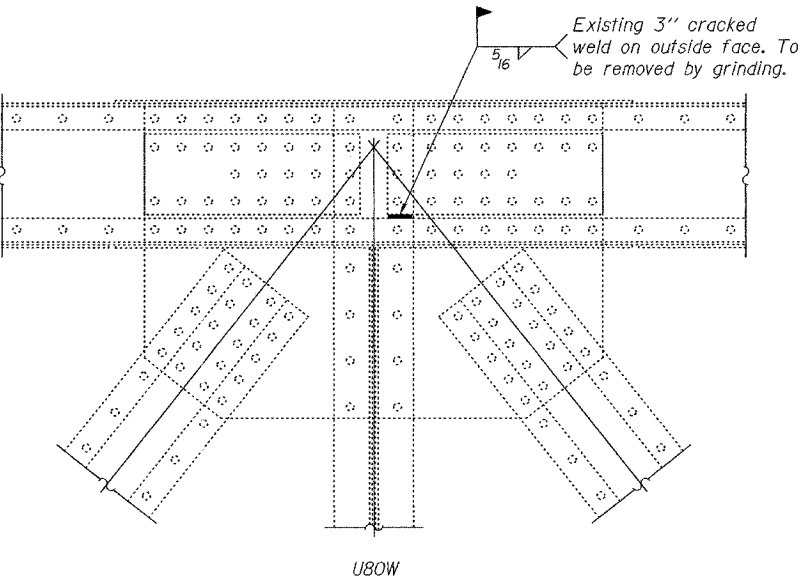


STATE OF ILLINOIS  
DEPARTMENT OF TRANSPORTATION

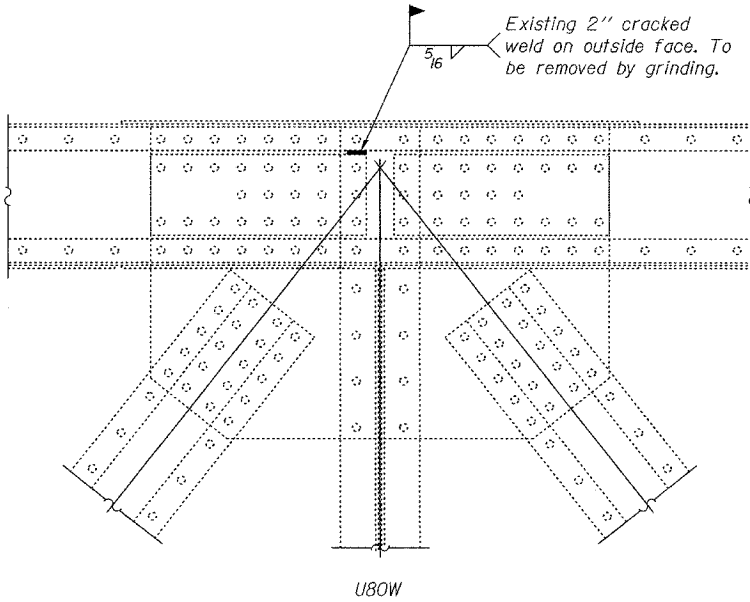
ROUTE NO.	SECTION	COUNTY	TOTAL SHEETS	SHEET NO.
FAS 944	*	ALEXANDER	15	12
FED. ROAD DIST. NO. 7		ILLINOIS	FED. AID PROJECT	
		* (138D-BR)I-5		Contract No. 98640



L55  
**REPAIR 12**



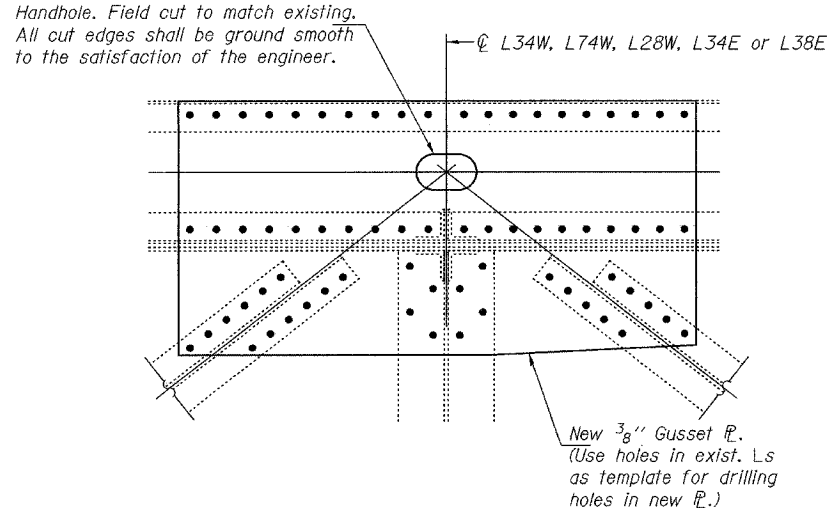
U80W  
INSIDE FACE



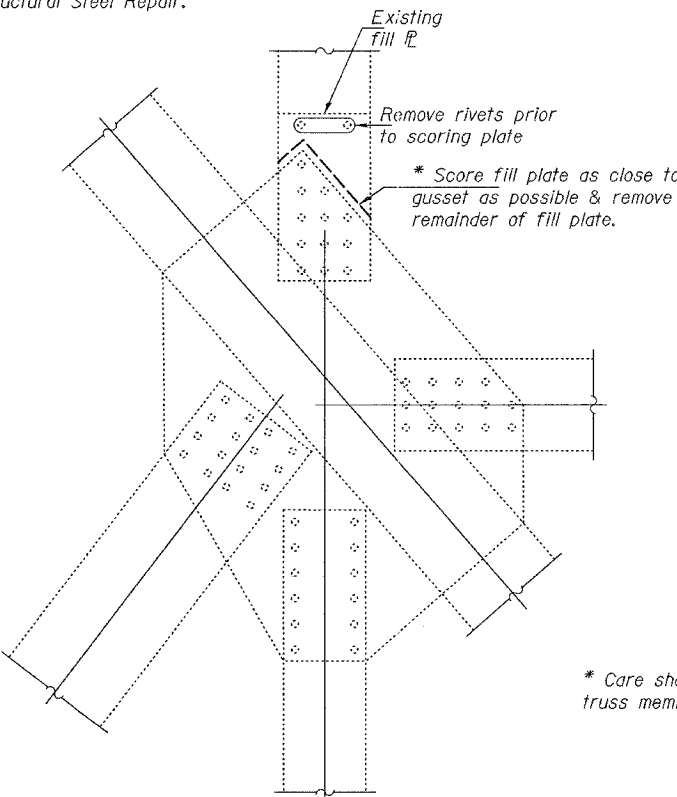
U80W  
OUTSIDE FACE

**REPAIR 12**

Note:  
The cost of weld removal & field welding is included with Structural Steel Repair.



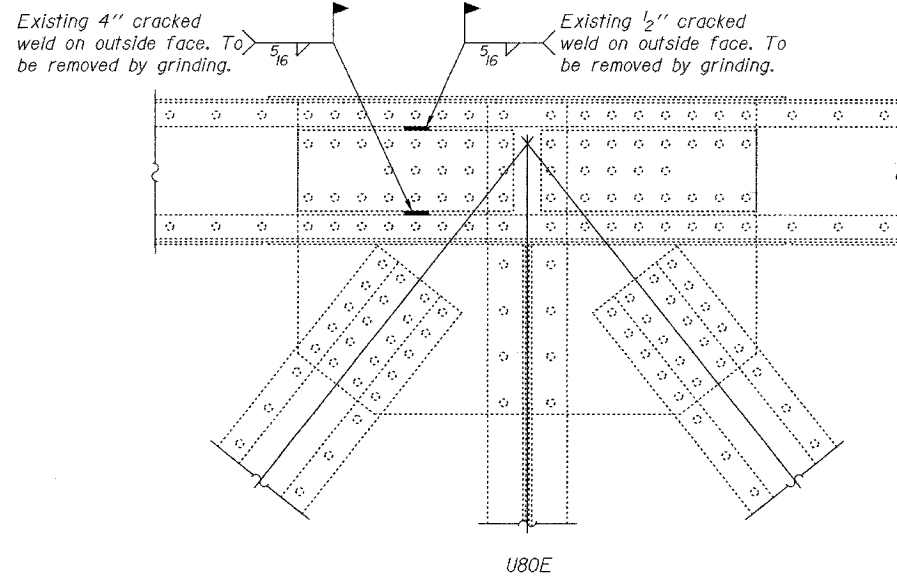
**GUSSET PLATE REPAIR**  
**REPAIR 14**



@ U39E-L39E, U39W-L39W,  
U41E-L41E, U41W-L41W,  
U61E-L61E, U61W-L61W,  
U63W-L63W or U63E-L63E

**REPAIR 13**

\* Care shall be taken not to damage any truss members during the removal process.



U80E  
INSIDE FACE

**REPAIR 12**

**BRIDGE REPAIRS**  
**OLD CAIRO BRIDGE OVER MISSISSIPPI RIVER**  
**FAS RTE. 944 (US 60 & 62)**  
**SEC. (138D-BR)I-5**  
**ALEXANDER COUNTY**  
**SN 002-0005**

DESIGNED	DAB
CHECKED	JSB
DRAWN	balliva
CHECKED	DAB JSB

MARCH 14, 2005  
EXAMINED *John A. Morris*  
ENGINEER OF STRUCTURAL SERVICES  
PASSED *Ralph E. Anderson*  
ENGINEER OF BRIDGES AND STRUCTURES