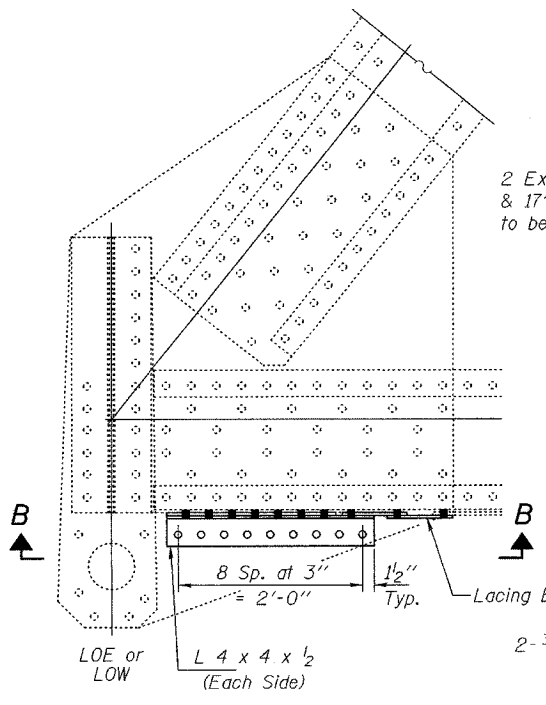


STATE OF ILLINOIS  
DEPARTMENT OF TRANSPORTATION

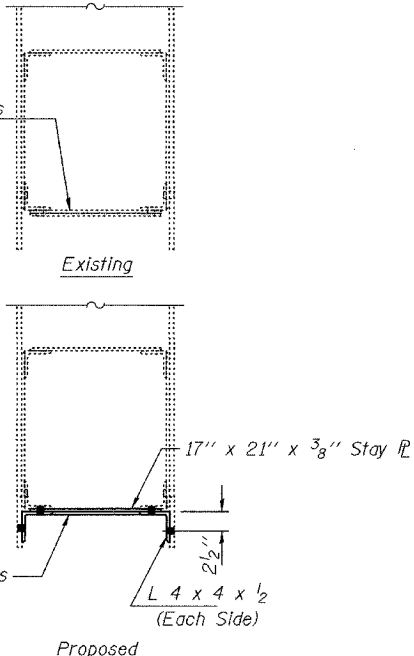
ROUTE NO.	SECTION	COUNTY	TOTAL SHEETS	SHEET	SHEET NO. 9
FAS 944	*	ALEXANDER		12	13 SHEETS
FED. ROAD DIST. NO. 7	ILLINOIS	FED. AID PROJECT			

\* (138D-BR)1-5 Contract No. 98640

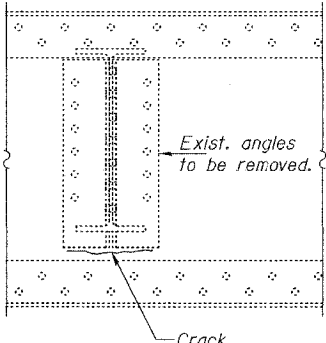


ELEVATION LOWER CHORD REPAIR

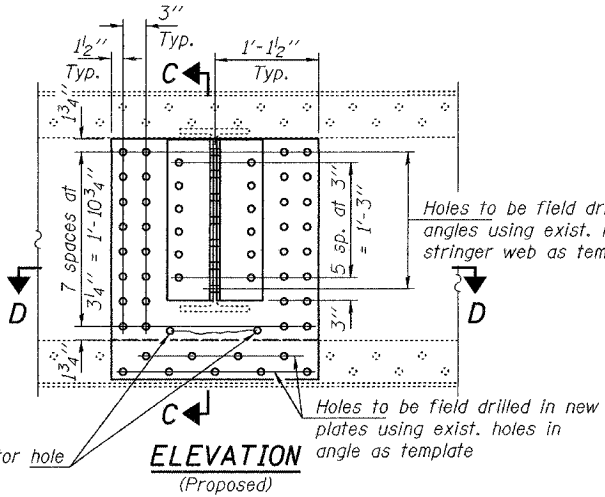
REPAIR 6



SECTION A-A

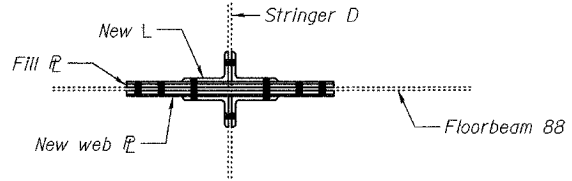


ELEVATION (Existing)

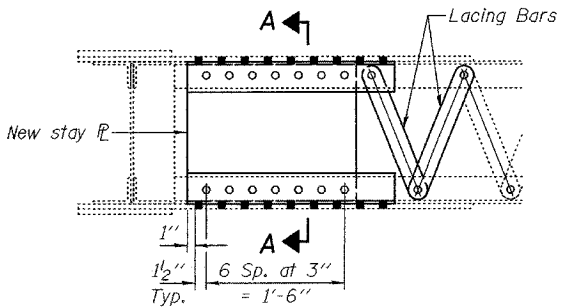


REPAIR 9

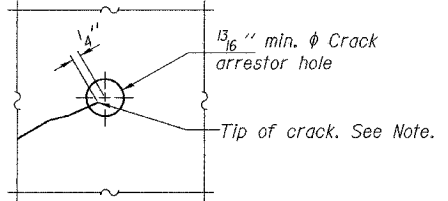
ELEVATION (Proposed)



SECTION D-D

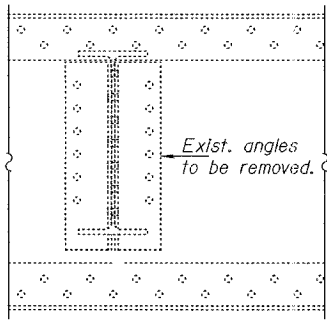


VIEW B-B

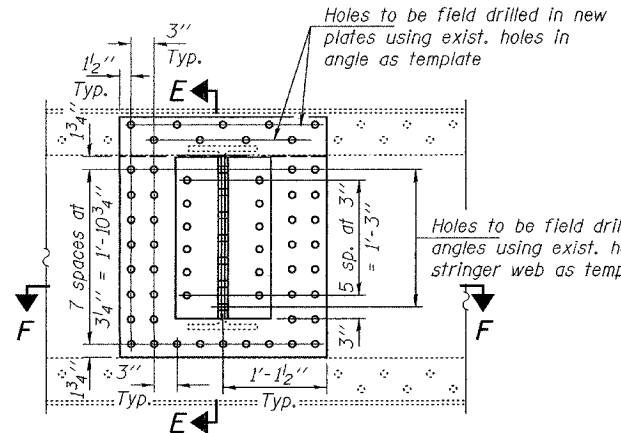


CRACK ARRESTOR HOLE DETAIL

Notes:  
Locate crack tip using liquid dye penetrant or magnetic particle testing. Drill  $\frac{13}{16}$ " min.  $\phi$  crack arrestor hole at the crack tip. After crack arrestor hole has been drilled, dye penetrant or magnetic particle testing shall be used to verify that the drilled hole has captured the crack tip. Cost shall be included with Structural Steel Repair.

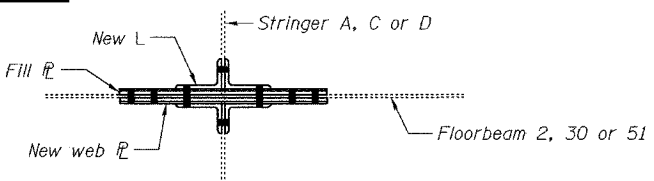


ELEVATION (Existing)



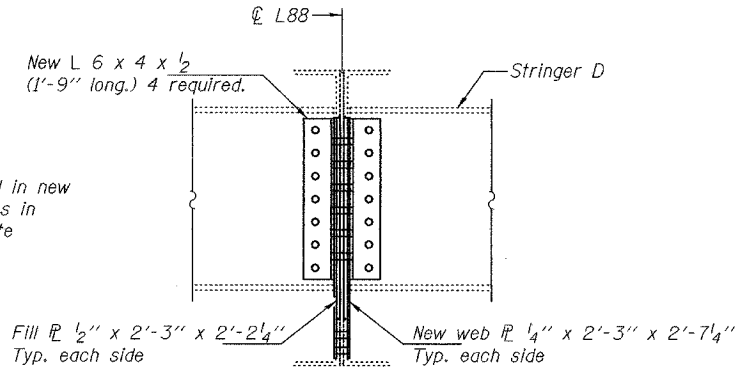
REPAIR 9

ELEVATION (Proposed)



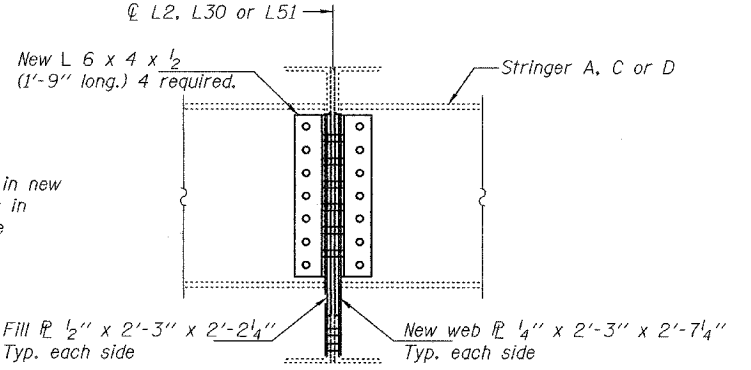
SECTION F-F

Floorbeam 2, Stringer D  
Floorbeam 30, Stringer C  
Floorbeam 51, Stringer A



SECTION C-C

Note:  
Temporary shoring & cribbing of stringer end is required.



SECTION E-E

Note:  
Temporary shoring & cribbing of stringer end is required.

DESIGNED	DAB
CHECKED	JSB
DRAWN	ballva
CHECKED	DAB JSB

MARCH 14, 2005

EXAMINED *John A. Morris*  
ENGINEER OF STRUCTURAL SERVICES

PASSED *Ralph E. Anderson*  
ENGINEER OF BRIDGES AND STRUCTURES

BRIDGE REPAIRS  
OLD CAIRO BRIDGE OVER MISSISSIPPI RIVER  
FAS RTE. 944 (US 60 & 62)  
SEC. (138D-BR)1-5  
ALEXANDER COUNTY  
SN 002-0005