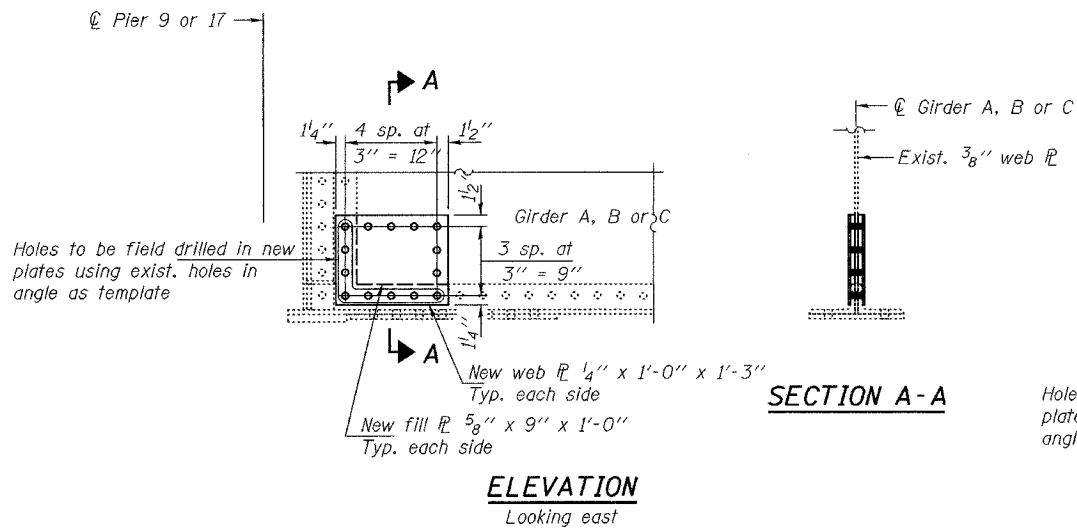


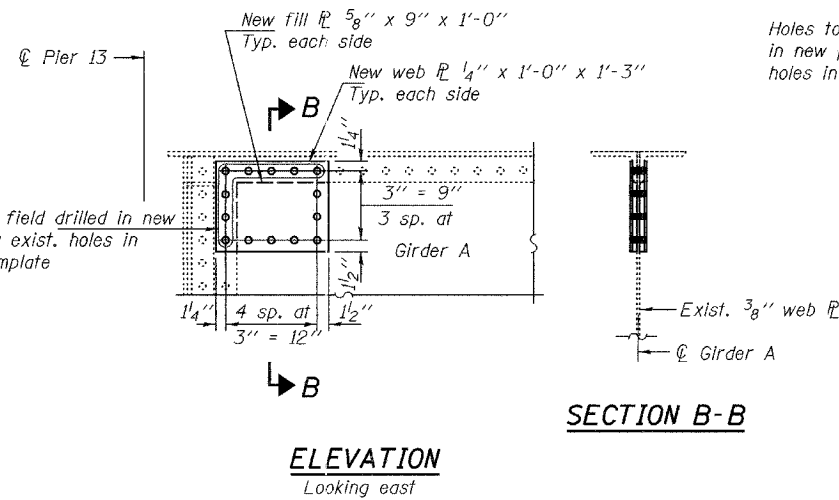
STATE OF ILLINOIS
DEPARTMENT OF TRANSPORTATION

ROUTE NO. FAS 944	SECTION *	COUNTY ALEXANDER	TOTAL SHEETS 10	SHEET NO. 13
FED. ROAD DIST. NO. 7		ILLINOIS	FED. AID PROJECT	

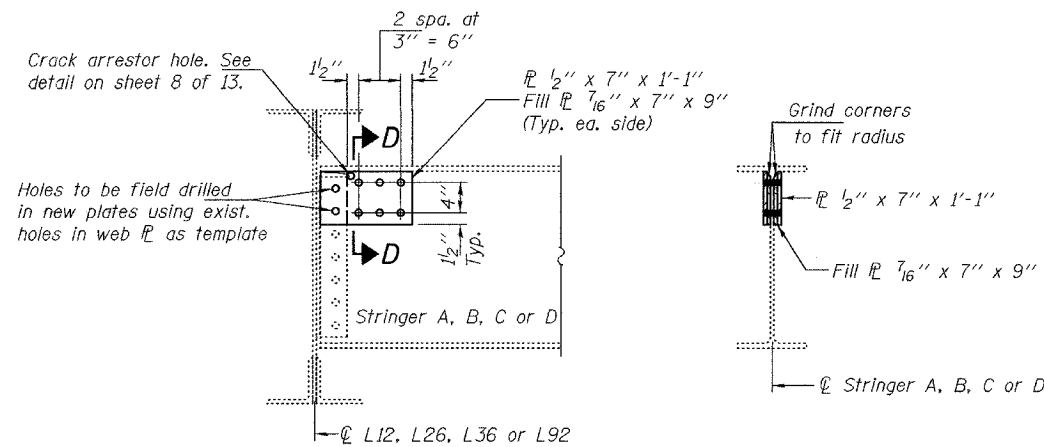
* (138D-BR)1-5 Contract No. 98640



REPAIR 7
Pier 9, Girder B
Pier 17, Girders B & C

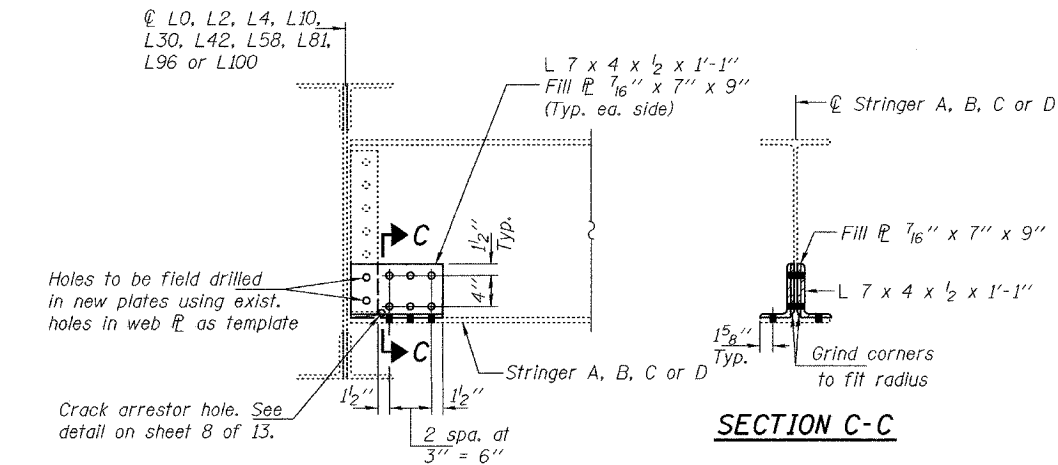


REPAIR 7



REPAIR 7

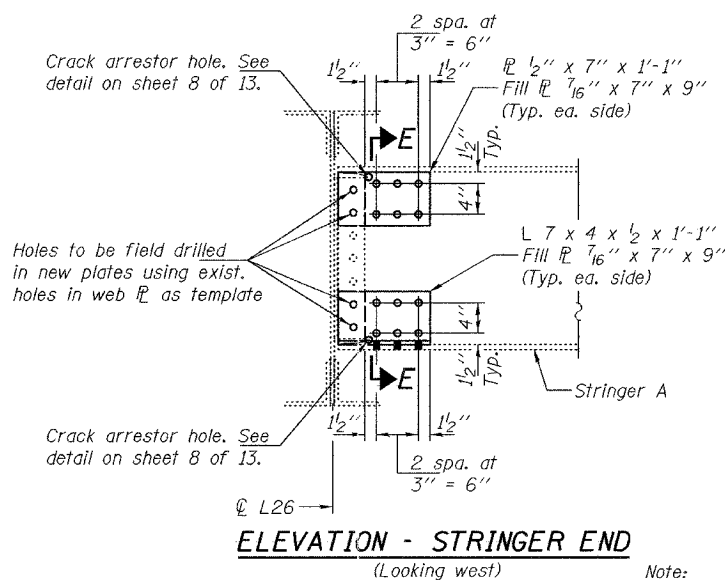
- L12, looking west
L26, Stringer A, looking west
L26, Stringer D, looking east
L36, looking east
L92, looking west
- L12, Stringer B
L26, Stringers A & D
L36, Stringer A
L92 Stringers C & D



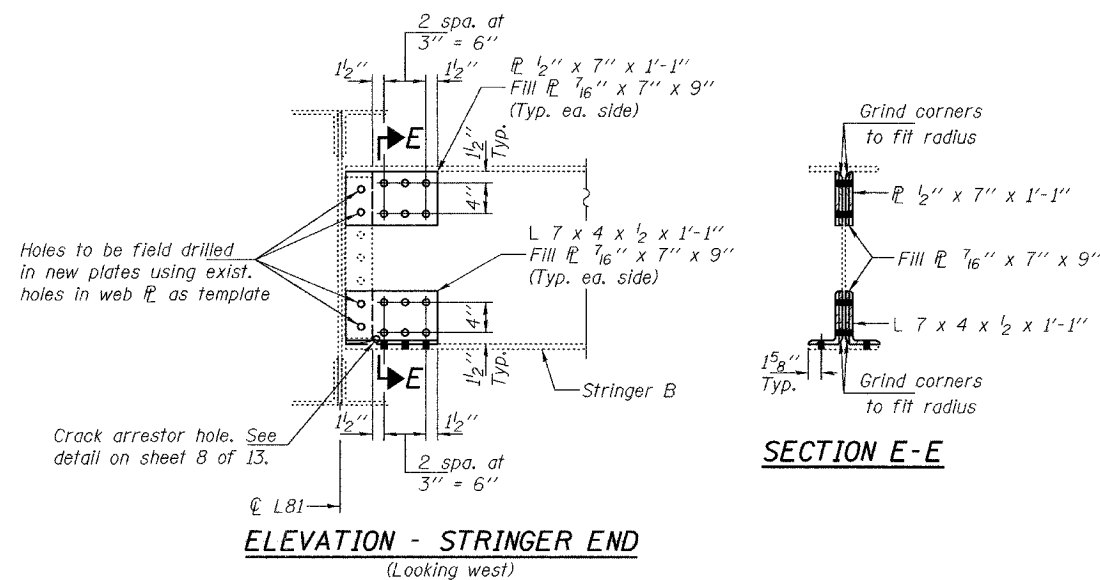
REPAIR 7

- Looking east except as noted:
L4, looking west
L10, Stringer A, looking west
L10, Stringer D, looking east

- L0, Girder A
L2, Stringer D
L4, Stringer A
L10 Stringers A & D
L30, Stringer C
L42, Stringer A
L58, Stringers B & D
L81, Stringer B
L96, Stringer D
L100, Stringer A



REPAIR 7



REPAIR 7

Note:
Temporary shoring & cribbing will not be required provided that upper & lower repairs are not done simultaneously.

DESIGNED	DAB
CHECKED	JSB
DRAWN	balva
CHECKED	DAB JSB

MARCH 14, 2005
EXAMINED *John A. Morris*
ENGINEER OF STRUCTURAL SERVICES
PASSED *Ralph E. Anderson*
ENGINEER OF BRIDGES AND STRUCTURES

BRIDGE REPAIRS
OLD CAIRO BRIDGE OVER MISSISSIPPI RIVER
FAS RTE. 944 (US 60 & 62)
SEC. (138D-BR)1-5
ALEXANDER COUNTY
SN 002-0005