

SECTION	COUNTY	TOTAL SHEETS	SHEET NO.
00-00010-01-HP	MADISON	12	1
CONTRACT NO. 97239 FEDERAL AID PROJECT			

STATE OF ILLINOIS
DEPARTMENT OF TRANSPORTATION
DIVISION OF HIGHWAYS
PLANS FOR PROPOSED
FEDERAL AID HIGHWAY
VILLAGE OF GODFREY
CLIFTON TERRACE PARK
COMFORT STATION
MEETING OF THE GREAT RIVERS SCENIC BYWAY
FAP 304 (IL ROUTE 100)
SECTION: 00-00010-01-HP
FED. PROJECT: SBIL-000-3 (002)
MADISON COUNTY
C-98-005-01

INDEX OF SHEETS

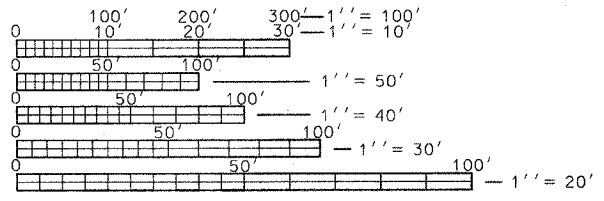
1. COVER SHEET
2. TRAFFIC CONTROL PLAN
3. SITE PLAN
4. BUILDING ELEVATIONS
5. FLOOR PLAN
6. INTERIOR ELEVATIONS
7. FLOOR DRAIN LOCATIONS & BELOW FLOOR PIPING
8. PARTIAL PLUMBING PLANS
9. PLUMBING DETAILS & DIAGRAMS
10. WASTEWATER TREATMENT SYSTEM
11. ELECTRICAL DETAILS & SCHEDULES
12. ELECTRICAL PLAN

SUMMARY OF QUANTITIES

CODE NUMBER	ITEM	UNIT	TOTAL QUANTITIES
Z0011900	COMFORT STATION	EACH	1

STANDARDS

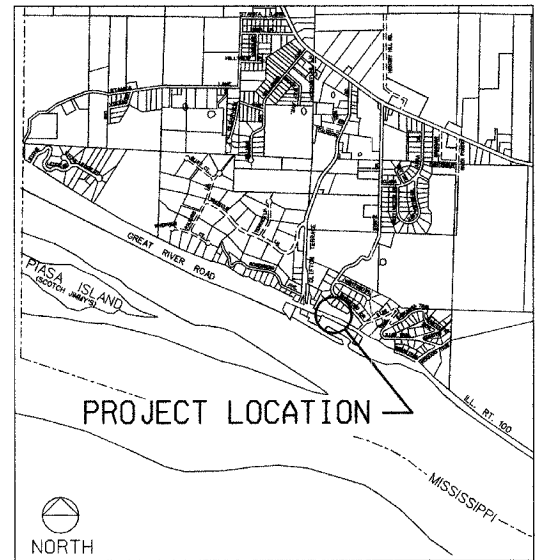
- 280001-02
- 542401
- 701106-01
- 701201-02
- 701801-03
- 702001-05
- 813001-01



FULL SIZE PLANS HAVE BEEN PREPARED USING STANDARD ENGINEERING SCALES. REDUCED SIZED PLANS WILL NOT CONFORM TO STANDARD SCALES. IN MAKING MEASUREMENTS ON REDUCED PLANS, THE ABOVE SCALES MAY BE USED.

J.U.L.I.E.
JOINT UTILITY LOCATION INFORMATION FOR EXCAVATION
1-800-892-0123

CONTRACT NO. 97239



LOCATION MAP
NOT TO SCALE

STATE OF ILLINOIS
DEPARTMENT OF TRANSPORTATION
DIVISION OF HIGHWAYS

APPROVED Feb 10, 2005
Michael G. Champion
LOCAL AGENCY REPRESENTATIVE

PASSED 2-24 2005
Jennifer Christen
DISTRICT ENGINEER OF LOCAL ROADS & STREETS

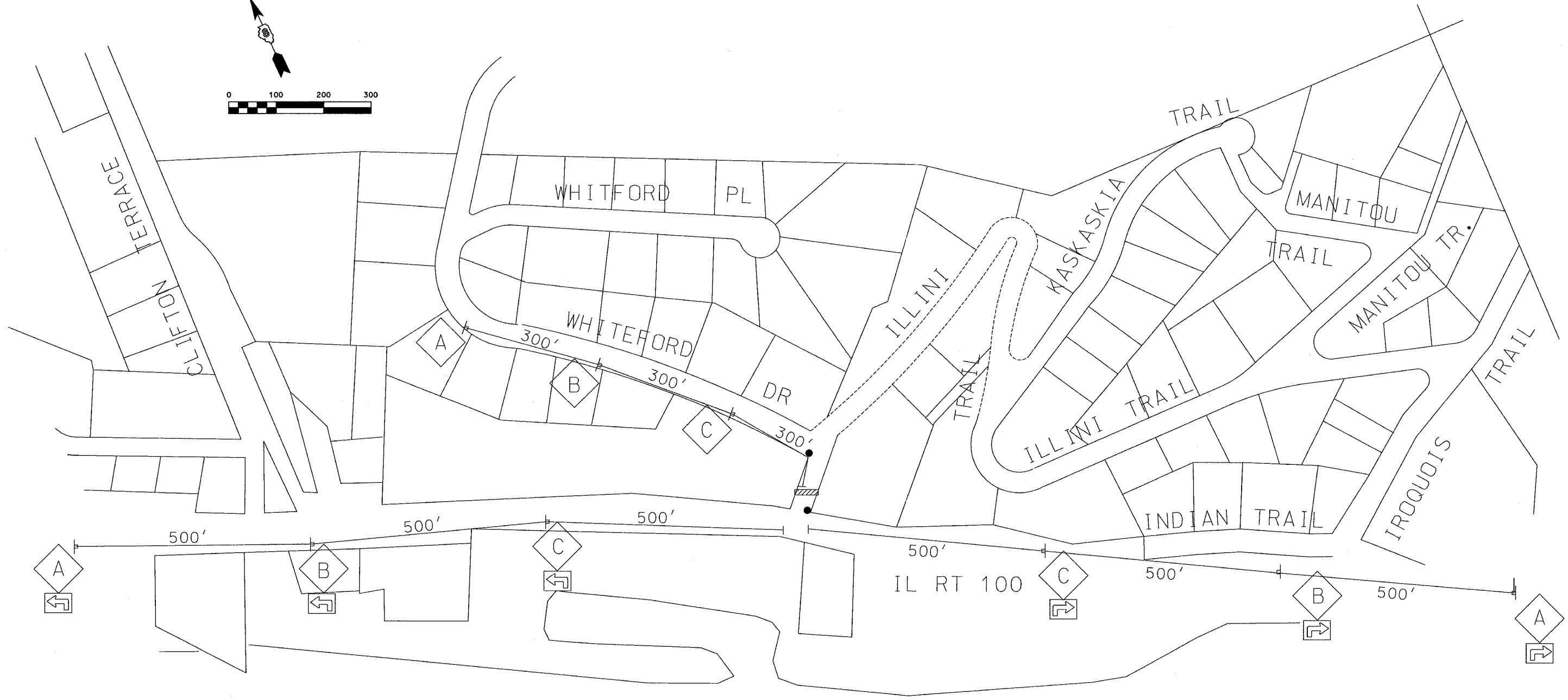
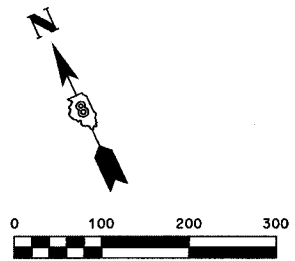
APPROVED 2-24 2005
Mary C. Lamie
MARY C. LAMIE, P.E.
DEPUTY DIRECTOR OF HIGHWAYS,
REGION FIVE ENGINEER



Dennis W. Hartman

DATE SIGNED Feb. 9, 2005
EXPIRATION DATE Nov. 30, 2005

PRINTED BY THE AUTHORITY OF THE STATE OF ILLINOIS



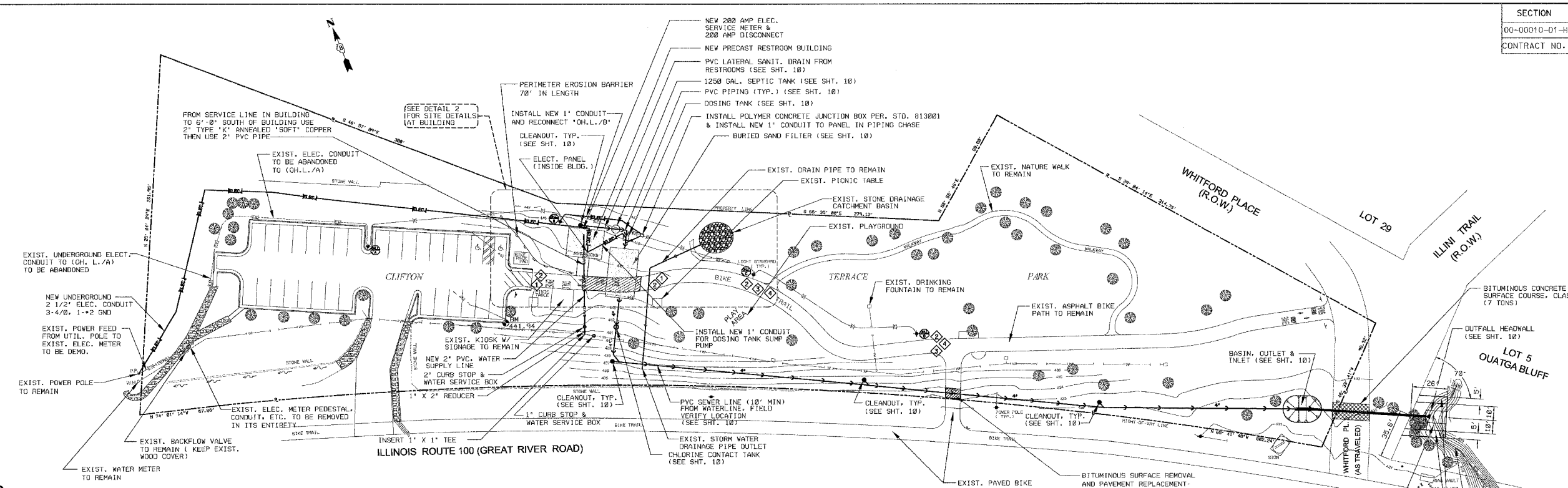
GENERAL NOTES

1. ALL CONSTRUCTION SIGNS SHALL MEET THE REQUIREMENTS OF THE LATEST EDITION OF THE "MANUAL ON UNIFORM TRAFFIC CONTROL DEVICES FOR STREETS AND HIGHWAYS"
2. THIS TRAFFIC CONTROL PLAN SHALL ONLY BE IN EFFECT WHEN WORKING ON WHITFORD PLACE

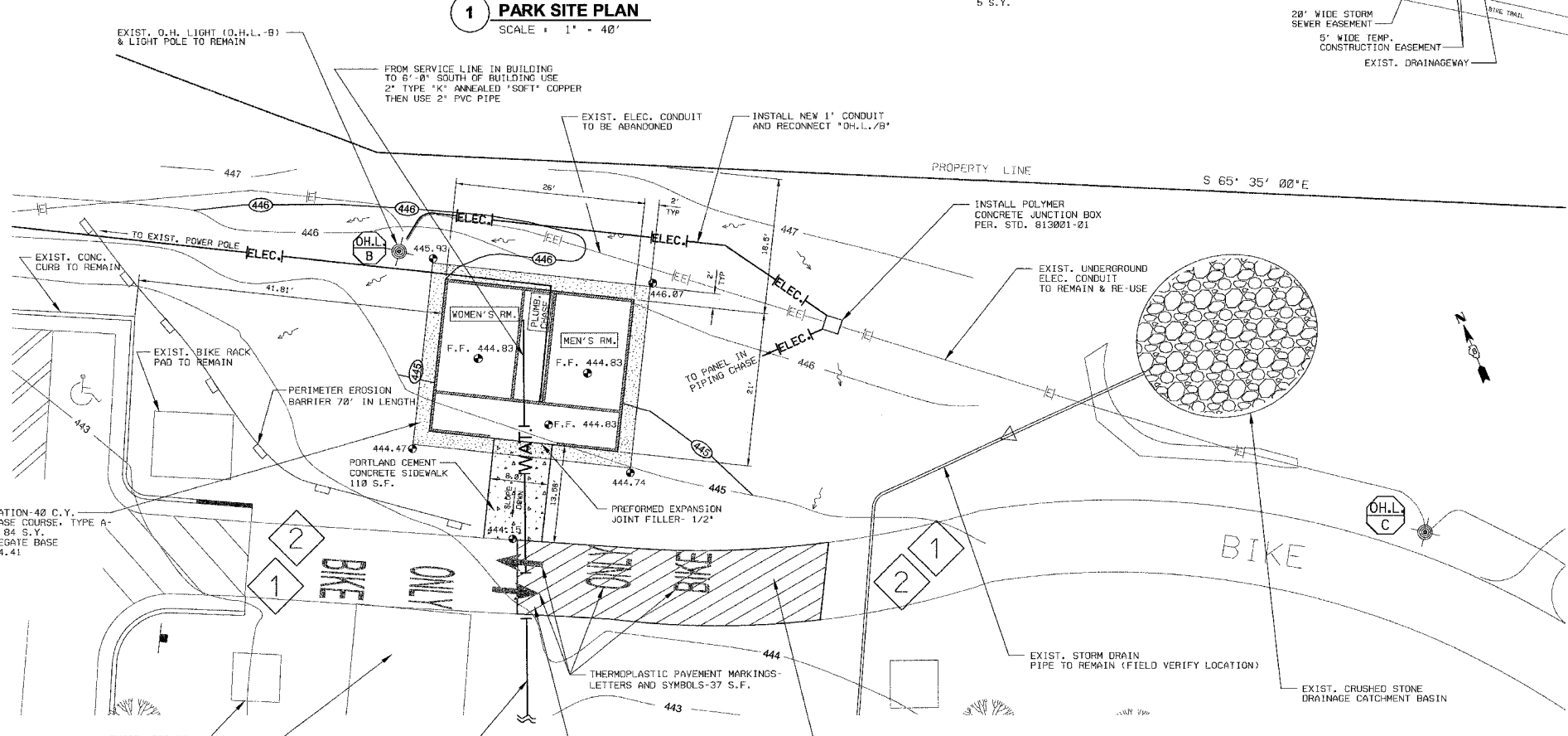
LEGEND

- WORK AREA
- SIGN
- ROAD WORK AHEAD W21-4101-4B
- ONE LANE ROAD AHEAD W20-4101-4B
- FLAGGER W20-110101-4B
- BLACK ARROW ON ORANGE BACKGROUND
- FLAGGER WITH TRAFFIC CONTROL SIGN

REVISIONS		ILLINOIS DEPARTMENT OF TRANSPORTATION
NAME	DATE	
		CLIFTON TERRACE PARK COMFORT STATION TRAFFIC CONTROL PLAN
SCALE:	VERT. 1" = 100' HORIZ. 1" = 100'	DRAWN BY DWH
DATE	FEBRUARY 9, 2005	CHECKED BY DWH



1 PARK SITE PLAN
SCALE: 1" = 40'



2 BUILDING SITE PLAN
SCALE: 1" = 10'

LEGEND

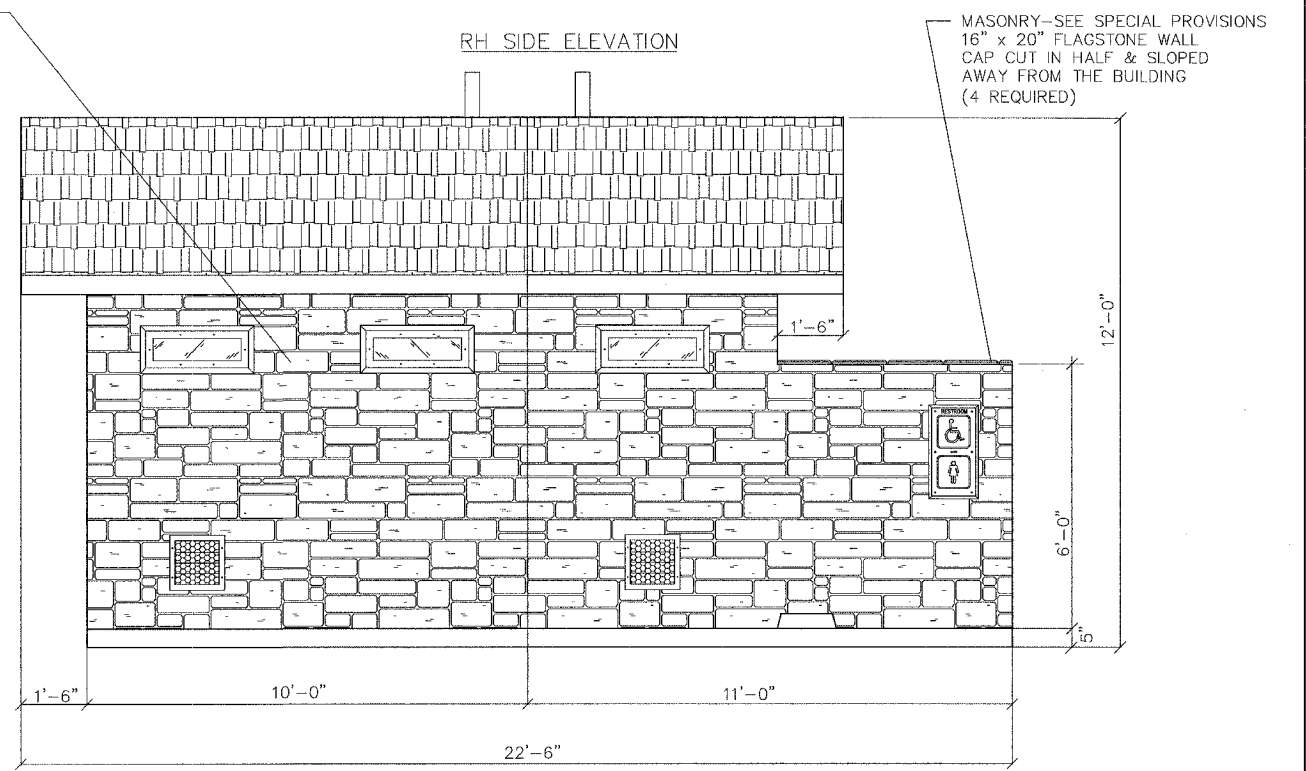
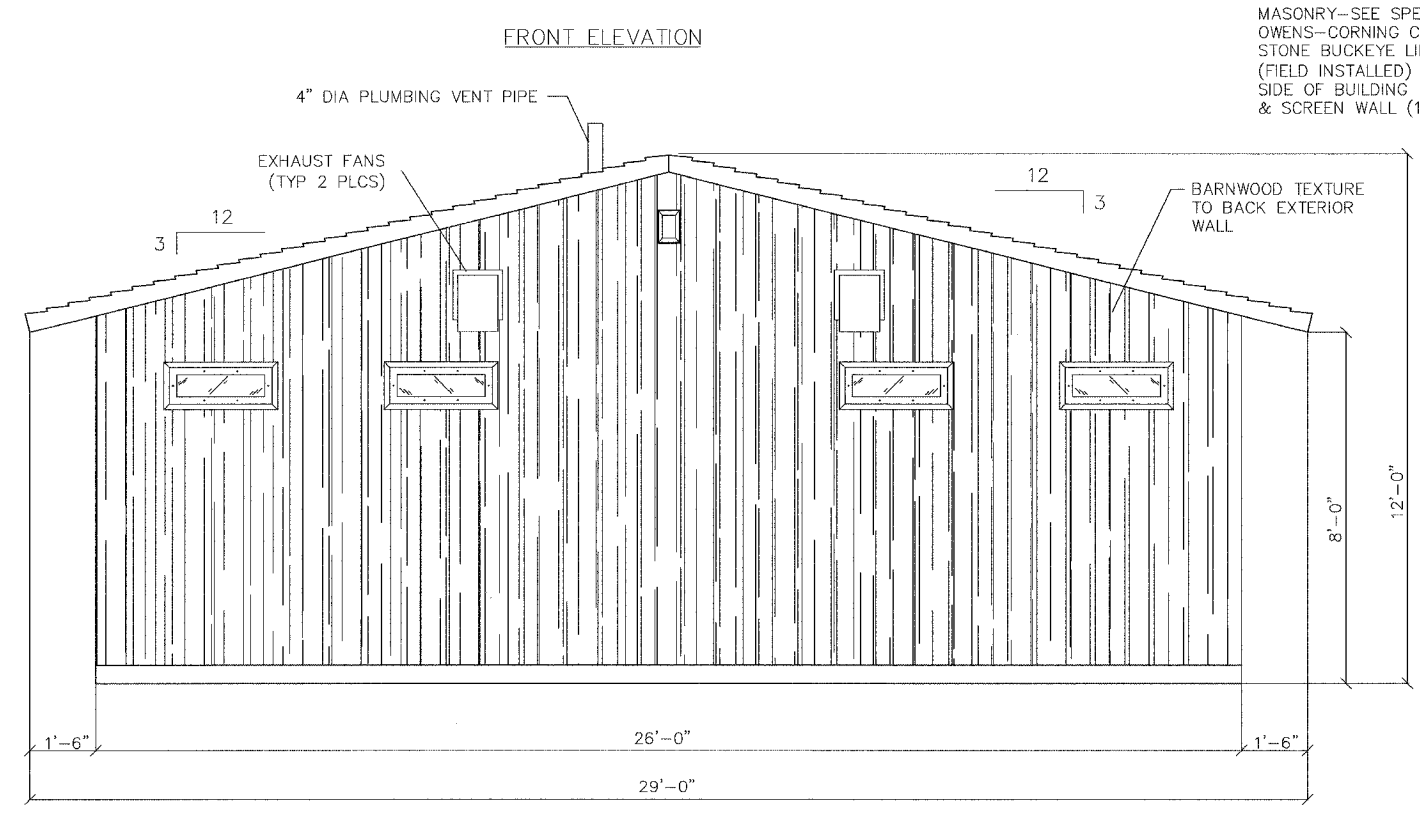
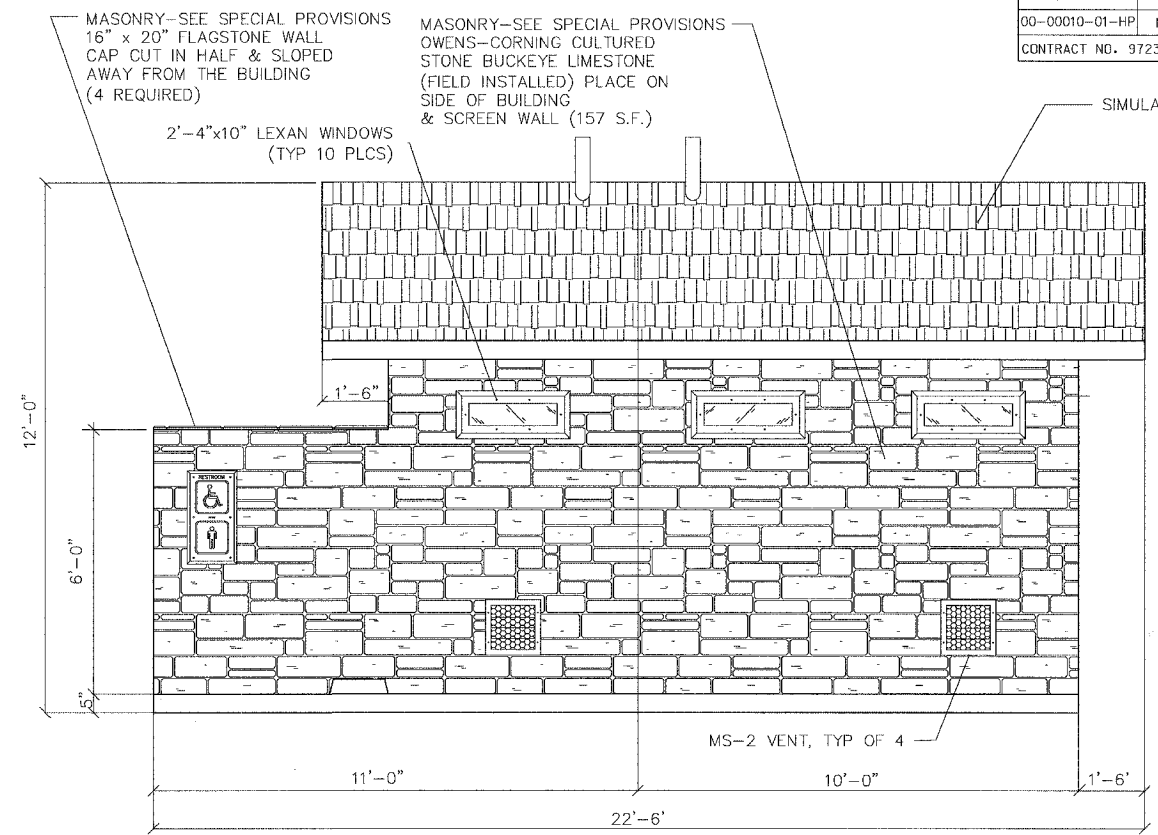
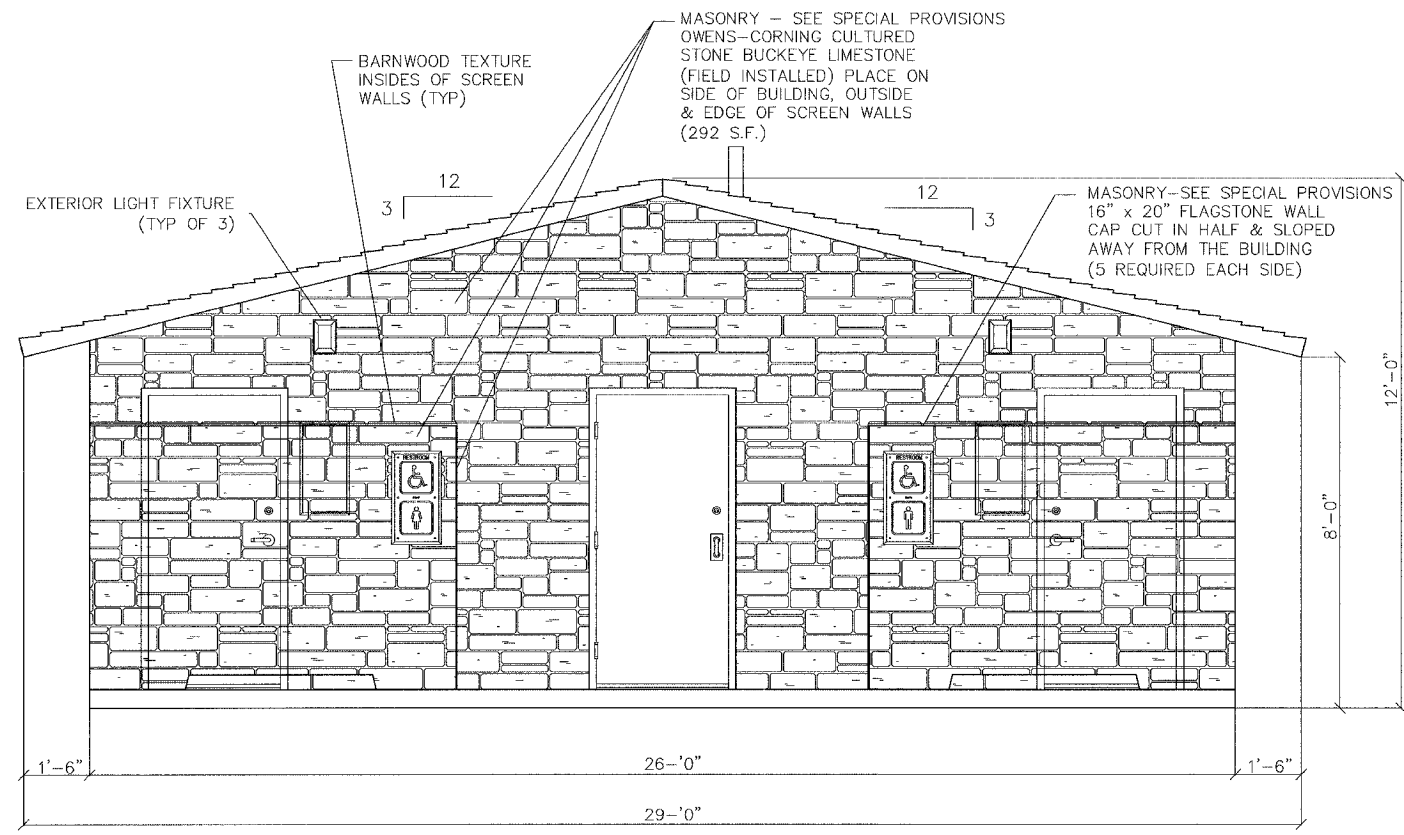
- SURFACE WATER DRAIN (EXISTING)
- WATER LINE (EXISTING)
- WATER LINE (EXISTING)
- BURIED ELECTRIC LINE (EXISTING)
- BURIED ELECTRIC LINE (EXISTING) TO BE ABANDONED
- BURIED ELECTRIC LINE (EXISTING) TO BE DEMOLISH
- BURIED ELECTRIC LINE (NEW)
- PVC SEWER
- CLEANOUT
- CHLORINE CONTACT TANK
- SDR 26 PVC CULVERT W/METAL END SECTIONS (SEE NOTE 3)
- GROUND CONTOUR (EXISTING)
- GROUND CONTOUR (NEW)
- SPOT ELEVATION'S
- PROPERTY LINE
- EXISTING TREES
- EXISTING SITE OVERHEAD LIGHTS
- PORTLAND CEMENT CONCRETE SIDEWALK
- AGGREGATE BASE COURSE, TYPE A
- BITUMINOUS SURFACE REMOVAL AND PAVEMENT REPLACEMENT-SURFACE COURSE
- BITUMINOUS CONCRETE SURFACE COURSE
- WATER FLOW (SWALE)
- PERIMETER EROSION BARRIER

TRAFFIC CONTROL SIGNAGE

- TYPE 3 BARRICADE
- SIDEWALK CLOSED
- TYPE 1 BARRICADE
- DETOUR LEFT

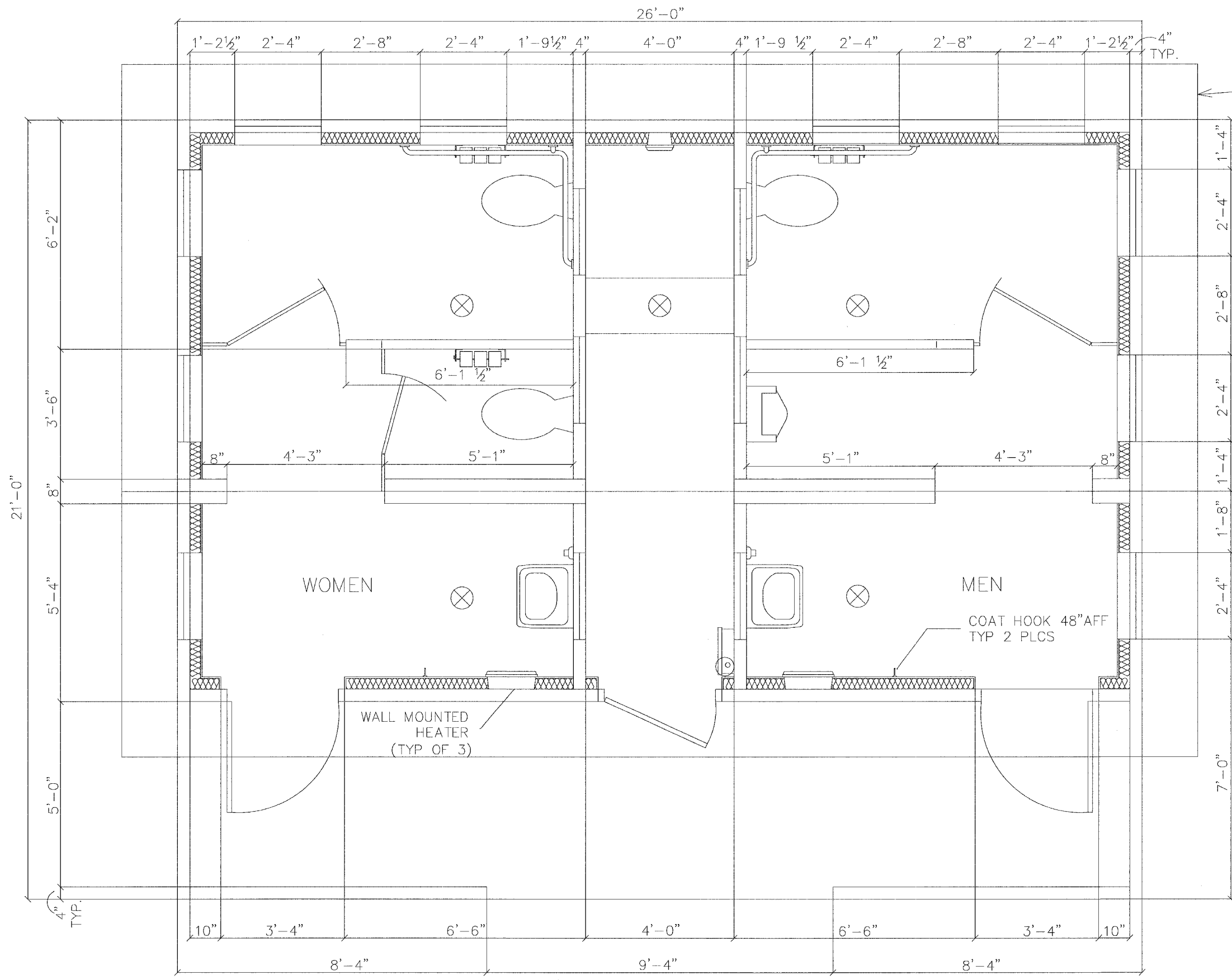
REVISIONS		ILLINOIS DEPARTMENT OF TRANSPORTATION
NAME	DATE	
		CLIFTON TERRACE PARK COMFORT STATION SITE PLAN
SCALE: VERT. AS NOTED	DATE: FEBRUARY 9, 2005	DRAWN BY: JCU
		CHECKED BY: DWH

SECTION	COUNTY	TOTAL SHEETS	SHEET NO.
00-00010-01-HP	MADISON	12	4
CONTRACT NO. 97239		FEDERAL AID PROJECT	



NOTE: PRODUCT OR BRAND NAMES ARE SHOWN TO ESTABLISH MINIMUM QUALITY REQUIREMENTS, PRODUCTS OR BRANDS OF EQUAL QUALITY ARE ACCEPTABLE.

REVISIONS		ILLINOIS DEPARTMENT OF TRANSPORTATION	
NAME	DATE		
		CLIFTON TERRACE PARK	
		COMFORT STATION	
		BUILDING ELEVATIONS	
		SCALE: VERT. 1/2" = 1' - 0"	DRAWN BY: JCU
		HORIZ. 1/2" = 1' - 0"	CHECKED BY: DWJ
		DATE: FEBRUARY 9, 2005	



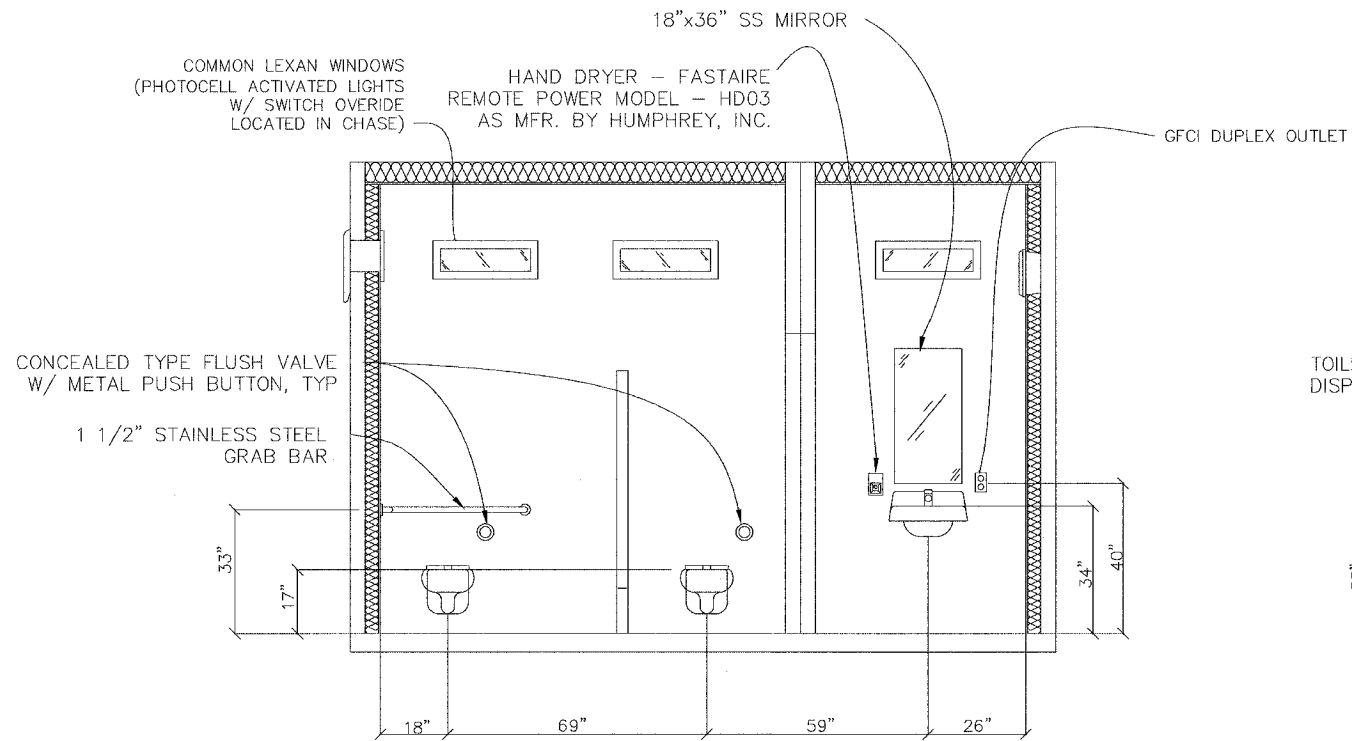
ROOF LINE ABOVE

NOTE: PLUMBING & ELECTRICAL COMPONENTS ARE SHOWN FOR GENERAL ARRANGEMENT ONLY. CONTRACTOR SHALL SUBMIT DETAILED PLANS FOR APPROVAL PRIOR TO ORDERING BUILDING.

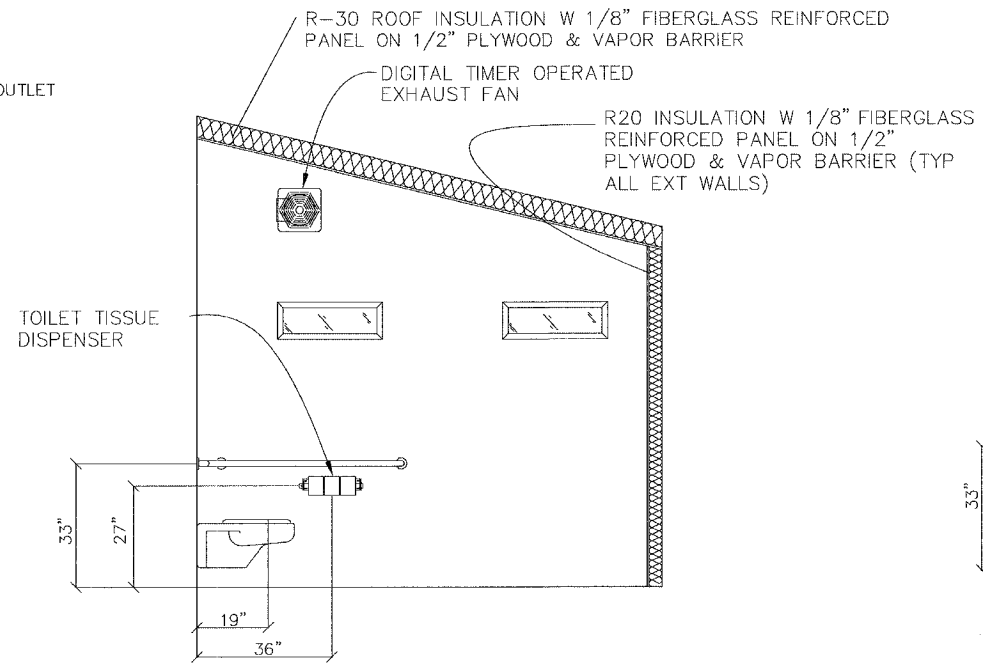
PRODUCT OR BRAND NAMES ARE SHOWN TO ESTABLISH MINIMUM QUALITY REQUIREMENTS, PRODUCTS OR BRANDS OF EQUAL QUALITY ARE ACCEPTABLE.

REVISIONS		ILLINOIS DEPARTMENT OF TRANSPORTATION	
NAME	DATE		
		CLIFTON TERRACE PARK COMFORT STATION FLOOR PLAN	
SCALE: VERT. 3/8" = 1'-0"		DRAWN BY	DWH
HORIZ. 3/8" = 1'-0"		CHECKED BY	DWH
DATE		FEBRUARY 9, 2005	

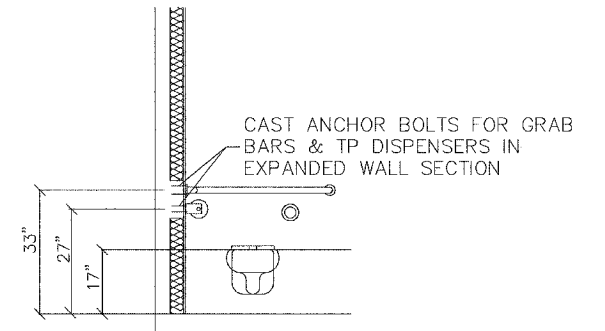
SECTION	COUNTY	TOTAL SHEETS	SHEET NO.
00-00010-01-HP	MADISON	12	6
CONTRACT NO. 97239		FEDERAL AID PROJECT	



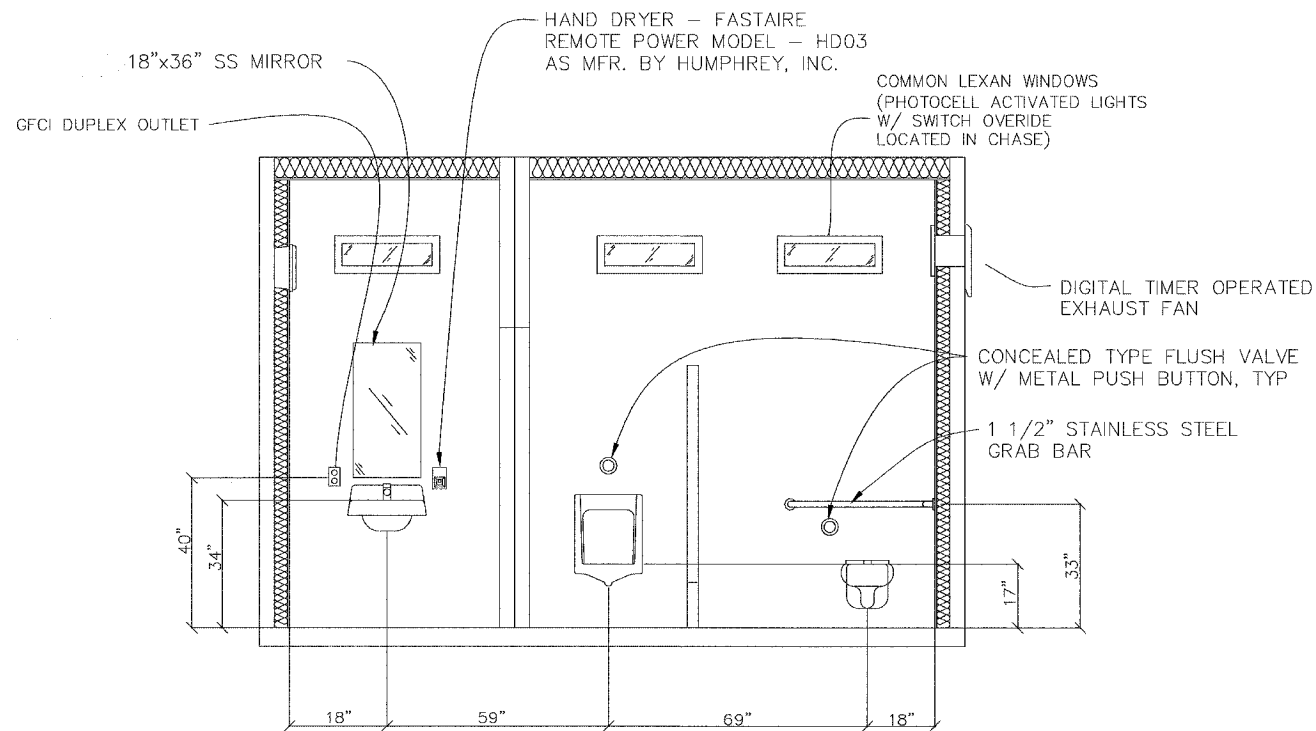
INTERIOR ELEVATION - WOMEN'S RESTROOM



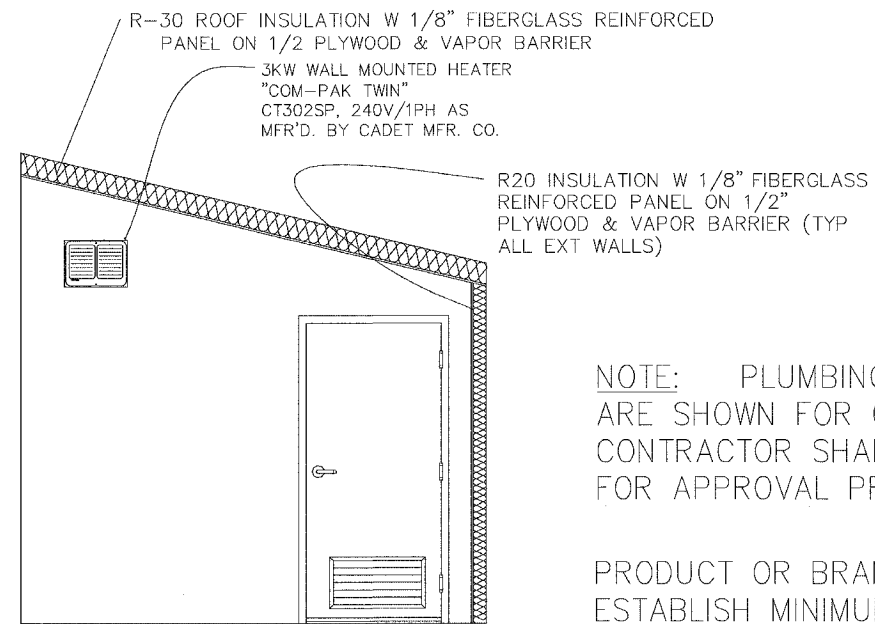
INTERIOR ELEVATION - MEN'S RESTROOM
WOMENS OPPOSITE HAND



MOUNTING DETAIL



INTERIOR ELEVATION - MEN'S RESTROOM

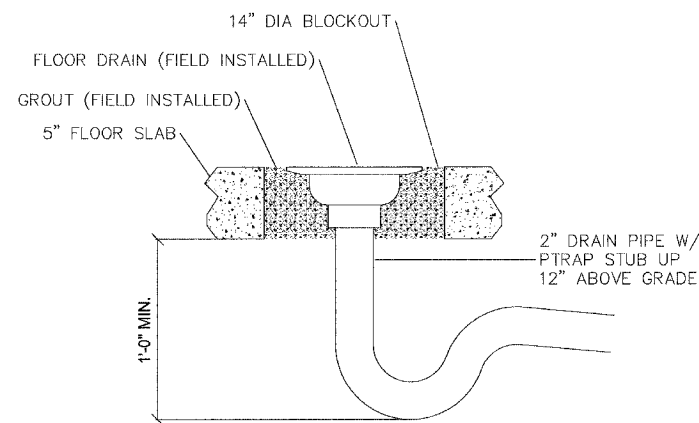
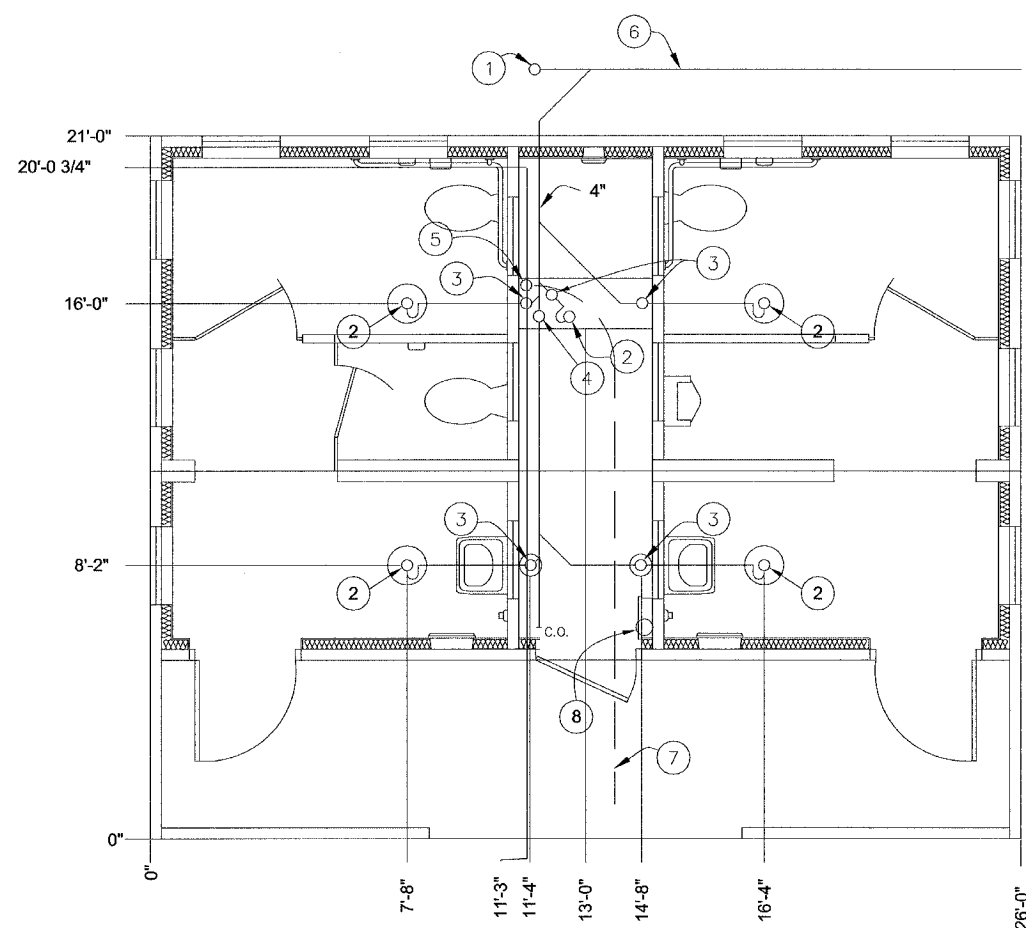


INTERIOR ELEVATION - WOMEN'S RESTROOM
MENS OPPOSITE HAND

NOTE: PLUMBING & ELECTRICAL COMPONENTS ARE SHOWN FOR GENERAL ARRANGEMENT ONLY. CONTRACTOR SHALL SUBMIT DETAILED PLANS FOR APPROVAL PRIOR TO ORDERING BUILDING.

PRODUCT OR BRAND NAMES ARE SHOWN TO ESTABLISH MINIMUM QUALITY REQUIREMENTS, PRODUCTS OR BRANDS OF EQUAL QUALITY ARE ACCEPTABLE.

REVISIONS		ILLINOIS DEPARTMENT OF TRANSPORTATION
NAME	DATE	
		CLIFTON TERRACE PARK COMFORT STATION INTERIOR ELEVATIONS
SCALE: VERT. 1/2" = 1'-0"		DRAWN BY DWH
DATE: FEBRUARY 9, 2005		



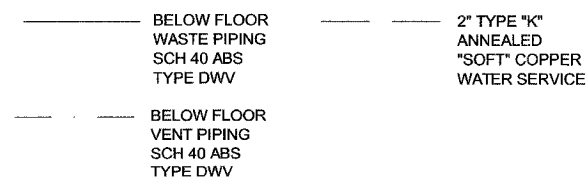
FLOOR DRAIN DETAIL

BELOW FLOOR PIPING - KEY NOTES

1. 4" CLEAN OUT TO GRADE.
2. 2" FLOOR DRAIN. (14" DIA BLOCKOUT)
3. 2" VENT PIPES EXTENDED 12" ABOVE FINISHED FLOOR LEVEL, PROVIDE TEST PLUG. (8" DIA BLOCKOUT)
4. 4" WASTE PIPE EXTENDED 12" ABOVE FINISHED FLOOR LEVEL, PROVIDE TEST PLUG. (1'-6" x 4'-0" BLOCKOUT)
5. 2" TYPE K ANNEALED "SOFT" COPPER WATER SERVICE EXTENDED 12" ABOVE FINISHED FLOOR LEVEL, PROVIDE CAP AT END. (1'-6" x 4'-0" BLOCKOUT)
6. 3'-6" MIN. BURY.
7. 3'-6" MIN. BURY, PROVIDE WITH TRACER WIRE CONNECTED MIN. 6" ABOVE FLOOR IN BUILDING TO NEW CURB STOP.
8. ELECTRICAL STUB UP, (6" DIA BLOCKOUT)

FLOOR DRAIN BLOCKOUTS & BELOW FLOOR PIPING
3/8"=1'-0"

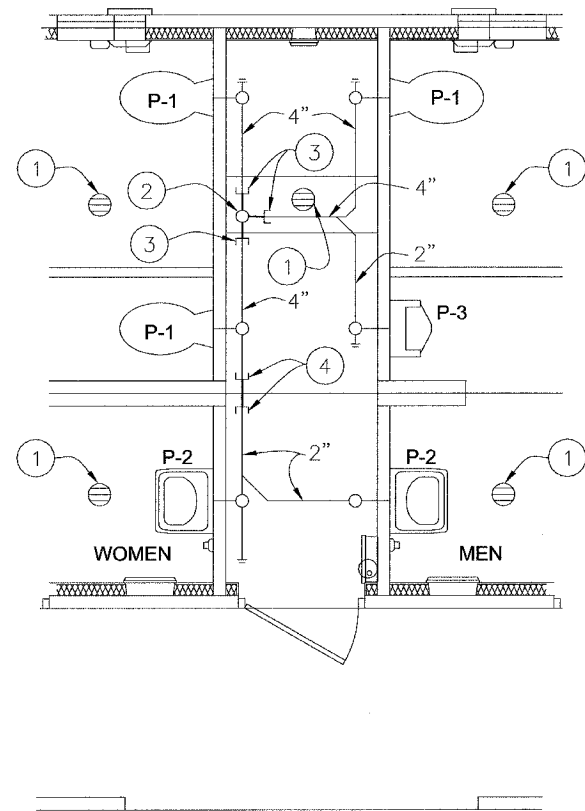
PIPING LEGEND



NOTE: PLUMBING COMPONENTS ARE SHOWN FOR GENERAL ARRANGMENT ONLY. CONTRACTOR SHALL SUBMIT DETAILED PLANS FOR APPROVAL PRIOR TO ORDERING BUILDING.

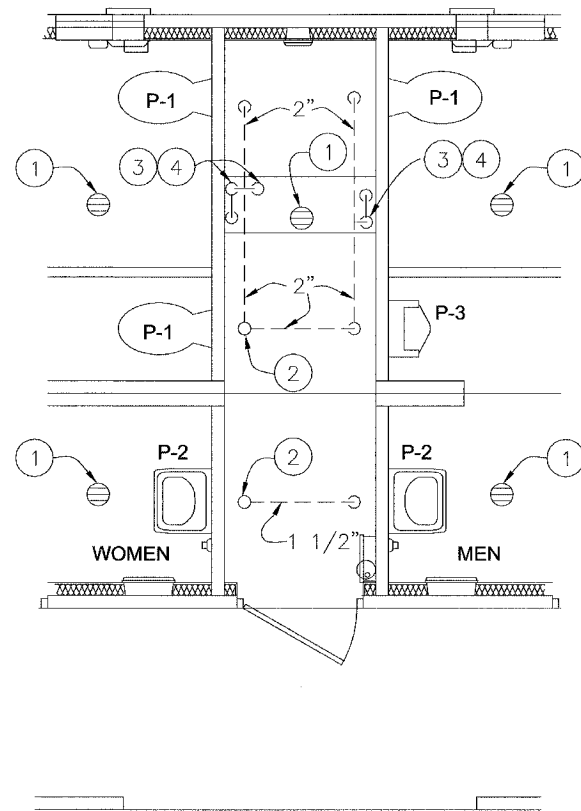
PRODUCT OR BRAND NAMES AR SHOWN TO ESTABLISH MINIMUM QUALITY REQUIREMENT, PRODUCTS OR BRANDS OF EQUAL QUALITY ARE ACCEPTABLE.

REVISIONS		ILLINOIS DEPARTMENT OF TRANSPORTATION	
NAME	DATE		
		CLIFTON TERRACE PARK COMFORT STATION FLOOR DRAIN LOCATIONS & BELOW FLOOR PIPING	
SCALE: VERT. 3/8" = 1'-0"		DRAWN BY	DWH
HORIZ. 3/8" = 1'-0"		CHECKED BY	DWH
DATE		FEBRUARY 9, 2005	



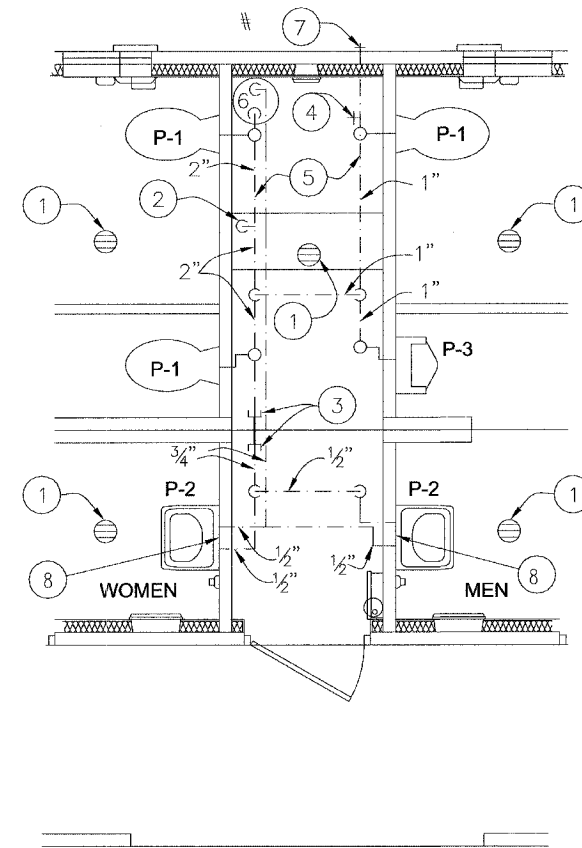
PARTIAL PLAN - WASTE PIPE

3/8"=1'-0"



PARTIAL PLAN - VENT PIPE

3/8"=1'-0"



PARTIAL PLAN - HOT & COLD WATER PIPE

3/8"=1'-0"

WASTE PIPING - KEY NOTES

- 2" FLOOR DRAIN, FIELD INSTALLED
- 4" WASTE THROUGH FLOOR, FIELD INSTALLED
- PROVIDE TEST PLUG IN END OF WASTE PIPE. CONTINUATION OF PIPING IS FIELD INSTALLED
- CAPPED 2" WASTE CONNECTION BETWEEN UNITS

VENT PIPING - KEY NOTES

- 2" FLOOR DRAIN, FIELD INSTALLED
- 4" VENT THROUGH ROOF.
- 2" VENT WITH TEST PLUG.
- FIELD INSTALLED 2" VENT PIPING FROM FLOOR DRAINS.

WATER PIPING - KEY NOTES

- 2" FLOOR DRAIN, FIELD INSTALLED
- FIELD INSTALLED 2" WATER SUPPLY WITH SHUT-OFF VALVE NEAR FLOOR.
- 3/4" CAPPED CW LINE. CONNECTION BETWEEN SIDES IS TO BE FIELD INSTALLED.
- 3/4" HOSE BIBB WITH VACUUM BREAKER AND WHEEL HANDLE
- WATER PIPING ALONG WALL
- 30 GAL. HOT WATER HEATER
- 3/4" WALL HYDRANT WITH VACUUM BREAKER AND TEE KEY
- HOT & COLD WALL FAUCET WITH VACUUM BREAKER AND TEE KEY BELOW LAVATORY

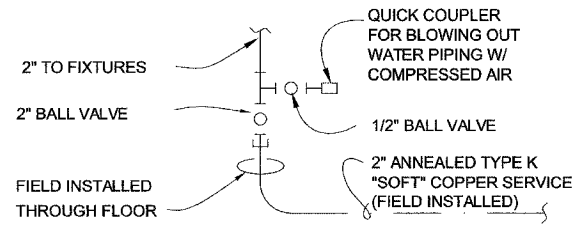
NOTE: PLUMBING COMPONENTS ARE SHOWN FOR GENERAL ARRANGEMENT ONLY. CONTRACTOR SHALL SUBMIT DETAILED PLANS FOR APPROVAL PRIOR TO ORDERING BUILDING

PRODUCT OR BRAND NAMES ARE SHOWN TO ESTABLISH MINIMUM QUALITY REQUIREMENT, PRODUCTS OR BRANDS OF EQUAL QUALITY ARE ACCEPTABLE.

PIPING LEGEND

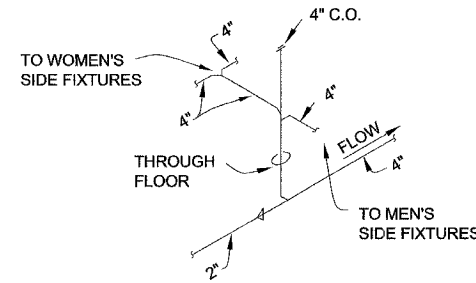
----- WATER	----- WASTE PIPE: PVC, ASTM D2665, SCH 40 OR ABS, ASTM D2661, SCH 40
----- VENT PIPING SCH 40 ABS TYPE DWV	----- FIELD PIPING

REVISIONS		ILLINOIS DEPARTMENT OF TRANSPORTATION	
NAME	DATE		
		CLIFTON TERRACE PARK COMFORT STATION PARTIAL PLUMBING PLANS	
SCALE: VERT. 3/8" = 1'-0"		DRAWN BY DWH	
HORIZ. 3/8" = 1'-0"		CHECKED BY DWH	
DATE FEBRUARY 9, 2005			



WATER SERVICE DETAIL

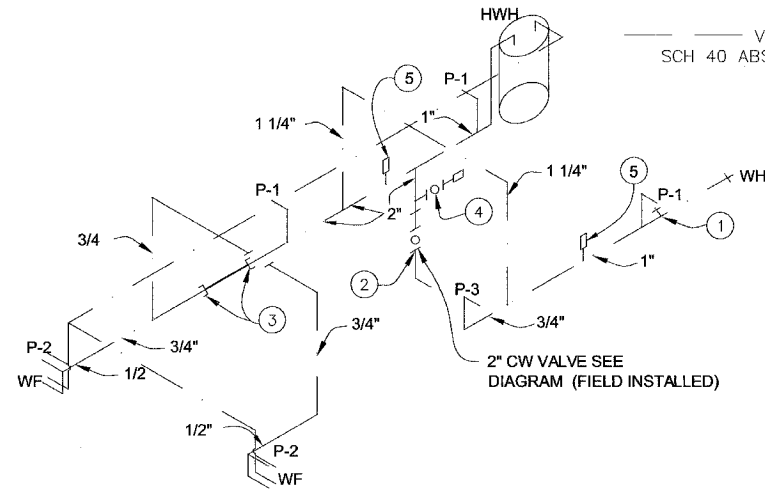
NTS



DETAIL OF FIELD INSTALLED WASTE CONNECTION

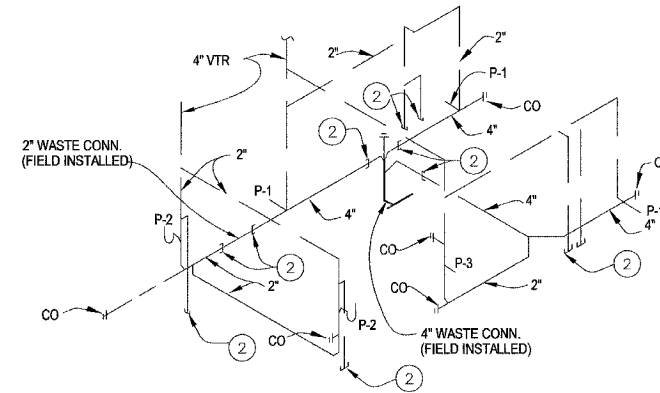
NTS

PIPING LEGEND



WATER PIPING RISER DIAGRAM

NTS



PLUMBING RISER DIAGRAM

NTS

PLUMBING FIXTURE SCHEDULE														
SYM	DESCRIPTION	MANUFACTURER	MODEL #	CARRIER	FLUSH VALVE/FAUCET	SEAT	TRAP	SUPPLIES	DRAIN	HW	CW	WASTE	VENT	NOTES
P-1	WATER CLOSET	ELJER "SIGNATURE"	111-2110	JAY R. SMITH 210-R/L-Y	SLOAN "ROYAL" #952-1.6 L-3 W=4"	ELJER 1240355	-	-	-	-	1"	4"	2"	1,3
P-2	LAVATORY	ELJER "BUCKNELL"	052-0174	ELJER WALL HGR.	CHICAGO FAUCETS 802-665CP	-	OFFSET 1 1/2"x17GA.CP	BRASSWORKS "SPEEDWAY" #ST-1912-K	CHROME STRAINER	1/2"	1/2"	2	2	2
P-3	URINAL	GERBER "HAMILTON"	27-775	GERBER WALL HGR	SLOAN "ROYAL" #995-1-FW L-3 W=4"	-	-	-	-	-	3/4"	2"	2"	1
HWH	HOT WATER HEATER	RUUD	PE2S-30-2							3/4"	3/4"			
WF	WALL FAUCET	WOOFORD	22C		LOOSE TEE KEY			ASSE 1011 APPROVED VACUUM BREAKER		3/4"	3/4"			
WH	WALL HYDRANT	WOOFORD	66C		LOOSE TEE KEY			NIDEL MODEL 34A VACUUM BREAKER		3/4"				

NOTES: 1. OFFSET FLUSH VALVE TAILPIECE PER ADA, RIGHT OR LEFT HAND, AS REQUIRED. PROVIDE FLUSH VALVE FOR 4" WALL THICKNESS.
2. 4" WALL THICKNESS
3. MOUNT RIM OF P-1 AT 17" ABOVE FLOOR.
4. PROVIDE SHUT-OFF VALVE FOR WATER CLOSET (CW), URINAL (CW), LAVATORY (CW & HW), HOSE BIB (CW), WALL FAUCE (CW & HW) AND WALL HYDRANT (CW)

KEY NOTES

- 3/4" HOSE BIBB WITH VACUUM BREAKER & WHEEL HANDLE
- TO THIS POINT BY BUILDING MANUFACTURER
- 3/4" PLUGGED CW LINE TO THIS POINT, BY BUILDING MANUFACTURER 3/4" CW BETWEEN THESE POINTS, FIELD INSTALLED
- 1/2" AIR QUICK CONNECTION W/ BALL VALVE FOR BLOWING OUT WATER PIPING.
- WATER HAMMER ARRESTOR SIOUX CHIEF HYDRA-RESTOR #654-C OR EQUAL

NOTE: PLUMBING COMPONENTS ARE SHOWN FOR GENERAL ARRANGEMENT ONLY. CONTRACTOR SHALL SUBMIT DETAILED PLANS FOR APPROVAL PRIOR TO ORDERING BUILDING.

PRODUCT OR BRAND NAMES ARE SHOWN TO ESTABLISH MINIMUM QUALITY REQUIREMENT, PRODUCTS OR BRANDS OF EQUAL QUALITY ARE ACCEPTABLE.

REVISIONS		ILLINOIS DEPARTMENT OF TRANSPORTATION	
NAME	DATE		
		CLIFTON TERRACE PARK COMFORT STATION PLUMBING DETAILS & DIAGRAMS	
SCALE: VERT. NTS		DRAWN BY DWH	
DATE FEBRUARY 9, 2005		CHECKED BY DWH	

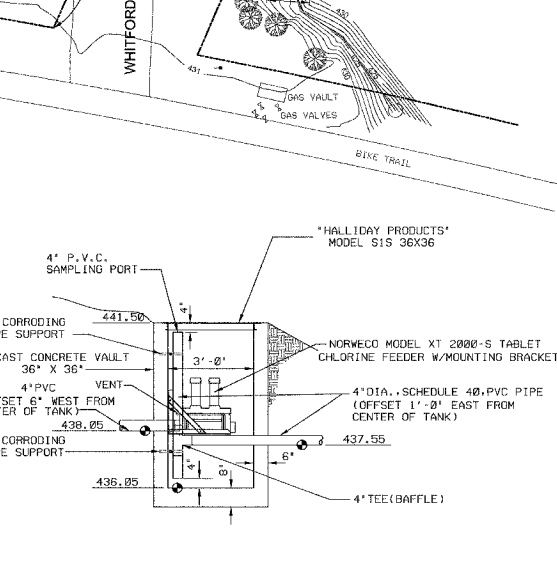
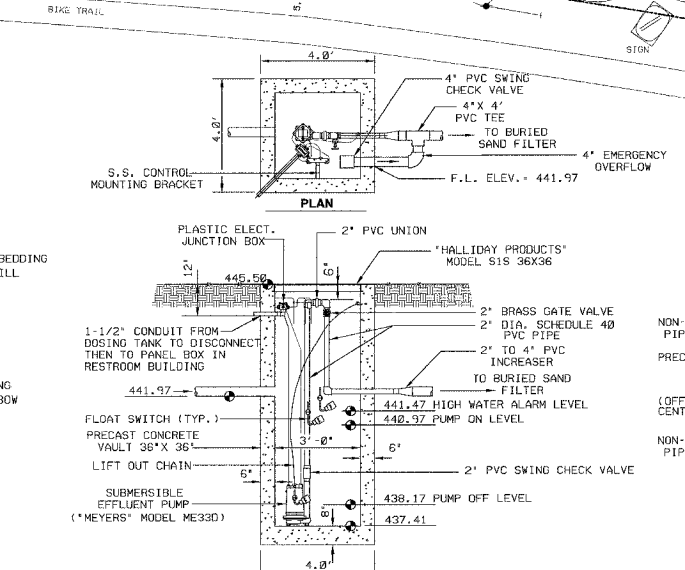
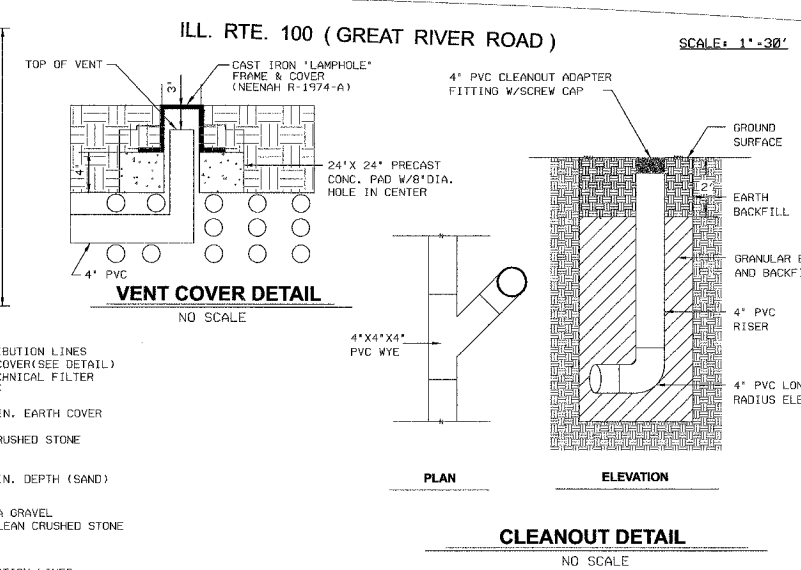
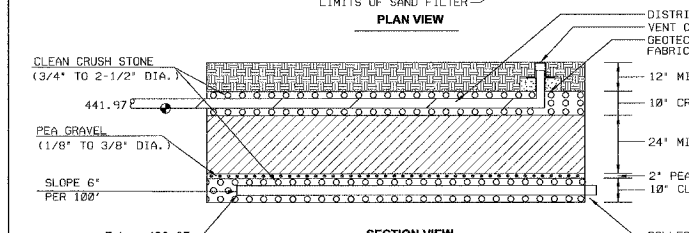
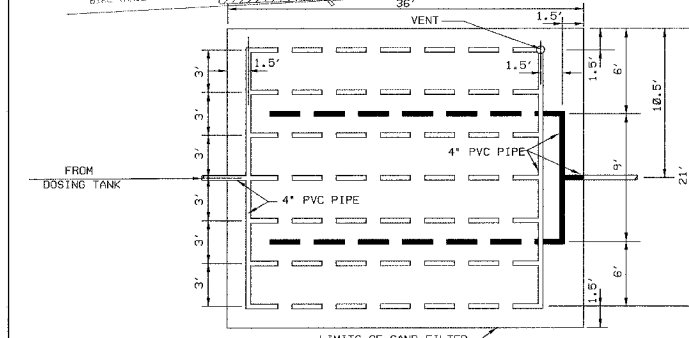
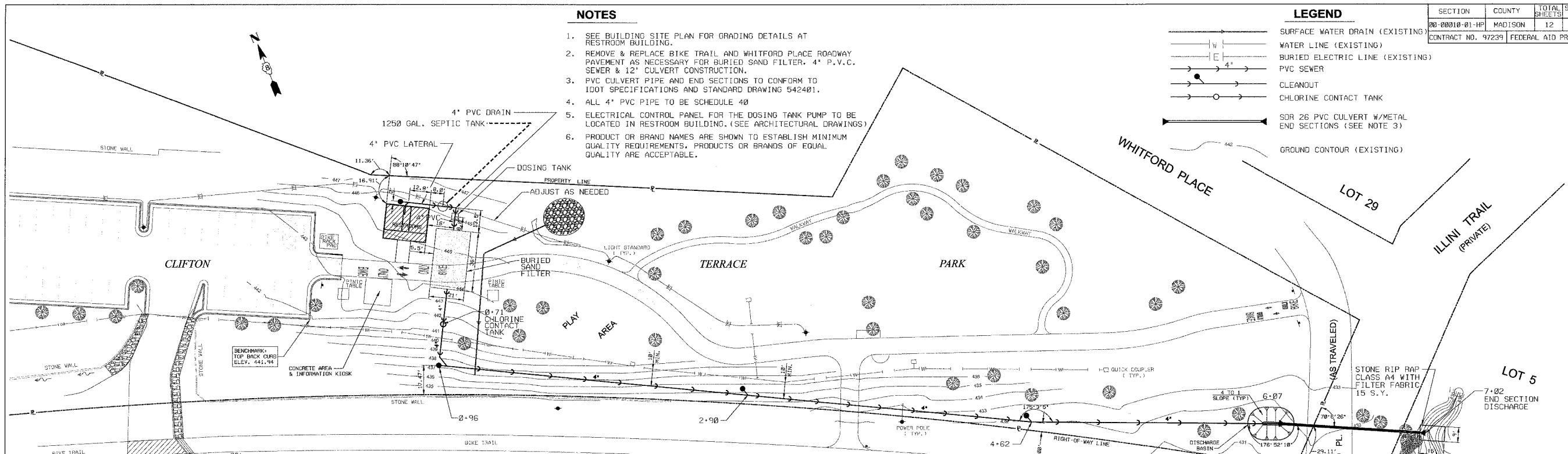
NOTES

1. SEE BUILDING SITE PLAN FOR GRADING DETAILS AT RESTROOM BUILDING.
2. REMOVE & REPLACE BIKE TRAIL AND WHITFORD PLACE ROADWAY PAVEMENT AS NECESSARY FOR BURIED SAND FILTER, 4" P.V.C. SEWER & 12" CULVERT CONSTRUCTION.
3. PVC CULVERT PIPE AND END SECTIONS TO CONFORM TO IDOT SPECIFICATIONS AND STANDARD DRAWING 542401.
4. ALL 4" PVC PIPE TO BE SCHEDULE 40
5. ELECTRICAL CONTROL PANEL FOR THE DOSING TANK PUMP TO BE LOCATED IN RESTROOM BUILDING. (SEE ARCHITECTURAL DRAWINGS)
6. PRODUCT OR BRAND NAMES ARE SHOWN TO ESTABLISH MINIMUM QUALITY REQUIREMENTS. PRODUCTS OR BRANDS OF EQUAL QUALITY ARE ACCEPTABLE.

LEGEND

- SURFACE WATER DRAIN (EXISTING)
- WATER LINE (EXISTING)
- BURIED ELECTRIC LINE (EXISTING)
- PVC SEWER
- CLEANOUT
- CHLORINE CONTACT TANK
- SDR 26 PVC CULVERT W/METAL END SECTIONS (SEE NOTE 3)
- GROUND CONTOUR (EXISTING)

SECTION	COUNTY	TOTAL SHEETS	SHEET NO.
00-00010-01-HP	MADISON	12	10
CONTRACT NO. 97239		FEDERAL AID PROJECT	

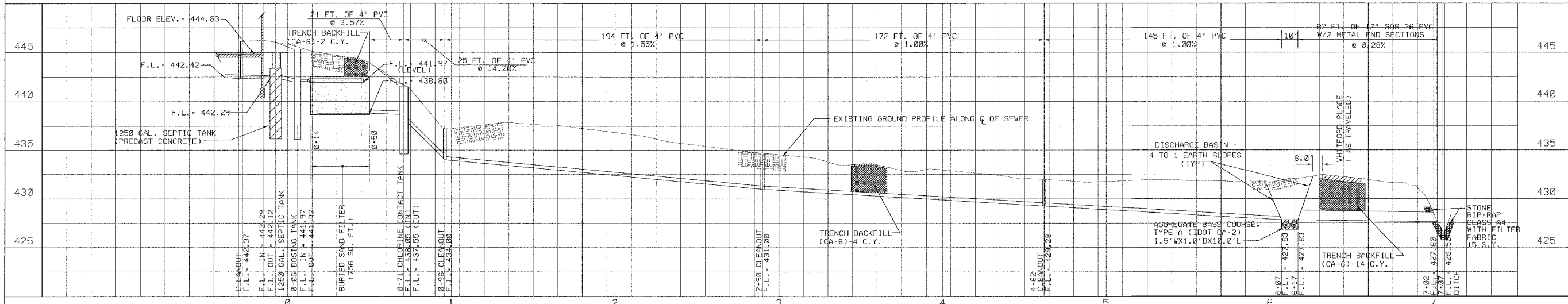


BURIED SAND FILTER
 DISTRIBUTION LINES (4" PERFORATED P.V.C. PIPE)
 COLLECTION LINES (4" PERFORATED P.V.C. PIPE)
 NO SCALE

CLEANOUT DETAIL
 SCALE: 1" = 30' HORIZ.
 1" = 5' VERT.

DOSING TANK
 SCALE: 1" = 3'

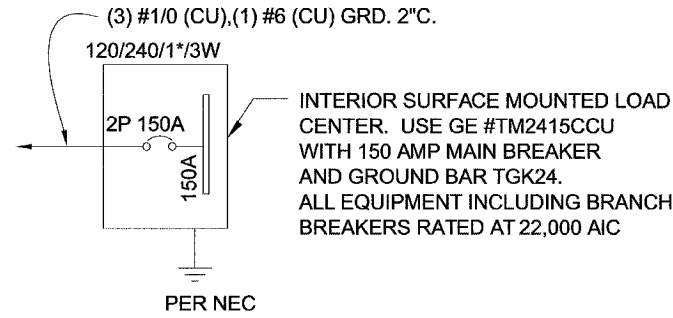
CHLORINE CONTACT TANK
 1" = 3'



Clifton Terrace Park Comfort Station

WASTE WATER TREATMENT SYSTEM

Date 9 FEB 05
 Designed DWH
 Drawn JCU
 Checked DWH
 Revisions



ONE-LINE POWER DIAGRAM

NTS

GENERAL ELECTRICAL NOTES

- RECESSED JUNCTION BOXES FOR SINGLE DEVICES SHALL HAVE SINGLE GANG MUD RINGS CAST IN CONCRETE WALLS.
- ALL RECEPTACLES SHALL BE GFCI PROTECTED BY CIRCUIT BREAKERS, OR BY OTHER GFCI RECEPTACLES.
- ALL CONDUIT SHALL BE SIZED PER NEC. (SEE REF TABLE) EXPOSED CONDUIT SHALL BE EMT/FMC, RECESSED SHALL BE PVC.

WIRE SIZE	1/2" EMT	3/4" EMT	WIRE SIZE	1/2" ENT	3/4" ENT	WIRE SIZE	1/2" FMC	3/4" FMC
14	TYPE THHN 12 MAX	TYPE THHN 22 MAX	14	TYPE THHN 10 MAX	TYPE THHN 18 MAX	14	TYPE THHN 13 MAX	TYPE THHN 22 MAX
12	TYPE THHN 9 MAX	TYPE THHN 16 MAX	12	TYPE THHN 7 MAX	TYPE THHN 13 MAX	12	TYPE THHN 9 MAX	TYPE THHN 16 MAX
10	TYPE THHN 5 MAX	TYPE THHN 10 MAX	10	TYPE THHN 4 MAX	TYPE THHN 8 MAX	10	TYPE THHN 6 MAX	TYPE THHN 10 MAX

- INSTALL ALL WIRING IN CONDUIT OR RELATED ENCLOSURES.
- ALL ELECTRICAL INSTALLATIONS SHALL MEET THE 2002 VERSION OF THE NATIONAL ELECTRICAL CODE.
- MINIMUM WIRE SIZE SHALL BE #12 AWG COPPER, THHN INSULATION UNLESS NOTED OTHERWISE.
- ROUTE ALL CONDUITS IN UTILITY ROOM AT CEILING OR FACE OF WALLS.
- PROVIDE A MOTOR RATED SWITCH FOR DISCONNECT TO HAND DRYER LOCATED IN UTILITY CHASE
- ELECTRICAL DRAWINGS ARE DIAGRAMMATIC IN NATURE & MAY NOT SHOW EXACT LOCATIONS OF DEVICES. REFER TO WALL PANEL & OTHER DRAWINGS FOR EXACT LOCATIONS OF J-BOXES, ETC..

SYM	MFR	MODEL #	CFM	SONES	VOLTS	AMPS	NTS.
EF-1	BROAN	508MG	270	6.0	120	1.7	1

NOTE 1: WITH BROAN #57V SPEED CONTROL, MOUNTED IN CHASE.

SYM	MFR	MODEL #	CFM	VOLTS	WATTS	AMPS	NTS.
H-1	CADET	CT302SP	165	240	3000	12.5	1
H-2	CADET	C152T	83	240	1500	6.25	1

NOTE 1: INTEGRAL THERMOSTAT, SURFACE MOUNTING.

CIRCUIT NUMBER	BREAKER NUMBER	VOLTAGE	POLES	AMPS	DESCRIPTION
1	1	120	1	20	LIGHTS - UTILITY, EXT.
2	2	120	1	20	RECEPTACLE - UTILITY
3	3	120	1	20	HAND DRYER - MEN
4	4	120	1	20	HAND DRYER - WOMEN
5	5	120	1	20	EXHAUST FANS
6	6	120	1	20	DIGITAL TIMER
7	7	120	1	20	RECEPTACLE - MEN
8	8	120	1	20	RECEPTACLE - WOMEN
9	9	240	2	20	H-1 HEATER - MEN
10	10	240	2	20	H-1 HEATER - WOMEN
11	11				H-1 HEATER - MEN
12	12				H-1 HEATER - WOMEN
13	13	240	2	20	H-2 HEATER - CHASE
14	14	120	1	20	DOSING TANK SUMP PUMP
15	15				H-2 HEATER - CHASE
16	16	240	2	30	HOT WATER HEATER
17	17	120	1	20	SPARE
18	18				HOT WATER HEATER

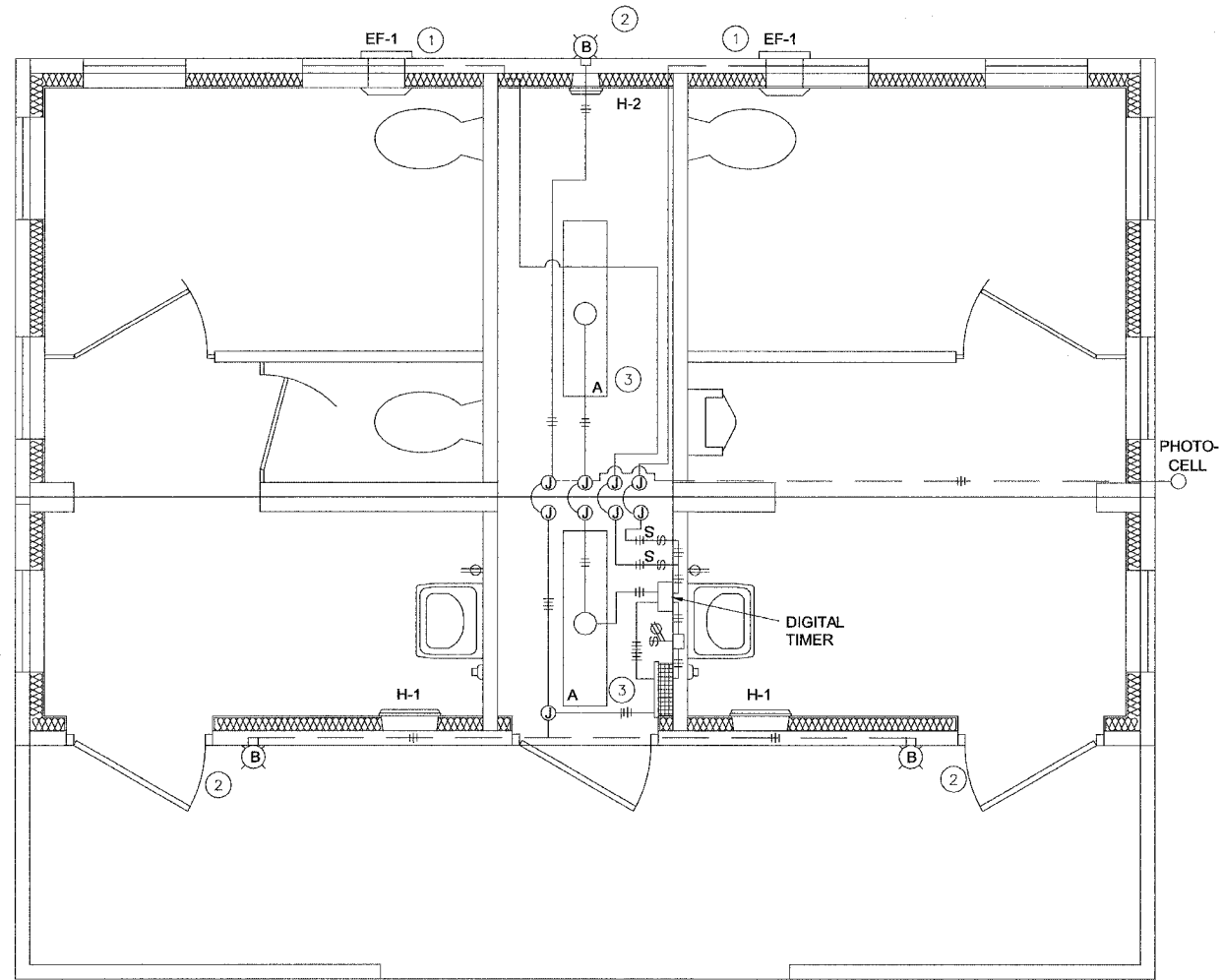
CALCULATED LOAD INCLUDING ALL OPTIONS IS 15249 VA OR 64 AMPS

NOTE: MAXIMUM ALLOWABLE AIC IS 22K AMPS. PANEL MODIFICATIONS WILL BE REQUIRED IF TRANSFORMER CAPACITY EXCEEDS 175 KVA.

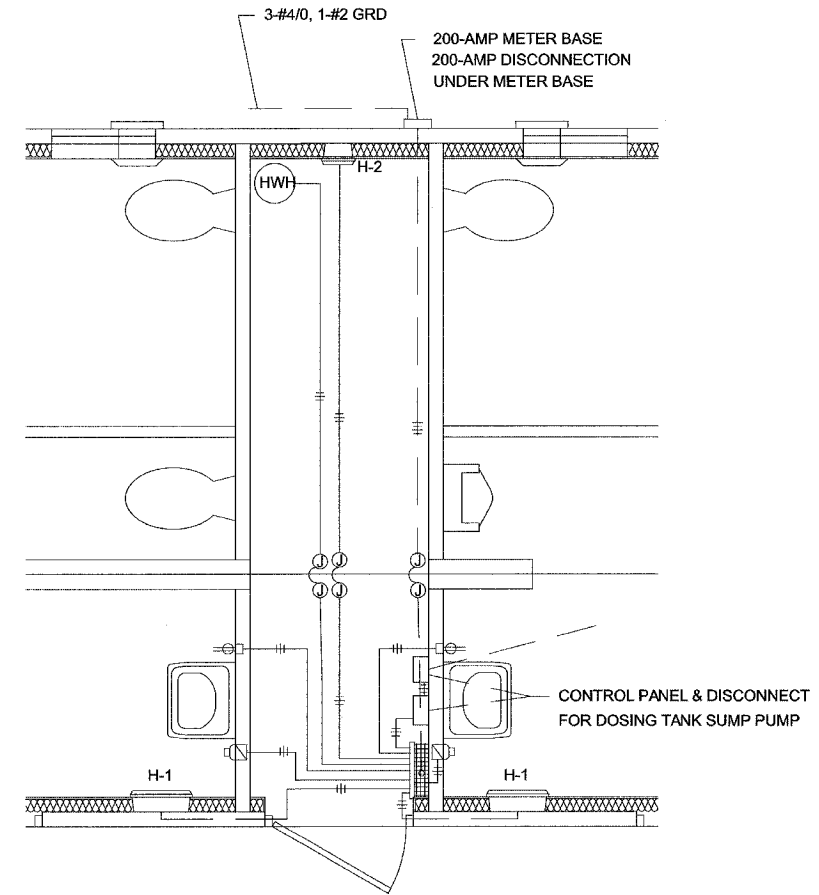
FIXTURE NUMBER	VOLTAGE	WATTS	DESCRIPTION
A	120	88	SURFACE MOUNTED, THREE F032T8 LAMPS 4 FT, WRAP AROUND LENS, LOW TEMPERATURE BALLAST, TIME CLOCK CONTROL WITH SWITCH OVERRIDE
B	120	43	EXTERIOR, VANDAL RESISTANT, WALL MOUNTED, 35 WATT, HIGH PRESSURE SODIUM, ALUMINUM REFLECTOR, BRONZE FINISH, REMOTE PHOTOELECTRIC CONTROL

NOTE: PRODUCT OR BRAND NAMES ARE SHOWN TO ESTABLISH MINIMUM QUALITY REQUIREMENTS, PRODUCTS OR BRANDS OF EQUAL QUALITY ARE ACCEPTABLE.

REVISIONS		ILLINOIS DEPARTMENT OF TRANSPORTATION CLIFTON TERRACE PARK COMFORT STATION ELECTRICAL DETAILS & SCHEDULES
NAME	DATE	
SCALE: VERT. HORIZ.	DATE	DRAWN BY DWH CHECKED BY DWH
	FEBRUARY 9, 2005	



LIGHTING PLAN



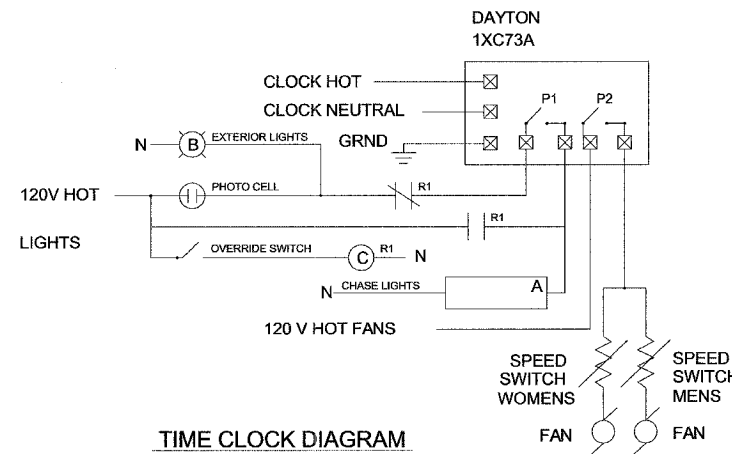
HEATER & RECEPTACLE PLAN

ELECTRICAL - KEY NOTES

- ① CIRCUIT AS NEEDED FOR THE LOAD OF THE EXHAUST FAN. WIRE THROUGH SPEED SWITCH AND TIMER IN CHASE.
- ② LIGHT FIXTURE TO BE CONTROLLED BY PHOTOCELL LOCATED APART FROM FIXTURE. ROUTE WIRING IN CONCEALED CONDUIT.
- ③ RESTROOM CHASE LIGHTS ARE TO OPERATE BY PHOTO CELL WITH SWITCH OVERRIDE.
- ④ PROVIDE DAYTON TIME SWITCH MODEL 1XC73A TO CONTROL FANS.

SYMBOLS

- (B) WALL MOUNTED LIGHTING FIXTURE
- (A) CEILING MOUNTED LIGHTING FIXTURE
- (S) COMBINATION SWITCH & DUPLEX
- (S) SPEED SWITCH
- (S) LOAD CENTER
- (J) JUNCTION BOX AT HAND DRYER MOTOR.
- (J) JUNCTION BOX
- (---) CONCEALED CONDUIT
- (---) SURFACE MOUNTED CONDUIT
- (---) NUMBER OF WIRES INDICATED BY CROSS TICKS. (ONE TICK REPRESENTS GROUND)



TIME CLOCK DIAGRAM

NOTE: ELECTRICAL COMPONENTS ARE SHOWN FOR GENERAL ARRANGEMENT ONLY. CONTRACTOR SHALL SUBMIT DETAILED PLANS FOR APPROVAL PRIOR TO ORDERING BUILDING.

PRODUCT OR BRAND NAMES ARE SHOWN TO ESTABLISH MINIMUM QUALITY REQUIREMENTS, PRODUCTS OR BRANDS OF EQUAL QUALITY ARE ACCEPTABLE.

REVISIONS		ILLINOIS DEPARTMENT OF TRANSPORTATION
NAME	DATE	
		CLIFTON TERRACE PARK COMFORT STATION ELECTRICAL PLAN

SCALE: VERT. 1/2" = 1'-0"
HORIZ. 1/2" = 1'-0"
DATE: FEBRUARY 9, 2005

DRAWN BY: DWH
CHECKED BY: DWH