

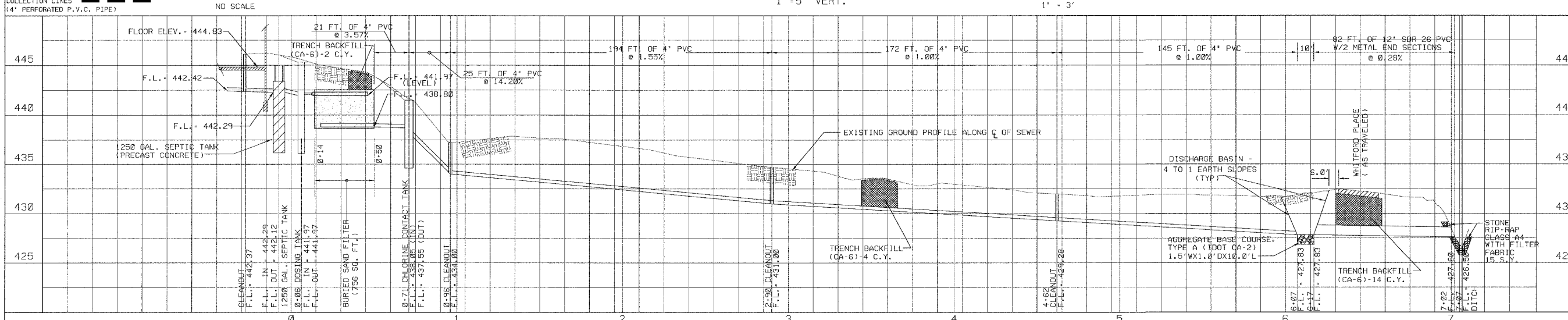
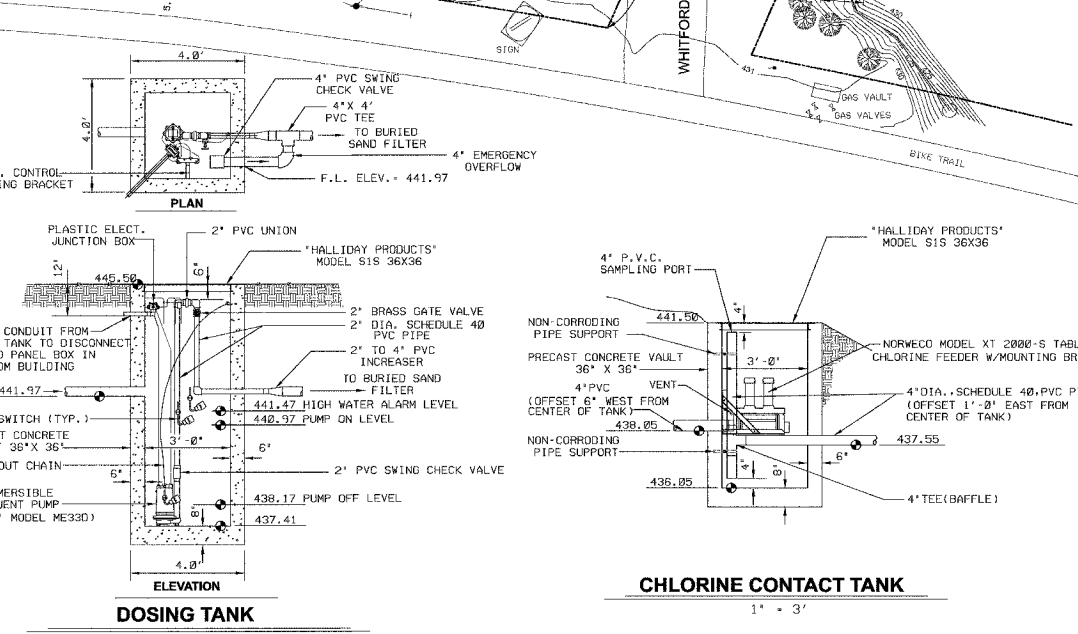
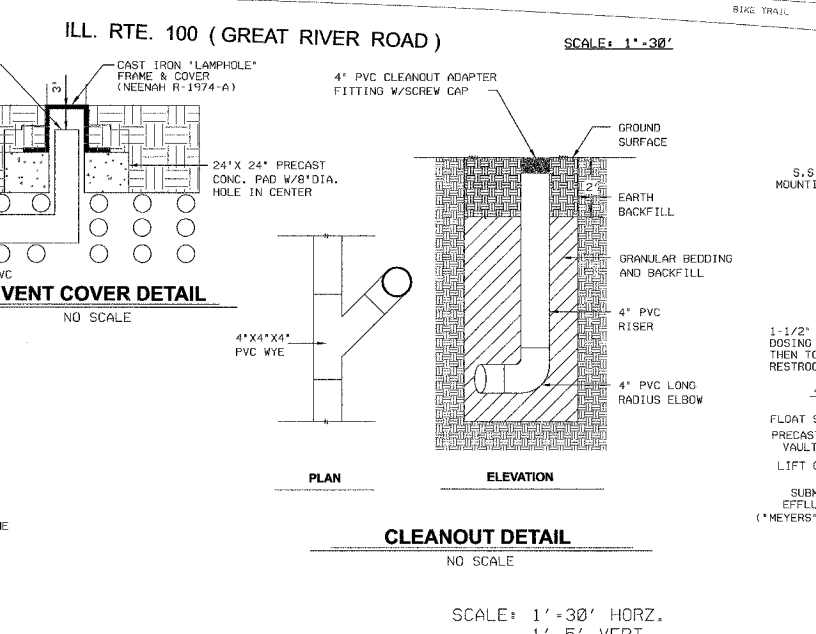
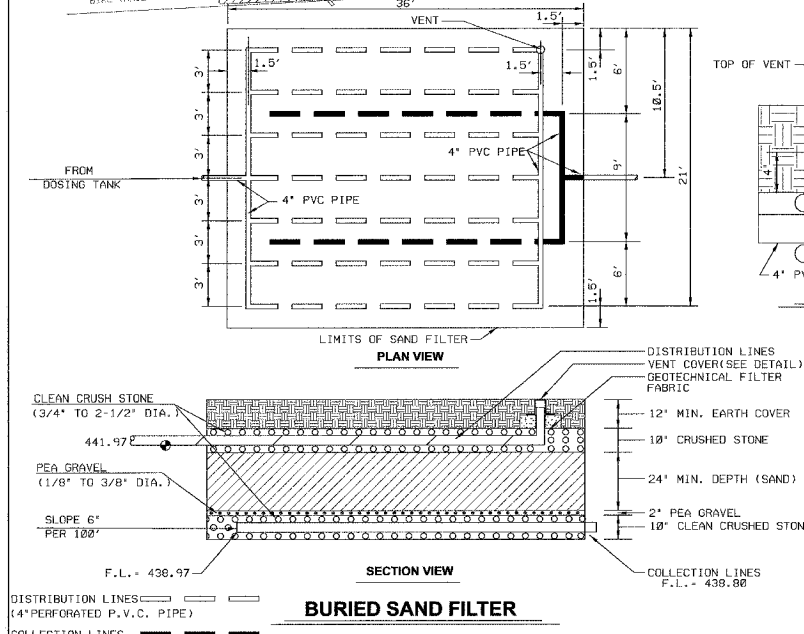
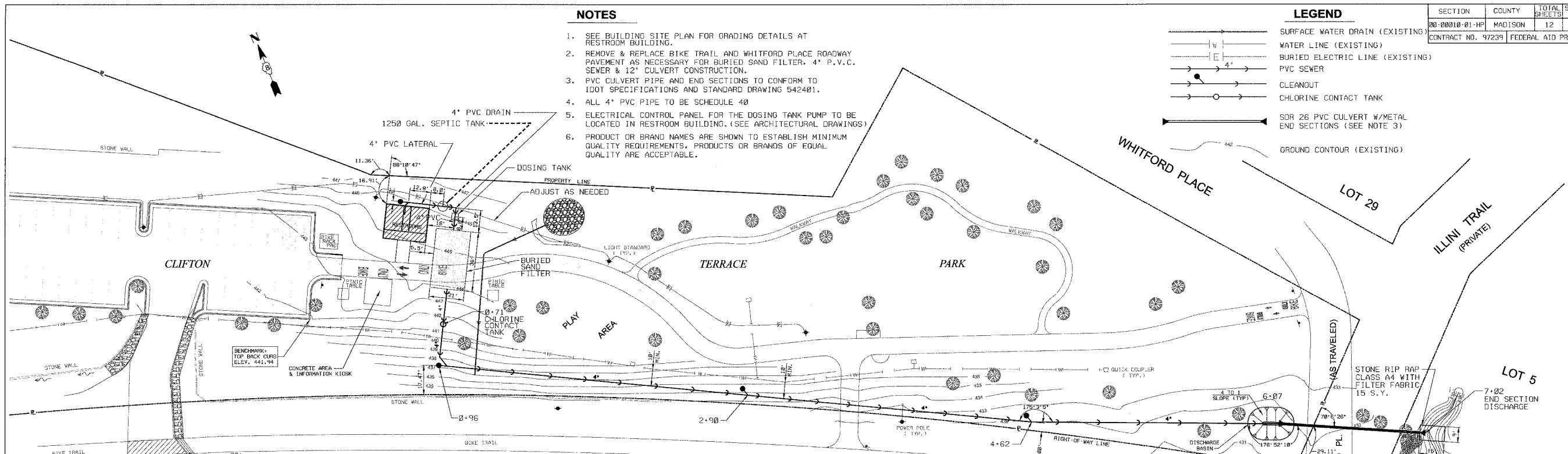
NOTES

1. SEE BUILDING SITE PLAN FOR GRADING DETAILS AT RESTROOM BUILDING.
2. REMOVE & REPLACE BIKE TRAIL AND WHITFORD PLACE ROADWAY PAVEMENT AS NECESSARY FOR BURIED SAND FILTER, 4" P.V.C. SEWER & 12" CULVERT CONSTRUCTION.
3. PVC CULVERT PIPE AND END SECTIONS TO CONFORM TO IDOT SPECIFICATIONS AND STANDARD DRAWING 542401.
4. ALL 4" PVC PIPE TO BE SCHEDULE 40
5. ELECTRICAL CONTROL PANEL FOR THE DOSING TANK PUMP TO BE LOCATED IN RESTROOM BUILDING. (SEE ARCHITECTURAL DRAWINGS)
6. PRODUCT OR BRAND NAMES ARE SHOWN TO ESTABLISH MINIMUM QUALITY REQUIREMENTS. PRODUCTS OR BRANDS OF EQUAL QUALITY ARE ACCEPTABLE.

LEGEND

- SURFACE WATER DRAIN (EXISTING)
- WATER LINE (EXISTING)
- BURIED ELECTRIC LINE (EXISTING)
- PVC SEWER
- CLEANOUT
- CHLORINE CONTACT TANK
- SDR 26 PVC CULVERT W/METAL END SECTIONS (SEE NOTE 3)
- GROUND CONTOUR (EXISTING)

SECTION	COUNTY	TOTAL SHEETS	SHEET NO.
00-00010-01-HP	MADISON	12	10
CONTRACT NO. 97239		FEDERAL AID PROJECT	



Clifton Terrace Park Comfort Station

WASTE WATER TREATMENT SYSTEM

Date 9 FEB 05
 Designed DWH
 Drawn JCU
 Checked DWH
 Revisions