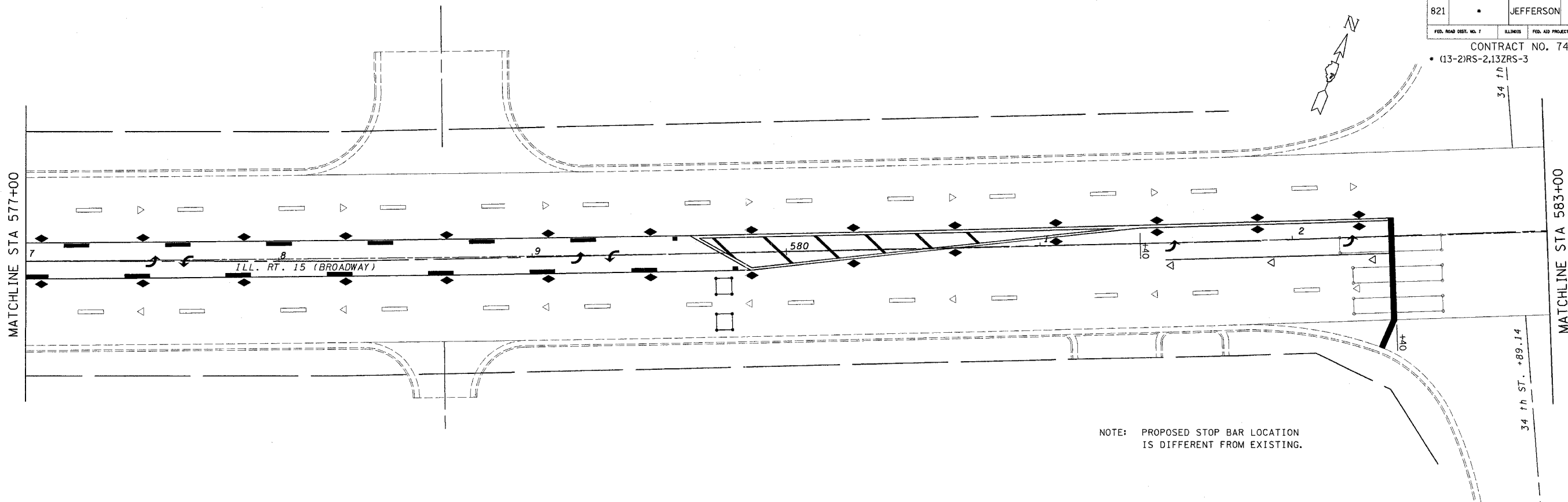


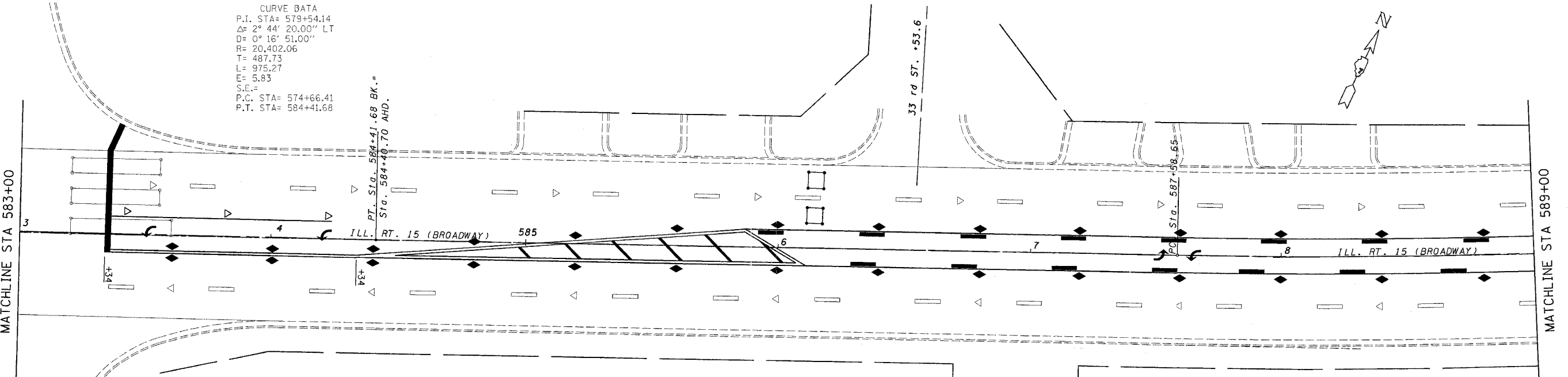
steffenmk  
10/26/2004  
c:\projects\74048d\02904pa.dgn

FAP NO.	SECTION	COUNTY	TOTAL SHEETS	SHEET NO.
821	•	JEFFERSON	11	8
FED. ROAD DIST. NO. 1	BLISS	FED. AID PROJECT NO.		

CONTRACT NO. 74048  
• (13-2)RS-2,13ZRS-3



CURVE DATA  
P.I. STA= 579+54.14  
Δ= 2° 44' 20.00" LT  
D= 0° 16' 51.00"  
R= 20,402.06  
T= 487.73  
L= 975.27  
E= 5.83  
S.E.=  
P.C. STA= 574+66.41  
P.T. STA= 584+41.68



REVISIONS	
NAME	DATE

ILLINOIS DEPARTMENT OF TRANSPORTATION

**STA. 577 + 00  
TO  
STA. 589 + 00**

SCALE: VERT.  
HORIZ.  
DATE

DRAWN BY  
CHECKED BY