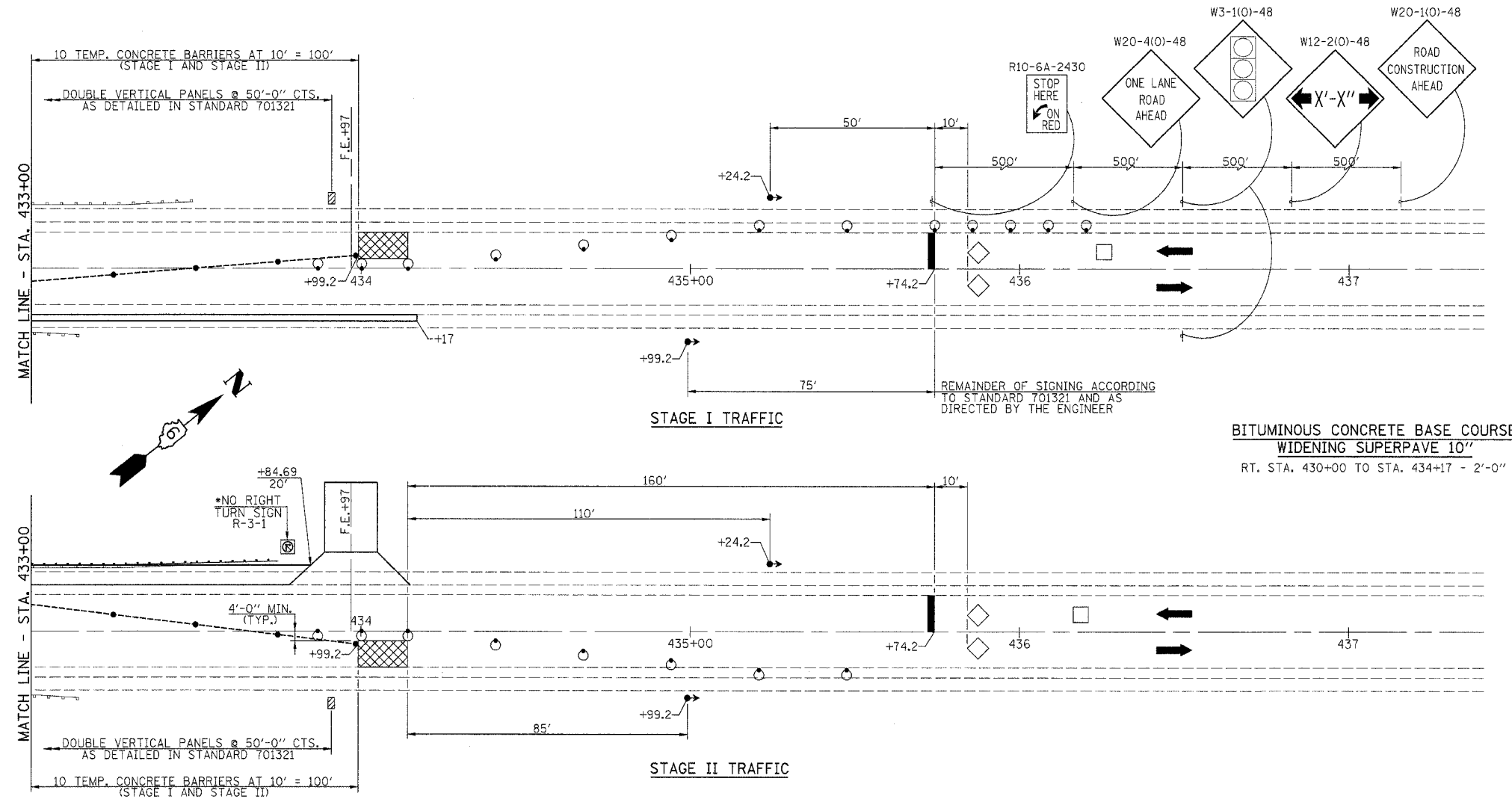


72938

F.A.P. RTE.	SECTION	COUNTY	TOTAL SHEETS	SHEET NO.
714	134B	CHRISTIAN	23	9
STA. 431+92 TO STA. 432+72				
FED. ROAD DIST. NO. ILLINOIS FED. AID PROJECT				



BITUMINOUS CONCRETE BASE COURSE
WIDENING SUPERPAVE 10"
RT. STA. 430+00 TO STA. 434+17 - 2'-0"

* COST OF THIS SIGN SHALL BE INCLUDED IN THE CONTRACT UNIT PRICE FOR TRAFFIC CONTROL AND PROTECTION STANDARD 701321, SPECIAL

TRAFFIC CONTROL SCHEDULE

LOCATION STATION TO STATION	TEMP. CONC. BARRIER (FOOT)	RELOCATE TEMP. CONC. BARRIER (FOOT)	IMPACT ATTENUATOR TEMPORARY (EACH)	RELOCATE IMPACT ATTENUATOR (EACH)
STAGE I				
STA. 430+55.8 TO STA. 430+70.8			1	
STA. 430+70.8 TO STA. 433+99.2	330			
STA. 433+99.2 TO STA. 434+14.2			1	
STAGE II				
STA. 430+55.8 TO STA. 430+70.8				1
STA. 430+70.8 TO STA. 433+99.2		330		
STA. 433+99.2 TO STA. 434+14.2				1
TOTAL	330	330	2	2

SCHEDULE TEMPORARY PAVEMENT MARKING

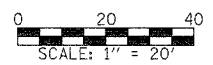
LOCATION STATION TO STATION	TEMP. PAV'T. MARKING LINE - 5" (FOOT)	TEMP. PAV'T. MARKING LINE - 24" (FOOT)
STAGE I		
STA. 428+99 RT.		12
STA. 430+00 TO STA. 434+17 RT.	417	
STA. 435+74.2 LT.		12
NORTH ST. E.B. TRAFFIC LANE		11
NORTH ST. W.B. TRAFFIC LANE		11
STAGE II		
STA. 430+85 TO STA. 434+17 LT.	317	
TOTAL	734	46

- SYMBOLS**
- WORK AREA
 - SIGN
 - TYPE III BARRICADE
 - DRUM WITH STEADY BURNING LIGHT
 - TRAFFIC SIGNAL
 - TEMPORARY RUMBLE STRIP
 - INDUCTION LOOP DETECTOR
 - DOUBLE VERTICAL PANEL
 - TYPE C BIDIRECTIONAL REFLECTOR
 - TEMPORARY CONCRETE BARRIER
 - IMPACT ATTENUATOR
 - STEADY BURNING LIGHTS AND DOUBLE VERTICAL PANELS

NOTE:
SIGNING FOR STAGE II SAME AS STAGE I.

FOR GENERAL NOTES SEE SHEET 8 OF 23.
WORK THIS SHEET WITH SHEETS 7, 8 & 10 OF 23.

STAGE CONSTRUCTION TRAFFIC DETAILS
IL. ROUTE 48 OVER BUCKHART CREEK
F.A.P. ROUTE 714 - SECTION 134B
CHRISTIAN COUNTY
STA. 432+32
S.N. 011-2505



FILE NAME: 134B-SCTD2&3 (REV. 2/27/05)