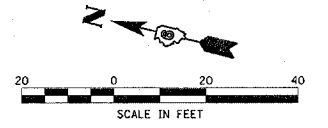
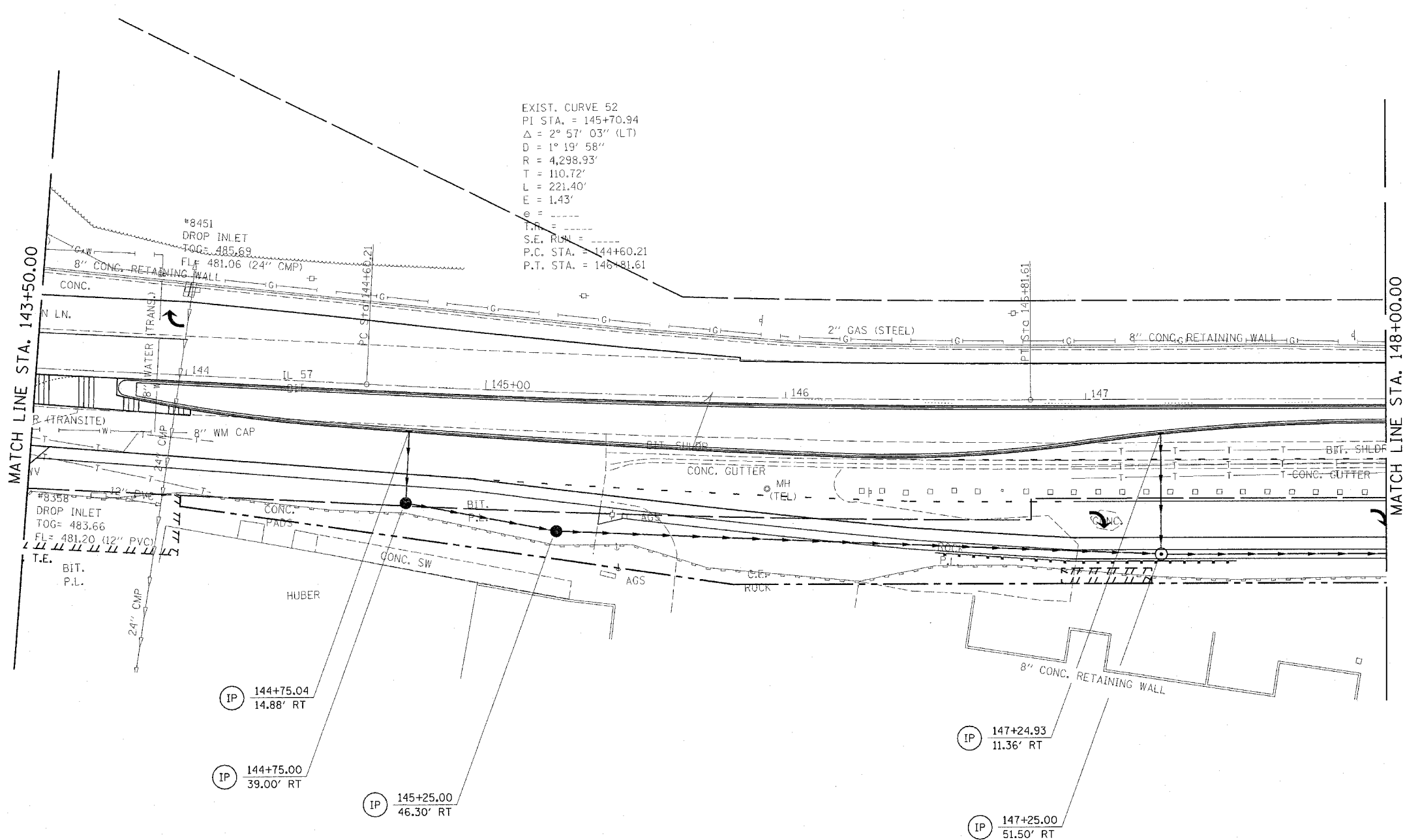


F.A.P. RTE.	SECTION	COUNTY	TOTAL SHEETS	SHEET NO.
502	*	ADAMS	315	95
STA.		TO STA.		
FED. ROAD DIST. NO.		ILLINOIS FED. AID PROJECT		

\* [53RS-7, P(RS-2)N, TS  
CONTRACT NO. 72897



EXIST. CURVE 52  
 PI STA. = 145+70.94  
 $\Delta = 2^\circ 57' 03''$  (LT)  
 $D = 1^\circ 19' 58''$   
 $R = 4,298.93'$   
 $T = 110.72'$   
 $L = 221.40'$   
 $E = 1.43'$   
 $\theta = \dots$   
 $I.A. = \dots$   
 $S.E. RUN = \dots$   
 $P.C. STA. = 144+60.21$   
 $P.T. STA. = 146+81.61$



**LEGEND**

- PERIMETER EROSION BARRIER
- INLET AND PIPE PROTECTION
- TEMPORARY DITCH CHECK

REVISIONS	
NAME	DATE

ILLINOIS DEPARTMENT OF TRANSPORTATION  
**EROSION CONTROL**  
 F.A.P. 502 (IL 57) & RADIO RD.  
 ADAMS COUNTY  
 QUINCY, IL.  
 SCALE: VERT. \_\_\_\_\_  
 HORIZ. \_\_\_\_\_  
 DATE 04-13-04  
 DRAWN BY TMJ  
 CHECKED BY MEB

c:\projects\d653004\ersnctl.dgn  
 2/3/2005  
 \*REF01