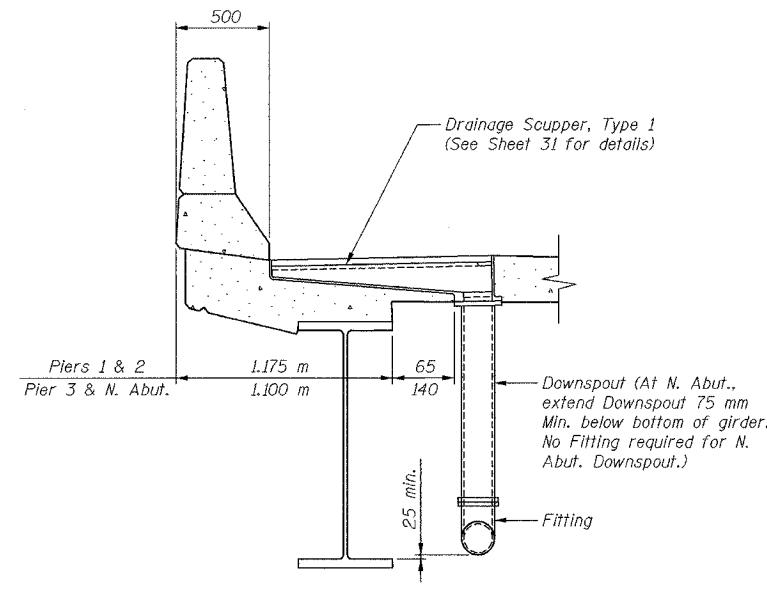
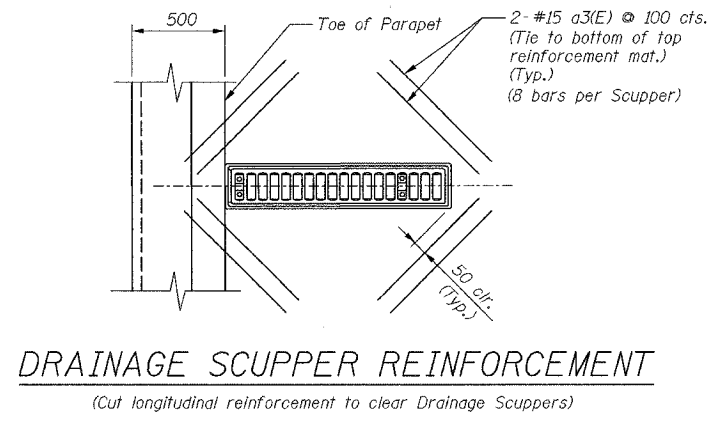


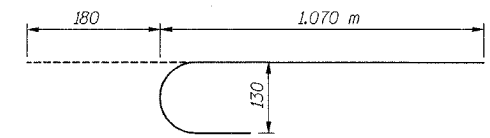
68201	ROUTE No.	SECTION	COUNTY	TOTAL SHEETS	SHEET NO.
FAI 74	*	TAZEWELL	1366	559	
STA.		TO STA.			
F.H.W.A. REGION		ILLINOIS		PROJECT	
SHEET 13 OF 56					



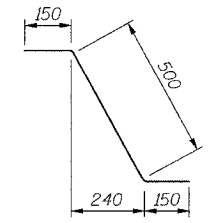
SECTION THRU SCUPPER



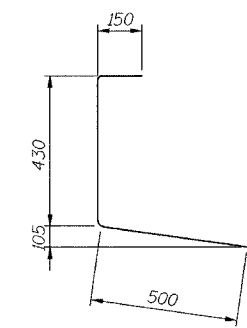
DRAINAGE SCUPPER REINFORCEMENT



BAR x1(E)



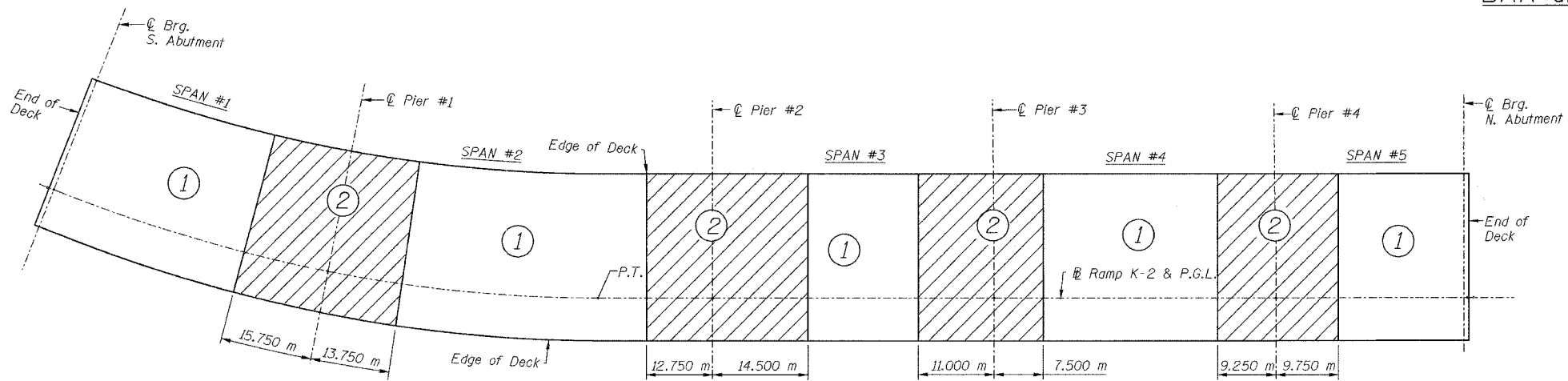
BAR d1(E)



BAR d2(E)

BILL OF MATERIAL

Bar	No.	Size	Length	Shape	
a(E)	1409	#15	8.20	—	
a1(E)	1007	#15	8.20	—	
a2(E)	1410	#20	1.20	—	
a3(E)	40	#15	0.60	—	
b(E)	800	#15	9.06	—	
b1(E)	174	#20	11.31	—	
b2(E)	648	#15	9.00	—	
b3(E)	54	#15	5.65	—	
b4(E)	174	#20	7.52	—	
d1(E)	1559	#15	0.80	┌	
d2(E)	1428	#15	1.08	└	
x1(E)	52	#15	1.25	└	
Protective Coat				SQ M	1,664
Bridge Deck Grooving				SQ M	1,538
Concrete Superstructure				CU M	408.4
Reinforcement Bars, Epoxy Coated				KG	68,350



DECK POUR SEQUENCE

Dimensions along Outside edge of deck. See General Note 14 on Sheet 3.  
An alternate pour sequence may be used with the approval of the Engineer.

NOTES:

1. Work this sheet with sheets 10 thru 12.
2. For parapet details, see sheet 14.
3. For cross-section of deck, see sheet 12.
4. Reinforcement bars designated "E" shall be epoxy coated.
5. All dimensions are in millimeters (mm) except as noted.
6. For drainage scupper locations, see sheet 32.

DESIGNED	HAA
CHECKED	KWS
DRAWN	VH
CHECKED	KJN

**ab** **alfred benesch & company**  
CONSULTING ENGINEERS  
205 NORTH MICHIGAN AVENUE, CHICAGO, ILLINOIS 60601  
JOB NO. 3573

ILLINOIS DEPARTMENT OF TRANSPORTATION  
RAMP K-2 OVER  
MAIN ST & RAMP J-3  
F.A.I. ROUTE 74 (I-74)  
SECTION 90-IIB-5  
**DECK DETAILS**  
SN: 090-0156  
TAZEWELL CO., IL.  
STA. 10+529.222  
DATE: 12-23-04

2/3/2005  
m:\p\03573\vr-ampk2\stl\lp4-7a0900156.dgn