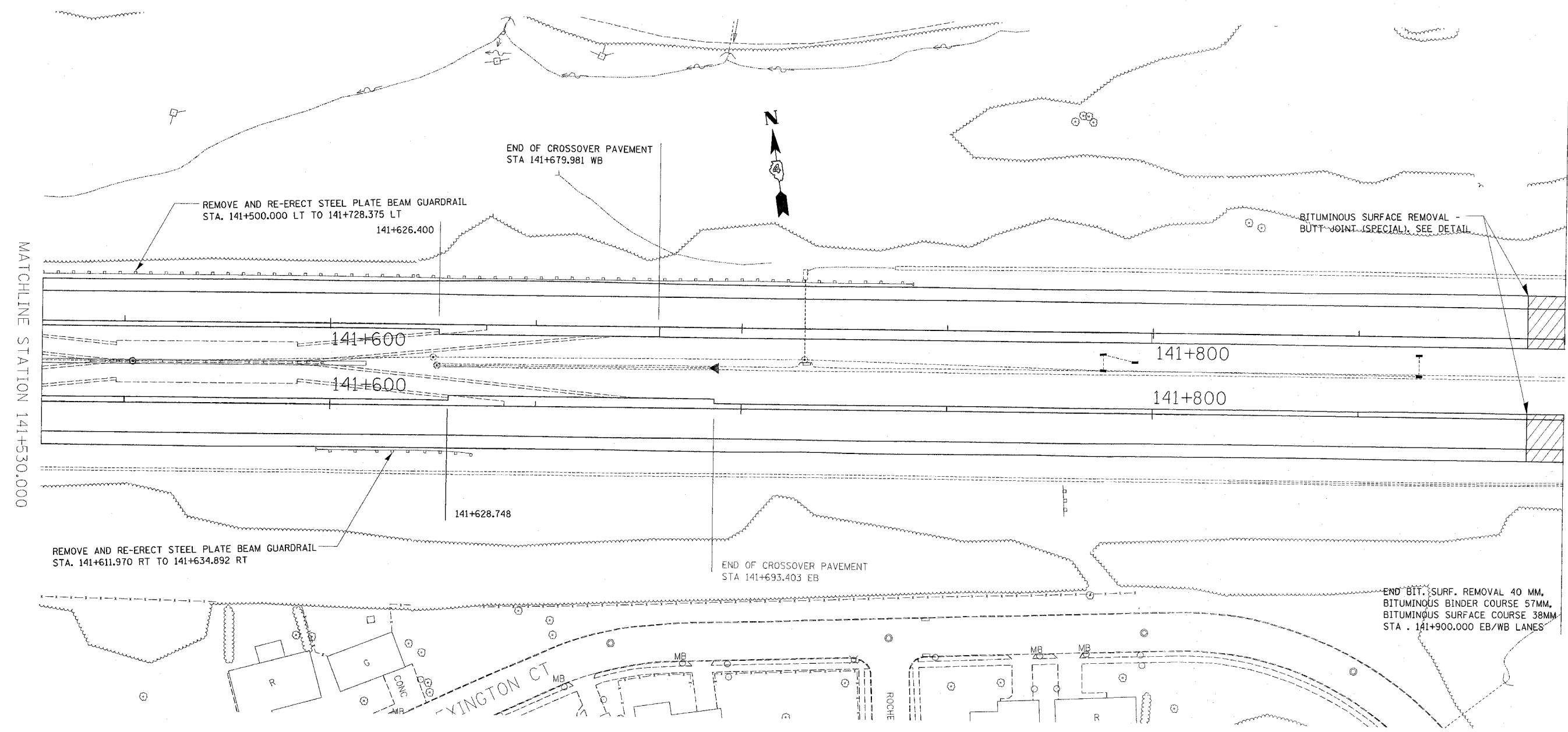


F.A.I. RTE.	SECTION	COUNTY	TOTAL SHEETS	SHEET NO.
14	72-7B-3	PEORIA	1360	1355
STA. 141+530.00		TO STA. 141+900.00		
FED. ROAD DIST. NO. 4		ILLINOIS FED. AID PROJECT		

68200

11



MATCHLINE STATION 141+530.000

REVISIONS	
NAME	DATE

ILLINOIS DEPARTMENT OF TRANSPORTATION

PROPOSED ROADWAY PLAN

DATE 6/21/04  
DRAWN BY CEM  
CHECKED BY CEM

c:\projects\174wb-planw.dgn