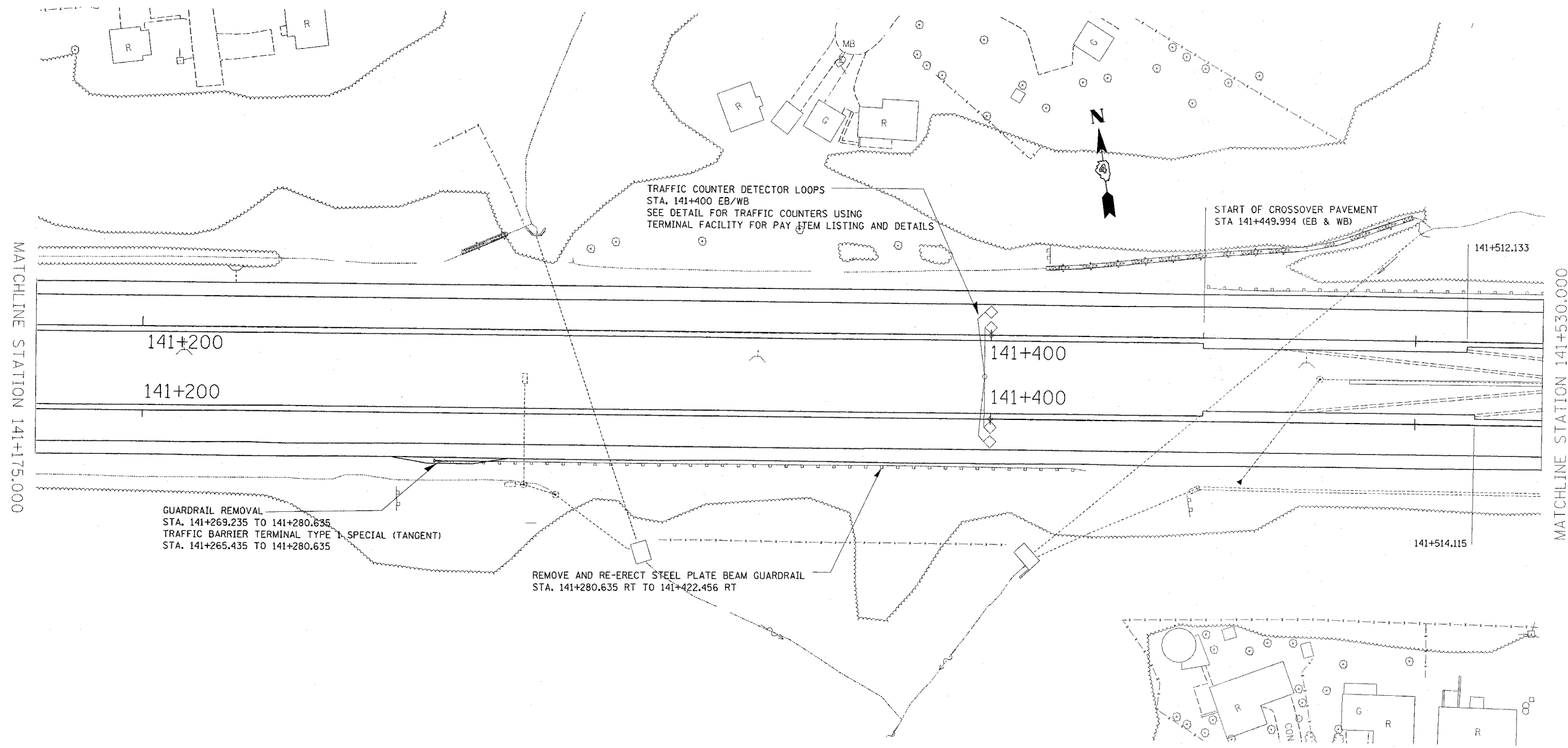


F.A.I. RTE.	SECTION	COUNTY	TOTAL SHEETS	SHEET NO.
74	172-21B-3	PEORIA	136	135
STA. 141+175.00		TO STA. 141+530.00		
FED. ROAD DIST. NO. 4		ILLINOIS FED. AID PROJECT		

68200

10



MATCHLINE STATION 141+175.000

MATCHLINE STATION 141+530.000

REVISIONS	
NAME	DATE

ILLINOIS DEPARTMENT OF TRANSPORTATION

PROPOSED ROADWAY PLAN

DATE 6/21/04

DRAWN BY CEM
CHECKED BY CEM