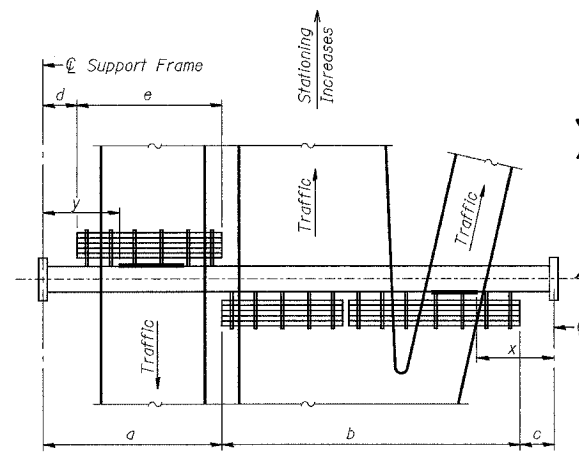


ROUTE No.	SECTION	COUNTY	TOTAL SHEETS	SHEET NO.
FAI 74	*	PEORIA	1360	1304
STA.		TO STA.		
F.H.W.A. REGION		ILLINOIS	PROJECT	
		CONTRACT NO. 68200		

Walkway Grating, Walkway Supports, Handrail and Lighting are not included. Information shown on this sheet shall be used for Truss Grating, Sign Brackets and Sign Panel locations only.



PLAN WALKWAY AND HANDRAIL SKETCH
 (Road plan beneath truss varies)
 "x" and "y" are measured along ϕ of truss to edge of nearest sign panel. See Signing Plans for sign panel details and spacing between panels.
 Aluminum Plank, See Detail T

BRACKET TABLE

W150X14		Number Brackets Required
Sign Width Greater Than	Less Than or Equal To	
3.0	3.0	2
4.9	4.9	3
6.7	6.7	4
8.6	8.6	5
10.4	10.4	6

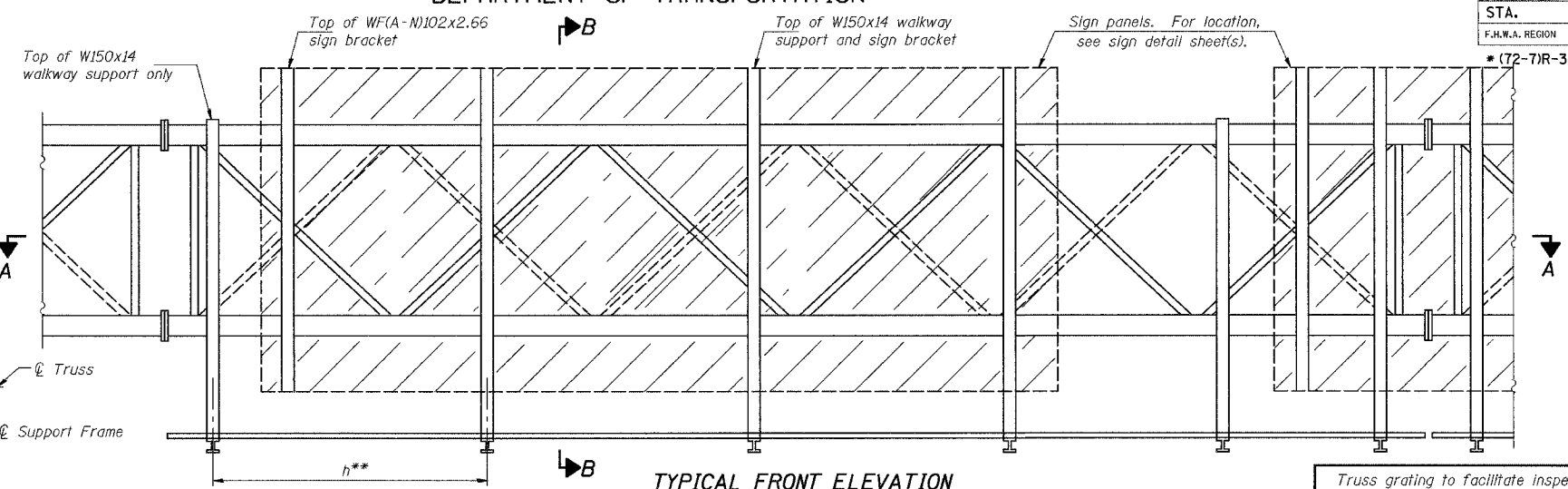
Notes: **Space walkway brackets W150x14 for efficiency and within limits shown:
 f = 300 mm maximum, 100 mm minimum (End of sign to ϕ of nearest bracket)
 g = 300 mm maximum, 100 mm minimum (End of walkway grating to ϕ of nearest support bracket)
 h = 1.85 m maximum (ϕ to ϕ sign and/or walkway support brackets, WF(A-N)102x2.66 or WF(A-N)102x4.55)
 k = 50 mm maximum gap between adjacent walkway grating sections and handrail ends
 ***If walkway bracket at safety chain location is behind sign, add angle to bracket, see Alternate Safety Chain Attachment on Base Sheet OS-S-11(M).
 For Details T and W, Section B-B and Grating Splice Details, see Base Sheet OS-S-10(M).
 For Details D, F, G and P and Handrail Splice Details, see Base Sheet OS-S-11(M).

DESIGNED	RJW
CHECKED	KJN
DRAWN	RJW
CHECKED	KJN

2004
 EXAMINED
 PASSED
 ENGINEER OF STRUCTURAL SERVICES
 ENGINEER OF BRIDGES AND STRUCTURES

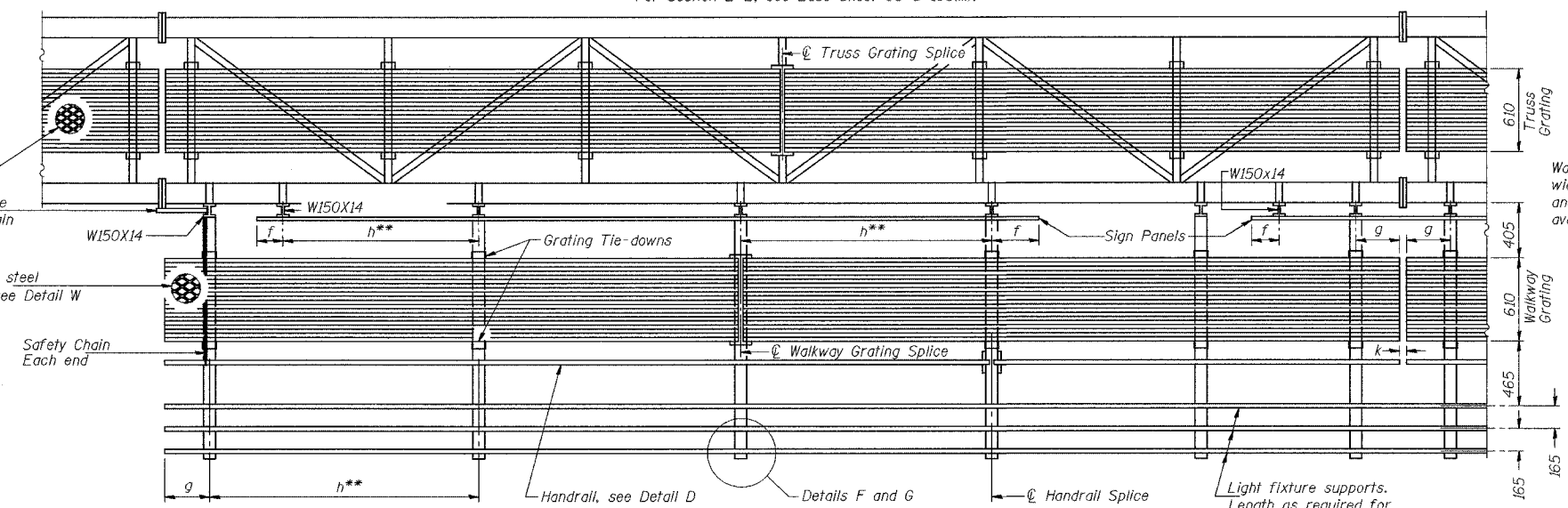
NUMBER	REVISION	DATE

STATE OF ILLINOIS
 DEPARTMENT OF TRANSPORTATION



TYPICAL FRONT ELEVATION
 With lights and handrail omitted for clarity.
 For Section B-B, see Base Sheet OS-S-10S(M).

Truss grating to facilitate inspection shall run full length (center to center of support frames) ± 305 mm on overhead trusses. Cost of truss grating is included in "Overhead Sign Structure".



SECTION A-A

Handrail and walkway shall span a minimum of three brackets between splices and/or gap joints. Place all sign and walkway brackets as close to panel points as practical. Grating, handrail and light support splices placed as needed.

Note: Details shown are considered equal alternatives to the Steel Walkway on Base Sheet OS-S-9(M), and may be substituted by Contractor at no change in contract cost.

Structure Number	Station	a (m)	b (m)	c (m)	d (m)	e (m)	x (m)	y (m)	Walkway Grating and Handrail Lengths
450721074L089.3	143+798.000							6.944	
450721074L089.4	144+154.000							4.774	
450721074L089.7	144+540.000							5.091	

① The outside foundation, end supports, truss and signing are included in this contract. The median foundation was provided in a previous contract.

SIGNING SHEET 56 OF 83

**OVERHEAD SIGN STRUCTURES
 ALTERNATE WALKWAY DETAILS**

ILLINOIS DEPARTMENT OF TRANSPORTATION

SIGNING PLAN
 W.B. I-74 STA. 143+798, S.N. 450721074L089.3
 W.B. I-74 STA. 144+154, S.N. 450721074L089.4
 W.B. I-74 STA. 144+540, S.N. 450721074L089.7

PEORIA CO., IL.

DATE: II-II-04

M:\Proj\3573\Sign Structures\Contract 10/sp1001-7Aoh-sfl.dgn

OS-S-9S(M) 7/1/2001