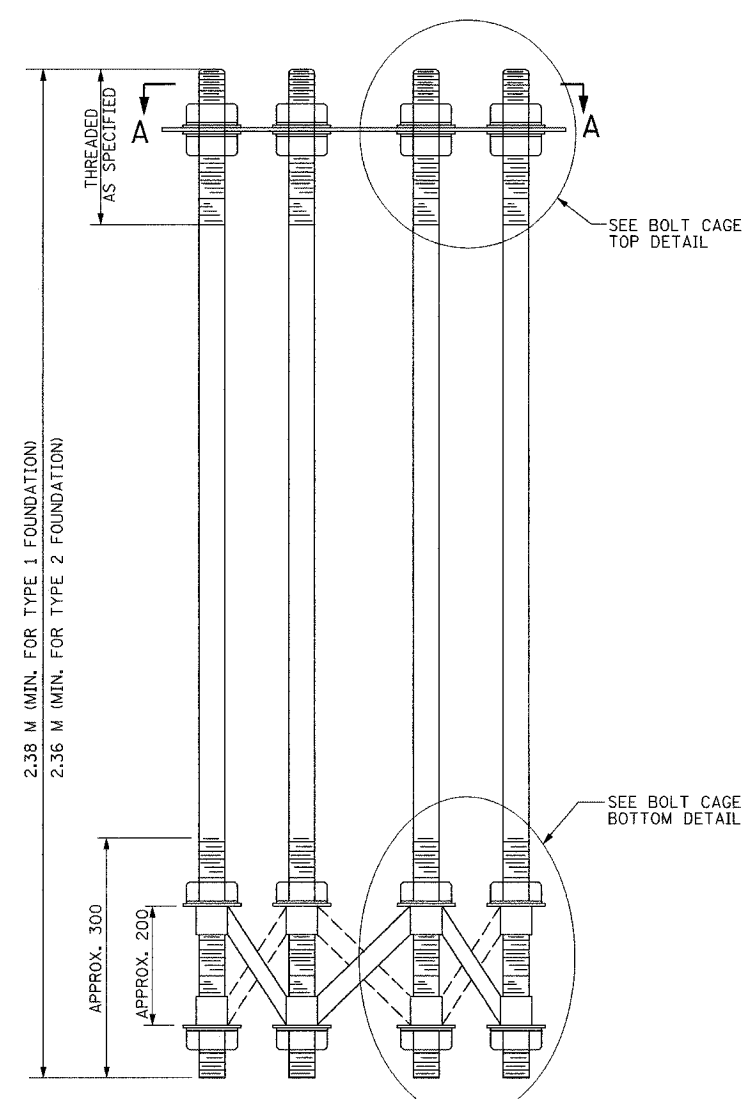


F.A.I. RTE.	SECTION	COUNTY	TOTAL SHEETS	SHEET NO.
74	(72-7)R-3	PEORIA	13	1236
STA.		TO STA.		
FED. ROAD DIST. NO.		ILLINOIS	FED. AID PROJECT	

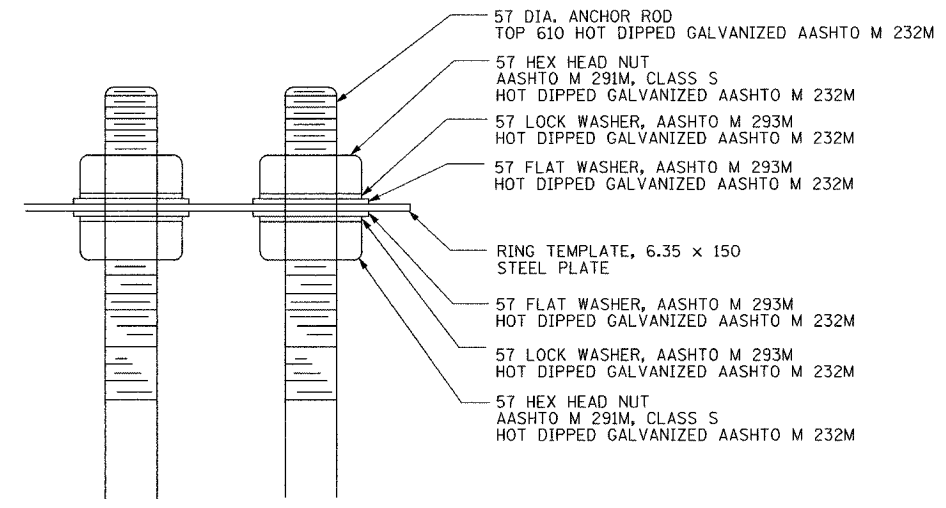
CONTRACT NO. 68200

### FOUNDATION NOTES

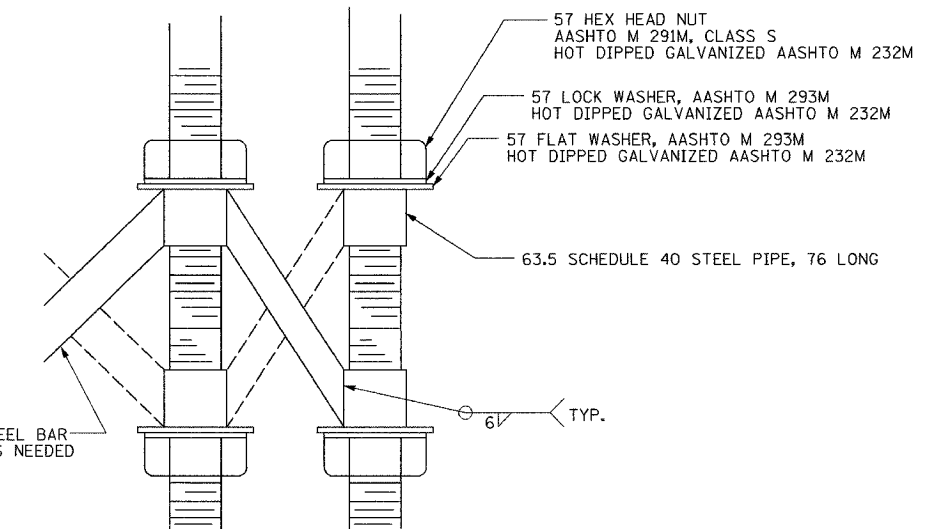
1. ALL DIMENSIONS IN MILLIMETERS UNLESS OTHERWISE SHOWN.
2. ANCHOR RODS SHALL BE STRAIGHT AND SHALL BE ACCORDING TO AASHTO M 314M OR ASTM F1554, GRADE 725 AND GALVANIZED ACCORDING TO ARTICLE 1006.09 OF THE STANDARD SPECIFICATIONS.
3. ANCHOR ROD INFORMATION SHALL BE SUBMITTED FOR APPROVAL AND SHALL BE FULLY COORDINATED WITH TOWER MANUFACTURER'S REQUIREMENTS.
4. THE ANCHOR BOLTS SHALL BE VERTICAL. NO ADJUSTMENT SHALL BE ALLOWED AFTER THE FOUNDATION HAS BEEN PLACED.
5. THE GAP BETWEEN THE FOUNDATION AND THE BASE PLATE SHALL BE ENCLOSED WITH A STAINLESS STEEL SCREEN FASTENED WITH A STAINLESS STEEL BAND.
6. SPLICES FOR SPIRAL REINFORCEMENT SHALL BE LAP SPLICED 600 MM.
7. TOP OF GROUND ELEVATIONS, LENGTHS, AND REINFORCEMENT LENGTHS ARE BASED ON THE SOIL BORINGS. IF OTHER SOIL CONDITIONS ARE ENCOUNTERED, THE ENGINEER SHALL BE NOTIFIED AND THE FOUNDATION CONSTRUCTED AS DIRECTED BY THE ENGINEER. IN GENERAL, FOR A UNIFORM LAYER OF SAND OR STIFF CLAY ( $Q_u > 145 \text{ kPa}$ ), MINIMUM SHAFT EMBEDDED = 4.9 m, FOR A UNIFORM LAYER OF MEDIUM CLAY ( $36 \text{ kPa} < Q_u < 145 \text{ kPa}$ ), MINIMUM SHAFT EMBEDDED = 6.7 m, AND FOR A UNIFORM LAYER OF SOFT CLAY ( $Q_u < 36 \text{ kPa}$ ), MINIMUM SHAFT EMBEDDED = 9.8 m.
8. ANCHOR BOLT, ANCHOR BOLT CAGE, AND RING TEMPLATE DIMENSIONS SHALL BE VERIFIED WITH THE POLE MANUFACTURER.
9. THE LIGHT TOWER SHALL NOT BE ERECTED UNTIL AFTER THE CONCRETE HAS BEEN CURED ACCORDING TO ARTICLE 1020.13 OF THE STANDARD SPECIFICATIONS.
10. REINFORCEMENT SHALL CONFORM TO THE REQUIREMENTS OF AASHTO M 31M, M 42M, OR M 53M GRADE 400.
11. TWO ANCHOR RODS OPPOSITE EACH OTHER SHALL HAVE THE ANCHOR ROD THREADS PEENED AFTER NUTS ARE INSTALLED.



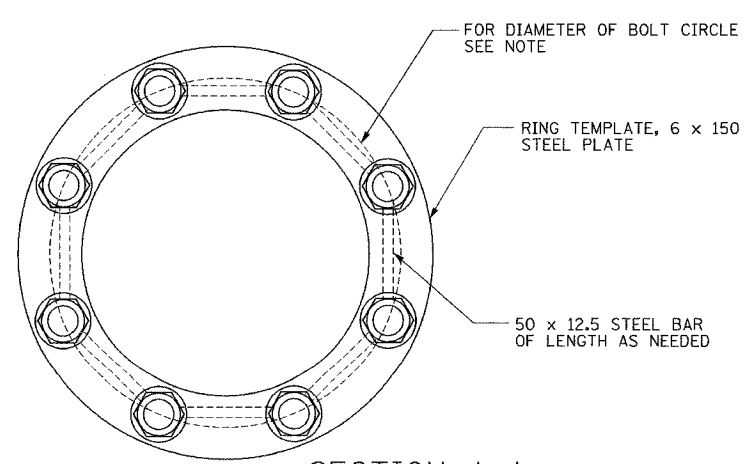
ANCHOR BOLT CAGE



BOLT CAGE TOP



BOLT CAGE BOTTOM



SECTION A-A

NOTE: CONTRACTOR SHALL VERIFY AND FULLY COORDINATE THE PROPOSED FOUNDATION'S ANCHOR BOLT SIZE, LENGTH, AND CIRCLE DIAMETER WITH THE HIGH MAST TOWER MANUFACTURER'S ANCHOR BOLT CIRCLE.

LIGHTING SHEET 52 OF 64

REVISIONS	
NAME	DATE

ILLINOIS DEPARTMENT OF TRANSPORTATION  
 LIGHT TOWER FOUNDATION NOTES  
 AND ANCHOR BOLT DETAILS  
 DRAWN BY JSS  
 CHECKED BY WJZ/CFD  
 DATE: 11/12/04

**ab** alfred benesch & company  
 CONSULTING ENGINEERS  
 205 NORTH MICHIGAN AVENUE, CHICAGO, ILLINOIS 60601

m:\proj\3573\lighting\4\contract\10\11000-7a\_jmf\dmts.dgn

4/3/03 PM

11/12/2004