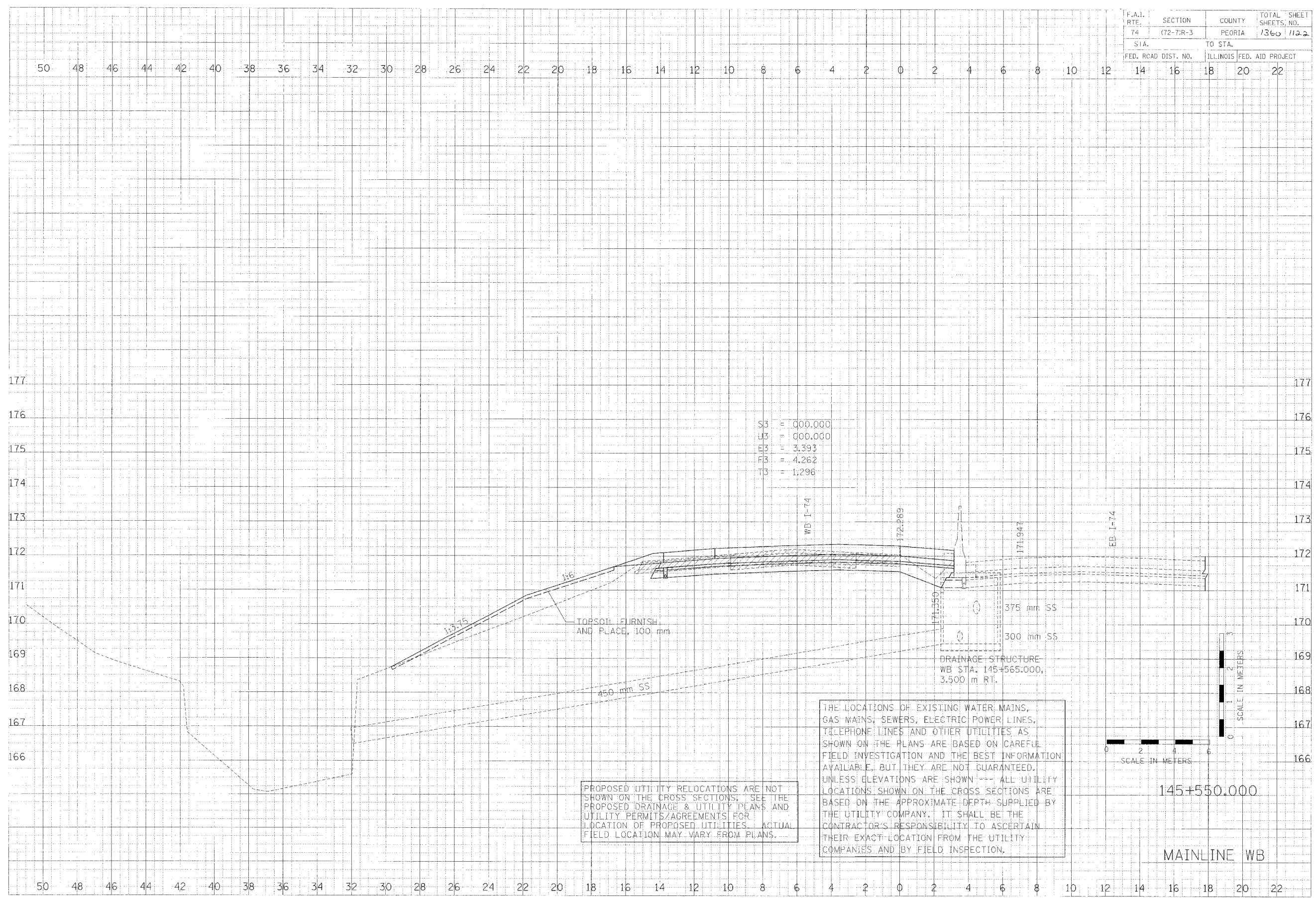


F.A.I. RTE.	SECTION	COUNTY	TOTAL SHEET
74	(72-7)R-3	PEORIA	1360 / 1122
S.I.A.	TO STA.		
FED. ROAD DIST. NO.	ILLINOIS	FED. AID PROJECT	
14	16	18	20 22

DATE	BY	CHKD
10/15/14	JACOB C. CLARK	
DATE	BY	CHKD
10/15/14	JACOB C. CLARK	
DATE	BY	CHKD
10/15/14	JACOB C. CLARK	

CLARK ENGINEERS, INC.

DATE	BY	CHKD
10/15/14	JACOB C. CLARK	
DATE	BY	CHKD
10/15/14	JACOB C. CLARK	
DATE	BY	CHKD
10/15/14	JACOB C. CLARK	



SS = 000.000
 U3 = 000.000
 E3 = 3.393
 F3 = 4.262
 T3 = 1.296

PROPOSED UTILITY RELOCATIONS ARE NOT SHOWN ON THE CROSS SECTIONS; SEE THE PROPOSED DRAINAGE & UTILITY PLANS, AND UTILITY PERMITS/AGREEMENTS FOR LOCATION OF PROPOSED UTILITIES. ACTUAL FIELD LOCATION MAY VARY FROM PLANS.

THE LOCATIONS OF EXISTING WATER MAINS, GAS MAINS, SEWERS, ELECTRIC POWER LINES, TELEPHONE LINES AND OTHER UTILITIES AS SHOWN ON THE PLANS ARE BASED ON CAREFUL FIELD INVESTIGATION AND THE BEST INFORMATION AVAILABLE, BUT THEY ARE NOT GUARANTEED. UNLESS ELEVATIONS ARE SHOWN --- ALL UTILITY LOCATIONS SHOWN ON THE CROSS SECTIONS ARE BASED ON THE APPROXIMATE DEPTH SUPPLIED BY THE UTILITY COMPANY. IT SHALL BE THE CONTRACTOR'S RESPONSIBILITY TO ASCERTAIN THEIR EXACT LOCATION FROM THE UTILITY COMPANIES AND BY FIELD INSPECTION.

145+550.000
 MAINLINE WB