

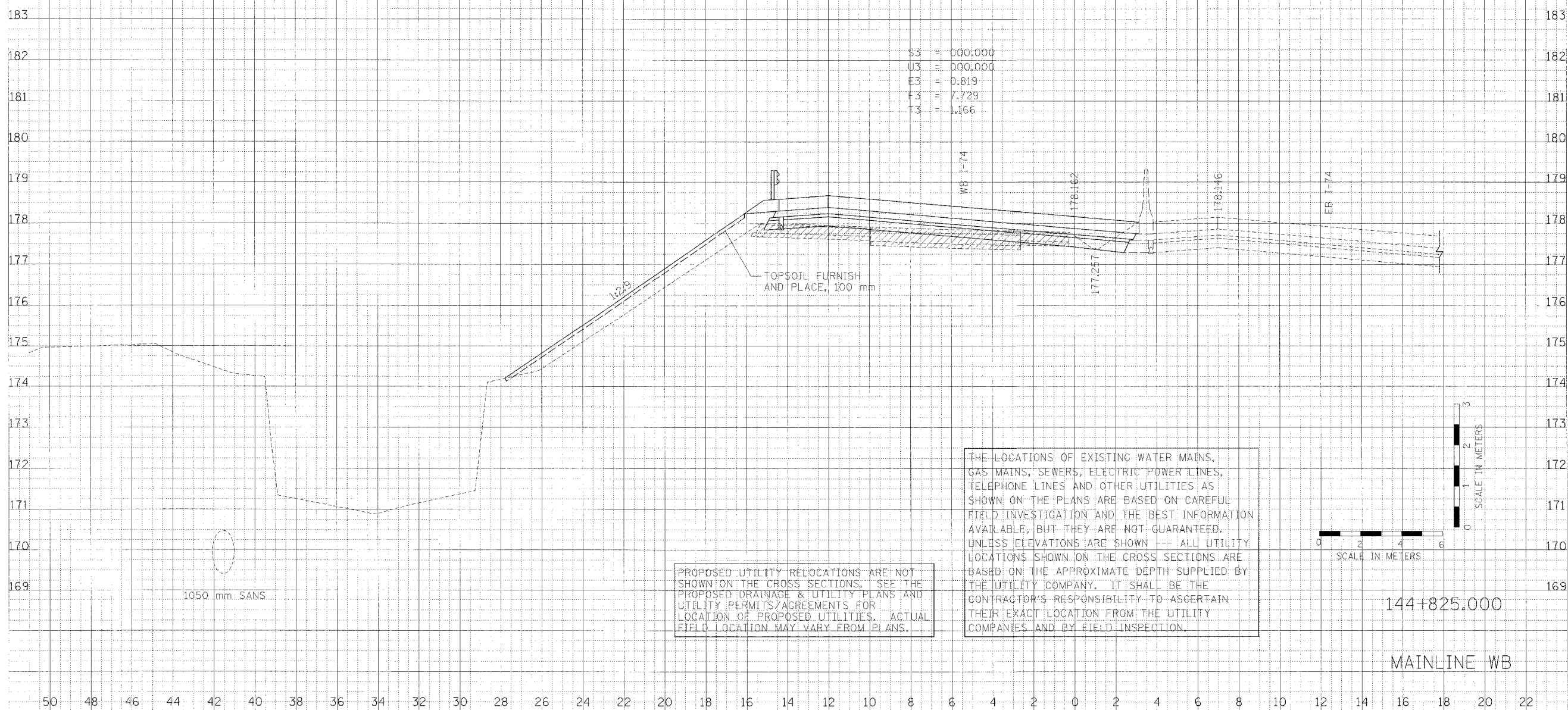
F.A.I. RTE.	SECTION	COUNTY	TOTAL SHEETS	SHEET NO.
74	(72-7R-3	PEORIA	1360	1090
STA.		TO STA.		
FED. ROAD DIST. NO.		ILLINOIS FED. AID PROJECT		

50 48 46 44 42 40 38 36 34 32 30 28 26 24 22 20 18 16 14 12 10 8 6 4 2 0 2 4 6 8 10 12 14 16 18 20 22

DATE	BY	SCALE
APPROVED SURVEY PLOTTED		
NOTE BOOK		

CLARK ENGINEERS, INC.

DATE	BY	SCALE
APPROVED SURVEY PLOTTED		
NOTE BOOK		



PROPOSED UTILITY RELOCATIONS ARE NOT SHOWN ON THE CROSS SECTIONS. SEE THE PROPOSED DRAINAGE & UTILITY PLANS AND UTILITY PERMITS/AGREEMENTS FOR LOCATION OF PROPOSED UTILITIES. ACTUAL FIELD LOCATION MAY VARY FROM PLANS.

THE LOCATIONS OF EXISTING WATER MAINS, GAS MAINS, SEWERS, ELECTRIC POWER LINES, TELEPHONE LINES AND OTHER UTILITIES AS SHOWN ON THE PLANS ARE BASED ON CAREFUL FIELD INVESTIGATION AND THE BEST INFORMATION AVAILABLE, BUT THEY ARE NOT GUARANTEED. UNLESS ELEVATIONS ARE SHOWN --- ALL UTILITY LOCATIONS SHOWN ON THE CROSS SECTIONS ARE BASED ON THE APPROXIMATE DEPTH SUPPLIED BY THE UTILITY COMPANY. IT SHALL BE THE CONTRACTOR'S RESPONSIBILITY TO ASCERTAIN THEIR EXACT LOCATION FROM THE UTILITY COMPANIES AND BY FIELD INSPECTION.