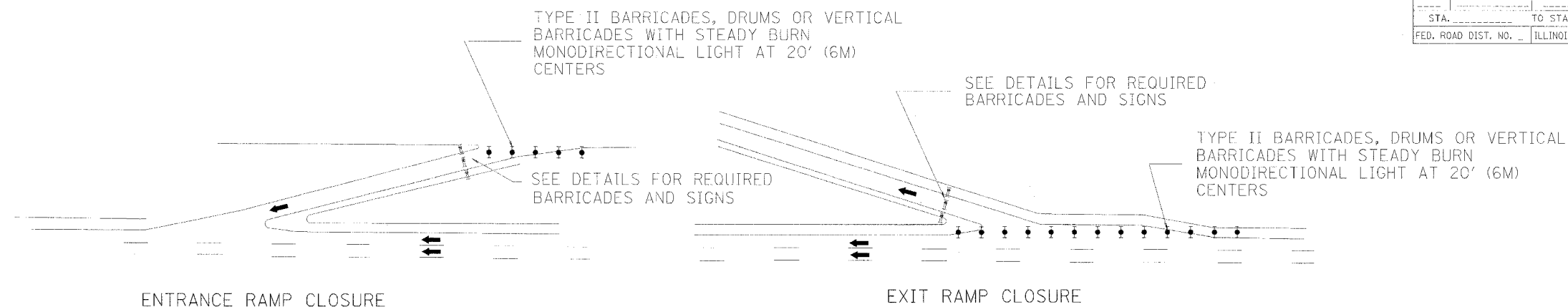
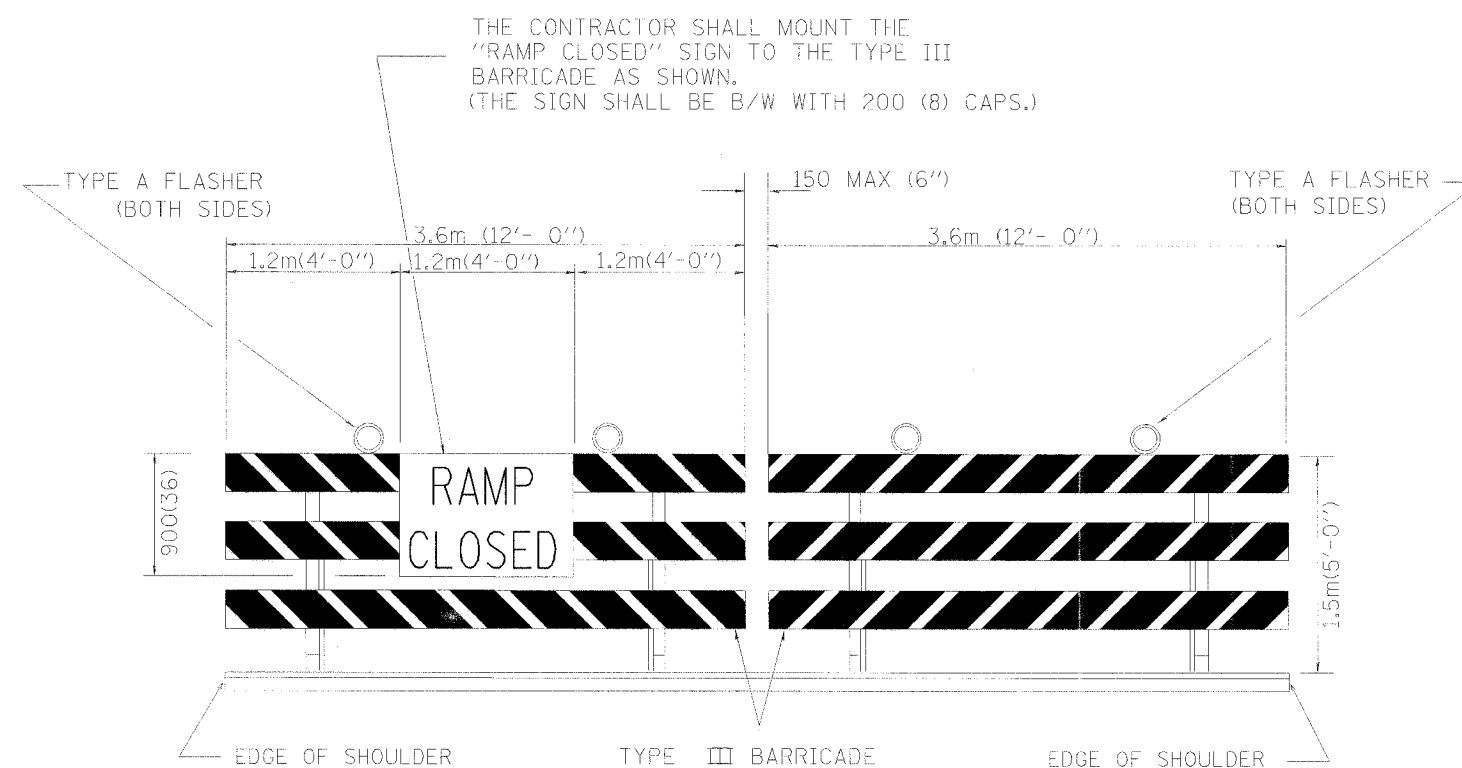


F.A. RTE.	SECTION	COUNTY	TOTAL SHEETS	SHEET NO.
			1360	1077
STA.		TO STA.		
FED. ROAD DIST. NO.		ILLINOIS FED. AID PROJECT		



ENTRANCE RAMP CLOSURE

EXIT RAMP CLOSURE



DETAIL FOR REQUIRED BARRICADES & SIGNS



PLACE 150 M (500') IN ADVANCE OF RAMP

BLACK LEGEND ON ORANGE REFLECTORIZED BACKGROUND

RAMP CLOSED AHEAD SIGN

NOTES:

REFLECTORIZED STRIPING MAY BE OMITTED ON THE BACK SIDE OF THE BARRICADES. IF A TYPE III BARRICADE WITH AN ATTACHED SIGN PANEL WHICH MEETS NCHRP 350 IS NOT AVAILABLE, THE SIGN MAY BE MOUNTED ON AN NCHRP 350 TEMPORARY SIGN SUPPORT DIRECTLY IN FRONT OF THE BARRICADE.

CONES MAY BE SUBSTITUTED FOR TYPE I AND TYPE II BARRICADES AND DRUMS DURING DAY OPERATIONS. CONES SHALL BE A MINIMUM OF 700 (28') IN HEIGHT.

All dimensions are in millimeters (inches) unless otherwise noted.

REVISIONS	
NAME	DATE
HS 04-2004	4/27/04

ILLINOIS DEPARTMENT OF TRANSPORTATION
I-74 PROJECT STANDARD 701411-I74
ENTRANCE AND EXIT RAMP
CLOSURE DETAILS

DRAWN BY
CHECKED BY
DATE 10/9/01