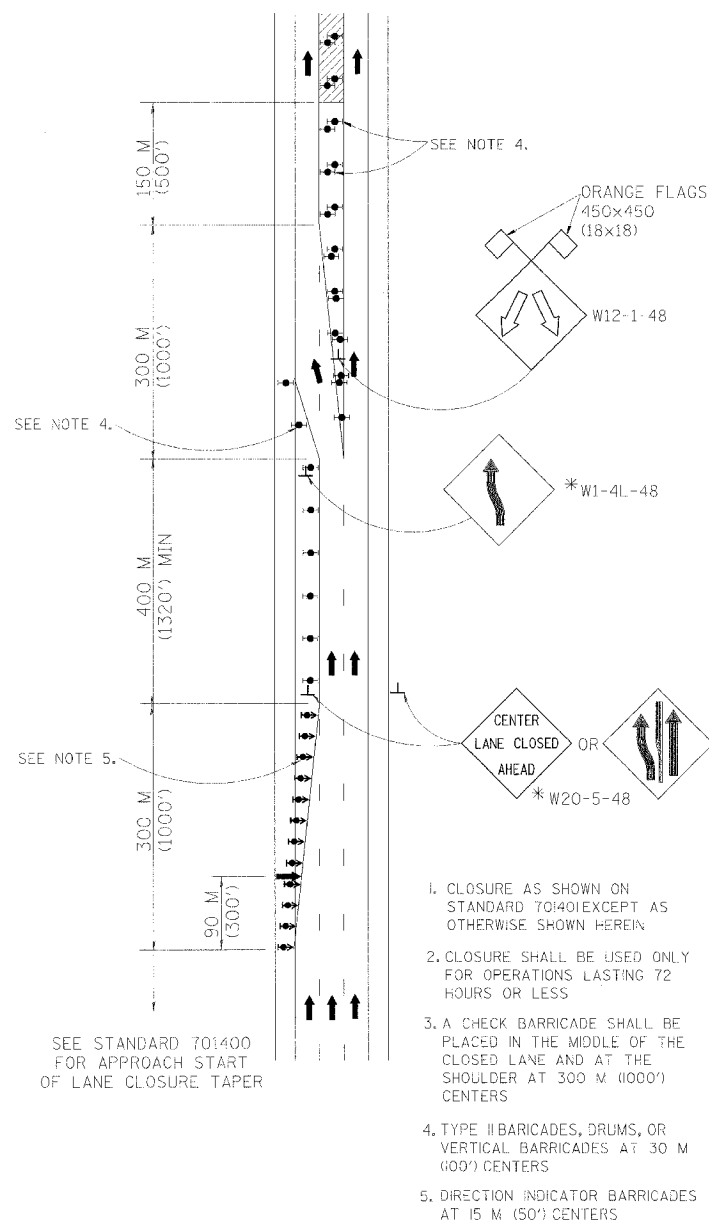


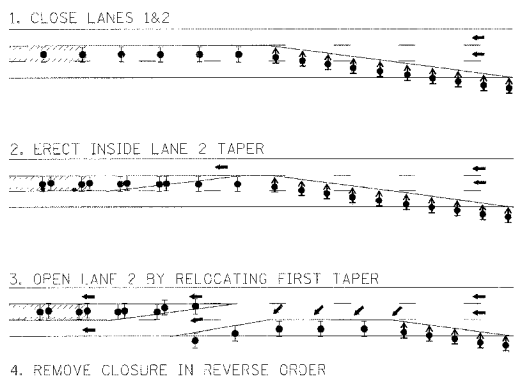
F.A. RTE.	SECTION	COUNTY	TOTAL SHEETS NO.
			1360 / 673
STA.	TO STA.		
FED. ROAD DIST. NO.	ILLINOIS	FED. AID PROJECT	

## CENTER LANE CLOSURE

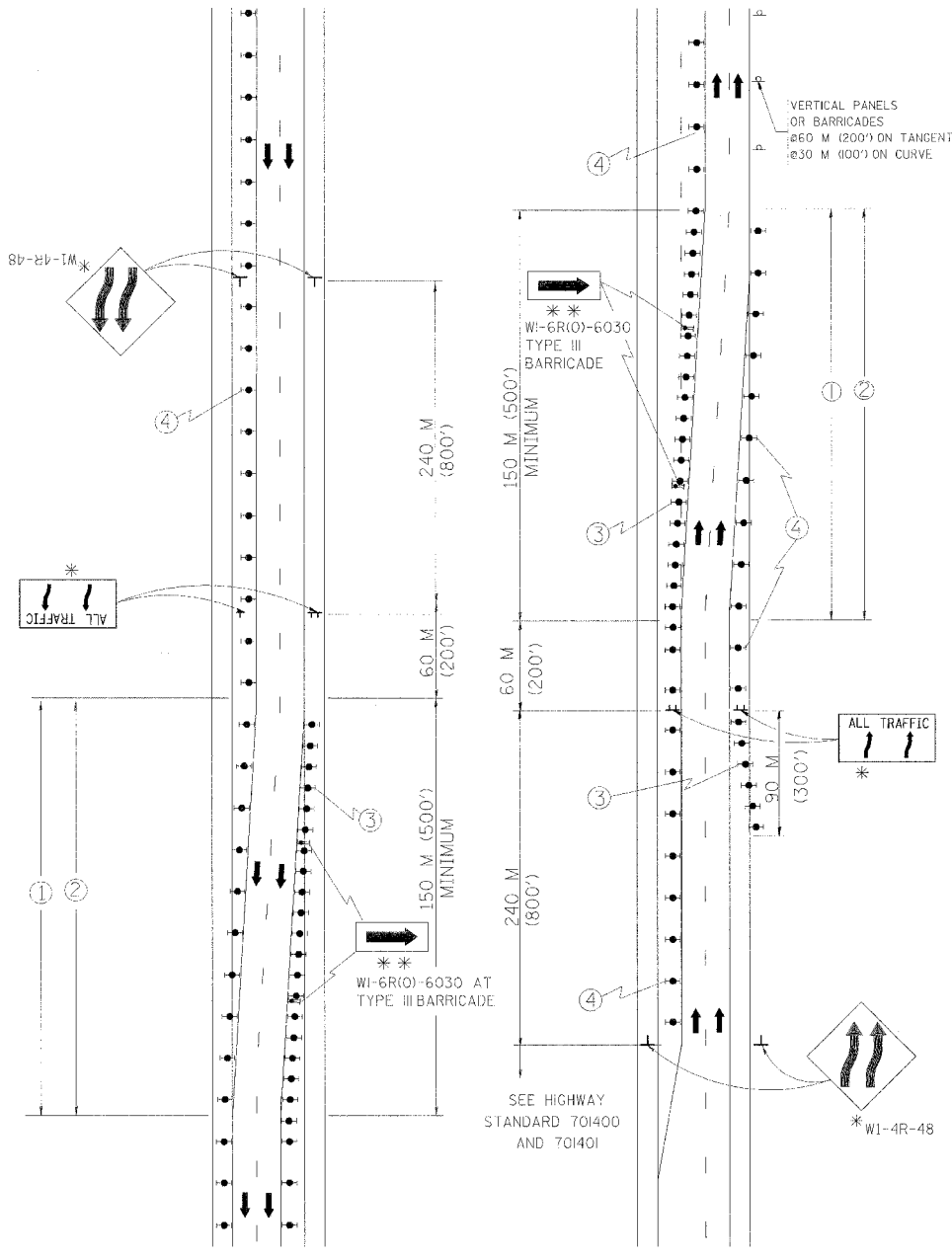


1. CLOSURE AS SHOWN ON STANDARD 701401 EXCEPT AS OTHERWISE SHOWN HEREIN
2. CLOSURE SHALL BE USED ONLY FOR OPERATIONS LASTING 72 HOURS OR LESS
3. A CHECK BARRICADE SHALL BE PLACED IN THE MIDDLE OF THE CLOSED LANE AND AT THE SHOULDER AT 300 M (1000') CENTERS
4. TYPE II BARRICADES, DRUMS, OR VERTICAL BARRICADES AT 30 M (100') CENTERS
5. DIRECTION INDICATOR BARRICADES AT 15 M (50') CENTERS

### INSTALLATION SEQUENCE



## MULTI-LANE WEAVE

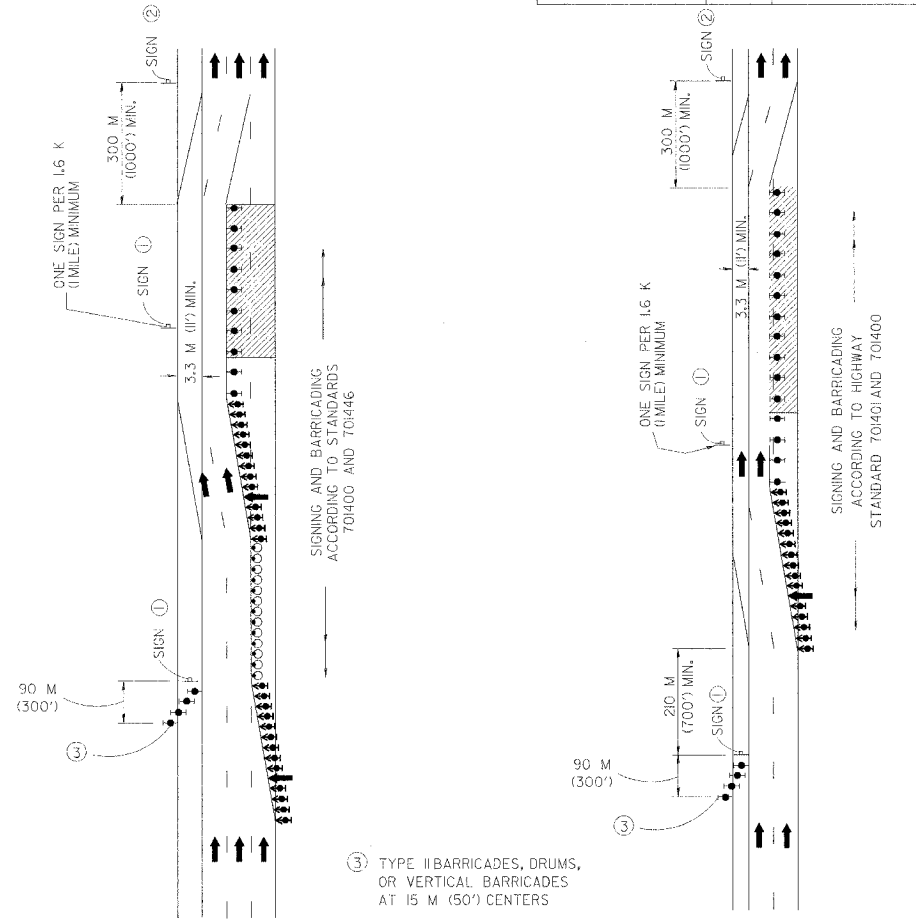


\* THE NUMBER OF ARROWS ON THESE SIGNS SHALL MATCH THE NUMBER OF LANES OPEN TO TRAFFIC

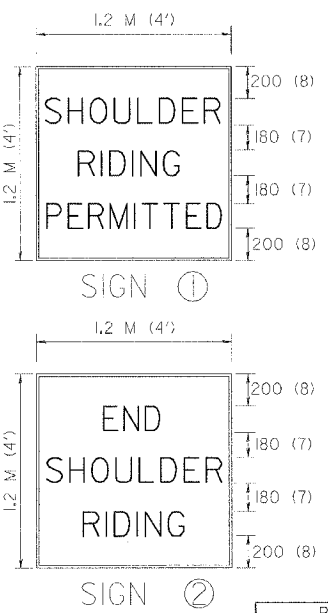
\*\* IF A TYPE II BARRICADE WITH AN ATTACHED SIGN PANEL WHICH MEET NCHRP 350 IS NOT AVAILABLE, THE SIGNS MAY BE MOUNTED ON NCHRP 350 TEMPORARY SIGN SUPPORTS DIRECTLY IN FRONT OF THE BARRICADE

- ① TEMPORARY PAVEMENT MARKING TO BE INSTALLED: CONTINUOUS YELLOW LEFT EDGE LINE, LANE LINES 3 M-9 M (10'-30') SKIP-DASH, WHITE, CONTINUOUS WHITE RIGHT EDGE LINE.
  - ② EXISTING PAVEMENT MARKING TO BE REMOVED.
  - ③ TYPE II BARRICADE, DRUM, OR VERTICAL BARRICADE WITH STEADY BURN MONODIRECTIONAL LIGHT AT 15 M (50') C-C SPACING.
  - ④ TYPE II BARRICADE, DRUM, OR VERTICAL BARRICADE WITH STEADY BURN MONODIRECTIONAL LIGHT AT 30 M (100') C-C SPACING.
- ALL TRAFFIC 1.2 m x 2.4 m (4'x8'); 25 (1) BORDER; 250 (10) CAPITAL LETTERS BACKGROUND SHEETING SHALL BE THE SAME AS ALL DIAMOND SHAPED CONSTRUCTION SIGNS.

## SHOULDER LANE



- ③ TYPE II BARRICADES, DRUMS, OR VERTICAL BARRICADES AT 15 M (50') CENTERS
- CLOSURE SHALL BE USED ONLY FOR OPERATIONS LASTING 72 HOURS OR LESS.



150 (6) SERIES 'C' LEGEND BLACK LEGEND WHITE REFLECT. BACKGROUND 25 (1) BORDER

- ### SYMBOLS
- ARROW BOARD
  - WORK AREA
  - SIGN WITH 450x450 (18x18) ORANGE FLAG ATTACHED \*
  - SIGN ON PORTABLE OR PERMANENT SUPPORT \*
  - TYPE II BARRICADE, DRUM, OR VERTICAL BARRICADE WITH STEADY BURN MONODIRECTIONAL LIGHT
  - DRUM WITH STEADY BURN MONODIRECTIONAL LIGHT
  - DIRECTION INDICATOR BARRICADE WITH STEADY BURN MONODIRECTIONAL LIGHT
- \* ALL SIGNS SHALL BE MOUNTED AT A MINIMUM HEIGHT OF 1.5 m (5').

### GENERAL NOTE

WORK ZONE SPEED LIMIT SIGNS AND FLAGGER SIGNS SHALL BE AS SHOWN ON STANDARD 701401

ALL DIMENSIONS ARE IN MILLIMETERS (INCHES) UNLESS OTHERWISE SHOWN

REVISIONS	
NAME	DATE
HS 04-2004	4/27/04
MULTI-LANE WEAVE TAPER LENGTH	10/21/04
DEL PS 701401-74 ADD HS 701406	10/22/04

ILLINOIS DEPARTMENT OF TRANSPORTATION  
I-74 PROJECT STANDARD 701403-I74  
TRAFFIC CONTROL DETAILS FOR FREEWAY  
CENTER LANE CLOSURE  
MULTI-LANE WEAVE  
SHOULDER LANE

DATE 7/18/02

DRAWN BY  
CHECKED BY