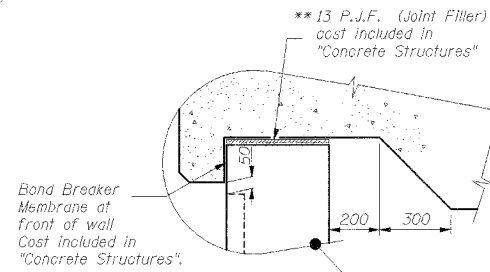
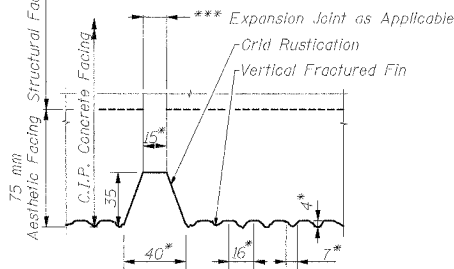


STATE OF ILLINOIS  
DEPARTMENT OF TRANSPORTATION

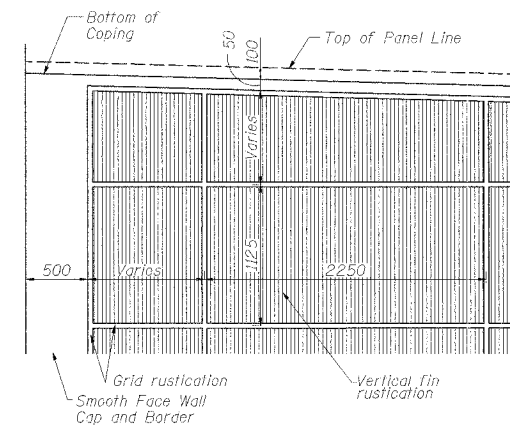
ROUTE NO.	SECTION	COUNTY	TOTAL SHEETS	SHEET NO.	SHEET NO. 3 OF 10 SHEETS
F.A.I. 74	(72-7)R-3	PEORIA	1360	1041	
FED. ROAD DIST. NO. 7	ILLINOIS	FED. AID PROJECT-			

\* Dimensions subject to minor variations within the group of approved forminers.

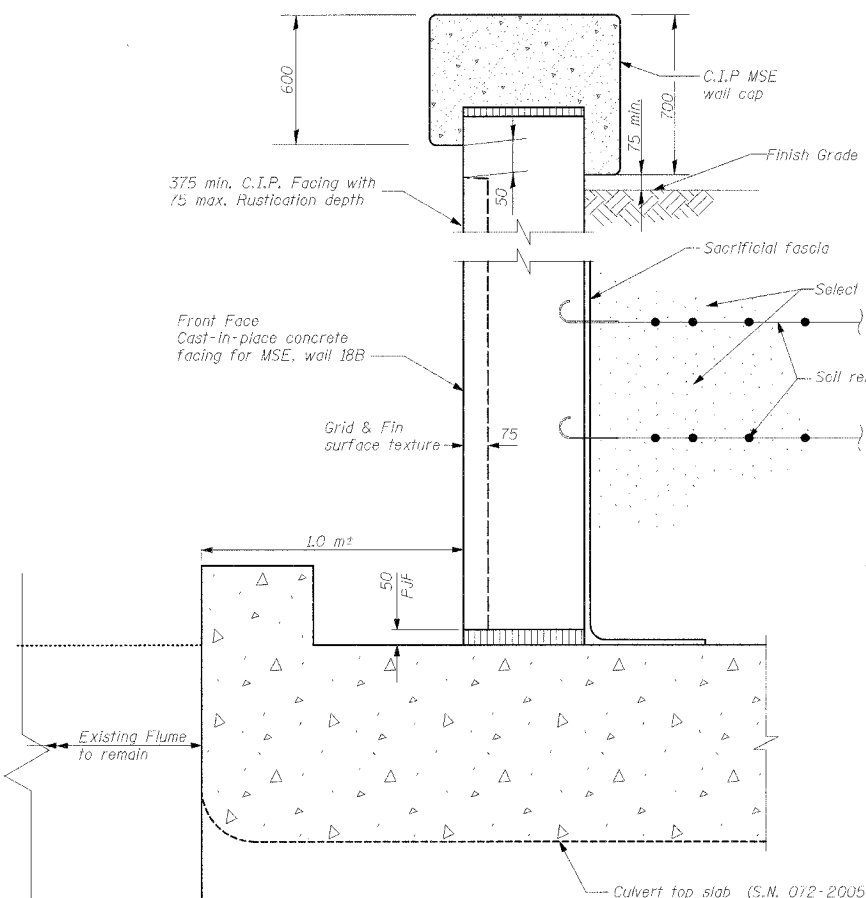
\*\*\* All expansion joints/construction joints to fall within 40mm grid rustications.



**GRID AND FIN RUSTICATION DETAIL**

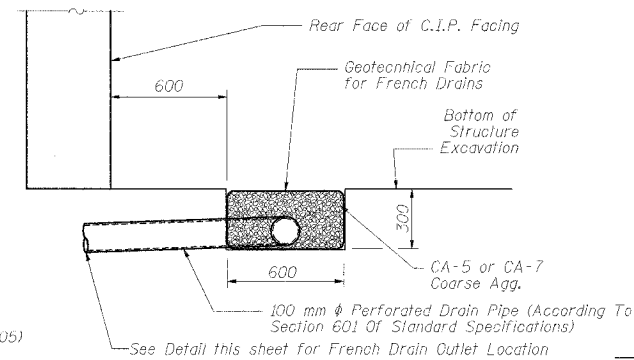


**ELEVATION RUSTICATION DETAIL**



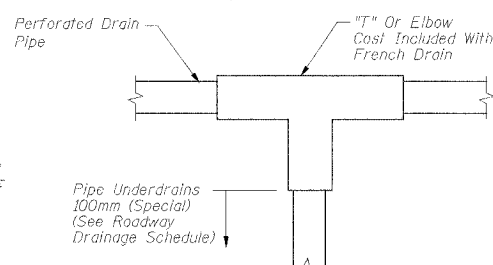
**SECTION D-D**

**WALL DETAILS OVER NEW CULVERT TOP SLAB**

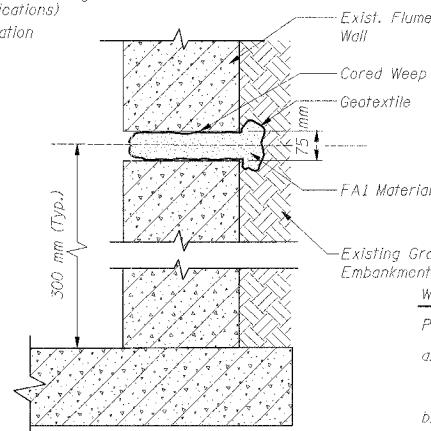


**FRENCH DRAIN DETAIL**

The French Drain Installation shall follow Section 601 of the Standard Specifications except that the trench will be filled with CA-5 or CA-7 coarse aggregate. The trench shall be lined with Geotechnical Fabric for French Drains and have a 100 mm diameter drain pipe located near the base of the excavation. The cost of the Geotechnical Fabric and Drain Pipe is included with the pay item French Drains.

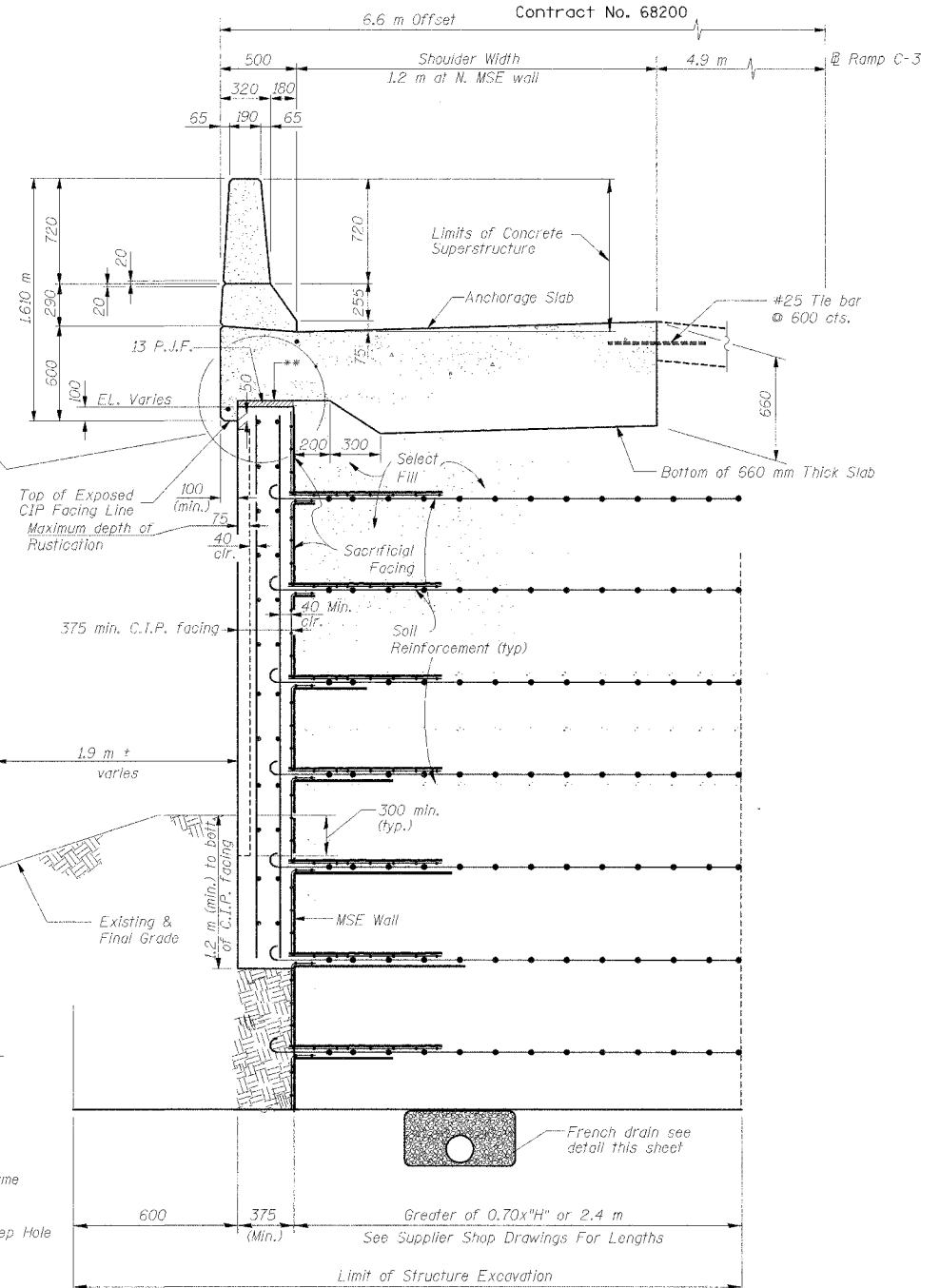


**FRENCH DRAIN OUTLET**



**WEEP HOLE DETAIL**

(45 Each)



**SECTION A-A THRU PARAPET ABOVE C.I.P. MSE WALL FACING NORTH MSE WALL**

**(Looking North)**

**WEEP HOLE NOTES:**

Proposed weep hole installation procedure:

- Core the hole (75 mm Ø) thru the existing wall at the location shown (every 3.0 m). Locate and clear existing reinforcement.
- Drill out approximately 0.6-0.7 liter of soil behind the wall
- Roll 1.7-1.8 liter of FA1 material in geotextile, wrap it all around, make the roll approximately 70 mm in diameter and tie the roll securely with elastic.
- Push the roll into the cored hole all the way.

**NORTH MSE WALL DETAILS  
RAMP C-3 OVER DRY RUN CREEK  
F.A.I. RTE 74(I-74) SECTION (72-7)R-3  
PEORIA COUNTY  
STA. 10+442.15 TO STA. 10+575 (RAMP C-3)  
STRUCTURE NUMBER 072-8618 - WALL 18B**



111 NE Jefferson Ave.  
Peoria, Illinois 61602  
Ph(309)676-8464  
FAX(309)676-5445

DESIGNED	GEK
CHECKED	
DRAWN	GEK
CHECKED	

**FRENCH DRAIN LOCATION**

