

STATE OF ILLINOIS
DEPARTMENT OF TRANSPORTATION

ROUTE NO.	SECTION	COUNTY	SHEET NO.	SHEET	SHEET NO. 2 of 15 SHEETS
F.A.I. 74	*	PEORIA	1360	1024	
FED. ROAD DIST. NO. 7		ILLINOIS	FED. AID PROJECT-		

* (72-7)R-3 Contract 68200

GENERAL NOTES

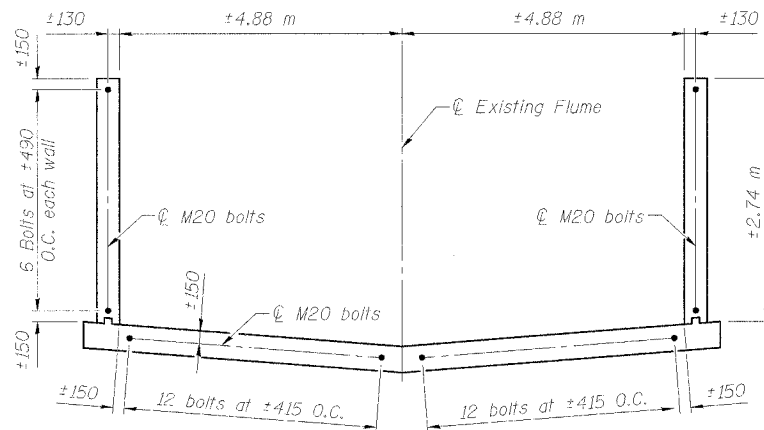
Plan dimensions and details relative to existing structure have been taken from existing plans and are subject to nominal construction variations. It shall be the Contractor's responsibility to verify such dimensions and details in the field and make necessary approved adjustments prior to construction or ordering materials. Such variations shall not be cause for additional compensation for a change in the scope of work, however, the Contractor will be paid for the quantity actually furnished at the unit price bid for the work.

Reinforcement bars shall conform to the requirements of AASHTO M 31M or M 322M Grade 400.

All dimensions are in millimeters (mm) unless noted otherwise.

All construction joints shall be bonded.

Coordinate construction of MSF walls built adjacent to culvert extensions.

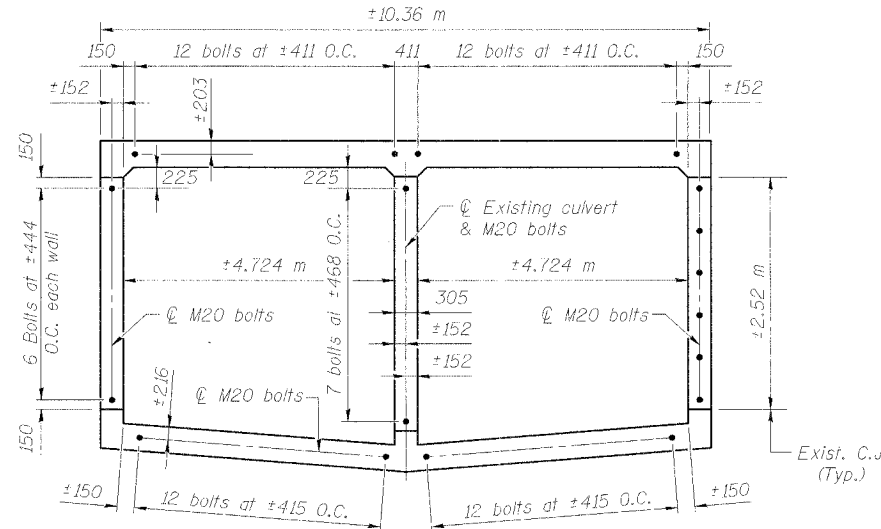


**CROSS SECTION AT EXISTING FLUME
UPSTREAM END OF NORTH CULVERT EXTENSION**

M20 Expansion bolt Layout, Looking North

Notes:

1. See Detail on sheet 8 of 15
2. Number of bolts = 36 this location



**CROSS SECTION AT EXISTING CULVERT
DOWNSTREAM END OF NORTH CULVERT EXTENSION**

M20 Expansion bolt Layout, Looking South

Notes:

1. See Detail on sheet 8 of 15
2. Number of bolts = 67 this location

TOTAL BILL OF MATERIAL

North and South Culvert Extensions

Item	Unit	Quantity
Concrete Removal	m ³	698.6
Concrete Box Culverts	m ³	1,541.7
Reinforcement Bars	kg	151,950
Name Plates	each	1
Expansion Bolts M20	each	208
Reinforcement Bars, Epoxy Coated	kg	790

DESIGN SPECIFICATIONS

2002 AASHTO

LOADING MS18 & ALT.

Allow 2.4 kN/m² for future wearing surface

DESIGN STRESSES

FIELD UNITS

NEW CONSTRUCTION

f'c = 24 MPa
fy = 400 MPa (Reinf.)

EXISTING BOX CULVERT

f'c = 24 MPa
fy = 300 MPa (Reinf.)

Max Soil Pressure under bottom slab
South Extension: 110 kPa
North Extension: 149 kPa

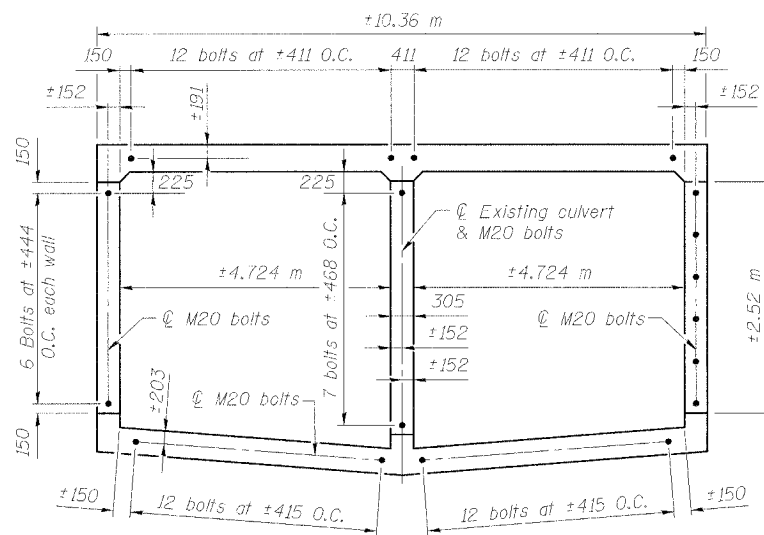
SEISMIC DATA

Seismic Performance Category (SPC) = A
Bedrock Acceleration Coefficient (A) = 0.043 g
Site Coefficient (S) = 1.5

STATION 10+364.98
BUILT 200 BY
STATE OF ILLINOIS
F.A.I. ROUTE 74 SECTION (72-7)R-3
LOADING MS18 & ALT.
STR. NO. 072-2005

NAME PLATES

See Std. 515001

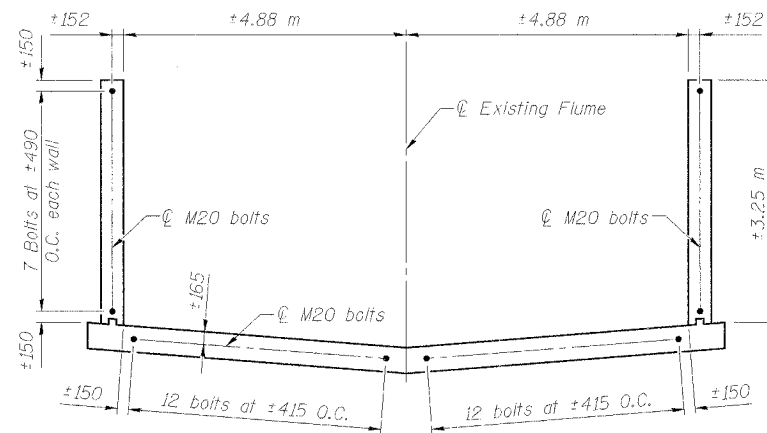


**CROSS SECTION AT EXISTING CULVERT
UPSTREAM END OF SOUTH CULVERT EXTENSION**

M20 Expansion bolt Layout, Looking North

Notes:

1. See Detail on sheet 9 of 15
2. Number of bolts = 67 this location



**CROSS SECTION AT EXISTING FLUME
DOWNSTREAM END OF SOUTH CULVERT EXTENSION**

M20 Expansion bolt Layout, Looking South

Notes:

1. See Detail on sheet 9 of 15
2. Number of bolts = 38 this location

TYPICAL SECTIONS & GENERAL NOTES
NORTH & SOUTH CULVERT EXTENSION
RAMP C-3 OVER DRY RUN CREEK
F.A.I. ROUTE 74(I-74) SECTION (72-7)R-3
PEORIA COUNTY
STATION 10+277.51 TO
STA. 10+441.66 (RAMP C-3)
STRUCTURE NUMBER 072-2005

DESIGNED	LLV
CHECKED	P.JL
DRAWN	MGM
CHECKED	LLV



111 NE Jefferson Ave.
Peoria, Illinois 61602
Ph(309)676-8464
FAX(309)676-5445

13/0702 24/02/2005 5:00 PM 02/17/05 05:14:20 AM