

TOWNSHIP 9 NORTH, RANGE 8 EAST, 4th P.M.

TOWNSHIP 8 NORTH, RANGE 8 EAST, 4th P.M.

PROPOSED CURVE DATA  
GALE AVENUE  
P.I. = 100+115.205  
Δ = 229°30'7"  
R = 863.628 m [2833.42']  
T = 170.887 m [560.65']  
L = 337.415 m [1107.00']  
E = 16.744 m [54.93']  
P.C. = 99+944.318  
P.T. = 100+281.733

PROPOSED CURVE DATA  
RTE. 74 (E.B.)  
P.I. = 145+229.974  
Δ = 179°06'08"  
R = 1255.073 m [4117.69']  
T = 188.716 m [619.15']  
L = 374.626 m [1229.09']  
E = 14.109 m [46.29']  
P.C. = 145+041.258  
P.T. = 145+415.884

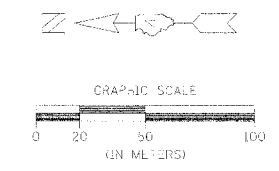
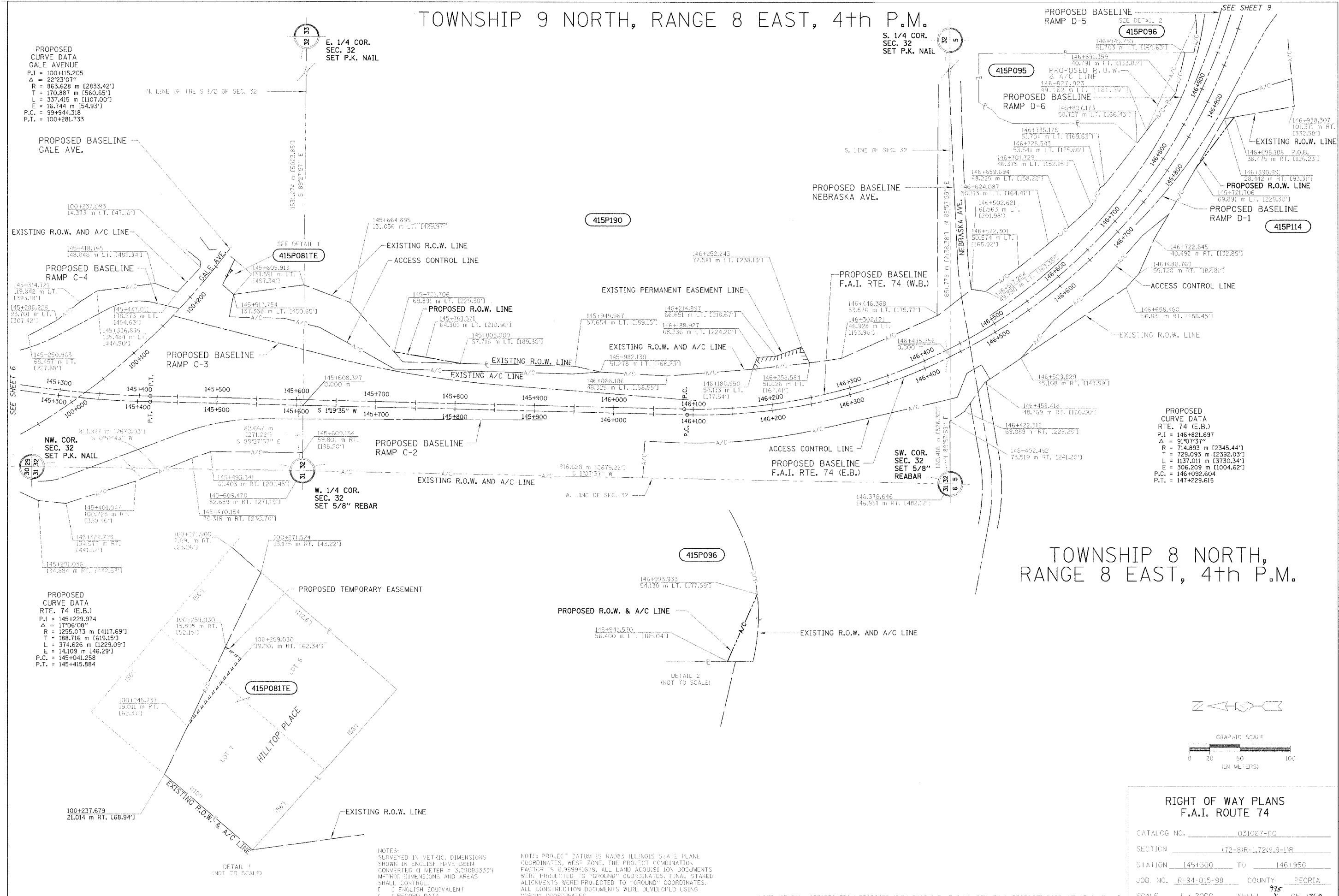
S. 1/4 COR.  
SEC. 32  
SET P.K. NAIL

E. 1/4 COR.  
SEC. 32  
SET P.K. NAIL

SW. COR.  
SEC. 32  
SET 5/8" REBAR

W. 1/4 COR.  
SEC. 32  
SET 5/8" REBAR

APPROVED BY \_\_\_\_\_  
DATE \_\_\_\_\_  
DISTRICT ENGINEER



RIGHT OF WAY PLANS F.A.I. ROUTE 74	
CATALOG NO.	031087-00
SECTION	(72-8)R-1, 729.9-11R
STATION	145+300 TO 146+500
JOB NO.	R-94-015-98 COUNTY PEORIA
SCALE	1 : 2000 SHEET 75 OF 1360

NOTES:  
SURVEYED IN METRIC, DIMENSIONS SHOWN IN ENGLISH HAVE BEEN CONVERTED (1 METER = 3.28083333 FEET). DIMENSIONS AND AREAS SHALL CONTROL. ( ) ENGLISH EQUIVALENT ( ) RECORD DATA

NOTE: PROJECT DATUM IS NAD83 ILLINOIS STATE PLANE COORDINATES, WEST ZONE. THE PROJECT COMBINATION FACTOR IS 0.999941678. ALL LAND ACQUISITION DOCUMENTS WERE PROJECTED TO "GROUND" COORDINATES. FINAL STAKED ALIGNMENTS WERE PROJECTED TO "GROUND" COORDINATES. ALL CONSTRUCTION DOCUMENTS WILL BE LAYED OUT USING "GROUND" COORDINATES.

NOTE: STATION OFFSETS FROM PROPOSED (E.B.) BASELINE OF F.A.I. RTE. 74 & PROPOSED BASELINE OF GALE AVE.