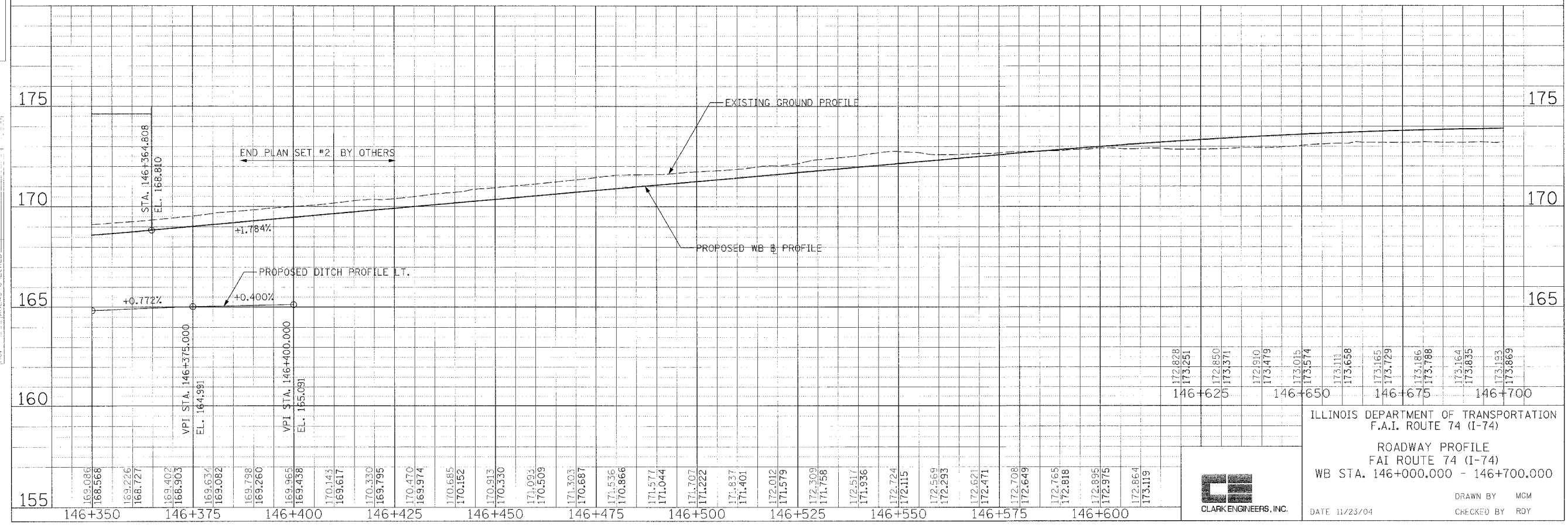
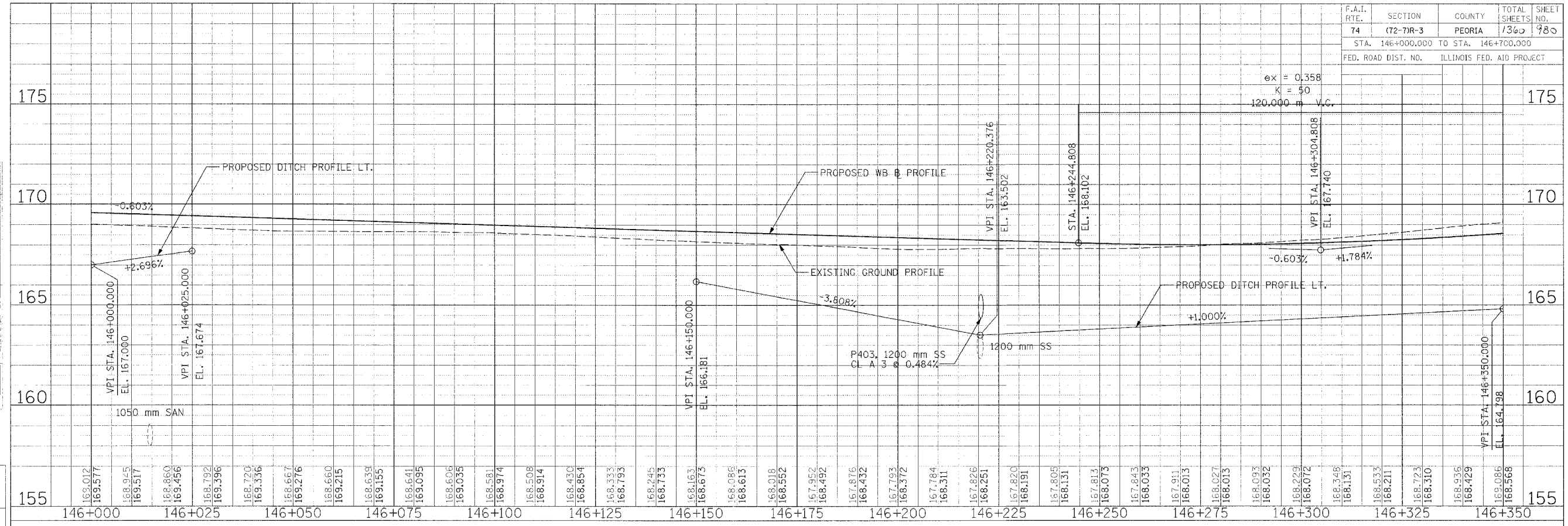


F.A.I. RTE.	SECTION	COUNTY	TOTAL SHEETS	SHEET NO.
74	(72-7)R-3	PEORIA	1360	780
STA. 146+000.000 TO STA. 146+700.000				
FED. ROAD DIST. NO. ILLINOIS FED. AID PROJECT				

FINAL SURVEY	SERVED	BY	DATE
NOTE BOOK	PLOTTED		
NO.	AREAS CHECKED		

REVISIONS	NAME	DATE

ORIGINAL SURVEY	SERVED	BY	DATE
NOTE BOOK	PLOTTED		
NO.	AREAS CHECKED		



ILLINOIS DEPARTMENT OF TRANSPORTATION  
F.A.I. ROUTE 74 (I-74)

ROADWAY PROFILE  
FAI ROUTE 74 (I-74)  
WB STA. 146+000.000 - 146+700.000

DATE 11/23/04  
DRAWN BY MCM  
CHECKED BY RDY