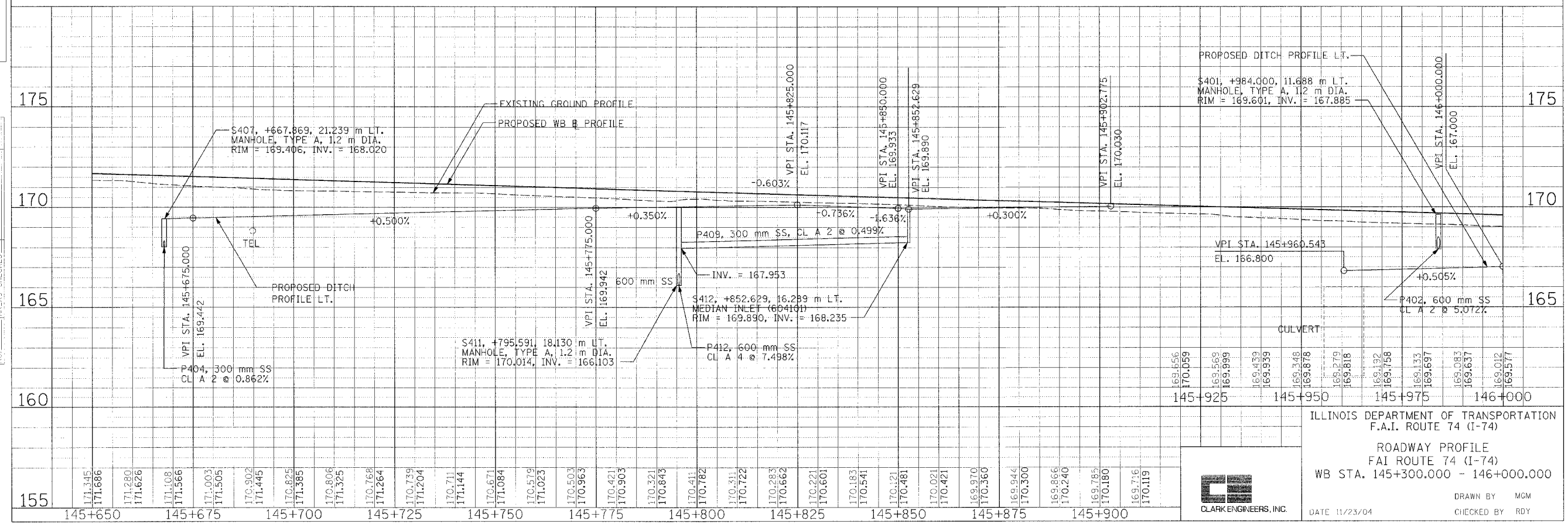
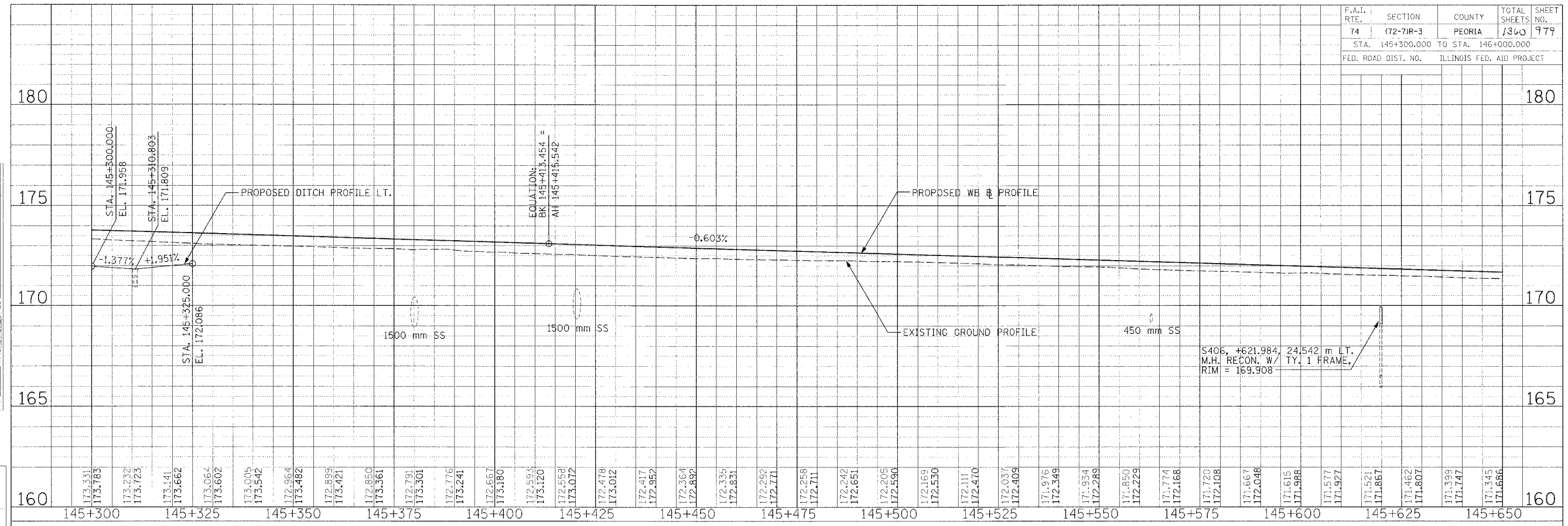


F.A.I. RTE.	SECTION	COUNTY	TOTAL SHEETS	SHEET NO.
74	(72-71R-3)	PEORIA	1360	979
STA. 145+300.000 TO STA. 146+000.000				
FED. ROAD DIST. NO. ILLINOIS FED. AID PROJECT				

FINAL SURVEY PLOTTED	BY	DATE
NOTE BOOK TEMPLATE		
APPROVED		
CHECKED		

REVISIONS	DATE
NAME	

ORIGINAL SURVEY PLOTTED	BY	DATE
NOTE BOOK TEMPLATE		
APPROVED		
CHECKED		



ILLINOIS DEPARTMENT OF TRANSPORTATION  
F.A.I. ROUTE 74 (I-74)

ROADWAY PROFILE  
FAI ROUTE 74 (I-74)  
WB STA. 145+300.000 - 146+000.000



DATE 11/23/04  
DRAWN BY MGM  
CHECKED BY RDY

C:\p01\m002\74r03\74r03.dwg 12/14/04 10:37:46 AM