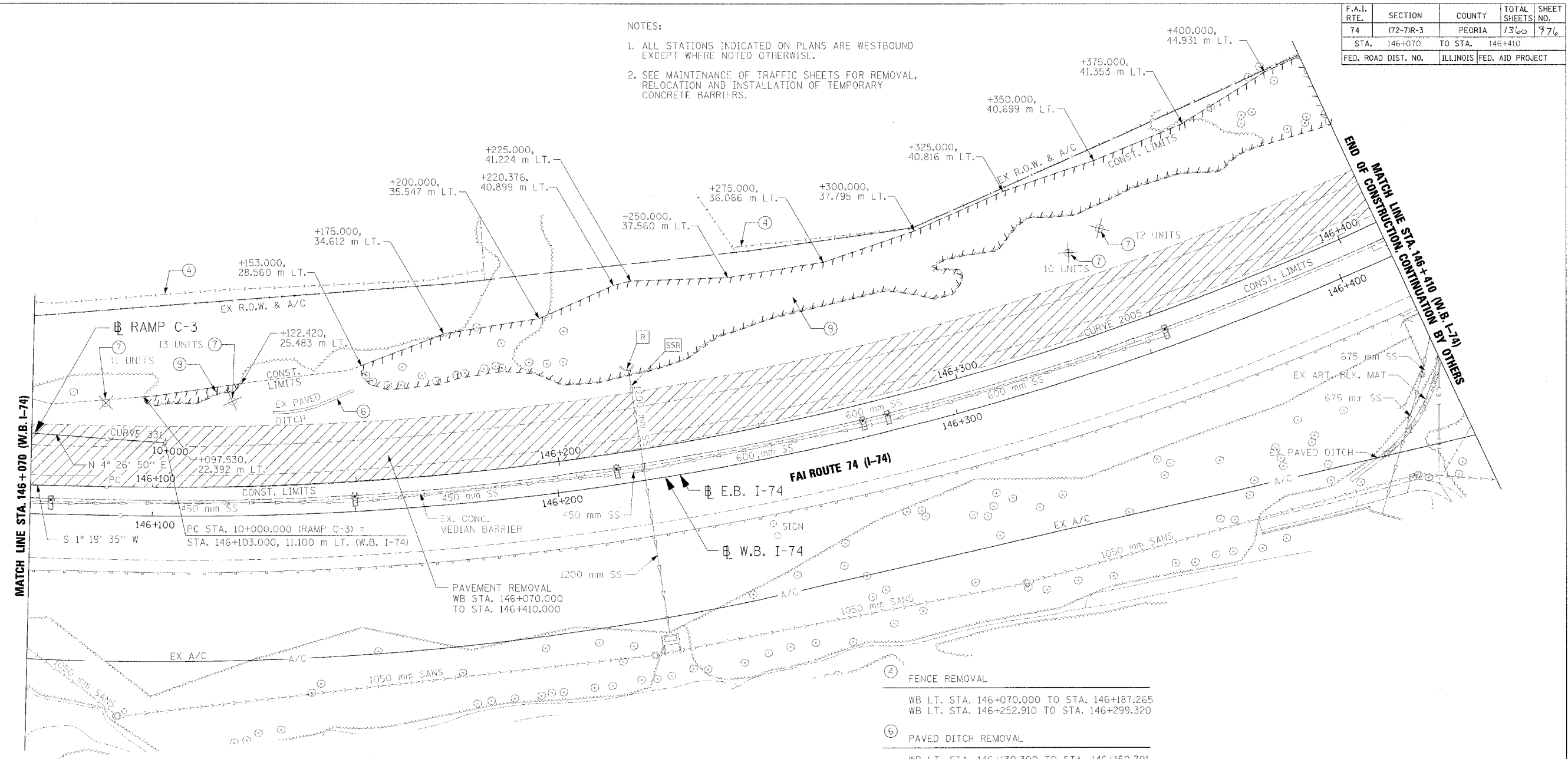


F.A.I. RTE.	SECTION	COUNTY	TOTAL SHEETS	SHEET NO.
74	(72-7)R-3	PEORIA	1360	976
STA.	146+070	TO STA.	146+410	
FED. ROAD DIST. NO.	ILLINOIS	FED. AID PROJECT		

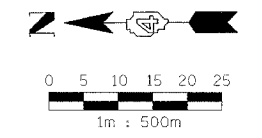
NOTES:
 1. ALL STATIONS INDICATED ON PLANS ARE WESTBOUND EXCEPT WHERE NOTED OTHERWISE.
 2. SEE MAINTENANCE OF TRAFFIC SHEETS FOR REMOVAL, RELOCATION AND INSTALLATION OF TEMPORARY CONCRETE BARRIERS.



REMOVAL LEGEND AND KEY

	PAVEMENT REMOVAL	①	X LIGHTING FIXTURE & FOUNDATION REMOVAL	[A]	FRAME AND GRATE TO BE ADJUSTED
	SHOULDER REMOVAL	②	COMBINATION CONCRETE CURB AND GUTTER REMOVAL	[A]	FRAME AND LID TO BE ADJUSTED
	DRIVEWAY PAVEMENT REMOVAL	③	BITUMINOUS SURFACE REMOVAL 300mm WIDTH x 40mm DEPTH	[ADJ]	STRUCTURE TO BE ADJUSTED
	SIDEWALK REMOVAL	④	FENCE REMOVAL	[AB]	ITEM TO BE ABANDONED
	CURB & GUTTER REMOVAL	⑤	GUARDRAIL REMOVAL	[M]	ITEM TO BE MOVED
	GUARDRAIL REMOVAL	⑥	PAVED DITCH REMOVAL	[C]	STRUCTURE TO BE CLEANED
	BITUMINOUS SURFACE REMOVAL	⑦	TREE REMOVAL (6-15 UNITS DIA.)	[F]	STRUCTURE TO BE FILLED
	BITUMINOUS TAPER (FOR BUTT JOINTS)	⑧	TREE REMOVAL (OVER 15 UNITS DIA.)	[R]	STRUCTURE TO BE REMOVED
		⑨	TREE REMOVAL (HECTARES)	[REC]	STRUCTURE TO BE RECONSTRUCTED
				[SSR]	STORM SEWER REMOVAL
				[SP]	SPECIAL ADJUSTMENT

- ④ FENCE REMOVAL
WB LT. STA. 146+070.000 TO STA. 146+187.265
WB LT. STA. 146+252.910 TO STA. 146+299.320
- ⑥ PAVED DITCH REMOVAL
WB LT. STA. 146+130.300 TO STA. 146+150.791
- ⑦ TREE REMOVAL (6-15 UNITS DIA.)
WB STA. 146+088.045, 20.785 m LT.
WB STA. 146+120.025, 21.160 m LT.
WB STA. 146+335.910, 21.315 m LT.
WB STA. 146+345.365, 24.490 m LT.
- ⑨ TREE REMOVAL (HECTARES)
WB LT. STA. 146+097.530 TO STA. 146+122.420
WB LT. STA. 146+153.000 TO STA. 146+410.000
- [SSR] STORM SEWER REMOVAL 1200 mm
WB STA. 146+220.574, 19.825 m LT. TO STA. 146+220.477, 10.295 m LT.
- [R] CONCRETE HEADWALL REMOVAL
WB STA. 146+220.574, 19.825 m LT.



REVISIONS	
NAME	DATE

ILLINOIS DEPARTMENT OF TRANSPORTATION
 EXISTING ROADWAY PLAN
 FAI ROUTE 74 (I-74)
 WB STA. 146+070 - STA. 146+410
 DATE 11/23/04
 DRAWN BY CAM
 CHECKED BY LSA

