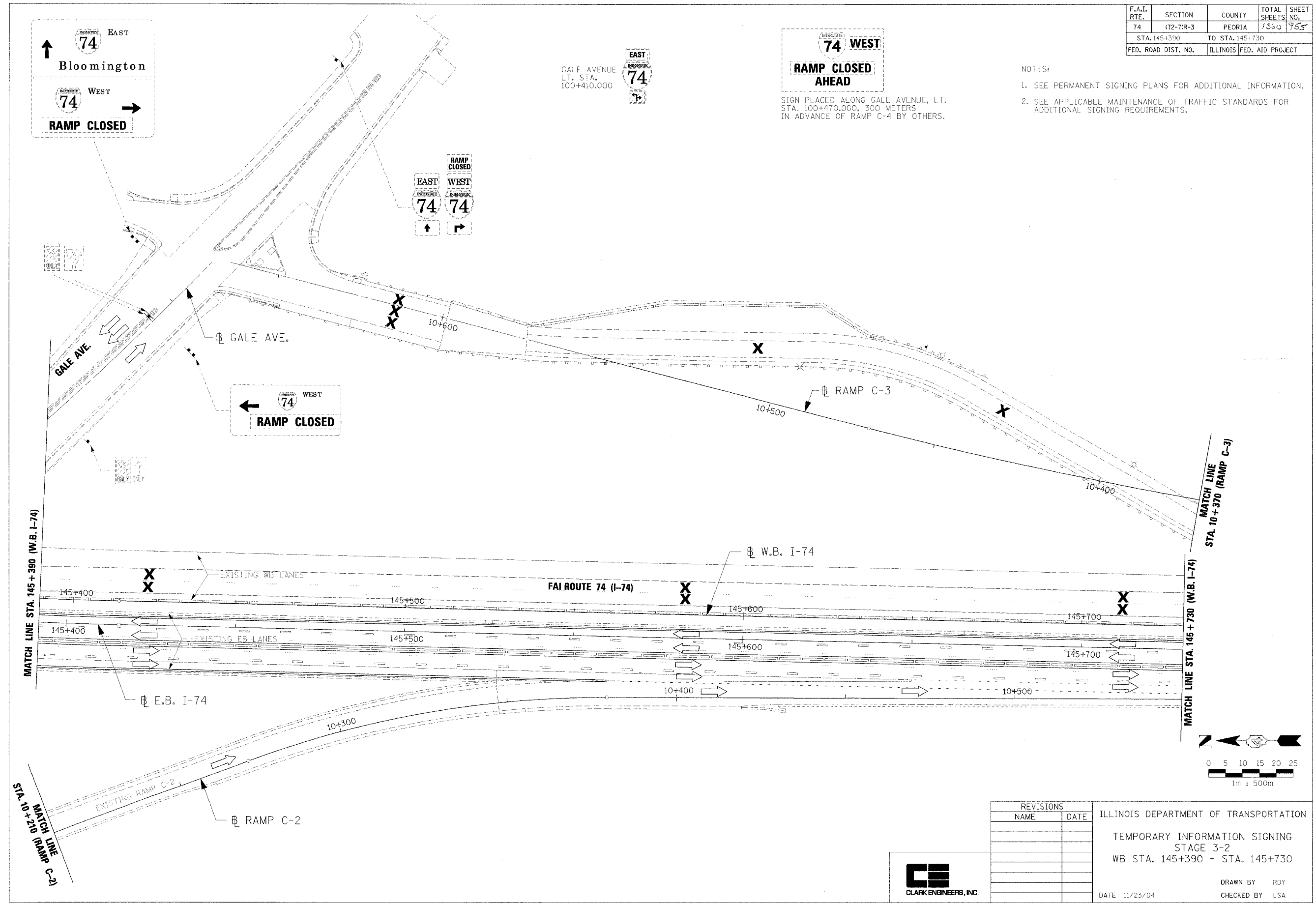


F.A.I. RTE.	SECTION	COUNTY	TOTAL SHEETS	SHEET NO.
74	(72-71R-3)	PEORIA	1360	755
STA. 145+390		TO STA. 145+730		
FED. ROAD DIST. NO.	ILLINOIS	FED. AID PROJECT		

- NOTES:
- SEE PERMANENT SIGNING PLANS FOR ADDITIONAL INFORMATION.
 - SEE APPLICABLE MAINTENANCE OF TRAFFIC STANDARDS FOR ADDITIONAL SIGNING REQUIREMENTS.



REVISIONS	
NAME	DATE

ILLINOIS DEPARTMENT OF TRANSPORTATION
 TEMPORARY INFORMATION SIGNING
 STAGE 3-2
 WB STA. 145+390 - STA. 145+730

DATE 11/23/04

DRAWN BY RDY
 CHECKED BY LSA

12/14/04 06:38:35 PM