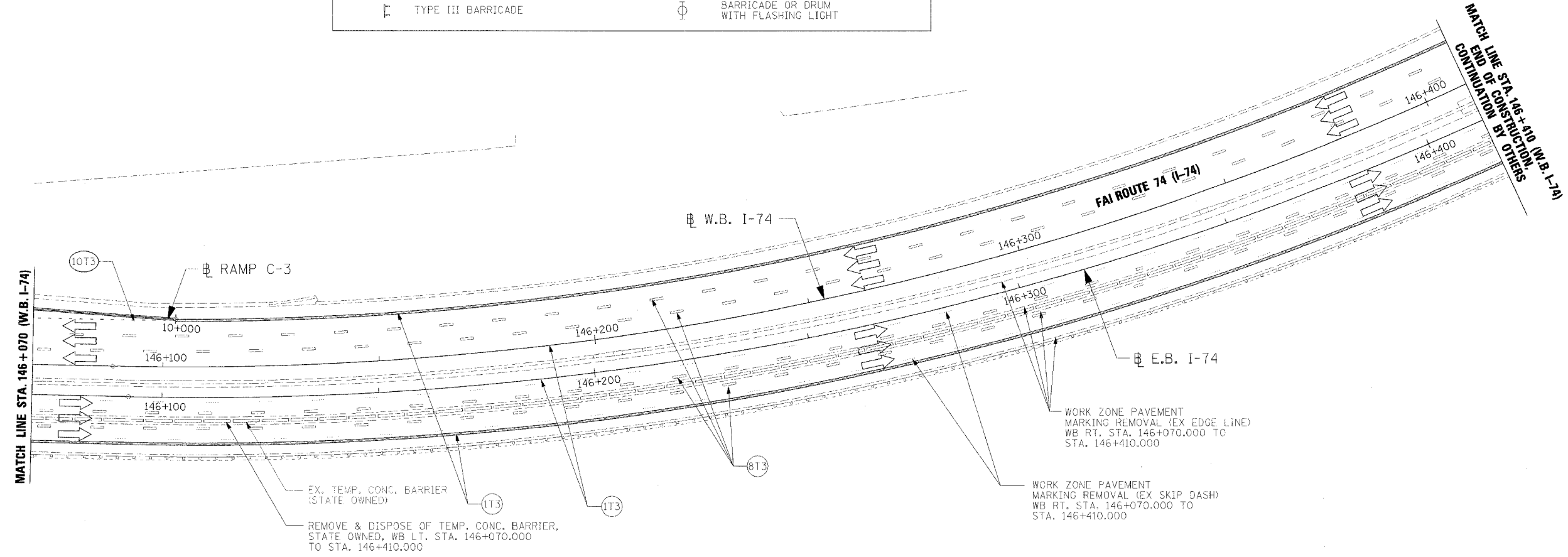


F.A.I. RTE.	SECTION	COUNTY	TOTAL SHEETS	SHEET NO.
74	(72-71R-3)	PEORIA	1360	197
STA. 146+070		TO STA. 146+410		
FED. ROAD DIST. NO.		ILLINOIS FED. AID PROJECT		

TRAFFIC CONTROL		
HIGHWAY STANDARD	701400	
HIGHWAY STANDARD	701401	
HIGHWAY STANDARD	701406	
HIGHWAY STANDARD	701411	
HIGHWAY STANDARD	701426	
HIGHWAY STANDARD	701446	
HIGHWAY STANDARD	702001	
PROJECT STANDARD	701403-174	

NOTES:
 1. ALL REQUIRED PAVEMENT MARKINGS MUST BE IN PLACE PRIOR TO SHIFTING TRAFFIC.

MAINTENANCE OF TRAFFIC LEGEND			
	WORK ZONE		EX TEMPORARY CONCRETE BARRIER
	TRAFFIC FLOW DIRECTION		PR TEMPORARY CONCRETE BARRIER
	LANE(S) CLOSED		VERTICAL PANEL
	ARROW BOARD		BARRICADE TYPE I OR TYPE II OR DRUM
	DRUM WITH STEADY BURNING MONODIRECTIONAL LIGHT		SIGN
	TYPE III BARRICADE WITH FLASHING LIGHT		CONSTRUCTION SPEED LIMIT SIGN
	TYPE III BARRICADE		FLAGGER WITH TRAFFIC CONTROL SIGN
			BARRICADE OR DRUM WITH STEADY BURNING MONODIRECTIONAL LIGHT
			BARRICADE OR DRUM WITH FLASHING LIGHT



- (1T3) 100 mm SOLID, PAVEMENT MARKING TAPE, TYPE III (WHITE)
WB LT. STA. 146+070.000 TO STA. 146+410.000
WB RT. STA. 146+070.000 TO STA. 146+410.000
- (1T3) 100 mm SOLID, PAVEMENT MARKING TAPE, TYPE III (YELLOW)
WB STA. 146+070.000 TO STA. 146+410.000
WB RT. STA. 146+070.000 TO STA. 146+410.000
- (8T3) 150 mm SKIP DASH, PAVEMENT MARKING TAPE, TYPE III (WHITE)
WB LT. STA. 146+070.000 TO STA. 146+410.000
WB LT. STA. 146+070.000 TO STA. 146+410.000
WB RT. STA. 146+070.000 TO STA. 146+410.000
WB RT. STA. 146+070.000 TO STA. 146+410.000
- (10T3) 200 mm DOTTED, PAVEMENT MARKING TAPE, TYPE III (WHITE)
WB LT. STA. 146+070.000 TO STA. 146+102.986

PAVEMENT MARKING LEGEND	
(1X)	100 (4) SOLID
(2X)	150 (6) SOLID
(3X)	200 (8) SOLID
(4X)	300 (12) SOLID
(5X)	600 (24) SOLID
(6X)	100 (4) DOUBLE SOLID
(7X)	100 (4) SKIP DASH
(8X)	150 (6) SKIP DASH
(9X)	200 (8) SKIP DASH
(10X)	200 (8) DOTTED
(11X)	LETTERS AND ARROWS

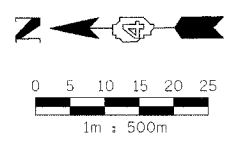
RAISED REFLECTIVE PAVEMENT MARKERS	
1	ONE-WAY CRYSTAL MARKER AT 24.38 m(80') CENTERS
2	ONE-WAY CRYSTAL MARKER AT 12.19 m(40') CENTERS
3	ONE-WAY CRYSTAL MARKER AT 6.10 m(20') CENTERS
4	ONE-WAY AMBER MARKER AT 12.19 m(40') CENTERS
5	TWO-WAY AMBER MARKER AT 12.19 m(40') CENTERS FOR SPEEDS LESS THAN 45 MPH
6	TWO-WAY AMBER MARKER AT 24.38 m(80') CENTERS FOR SPEEDS GREATER THAN 45 MPH

WHERE "X" DESIGNATES:
 E = EPOXY
 P = PAINT
 T = THERMOPLASTIC
 U = POLYUREA
 TP= TEMPORARY PAVEMENT MARKING
 T3= PAVEMENT MARKING TAPE, TYPE III
 W3= WET TEMPORARY PAVEMENT MARKING TAPE, TYPE III
 All dimensions are in millimeters (Inches) unless otherwise shown.



REVISIONS	
NAME	DATE

ILLINOIS DEPARTMENT OF TRANSPORTATION
 MAINTENANCE OF TRAFFIC
 STAGE 3-4
 WB STA. 146+070 - STA. 146+410
 DRAWN BY RDY
 CHECKED BY LSA
 DATE 11/23/04



11/23/04 10:25:23 AM