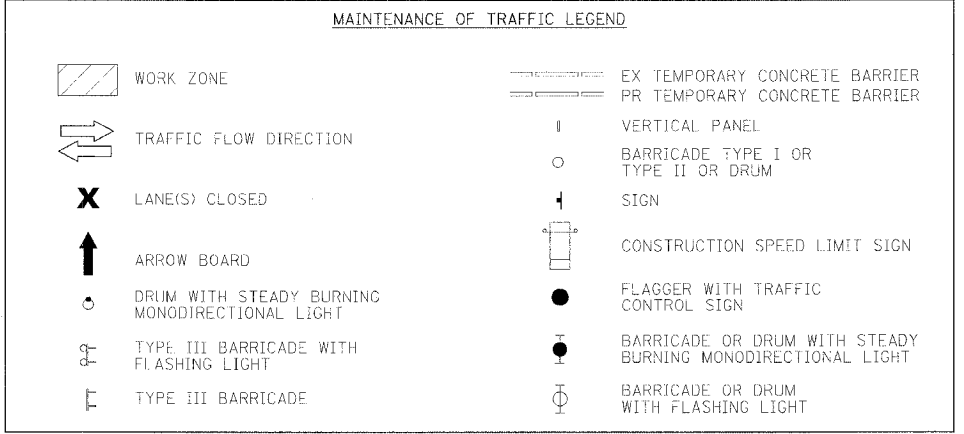
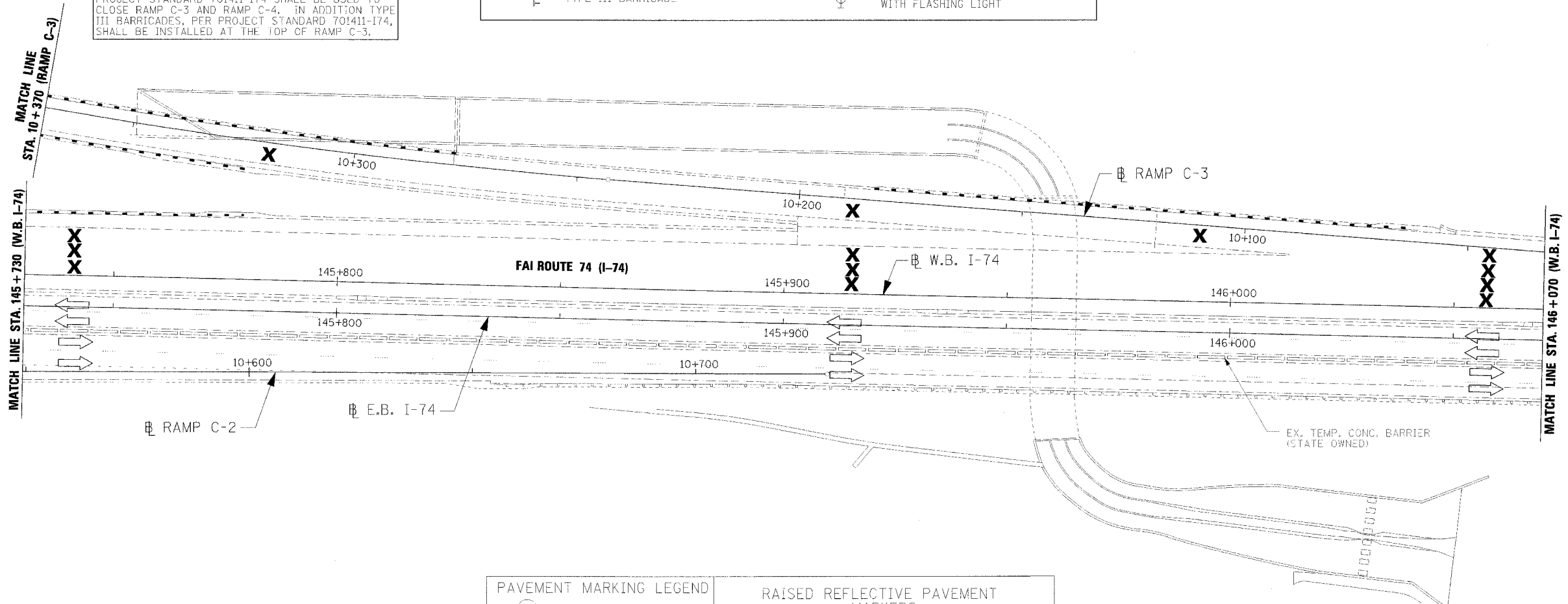


F.A.I. RTE.	SECTION	COUNTY	TOTAL SHEETS	SHEET NO.
74	(72-70R-3)	PEORIA	1360	991
STA. 145+730		TO STA. 146+070		
FED. ROAD DIST. NO.	ILLINOIS	FED. AID PROJECT		



NOTES:
1. ALL REQUIRED PAVEMENT MARKINGS MUST BE IN PLACE PRIOR TO SHIFTING TRAFFIC.

PROJECT STANDARD 701411-I74 SHALL BE USED TO CLOSE RAMP C-3 AND RAMP C-4. IN ADDITION TYPE III BARRICADES, PER PROJECT STANDARD 701411-I74, SHALL BE INSTALLED AT THE TOP OF RAMP C-3.



PAVEMENT MARKING LEGEND

(1X)	100 (4) SOLID
(2X)	150 (6) SOLID
(3X)	200 (8) SOLID
(4X)	300 (12) SOLID
(5X)	600 (24) SOLID
(6X)	100 (4) DOUBLE SOLID
(7X)	100 (4) SKIP DASH
(8X)	150 (6) SKIP DASH
(9X)	200 (8) SKIP DASH
(10X)	200 (8) DOTTED
(11X)	LETTERS AND ARROWS

RAISED REFLECTIVE PAVEMENT MARKERS

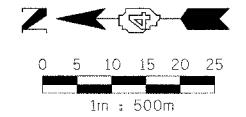
1	ONE-WAY CRYSTAL MARKER AT 24.38 m(80') CENTERS
2	ONE-WAY CRYSTAL MARKER AT 12.19 m(40') CENTERS
3	ONE-WAY CRYSTAL MARKER AT 6.10 m(20') CENTERS
4	ONE-WAY AMBER MARKER AT 12.19 m(40') CENTERS
5	TWO-WAY AMBER MARKER AT 12.19 m(40') CENTERS FOR SPEEDS LESS THAN 45 MPH
6	TWO-WAY AMBER MARKER AT 24.38 m(80') CENTERS FOR SPEEDS GREATER THAN 45 MPH

WHERE "X" DESIGNATES:

E = EPOXY	— WHITE
P = PAINT	— YELLOW
T = THERMOPLASTIC	
U = POLYUREA	

TP= TEMPORARY PAVEMENT MARKING
T3= PAVEMENT MARKING TAPE, TYPE III
W3= WET TEMPORARY PAVEMENT MARKING TAPE, TYPE III

All dimensions are in millimeters (inches) unless otherwise shown.



REVISIONS	
NAME	DATE

ILLINOIS DEPARTMENT OF TRANSPORTATION
MAINTENANCE OF TRAFFIC
STAGE 3-3
WB STA. 145+730 - STA. 146+070

DATE 11/23/04

DRAWN BY RDY
CHECKED BY LSA